



Week 20: May 12-18, 2013



Summary

The Florida Department of Health (FDOH) uses many different surveillance systems to measure influenza activity. A summary of all these systems can be found on page 11.

NOTE: Week 20 is the end of the influenza surveillance season. FDOH will continue to distribute influenza reports in abbreviated form during the summer months. Many influenza surveillance systems will continue to operate year-round.

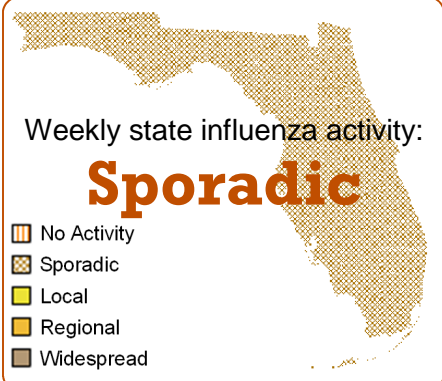
- On April 1, 2013, the World Health Organization (WHO) reported that confirmed human infection with novel avian influenza A(H7N9) virus was identified in China. The first onset of illness was on February 19, 2013. WHO reports 131 total confirmed cases as of May 16, all in or with recent travel to China. Thirty-two infected individuals have died. FDOH continues to actively monitor the situation.
 - There is no evidence that avian influenza A(H7N9) virus is capable of sustained person-to-person transmission.
 - There is no evidence of avian influenza A(H7N9) virus infection in the United States or any countries other than China. No travel advisories to China are in effect.
 - On April 5, FDOH distributed a [CDC Avian Influenza A\(H7N9\) virus Health Advisory](#) to state, county and community health partners via EpiCom, Florida's health alert notification system.
 - More information on avian influenza A(H7N9) virus and other novel and variant influenza viruses can be found at: <http://www.doh.state.fl.us/Environment/medicine/arboviral/zoonoses/Zoonotic-avian.html>
 - Avian influenza A(H7N9) virus is a kind of influenza normally found in birds. These are the first identified cases of human infection with avian influenza A(H7N9) virus.
- All Florida counties reported Mild or No influenza activity. Thirty-three counties reported declining influenza activity.
- Emergency department and urgent care center influenza-like illness (ILI) visits have decreased overall in recent weeks. In emergency departments and urgent care centers reporting to ESSENCE-FL, the statewide percent of emergency department visits for ILI is at typical levels for this time of year in all regions of Florida.
- Nationally (including Florida), the most common subtypes of influenza detected this season have been influenza A H3, followed by influenza B.
 - In week 20, one of six specimens submitted for influenza testing at BPHL tested PCR positive for 2009 influenza A H1N1. Influenza B, influenza A H3 and 2009 influenza A H1N1 have all been detected in the past season. All of these are seasonal strains of influenza.
 - Nationally (including Florida), almost all circulating influenza is a good match for the vaccine.
- No influenza or ILI outbreaks (epidemiologically linked cases of influenza in a single setting) were reported in week 20.
- No pediatric influenza-associated deaths were reported in week 20.
 - Eight pediatric influenza-associated deaths have been reported in the 2012-2013 season.
- The preliminary estimated number of Florida deaths due to pneumonia or influenza in week 19 is lower than the seasonal baseline, based on previous years' data. Estimated deaths due to pneumonia and influenza are identified using preliminary death certificate data.
 - Nationwide data from CDC show pneumonia and influenza deaths for week 18 within expected levels.
- Because of low influenza activity in most regions of the state, Florida reported Sporadic influenza activity to CDC in week 20.
 - This activity level represents the geographic spread of influenza in Florida.

May 22, 2013

Posted on the Bureau of Epidemiology website: <http://www.doh.state.fl.us/floridaflu/>

Produced by: Bureau of Epidemiology, Florida Department of Health

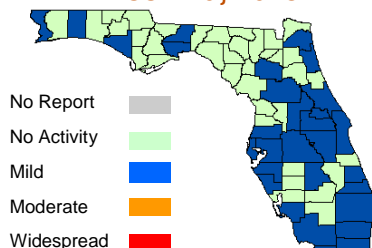
Contributors: Heather Rubino, MS; Colin Malone, MPH; Leah Eisenstein, MPH; Lea Heberlein-Larson, MPH; Valerie Mock; Janet Hamilton, MPH



In this Issue:

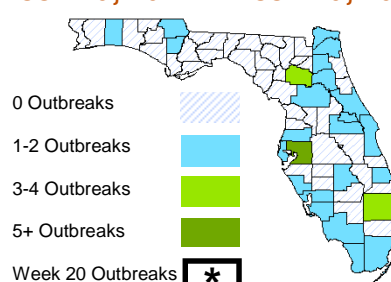
Summary	1
Outpatient Influenza-Like Illness Surveillance Network (ILINET)-Statewide	2
ESSENCE-FL Syndromic Surveillance Summary-Statewide	3
ESSENCE-FL Syndromic Surveillance Summary-Regional	4
Florida Bureau of Public Health Laboratories Viral Surveillance	5
County Influenza Activity	6
Pediatric Influenza-Associated Mortality	8
ESSENCE-FL Pneumonia and Influenza Mortality Data	9
NREVSS Respiratory Virus Surveillance	10
Influenza and ILI Outbreaks Reported in EpiCom	10
Florida ILI Surveillance System Summary	11

County Influenza Activity Week 20, 2013



Thirty counties reported mild influenza activity. For more information, see page 6.

Influenza Outbreaks Week 40, 2012 – Week 20, 2013



Fifty-four outbreaks of influenza or ILI have been reported since October, 2012 (none in week 20, 2013). For more information, see page 10.

Descriptions of Florida influenza and ILI surveillance systems can be found on page 11.

TABLE 1: Summary of Florida Influenza-Like Illness (ILI) Activity for Week 20

Measure	Difference from Previous Week	Current Week 20	Previous Week 19	Page of Report
Overall statewide activity code reported to CDC	No Change	Sporadic	Sporadic	1
Percent of visits to ILINet providers for ILI	▼ 0.2	0.8%	1.0%	2
Percent of emergency department visits (from ESSENCE-FL) due to ILI	▼ 0.1	1.7%	1.8%	3
Percent of laboratory specimens that were positive for influenza	▲ 9	16.7%	7.7%	5
Number of counties reporting moderate influenza activity	▼ 1	0	1	6
Number of counties reporting widespread influenza activity	No Change	0	0	6
Number of counties reporting increasing influenza activity	▼ 3	0	3	7
Number of counties reporting decreasing influenza activity	▲ 1	33	32	7
Number of ILI outbreaks reported in EpiCom	No Change	0	0	10

ILINet Influenza-Like Illness-Statewide

ILINet is a nationwide surveillance system composed of sentinel providers. Florida has 110 providers enrolled in ILINet who submit weekly ILI and total visit counts, as well as submitting ILI specimens to the Bureau of Public Health Laboratories (BPHL) for confirmatory testing. For this season, the Bureau of Epidemiology (DCBE) has designated 13 of these ILINet physicians' offices as Super-Sentinels. These Super-Sentinels receive more active follow-up from DCBE and participating county health departments, with the goal of increasing data quality and surveillance specimen submission.

FIGURE 1 shows the percentage of visits for ILI* reported by ILINet sentinel providers statewide.

The percent of visits to sentinel outpatient physicians for ILI has been flat.

54 of 110 ILINet Sentinels reported visit counts as of 12:00 p.m., May 22, 2013.

8 of 13 ILINet Super-Sentinels reported visit counts as of 12:00 p.m., May 22, 2013.

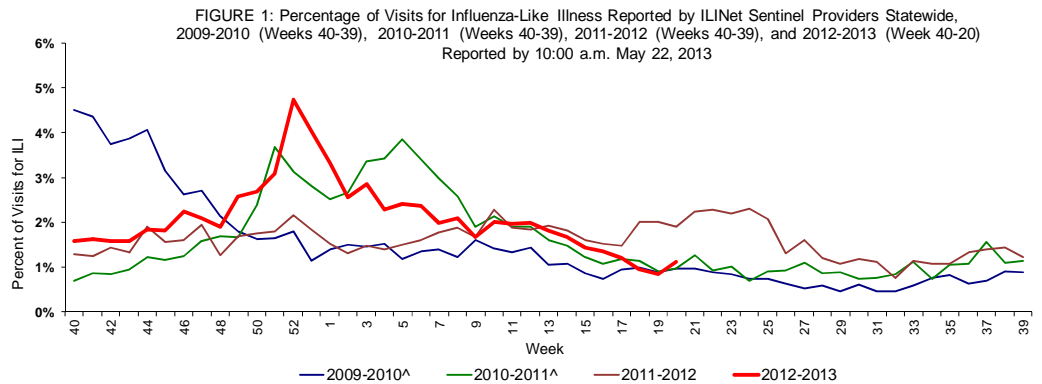
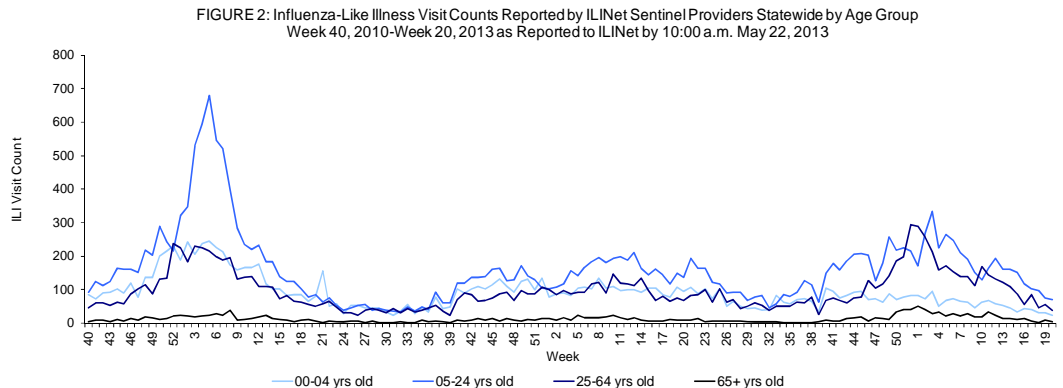


FIGURE 1: Percentage of Visits for Influenza-Like Illness Reported by ILINet Sentinel Providers Statewide, 2009-2010 (Weeks 40-39), 2010-2011 (Weeks 40-39), 2011-2012 (Weeks 40-39), and 2012-2013 (Week 40-20) Reported by 10:00 a.m. May 22, 2013

*ILI = Influenza-like illness, fever >100°F AND sore throat and/or cough *in the absence* of another known cause.
 ^There is no week 53 during the 2009-2010, 2010-2011, and 2011-12 seasons; the week 53 data point for those seasons is an average of weeks 52 and 1.

FIGURE 2 shows ILI visit counts reported by ILINet sentinel providers statewide by age group.

In week 20, the number of visits to sentinel outpatient physicians for ILI decreased in all age groups.



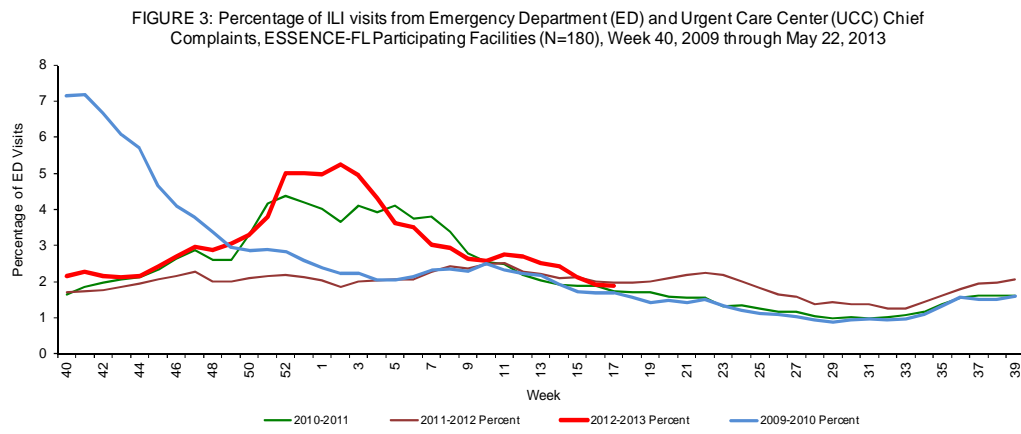
[Return to Top](#)

†Data presented here are counts, not proportions as included in Figure 2. This is because age group denominator data is not available through ILINet.

ESSENCE-FL collects data daily from 180 hospital emergency departments (ED) and urgent care centers (UCC). These data are processed into 11 different syndrome categories based on the patient's chief complaint. One of the categories is ILI, which is composed of chief complaints that include the words "influenza" or "flu," or complaints that contain fever plus cough or sore throat.

FIGURE 3 shows ESSENCE-FL data on ILI visits to EDs and UCCs as a percentage of all visits.

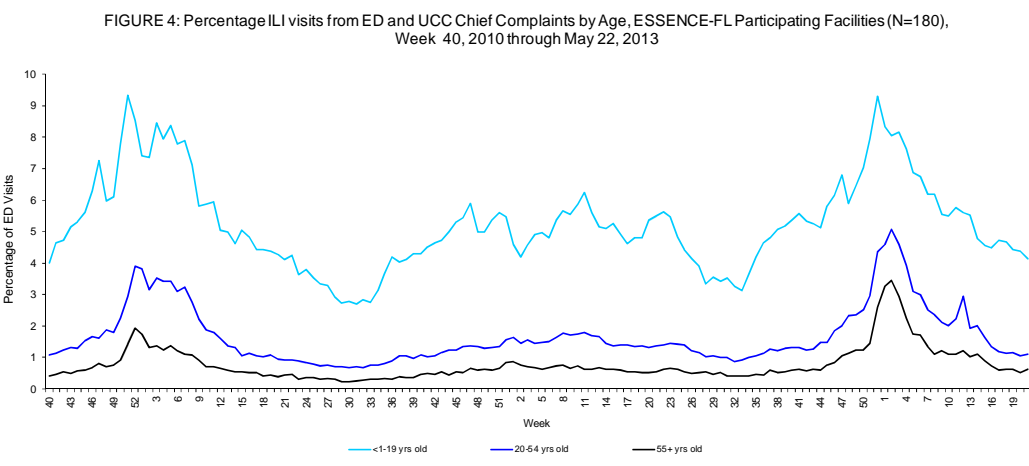
The percent of visits to emergency departments for ILI continues to decline, and is near expected levels for this time of year.



*There is no week 53 for the 2007-2008, 2009-2010, and 2010-2011 seasons; the week 53 data point for those seasons is an average of weeks 52 and 1.

FIGURE 4 shows percentage of ILI among all ED and UCC visits by age

In the current week, the percent of visits to emergency departments and urgent care centers for ILI is similar to previous years at this time for all age groups.



One hundred five ESSENCE-FL participating facilities are able to provide discharge disposition data for their ED visits going back to week 40, 2010. Using this information, the percent of ED visits for ILI that result in hospitalization can be calculated. The highest percentage of admissions is in the 55+ years old age group. The low number of visits in the 55+ age group causes variability in the ILI admission percentage from week to week.

FIGURE 5 shows the percentage of ED and UCC visits for ILI that resulted in hospitalization, by age group.

Of persons 55 years and older that visited an emergency department with ILI complaints, between 25% and 30% were admitted.

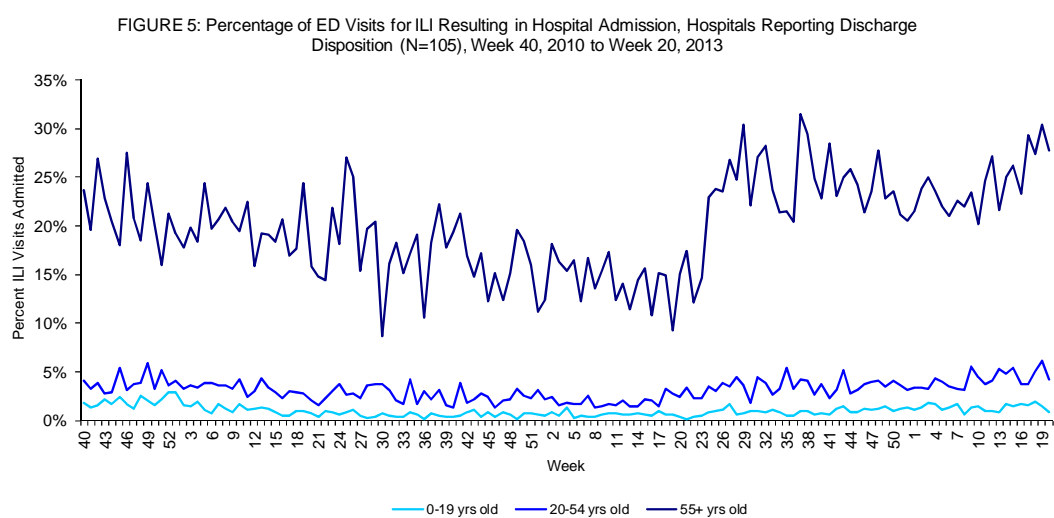


FIGURE 6 - FIGURE 12 describe ED and UCC chief complaint data from ESSENCE-FL by Regional Domestic Security Task Force (RDSTF).

The percent of emergency department and urgent care center visits for ILI is near expected levels in all regions of Florida.

Map 1: Emergency Departments and Urgent Care Centers reporting data to ESSENCE-FL, May 22, 2013 (N=182)

FIGURE 6: Percentage of ILI visits from ED Chief Complaints, RDSTF Region 1 ESSENCE-FL Participating Hospitals (N=9), Week 40, 2009 through May 22, 2013

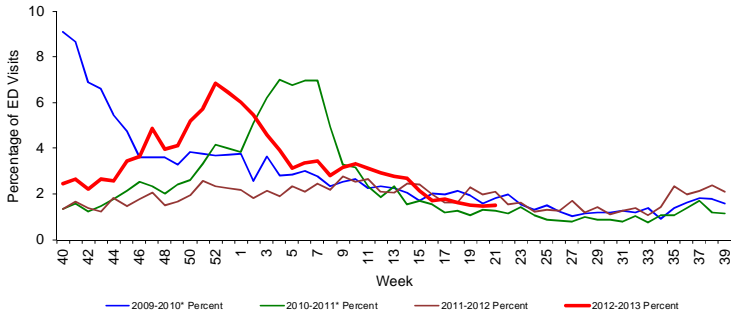


FIGURE 7: Percentage of ILI visits from ED Chief Complaints, RDSTF Region 2 ESSENCE-FL Participating Facilities (N=4), Week 40, 2009 through May 22, 2013

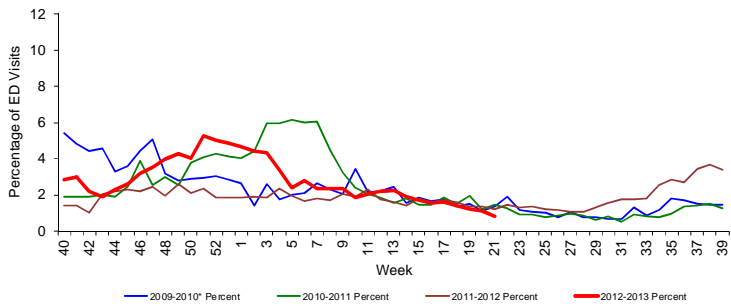


FIGURE 9: Percentage of ILI visits from ED and UCC Chief Complaints, ESSENCE-FL Participating Facilities (N=36), Week 40, 2009 through May 22, 2013

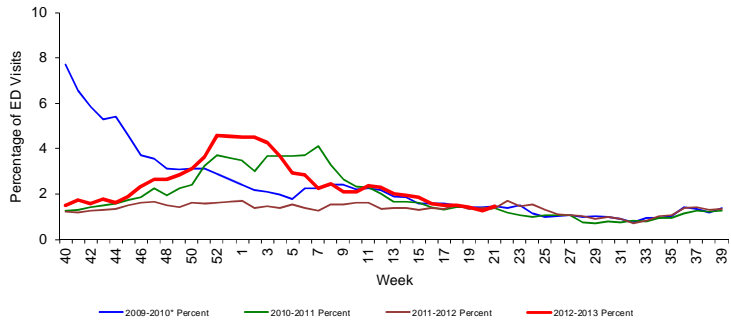


FIGURE 8: Percentage of ILI visits from ED Chief Complaints, RDSTF Region 3 ESSENCE-FL Participating Facilities (N=17), Week 40, 2009 through May 22, 2013

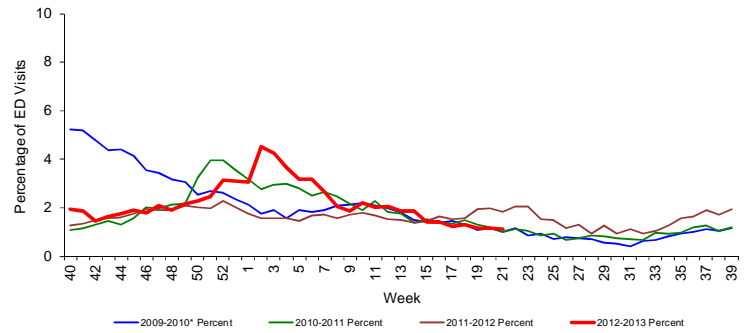


FIGURE 10: Percentage of ILI visits from ED and UCC Chief Complaints, ESSENCE-FL Participating Facilities, RDSTF Region 5 ESSENCE-FL Participating Facilities (N=52), Week 40, 2009 through May 22, 2013

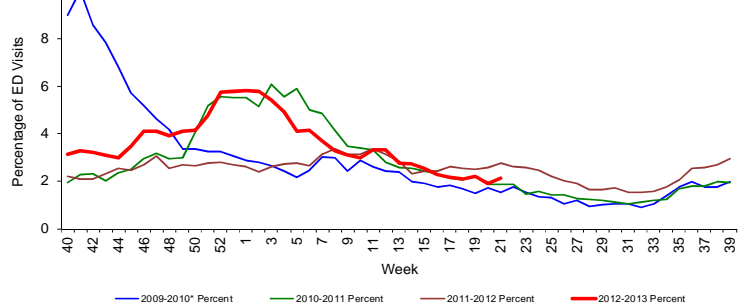


FIGURE 11: Percentage of ILI visits from ED Chief Complaints, RDSTF Region 6 ESSENCE-FL Participating Facilities (N=15), Week 40, 2009 through May 22, 2013

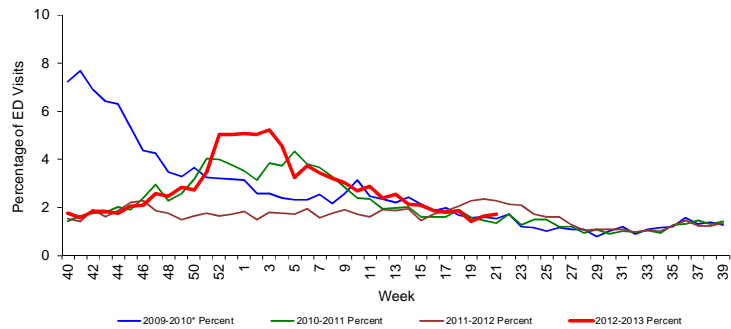


FIGURE 12: Percentage of ILI visits from ED and UCC Chief Complaints, ESSENCE-FL Participating Facilities, RDSTF Region 7 ESSENCE-FL Participating Facilities (N=49), Week 40, 2009 through May 22, 2013

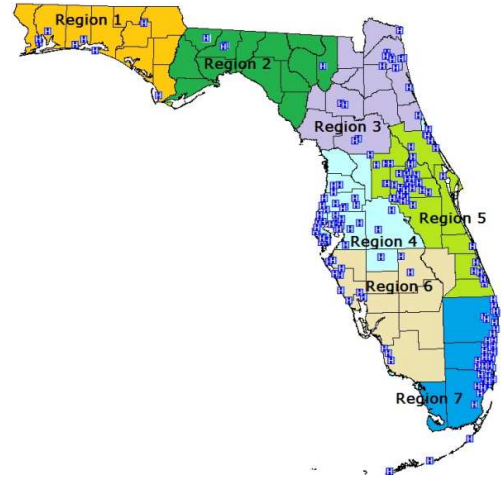
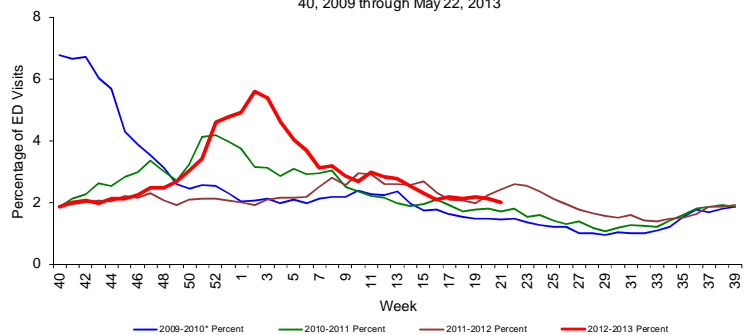


TABLE 2 shows the number of specimens tested by BPHL, how many are influenza positive, and their subtypes.

FIGURE 13 - FIGURE 14 use BPHL viral surveillance data to track the progress of influenza infection over time. They include weekly information on how many specimens are tested by the BPHL, what proportion of those test positive for influenza, and what subtypes are identified.

Recent influenza specimens submitted to BPHL tested positive for influenza A H3, 2009 H1N1, and influenza B.

In recent weeks, influenza B has been the most common strain detected by BPHL. Specimen submissions have decreased as ILI visits and other influenza indicators have declined.

In addition to PCR testing, BPHL also cultures influenza specimens, including those positive for influenza B.

There are two distinct antigenic lineages of influenza B, known as Victoria and Yamagata. Both have circulated in Florida in the past year.

At BPHL this season, 27 specimens have tested positive for Victoria lineage influenza B and 9 specimens have tested positive for Yamagata lineage influenza B. Last year's 2011-12 vaccine included a Victoria lineage virus, while this year's 2012-2013 vaccine includes a Yamagata lineage virus. Influenza viruses that circulate at the beginning of the flu season may be different than those that circulate later in the year, and these specimens represent a very small sample of statewide influenza activity. Not all flu positive specimens are cultured. FDOH will continue to monitor subtype and lineage for influenza viruses.

Table 2: Bureau of Public Health Laboratories (BPHL) Viral Surveillance for Week 20 by Lab Event Date* as reported by 10:00 a.m. May 22, 2013

	Current Week 20	Previous Week 19
Total Specimens Tested	6	13
Influenza positive specimens (% of total)	1 (16.7%)	1 (7.7%)
H1N1 positive specimens (% of influenza positives)	1 (100%)	1 (100%)
Influenza A H3	-	-
Influenza A not yet subtyped	-	-
Influenza B unspecified	-	-

FIGURE 13: Number of Influenza-Positive Specimens Tested by the Florida Bureau of Public Health Laboratories (BPHL) by Subtype by Lab Event Date* Week 1, 2011 to Week 20, 2013 as Reported in Merlin by 10:00 a.m. May 22, 2013

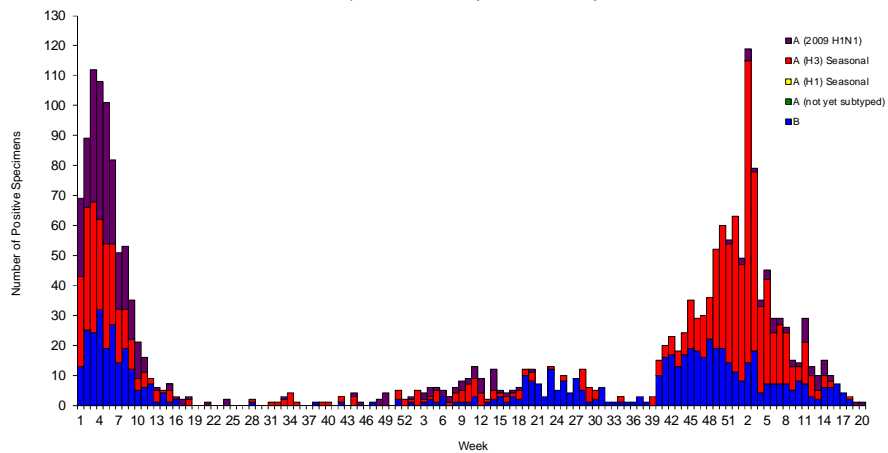
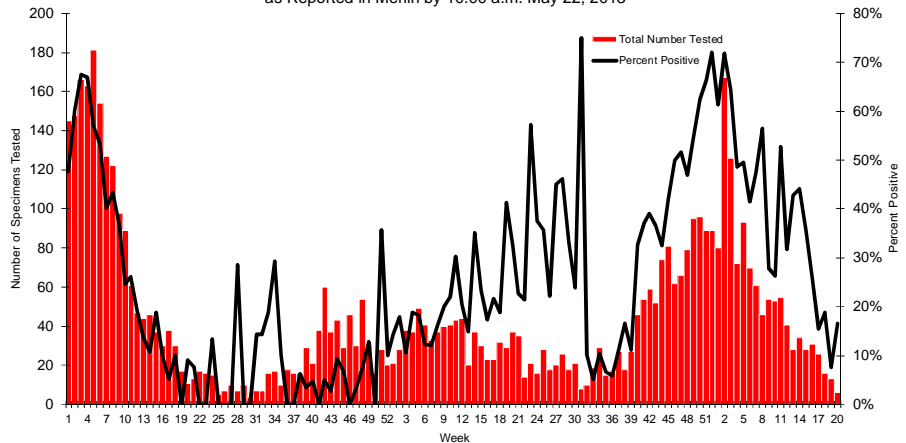


FIGURE 14: Number of Specimens Tested by Florida Bureau of Public Health Laboratories (BPHL) and Percent Positive for Influenza by Lab Event Date* Week 1, 2011 to Week 20, 2013 as Reported in Merlin by 10:00 a.m. May 22, 2013



*Please note that lab event date is defined as the earliest of the following dates associated with the lab: date collected, date received by the laboratory, date reported, or date inserted.

For county-specific laboratory data, please refer to the Flu Lab Report in Merlin.

For instructions on how to use the Flu Lab Report, please see the Guide to Flu Lab Report on the Bureau of Epidemiology website:

http://www.doh.state.fl.us/disease_ctrl/epi/htopics/flu/FluLabReportGuide.pdf

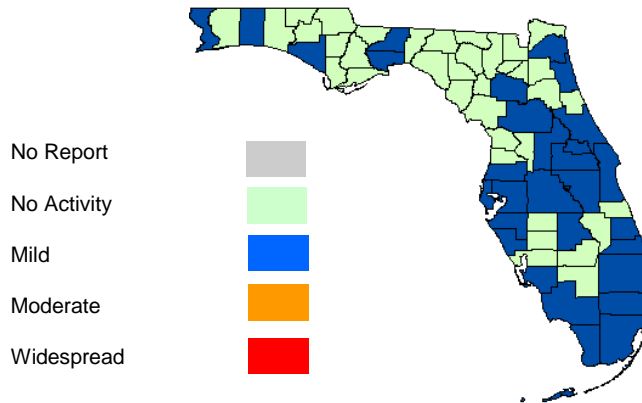
As of 10:00 a.m. May 22, 2013 a total of 67 (100%) counties had reported their weekly level of influenza activity. *Please note that data reported by counties after the deadline Tuesday at 5 p.m. are recorded but may not be included in the activity map for previous weeks.*

TABLE 3: Weekly County Influenza Activity for Week 20 (ending May 18, 2013) as Reported by 10:00 a.m. May 22, 2013

Activity Level	Week 19 Number of Counties	Week 20 Number of Counties	Week 20 Counties
No Report	-	-	-
No Activity	38	37	Baker, Bradford, Calhoun, Charlotte, Citrus, Clay, Columbia, Desoto, Dixie, Flagler, Franklin, Gadsden, Gilchrist, Glades, Gulf, Hamilton, Hardee, Hendry, Hernando, Holmes, Indian River, Jackson, Jefferson, Lafayette, Levy, Liberty, Madison, Nassau, Okeechobee, Putnam, Santa Rosa, Sumter, Suwannee, Taylor, Union, Walton, Washington
Mild	28	30	Alachua, Bay, Brevard, Broward, Collier, Dade, Duval, Escambia, Highlands, Hillsborough, Lake, Lee, Leon, Manatee, Marion, Martin, Monroe, Okaloosa, Orange, Osceola, Palm Beach, Pasco, Pinellas, Polk, Sarasota, Seminole, St. Johns, St. Lucie, Volusia, Wakulla
Moderate	1	0	-
Widespread	-	-	-

Map 2: Weekly County Influenza Activity for Week 20 as Reported by 10:00 a.m. May 22, 2013

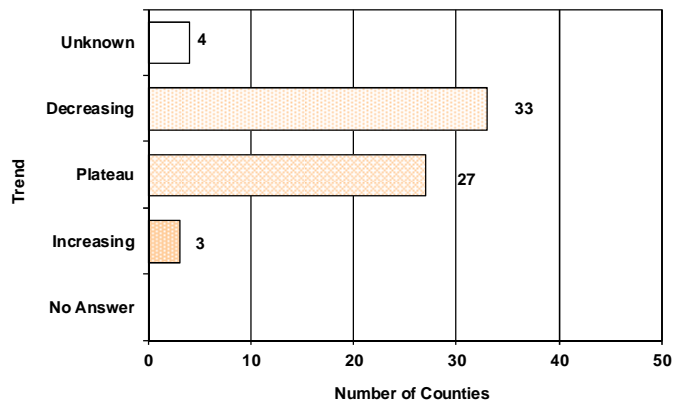
All counties report No or Mild activity.



County influenza activity data is reported to the DCBE through EpiGateway on a weekly basis by the county influenza coordinator. Specific information is requested about laboratory results, outbreak reports, and surveillance system activity. Figures 16-25 displayed below reflect a county's assessment of influenza activity within their county as a whole as well as influenza activity within specific settings. For week 20, 33 counties indicated that activity was decreasing, 27 indicated it was about the same as previous weeks, and one indicated that activity was increasing.

FIGURE 15 shows the assessment of the overall influenza activity trend in each county as reported by county health department flu coordinators for week 20 as of 10:00 a.m. May 22, 2013.

FIGURE 15: Assessment of Overall Influenza Activity Trend



Definitions for the County Influenza Activity Trends are available at: http://www.doh.state.fl.us/disease_ctrl/epi/CountyInfluenzaTrendGuide.html

Counties are asked to evaluate influenza activity in certain settings within their county. Each setting has a scale for activity that ranges from none or minimal activity to very high activity. What defines each of the values varies by facility type, but the example of the assessment in elementary, middle, and high schools is included below. More detailed information on the meanings of the levels for each setting can be found on the webpage also included below.

No or very minimal activity -- Scattered cases of ILI with no increase in absenteeism or disruption of school activities.

Moderate activity -- Absenteeism elevated above baseline (in range of 10 to 25%) in some but fewer than half of schools where it is known; occasional children sent home because of ILI.

High activity -- Absenteeism elevated above baseline (in range of 10 to 25%) in more than half of schools; most schools sending several or many children home each day because of ILI.

Very high activity -- Absenteeism high enough to force curtailment of some or all school activities.

County influenza settings assessment guides are available at:
http://www.doh.state.fl.us/disease_ctrl/epi/FluAssessment.htm

FIGURE 16 - FIGURE 19 show the activity levels in various facilities by county as reported by county health department flu coordinators for week 20 as of 10:00 a.m., May 22, 2013.

FIGURE 16: Assessment of Influenza Activity in Elementary, Middle, and High Schools

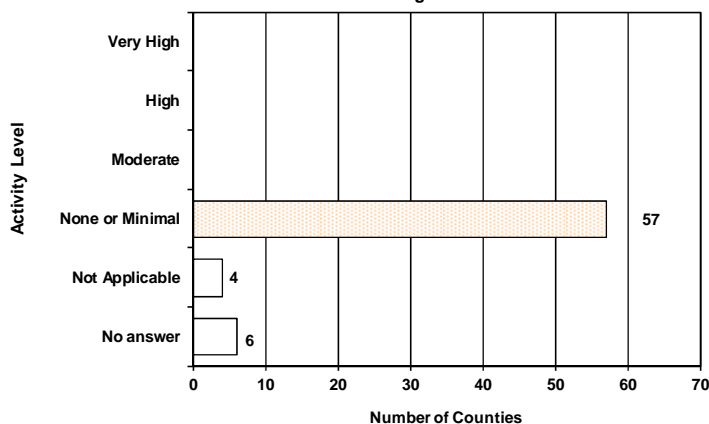


FIGURE 17: Assessment of Influenza Activity in Colleges and Universities

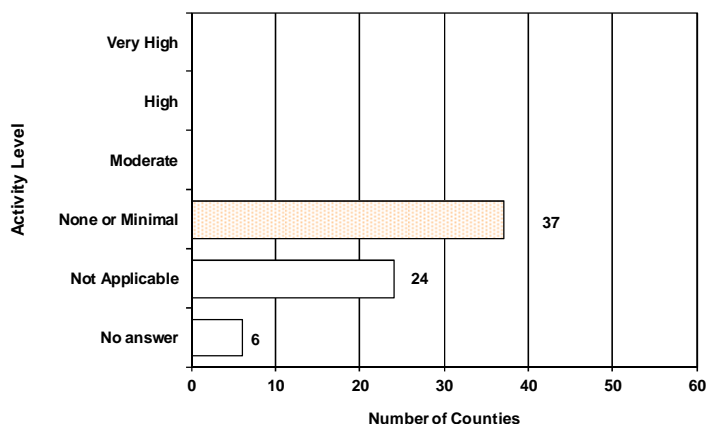


FIGURE 18: Assessment of Influenza Activity in Jails/Prisons

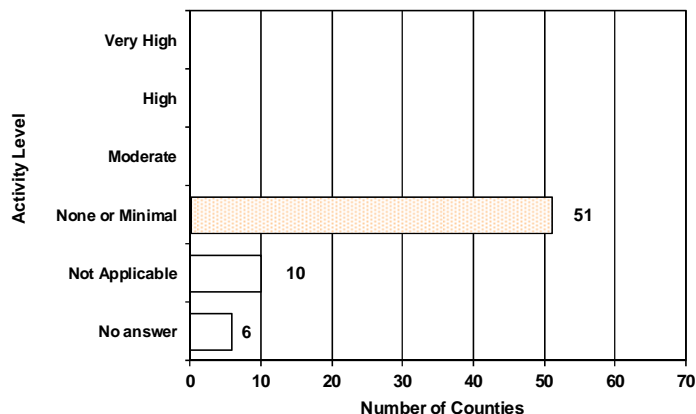


FIGURE 19: Assessment of Influenza Activity in Retirement Facilities

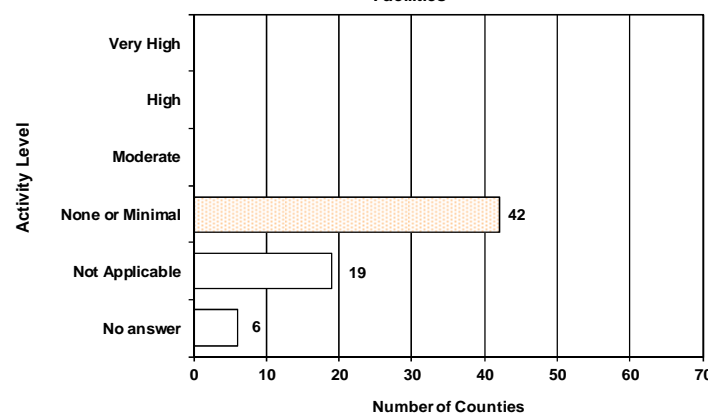
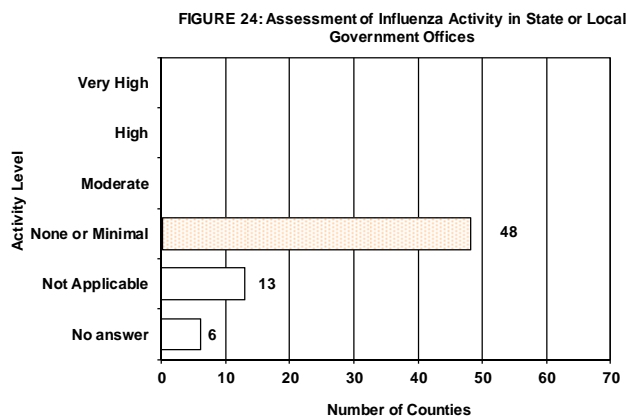
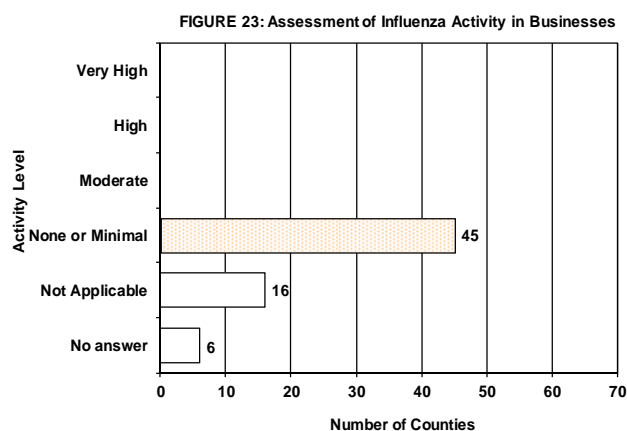
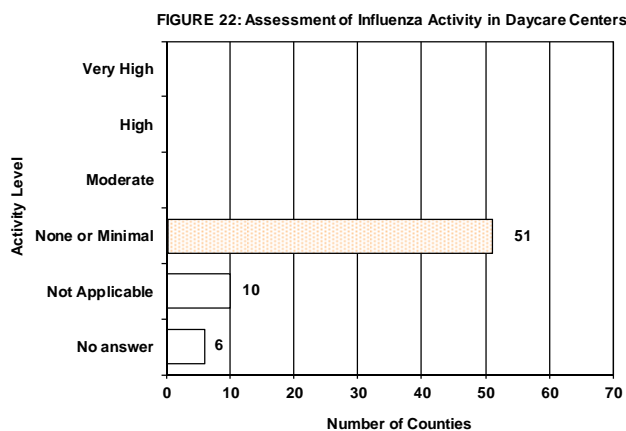
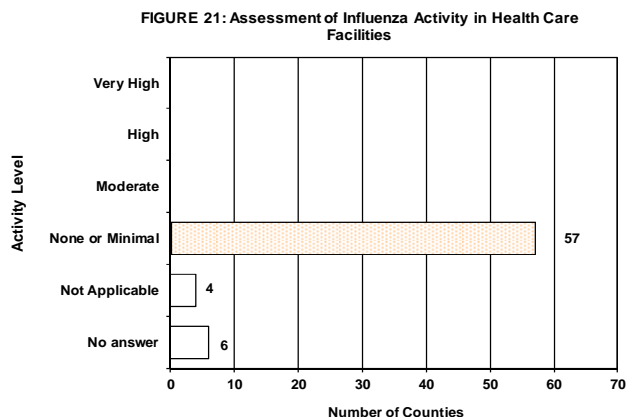
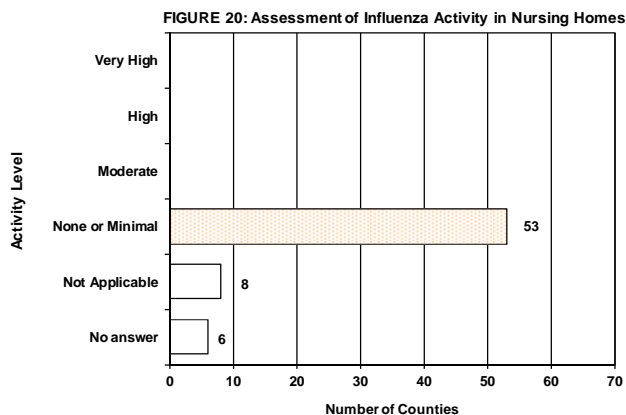


FIGURE 20 - FIGURE 24 show the activity levels in various facilities by county as reported by county health department flu coordinators for week 20 as of 10:00 a.m., May 22, 2013.



Pediatric Influenza-Associated Mortality

In week 20, 2013, there were no influenza-associated pediatric deaths reported in Florida.

Eight influenza-associated pediatric deaths have been reported in Florida since October, 2012.

Over the past year, the FDOH Bureau of Vital Statistics and county health departments have been rolling out an electronic death record system for Florida. ESSENCE-FL now displays electronic vital statistics death record data from all 67 Florida counties. For pneumonia and influenza surveillance, death record literals are queried in ESSENCE-FL using a free-text query that searches for references to pneumonia and influenza on death certificates. Any mention of pneumonia or influenza in the death certificate literals, with certain exceptions, is counted as a pneumonia and influenza death. Current season pneumonia and influenza death numbers are preliminary estimates, and may change as more data are received. *The most recent data available are displayed here. ESSENCE-FL vital statistics death records data are currently considered to be complete through week 19, 2013.*

FIGURE 25 shows the count of preliminary estimated pneumonia and influenza deaths for all Florida counties, the number of deaths predicted using a multi-year regression model, and the upper bound of the 95% confidence interval for this prediction.

- For week 19 (ending May 11, 2013) there were:
- **185 preliminary estimated pneumonia and influenza deaths reported**
 - **Upper bound of 95% confidence interval for prediction: 197 deaths**
 - **No excess deaths.**

FIGURE 26 shows pneumonia and influenza deaths for all Florida counties, Week 40, 2010 - Week 21, 2013, as reported into ESSENCE-FL.

FIGURE 27 shows pneumonia and influenza deaths for all Florida counties by age group, Week 40, 2010 - Week 21, 2013, as reported into ESSENCE-FL.

Figure 25: Vital Statistics Statewide Pneumonia and Influenza Deaths, Multi-Year Regression Model Week 17, 2000-Week 19, 2013, as reported into ESSENCE-FL

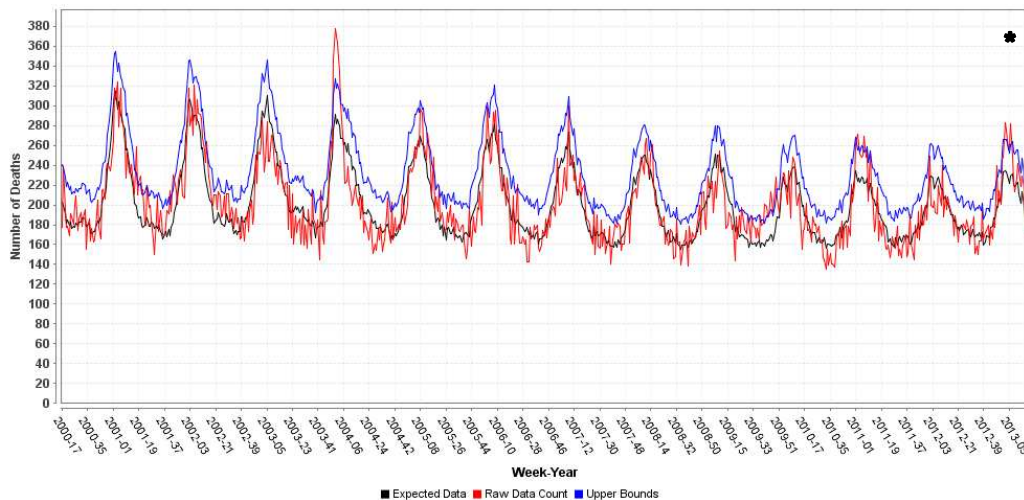


FIGURE 26: Vital Statistics Statewide Pneumonia and Influenza Deaths, as reported into ESSENCE-FL, Week 40, 2009-Week 21, 2013

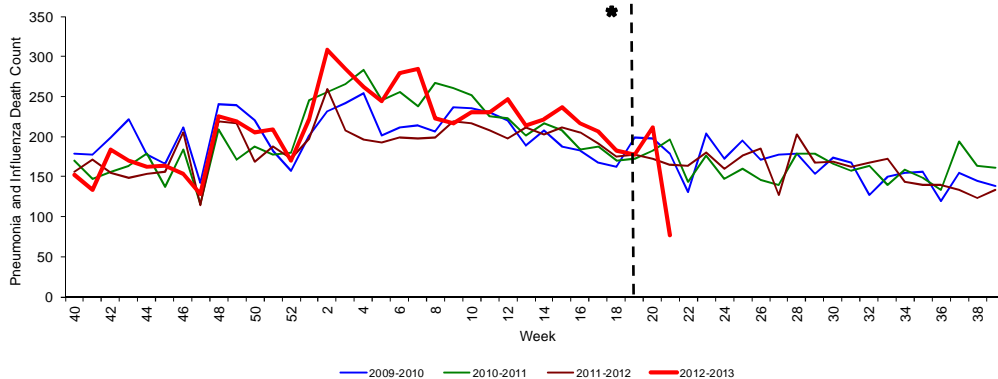
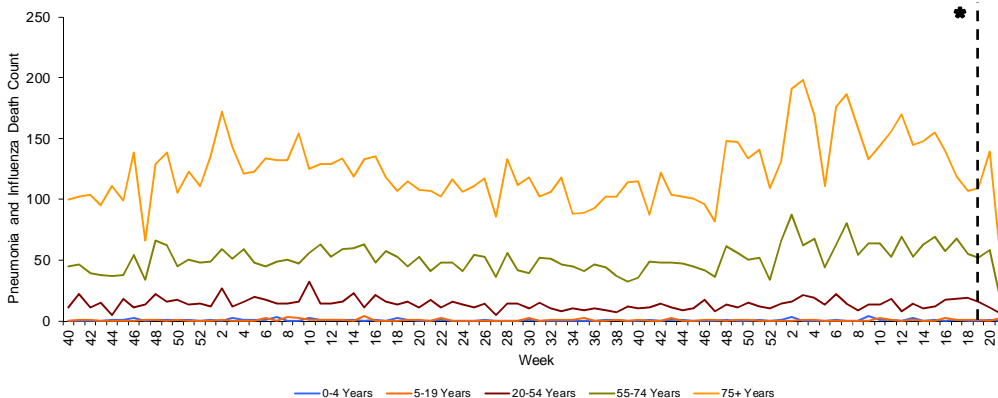


FIGURE 27: Vital Statistics Florida Pneumonia and Influenza Deaths by Age Group, as reported into ESSENCE-FL, Week 40, 2010-Week 21, 2013



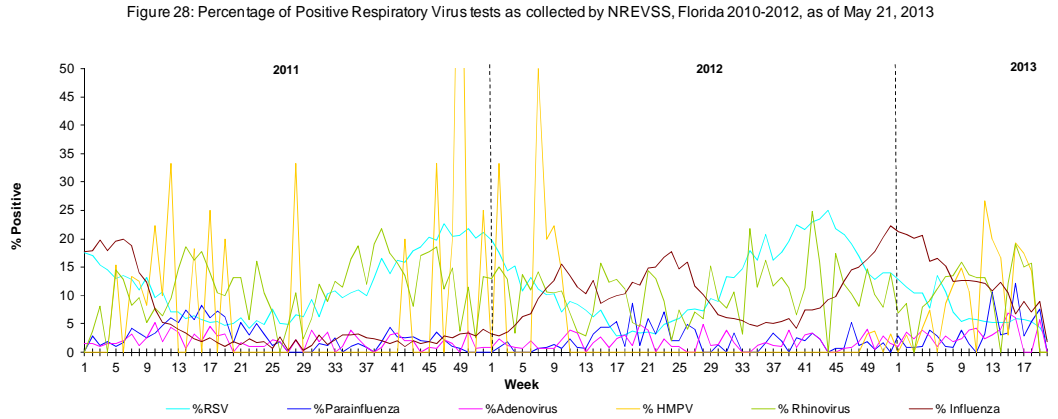
* Death records data reported into ESSENCE-FL are currently considered to be complete through week 19, 2013.

The National Respiratory and Enteric Virus Surveillance System (NREVSS) collects data from laboratories around the country on a weekly basis. NREVSS monitors temporal and geographic patterns of six common respiratory viruses. Fifteen Florida facilities reported in week 19.

FIGURE 29 shows the percentage of positive tests for multiple respiratory viruses reported by NREVSS-participating laboratories in Florida.

The 6 respiratory viruses summarized in Figure 29 are:

- Respiratory Syncytial Virus (RSV)
- Parainfluenza 1-3
- Adenovirus
- Human Metapneumovirus (HMPV)
- Rhinovirus
- Influenza



Influenza and ILI Outbreaks

In week 20, 2013 there were **no** influenza or ILI outbreaks reported in EpiCom.

Fifty-four outbreaks of influenza or ILI have been reported so far in the 2012-2013 flu season.

Map 3: Influenza and ILI outbreaks by county, Week 40, 2012 - Week 20, 2013 as Reported by 11:00 a.m. May 22, 2013

Fifty-four influenza or ILI outbreaks have been reported into EpiCom in the 2012-2013 season.

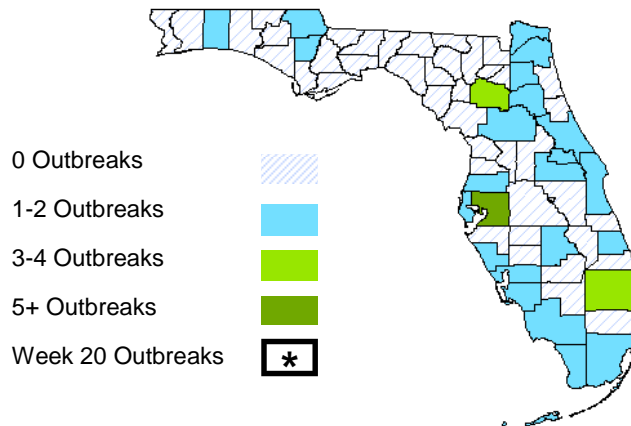


TABLE 4 : Summary of Florida ILI Outbreaks by Facility Status, Week 40, 2012-Week 20, 2013

Setting	Number of outbreaks	Implicated Viruses
Correctional facility or jail	5	<ul style="list-style-type: none"> Two outbreaks due to influenza A H3 One outbreak was due to influenza B One outbreak was due to influenza A (subtype not identified) One outbreak was due to influenza that was not typed as influenza A or B
Domestic violence shelter	1	<ul style="list-style-type: none"> One outbreak was due to influenza that was not typed as influenza A or B
Facility for persons with disability	2	<ul style="list-style-type: none"> One outbreak was due to influenza A H3 One outbreak was due to influenza B
Nursing home	12	<ul style="list-style-type: none"> Three outbreaks were due to influenza that was not typed as influenza A or B Eight outbreaks were due to influenza A (subtype not identified) One outbreak was due to influenza A (subtype not identified) and influenza B
Long-term care facility	9	<ul style="list-style-type: none"> Two outbreaks were due to influenza A H3 One outbreak was due to influenza B Six outbreaks were due to influenza A (subtype not identified)
Assisted living facility	8	<ul style="list-style-type: none"> Six outbreaks were due to influenza A (subtype not identified) One outbreak was due to influenza that was not typed as influenza A or B One outbreak was due to influenza A H3
Short-term rehabilitation facility	1	<ul style="list-style-type: none"> One outbreak was due to influenza A (subtype not identified)
School or Daycare facility	16	<ul style="list-style-type: none"> Seven outbreaks were due to influenza A (subtype not identified) Two outbreaks were due to influenza B Three outbreaks were due to influenza A (subtype not identified) and influenza B Four outbreaks were due to influenza that was not typed as influenza A or B
Total	54	<ul style="list-style-type: none"> Twenty-eight outbreaks were due to influenza A (subtype not identified) Four outbreaks were due to influenza B Six outbreaks were due to influenza A H3 Eight outbreaks were due to influenza that was not typed as influenza A or B Five outbreaks were due to influenza A (subtype not identified) and influenza B

Florida Surveillance System Summary

Florida ILINet

Measures trends in ILI visits to outpatient doctor's offices

Doctors submit specimens from ill patients for influenza testing

Network of volunteer healthcare providers who:
 Report ILI and total visit counts every week
 Submit specimens for confirmatory testing

ESSENCE-FL Syndromic Surveillance

Measures trends in ILI visits and hospital admissions from emergency departments and urgent care clinics

Emergency departments and urgent care clinics electronically transmit visit data into ESSENCE-FL daily

Visit data summarized in the Florida Flu Review include:
 Percent of ED/urgent care visits due to ILI
 Percent of ED/urgent care visitors with ILI who are admitted to the hospital

ESSENCE-FL Vital Statistics Portal

Death certificates with pneumonia or influenza listed as a cause of death are used as a proxy to measure influenza mortality

Death certificate data from the Bureau of Vital Statistics can be accessed through ESSENCE-FL

Vital statistics data in ESSENCE are used for pneumonia and influenza mortality surveillance

County Influenza Activity in EpiGateway

Uses data provided by CHDs to create a county-by-county breakdown of influenza and ILI activity around the state

CHD epidemiologists report their county's influenza and ILI surveillance data weekly into the EpiGateway website

Influenza activity is classified as: No Activity, Mild, Moderate, or Widespread

Setting-specific influenza activity and influenza trend is also reported

Outbreak Reporting in EpiCom

Tracks influenza and ILI outbreak investigations by CHDs

Shows what types of influenza are responsible for outbreaks and where outbreaks are occurring

CHD epidemiologists report outbreaks of influenza or ILI into EpiCom, Florida's online disease communication system

Outbreaks are defined as two or more cases of influenza or ILI in a specific setting

BPHL Viral Surveillance

BPHL performs confirmatory testing and subtyping on surveillance specimens

Surveillance specimens come from ILINet sentinel providers, outbreak investigations, patients with severe or unusual influenza presentations, and medical examiners

Case-Based Influenza Surveillance

Pediatric Influenza-Associated Mortality

Deaths in children with laboratory-confirmed influenza infection are reportable in Florida

Influenza due to Novel or Pandemic Strains

Patients with influenza infection due to novel or pandemic strains are reportable in Florida

NREVSS

Measures trends in different viruses that cause respiratory disease

Network of laboratories who report counts of test results for common respiratory viruses, including influenza, RSV, rhinovirus, and others

Information on locating influenza vaccination can be found using the flu vaccine locator at: <http://flushot.healthmap.org/>