



## Florida Arbovirus Surveillance Week 2: January 8-14, 2017

Arbovirus surveillance in Florida includes endemic mosquito-borne viruses such as West Nile virus (WNV), Eastern equine encephalitis virus (EEEV), and St. Louis encephalitis virus (SLEV), as well as exotic viruses such as dengue virus (DENV), chikungunya virus (CHIKV) and California encephalitis group viruses (CEV). Malaria, a parasitic mosquito-borne disease is also included. During the period of January 8-14, 2017 the following arboviral activity was recorded in Florida.

[There have been no reports in 2017 of arbovirus cases in humans or horses and no antibody positive sentinels. Numbers here are for onsets in the 2016 calendar year unless otherwise noted.](#)

**WNV activity:** No human cases of WNV infection were reported this week. No horses with WNV infection were reported this week. Two sentinel chickens tested positive for antibodies to WNV this week in Citrus County. In 2016, positive samples from 212 sentinel chickens, six humans, one blood donor, one horse, one crow, and five mosquito pools have been received from 29 counties.

**SLEV activity:** No human cases of SLEV infection were reported this week. No sentinel chickens tested positive for antibodies to SLEV this week. In 2016, positive samples from six sentinel chickens have been received from two counties.

**EEEV activity:** No human cases of EEEV infection were reported this week. No horses with EEEV infection were reported this week. No sentinel chickens tested positive for antibodies to EEEV this week. In 2016, positive samples from 90 sentinel chickens and 23 horses have been received from 25 counties.

**International Travel-Associated Dengue Fever Cases:** No cases of dengue fever were reported this week in persons that had international travel. In 2016, 44 travel-associated cases have been reported.

**Dengue Fever Cases Acquired in Florida:** No cases of locally acquired dengue fever were reported this week in Miami-Dade County. In 2016, two cases of locally acquired dengue fever have been reported.

**International Travel-Associated Chikungunya Fever Cases:** No cases of chikungunya fever were reported this week. In 2016, six travel-associated cases have been reported.

**Chikungunya Fever Cases Acquired in Florida:** No cases of locally acquired chikungunya fever were reported this week. In 2016, no cases of locally acquired chikungunya fever have been reported.

**International Travel-Associated Zika Fever Cases:** Fourteen cases of Zika fever were reported this week in persons that had international travel. In 2016, 1030 travel-associated cases have been reported.

**Zika Fever Cases Acquired in Florida:** One case of Zika fever was reported this week in a person that had no international travel. In 2016, 257 local cases have been reported.

**Advisories/Alerts:** Escambia County is currently under mosquito-borne illness alert. Duval, Manatee, Monroe, and Okaloosa Counties are currently under mosquito-borne illness advisory. Thirty-eight counties are currently under a declared public health emergency due to the identification of travel-associated Zika infections: Alachua, Bay, Brevard, Broward, Charlotte, Citrus, Clay, Collier, Duval, Escambia, Flagler, Hernando, Highlands, Hillsborough, Indian River, Lake, Lee, Leon, Manatee, Marion, Martin, Miami-Dade, Monroe,

Nassau, Okaloosa, Okeechobee, Orange, Osceola, Palm Beach, Pasco, Pinellas, Polk, St. Johns, St. Lucie, Santa Rosa, Sarasota, Seminole, and Volusia Counties.

Florida no longer has any identified areas with ongoing active Zika transmission. Zika zones were lifted in Wynwood (September 19), North Miami Beach (November 22), Little River (December 2), and South Miami Beach (December 9) after 45 days with no evidence of active Zika transmission.

There is a Level 2 (Alert) Travel Health Notice from the CDC for multiple countries in the Caribbean, Central and South America, Mexico, Cape Verde, Southeast Asia, and Pacific Islands related to Zika virus transmission and an association with poor pregnancy outcomes. Pregnant women should consider postponing travel to these areas. There is a Level 1 (Watch) Travel Health Notice from the CDC for multiple countries in the Caribbean, Central and South America, and Mexico, related to the transmission of chikungunya virus. Additional information on travel health notices can be found at the following link: <http://wwwnc.cdc.gov/travel/notices>.

## 2016 Human Case Summary\*

**West Nile Virus Illnesses Acquired in Florida:** A total of six human cases of WNV illness acquired in Florida have been reported in 2016; one in Bay County (July), one in Duval County (August), two in Escambia County (August), one in Okaloosa County (July) and one in Santa Rosa County (August). One asymptomatic positive blood donor has been reported in Gulf County (October).

**International Travel-Associated Chikungunya Fever Cases:** Six cases of chikungunya with onset in 2016 have been reported in individuals with travel history to a chikungunya endemic country in the two weeks prior to onset. Countries of origin were Bahamas/Mexico, Bolivia (2), Brazil (2), and Jamaica. Counties reporting cases were Broward, Duval, Hillsborough, Palm Beach (2), and Pinellas.

**International Travel-Associated Dengue Fever Cases:** Forty-four cases of dengue with onset in 2016 have been reported in individuals with travel history to a dengue endemic country in the two weeks prior to onset. Countries of origin were: Brazil (3), Colombia (3), Costa Rica (5), Cuba (7), Dominican Republic (2), El Salvador, Ghana, Haiti (3), Honduras, India (2), Indonesia, Jamaica (6), Mexico, Puerto Rico (2), St. Barthelemy, Singapore, Thailand, and Venezuela (3). Counties reporting cases were: Alachua (2), Brevard, Broward (10), Clay, Columbia, Hillsborough (2), Lee, Manatee, Miami-Dade (9), Monroe, Orange (5), Pinellas (2), Palm Beach (4), Sarasota, and Seminole (3). Two cases were reported in non-Florida residents. In 2016, 29 of the 44 cases of dengue reported in Florida have been serotyped by PCR. Additional serotyping and strain typing are being conducted.

	<b># of cases per serotype – 2016</b>
<b>DENV-1</b>	8
<b>DENV-2</b>	6
<b>DENV-3</b>	10
<b>DENV-4</b>	5
	<b>29</b>

**Dengue Fever Cases Acquired in Florida:** In 2016, a total of two cases of locally acquired dengue fever have been reported; one in Monroe County (May) and one in Miami-Dade County (September). One of these cases was reported in a non-Florida resident.

**International Travel-Associated Zika Fever Cases:** One thousand thirty cases of Zika fever have been reported in individuals with travel history to a country or area experiencing Zika virus activity. Countries of origin were: Anguilla, Antigua and Barbuda (3), Aruba/Curacao, Bahamas (10), Bahamas/Virgin Islands (2), Barbados (8), Barbados/Dominica (2), Belize (2), Bolivia (4), Brazil (8), Brazil/Bolivia/Peru, Brazil/Caribbean, Brazil/Haiti, Caribbean (4), Cayman Islands, Central America, Colombia (40), Costa Rica (4), Costa Rica/Nicaragua, Costa Rica/Panama, Cuba (11), Curacao (2), Curacao/Guyana, Dominica, Dominican Republic (142), Dominican Republic/Puerto Rico (3), Dominican Republic/Venezuela, Ecuador (2), El Salvador

(7), Grenada (4), Guadeloupe (3), Guatemala (17), Guyana (6), Haiti (81), Haiti/Virgin Islands, Honduras (36), Honduras/Guatemala, Honduras/Mexico, Jamaica (111), Jamaica/Panama, Martinique (3), Mexico (31), Mexico/Caribbean, Mexico/Panama, Mexico/Trinidad and Tobago, Nicaragua (117), Panama, Puerto Rico (213), St. Barthelemy/St. Martin (2), St. Eustatius (3), St. Lucia, St. Martin (3), Suriname, Trinidad and Tobago (28), Venezuela (71), and Virgin Islands (23). Counties reporting cases were: Alachua (10), Bay (4), Brevard (16), Broward (168), Charlotte (2), Citrus (2), Clay (6), Collier (23), Duval (11), Escambia (4), Flagler (2), Hernando (4), Highlands, Hillsborough (41), Indian River, Lake (4), Lee (14), Leon (2), Manatee (5), Marion (4), Martin (4), Miami-Dade (322), Monroe (9), Nassau, Okaloosa (4), Okeechobee, Orange (146), Osceola (38), Palm Beach (61), Pasco (9), Pinellas (22), Polk (31), St. Johns (4), St. Lucie (11), Santa Rosa, Sarasota (5), Seminole (25), and Volusia (12). Sixty-six cases were reported in non-Florida residents. One Polk County case and one Lee County case were acquired through sexual transmission. Florida is monitoring a total of 213 pregnant women, all of whom are also included in our total case counts following a change in the national case definition.

**Zika Virus Infections Acquired in Florida:** In 2016, 257 locally acquired Zika virus infections have been reported by Miami-Dade (242), Broward (5), Duval (1), Palm Beach (8), and Pinellas (1) Counties. Twenty-two of these cases were reported in non-Florida residents. The Duval County case is believed to have been acquired in Miami-Dade County. Most infections were linked to two focal areas in Miami-Dade County; 38 cases (including 2 out of state residents) were linked to the Wynwood area and 77 cases (including 13 out of state residents) were linked to the Miami Beach area. In addition, 19 individuals (including 3 out of state residents) reported travel to both Florida and countries with widespread Zika virus transmission and exposure location could not definitively be determined.

**International Travel-Associated Malaria Cases:** Sixty-eight cases of malaria with onset in 2016 have been reported. Countries of origin were: Africa (2), Angola, Benin, Burkina Faso, Cameroon (3), Central America, Chad (2), Colombia, Democratic Republic of the Congo (2), Dominican Republic, Gabon (2), Ghana, Haiti (10), Honduras, India (5), Indonesia, Liberia, Kenya (2), Mexico, Nigeria (15), Peru, Sierra Leone (3), South Africa, Sudan (2), Togo, Uganda (3), Venezuela (2) and Zambia. Counties reporting cases were: Alachua (2), Brevard (3), Broward (10), Duval (5), Escambia, Flagler, Gadsden, Hernando, Hillsborough (6), Lake, Lee (2), Leon, Miami-Dade (13), Okaloosa, Orange (9), Palm Beach (5), Pasco, St. Lucie (2), Sarasota, and Volusia (2). Seven cases were reported in non-Florida residents.

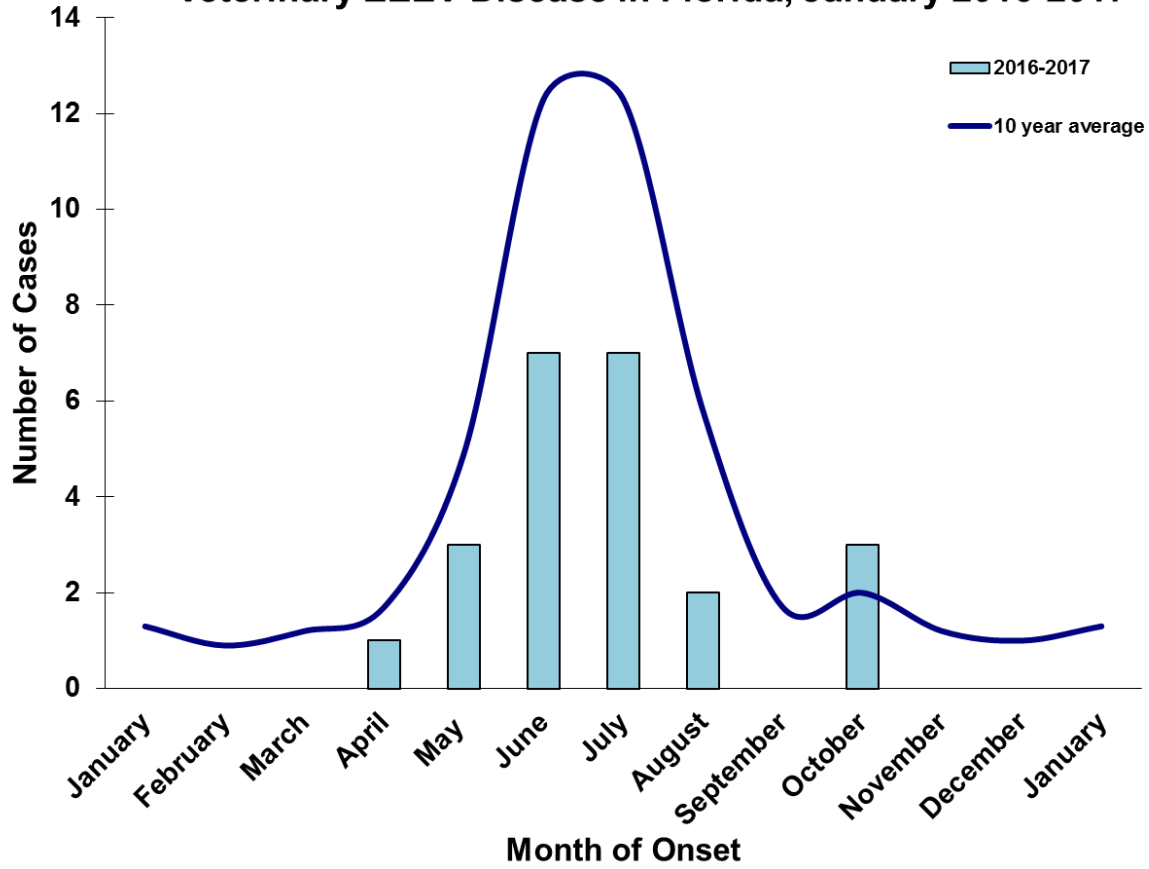
Fifty cases (74%) were diagnosed with *Plasmodium falciparum*. Twelve cases (18%) were diagnosed with *Plasmodium vivax*. Four cases (6%) were diagnosed with *Plasmodium ovale*. Two cases (3%) were diagnosed with *Plasmodium malariae*.

### Veterinary Cases\*

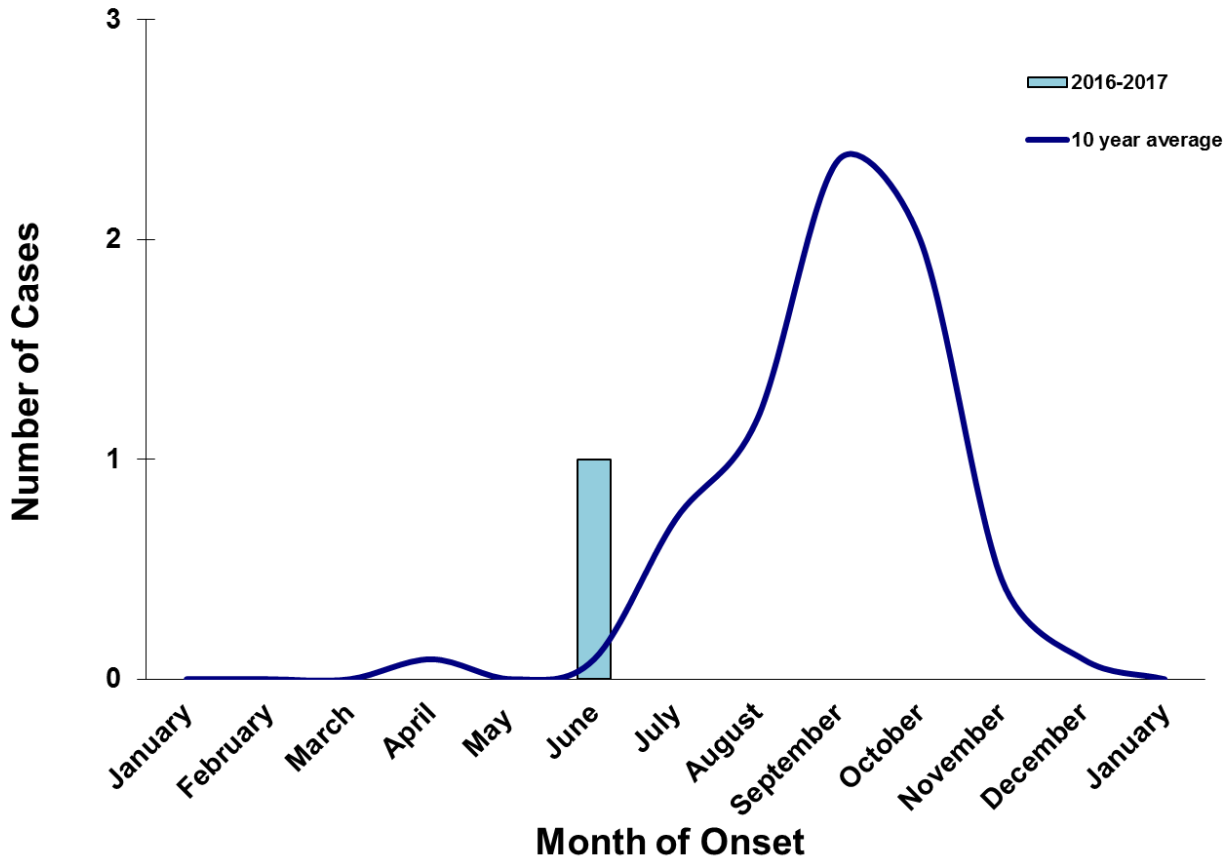
\*Veterinary cases are reported by date of onset

No horses with EEEV or WNV infection were reported this week.

**Veterinary EEEV Disease in Florida, January 2016-2017**



**Veterinary WNV Disease in Florida, January 2016-2017**



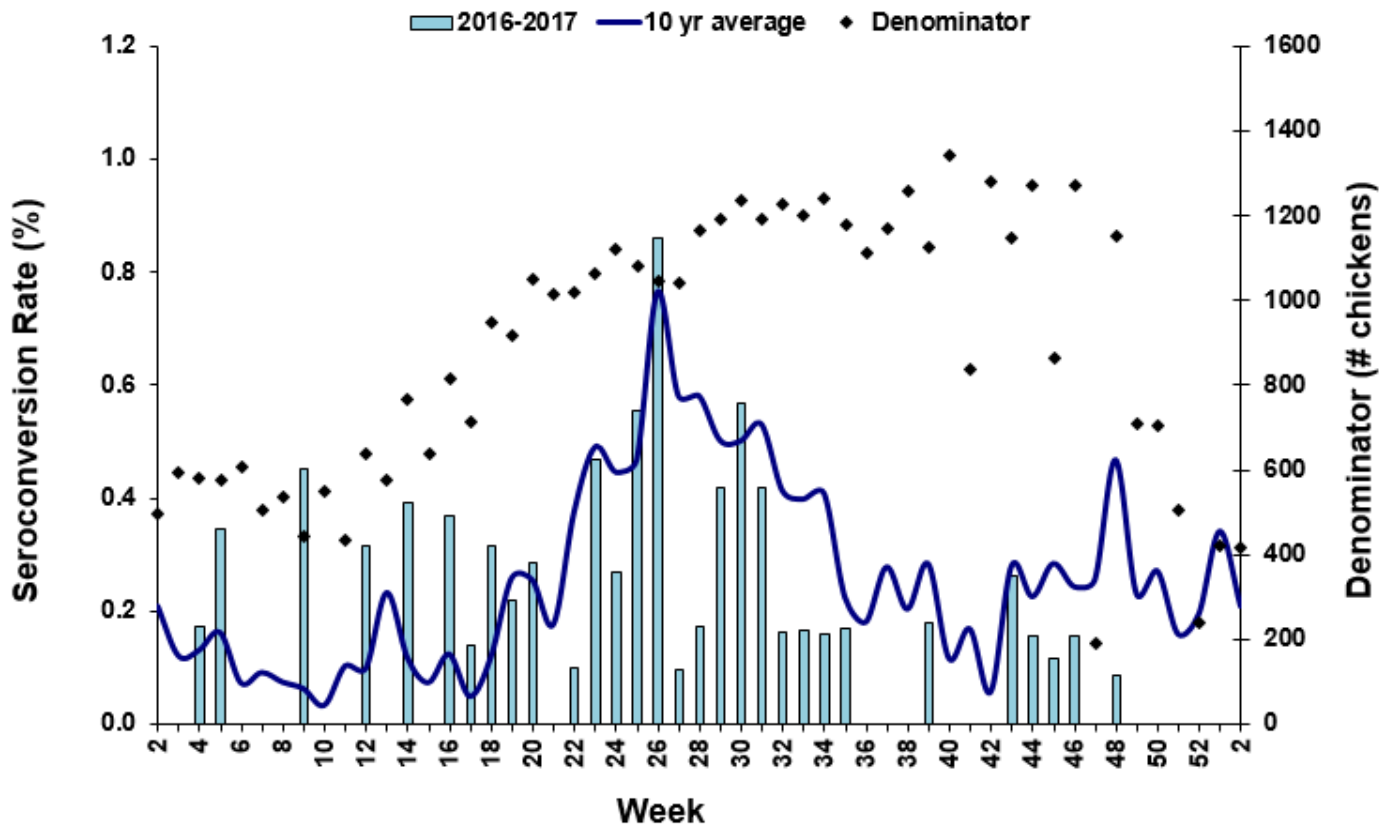
## Sentinel Chickens\*

The table below is for the reporting of confirmatory laboratory results from this week. Some of the samples were collected at earlier dates. The date of collection is recorded for samples collected on that day along with the total number of positives and the corresponding seroconversion rate for the week the sample was collected.

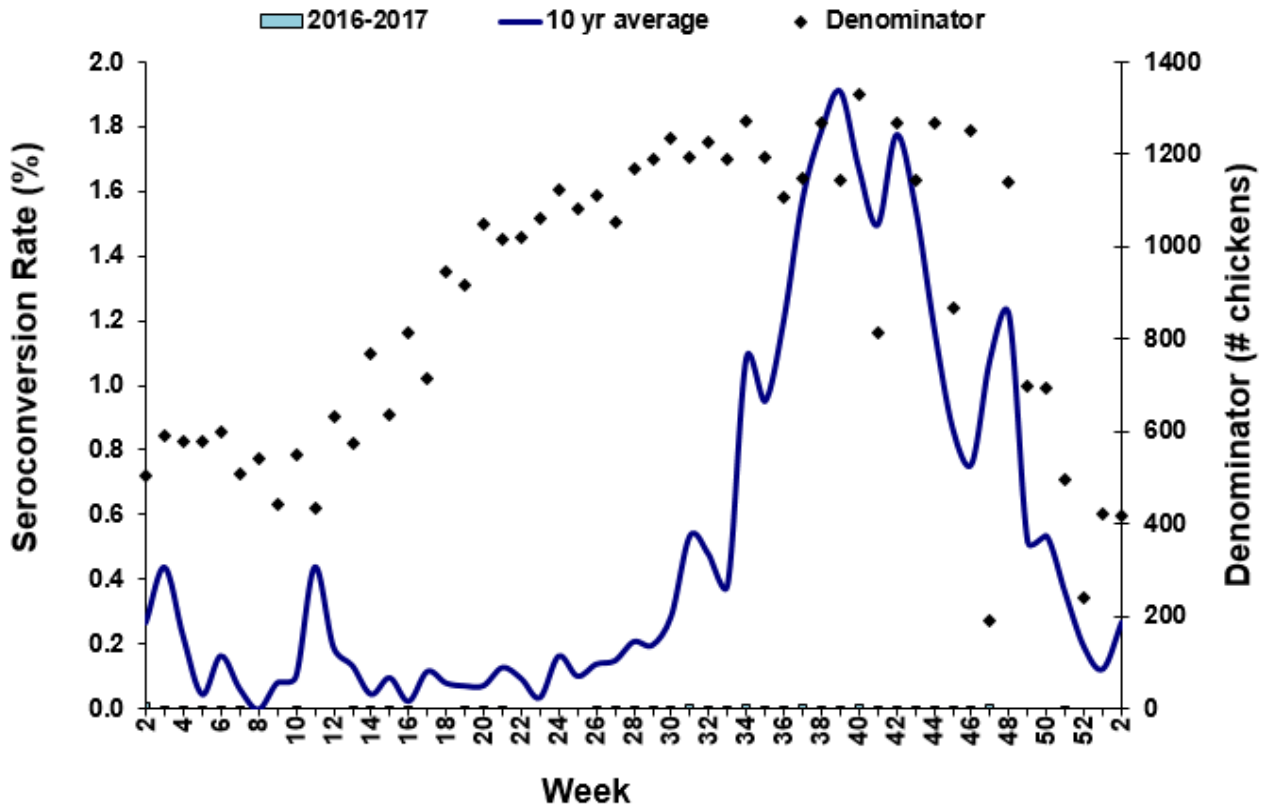
Two sentinel chickens tested positive for antibodies to WNV this week in Citrus County.

County	Collection Date	Seroconversion Rates (%)					County Totals		
		Flavi	SLEV	WNV	Alpha	EEEV	HJV	Collection Week	YTD
Citrus	12/19/16	2.82		2.82	12/19/16	2.82		2 WNV	9 EEEV, 2 HJV, 16 WNV 2.82

### Sentinel Seroconversions to EEEV in Florida, 2016-2017



## Sentinel Seroconversions to WNV in Florida, 2016-2017



### Mosquito Pools

No mosquito pools tested positive for EEEV, WNV, or Zika this week.

County	Collection Week	Result	Species	County YTD

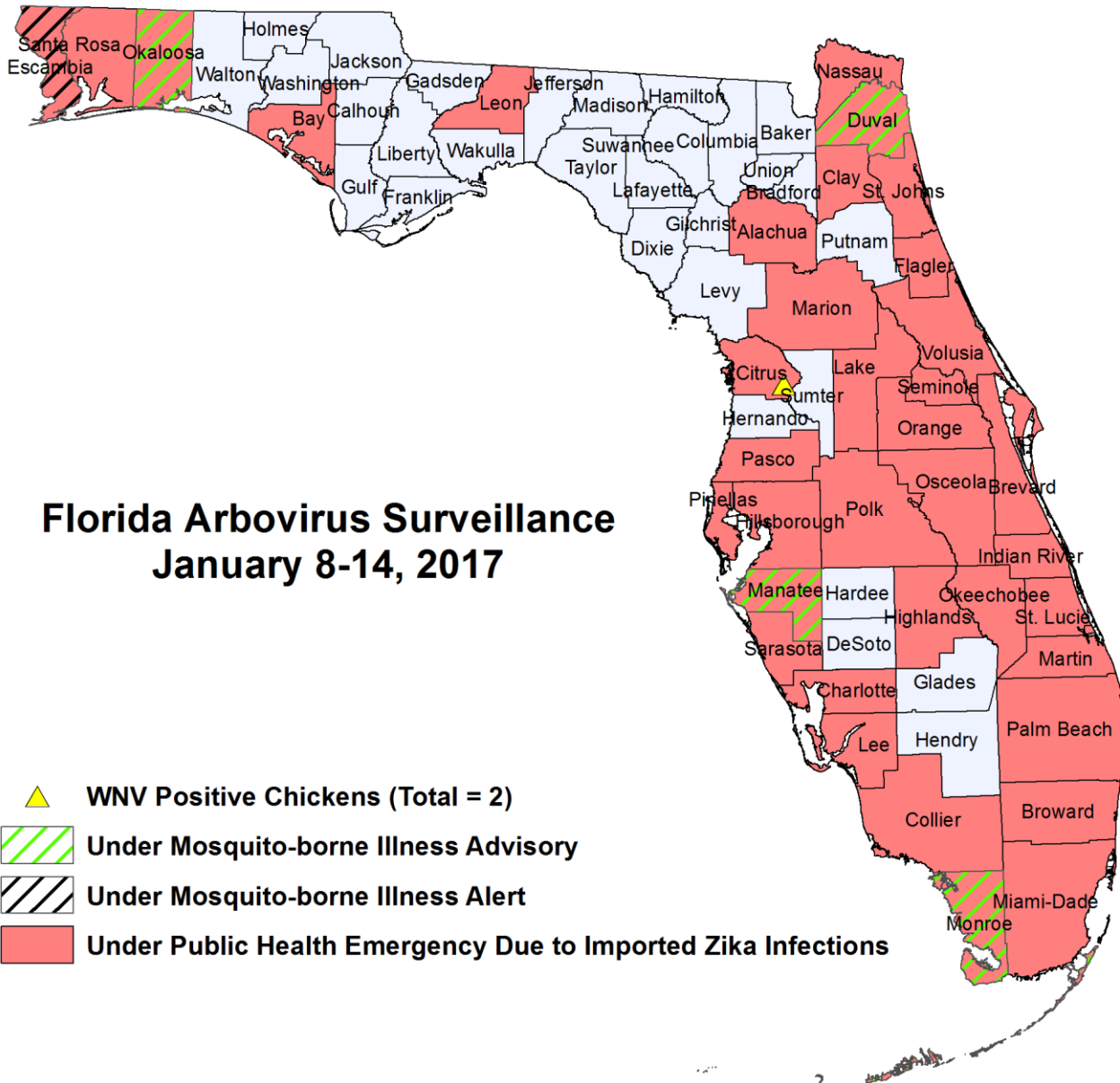
### Dead Birds

The Fish and Wildlife Conservation Commission (FWC) collects reports of dead birds, which can be an indication of arbovirus circulation in an area. This week, 10 reports representing a total of 11 dead birds including 2 raptors were received from 7 counties.





In 2017, 20 reports representing a total of 50 dead bird (0 crows, 0 jays, 6 raptors, and 0 doves) were received from 14 of Florida's 67 counties. Please note that FWC collects reports of birds that have died from a variety of causes, not only arboviruses. Dead birds should be reported to [www.myfwc.com/bird/](http://www.myfwc.com/bird/).

County	Total Dead Birds	Crows	Jays	Raptors	Dove
Brevard	1	0	0	0	0
Hillsborough	1	0	0	0	0
Pasco	1	0	0	1	0
Pinellas	5	0	0	0	0
Santa Rosa	1	0	0	0	0
Sarasota	1	0	0	0	0
Volusia	1	0	0	1	0

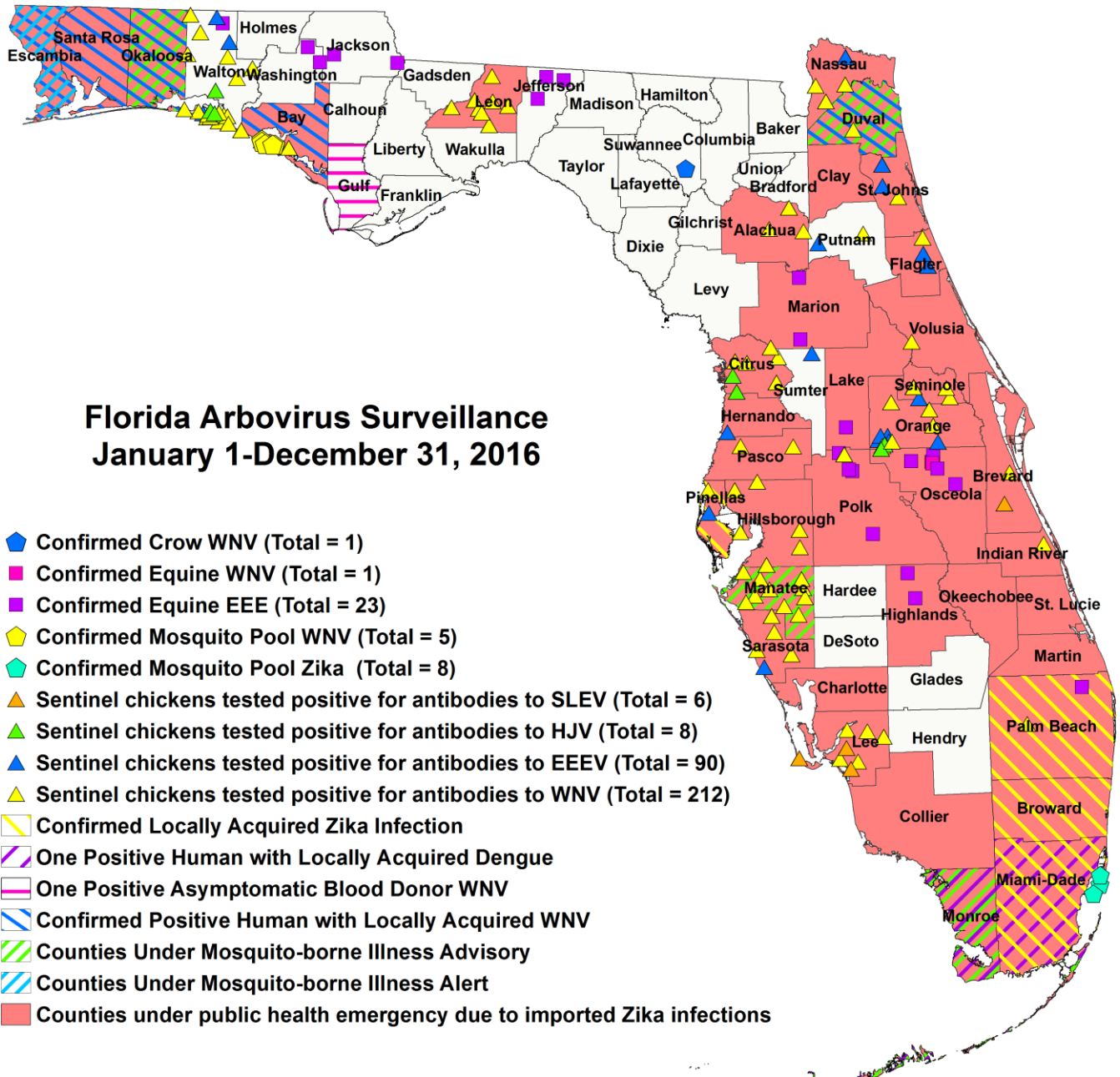
**Maps**



**Florida Arbovirus Surveillance  
January 8-14, 2017**

-  **WNV Positive Chickens (Total = 2)**
-  **Under Mosquito-borne Illness Advisory**
-  **Under Mosquito-borne Illness Alert**
-  **Under Public Health Emergency Due to Imported Zika Infections**





2016 Arbovirus Activity by County	
County	Arbovirus Activity
Alachua	EEEV: 3 sentinels (7/18, 8/8, 10/31) WNV: 3 sentinels (9/26, 10/4)
Bay	EEEV: 1 sentinel (4/18) WNV: 1 human (July); 5 mosquito pools (6/1, 7/6, 8/3); 29 sentinels (6/27, 7/5, 7/18, 7/25, 8/1, 8/8, 8/15, 8/22, 11/14)
Brevard	WNV: 1 sentinel (8/4) SLEV: 1 sentinel (9/14)
Broward	ZIKV: 5 humans (July, August, September, October)
Citrus	EEEV: 9 sentinels (1/4, 1/25, 2/29, 3/21, 5/31, 6/14, 8/2, 11/7, 11/14) HJV: 2 sentinels (2/1, 2/8) WNV: 16 sentinels (8/23, 10/3, 10/10, 10/18, 10/24, 11/1, 11/7, 11/14, 11/22, 12/19)
Duval	WNV: 1 human (August); 1 sentinel (10/17) ZIKV: 1 human (acquired in Miami-Dade, September)
Escambia	WNV: 2 humans (August)



<b>Flagler</b>	EEEV: 5 sentinels (5/2, 6/27, 7/18, 8/8) WNV: 1 sentinel (10/24)
<b>Gulf</b>	WNV: 1 asymptomatic blood donor (October)
<b>Hernando</b>	EEEV: 1 sentinel (11/28)
<b>Hillsborough</b>	WNV: 15 sentinels (1/5, 1/12, 3/8, 4/20, 5/11, 5/24, 7/12, 8/3, 8/23, 10/18, 11/8)
<b>Highlands</b>	EEEV: 2 horses (7/18, 10/25)
<b>Indian River</b>	WNV: 1 sentinel (11/2)
<b>Jackson</b>	EEEV: 2 horses (7/6, 7/16)
<b>Jefferson</b>	EEEV: 3 horses (6/16, 6/24, 7/24)
<b>Lake</b>	EEEV: 1 horse (8/3)
<b>Lee</b>	WNV: 9 sentinels (1/26, 8/23, 9/5, 9/19, 10/3, 10/4, 10/10, 10/17, 10/18) SLEV: 5 sentinels (7/12, 8/23, 9/5, 10/3)
<b>Leon</b>	EEEV: 9 sentinels (7/11, 7/18, 8/1, 8/29, 9/26, 10/24) WNV: 21 sentinels (7/25, 8/1, 8/8, 8/22, 8/29, 9/12, 9/20, 9/26, 10/3, 10/10, 10/17)
<b>Manatee</b>	WNV: 17 sentinels (2/17, 7/26, 9/7, 9/14, 9/20, 9/27, 10/5, 10/12, 10/26, 11/2, 11/8, 11/16) EEEV: 1 sentinel (11/2)
<b>Marion</b>	EEEV: 1 horse (8/13)
<b>Miami-Dade</b>	ZIKV: 242 humans (July, August, September, October, November, December); 8 mosquito pools (8/22, 8/23, 9/4, 9/9, 9/20, 9/23, 10/5) Dengue: 1 human (September)
<b>Monroe</b>	Dengue: 1 human (May)
<b>Nassau</b>	EEEV: 7 sentinels (5/13, 5/20, 6/30, 7/21, 7/28, 8/4, 10/27) WNV: 4 sentinels (5/26, 9/1, 9/15, 9/22)
<b>Okaloosa</b>	WNV: 1 human (July)
<b>Orange</b>	WNV: 8 sentinels (1/11, 1/26, 2/1, 2/8, 5/17, 6/27, 11/16) EEEV: 11 sentinels (1/7, 2/4, 4/4, 4/25, 5/2, 5/17, 6/27, 10/27, 11/16) HJV: 3 sentinels (1/14, 1/21, 10/20)
<b>Osceola</b>	EEEV: 5 horses (5/6, 6/22, 7/10, 7/15, 10/9) WNV: 1 horse (6/22)
<b>Palm Beach</b>	EEEV: 1 horse (5/31) WNV: 1 sentinel (11/7) ZIKV: 8 humans (July, August, September, October)
<b>Pasco</b>	WNV: 2 sentinels (8/10, 9/28)
<b>Pinellas</b>	EEEV: 1 sentinel (7/25) ZIKV: 1 human (August) WNV: 1 sentinel (11/14)
<b>Polk</b>	EEEV: 4 horses (4/4, 5/10, 6/19, 6/25); 3 sentinels (6/21, 7/25) WNV: 1 sentinel (7/18)
<b>Putnam</b>	EEEV: 1 sentinel (7/19) WNV: 2 sentinels (9/14, 10/19)
<b>Santa Rosa</b>	WNV: 1 human (August)
<b>Sarasota</b>	WNV: 10 sentinels (1/11, 1/15, 1/19, 2/1, 3/7, 4/8, 8/29, 9/19, 10/10, 10/17) EEEV: 1 sentinel (4/8)
<b>Seminole</b>	WNV: 5 sentinels (2/2, 4/4, 4/11, 5/17, 10/3) EEEV: 1 sentinel (5/9)
<b>St. Johns</b>	EEEV: 10 sentinels (6/6, 6/13, 6/20, 6/27, 8/15, 8/22) WNV: 2 sentinels (9/19, 11/14)
<b>Sumter</b>	EEEV: 1 sentinel (9/27)
<b>Suwannee</b>	WNV: 1 crow (September)
<b>Volusia</b>	WNV: 1 sentinel (10/17)
<b>Walton</b>	EEEV: 1 horse (6/17); 25 sentinels (1/4, 2/2, 2/29, 3/21, 4/4, 4/19, 5/2, 6/7, 6/20, 6/22, 6/27, 7/5, 7/13, 7/25, 7/27, 8/1, 8/22) WNV: 62 sentinels (1/11, 1/19, 2/2, 3/7, 3/29, 5/25, 8/1, 8/3, 8/8, 8/15, 8/22, 8/24, 8/29, 9/6, 9/14, 9/22, 9/26, 10/3, 10/5, 10/17, 10/19, 10/26, 10/31, 11/7) HJV: 3 sentinels (1/26, 4/25, 8/29)
<b>Washington</b>	EEEV: 2 horses (6/23, 7/9)

## Acknowledgements and Data Sources

Contributors: Andrea Bingham, PhD, MSPH, Shaiasia Itwaru-Womack, MPH, and Danielle Stanek, DVM, DOH Bureau of Epidemiology; Lea Heberlein-Larson, Lylah Seaton, and Valerie Mock, DOH Bureau of Public Health Laboratories; Carina Blackmore, DVM, PhD, DOH Division of Disease Control and Health Protection.

**For more surveillance information, please see the DOH website at:** <http://www.floridahealth.gov/diseases-and-conditions/mosquito-borne-diseases/surveillance.html>

**For arbovirus surveillance information for the United States, please see the Centers for Disease Control and Prevention website at:** <http://www.cdc.gov/ncidod/dvbid/westnile/surv&control.htm>

\*\*Case tallies included in the weekly Florida arbovirus surveillance report include confirmed and probable cases for EEE, WNV infection, SLE, dengue, chikungunya, and malaria by date of onset. Suspect cases are not included. Activity is mapped by county of exposure rather than county of residence. Case definitions being used in Florida are consistent with national criteria provided by the Council of State and Territorial Epidemiologists (CSTE) and may be viewed at: <http://www.floridahealth.gov/diseases-and-conditions/disease-reporting-and-management/disease-reporting-and-surveillance/index.html>. Case tallies reported by CDC do not include suspect cases and cases are reported by patient state of residence rather than where the exposure occurred. Data is provided by county health departments, Department of Health Bureau of Public Health Laboratories, Department of Agriculture and Consumer Services, mosquito control agencies, Florida Fish and Wildlife Conservation Commission, medical providers and veterinarians. Equine cases are provided by the Department of Agriculture and Consumer Services.