



## Week 42: October 14 – 20, 2012



### Summary

The Florida Department of Health (FDOH) monitors multiple surveillance systems such as the Electronic Surveillance System for the Early Notification of Community-based Epidemics (ESSENCE-FL), the Florida Pneumonia and Influenza Mortality Surveillance System (FPIMSS), notifiable disease reports (Merlin), EpiCom, and Florida ILINet in order to track influenza activity in the state.

#### National:

- In 2012, 307 people in 11 states have been infected with a variant strain of influenza A H3N2, also known as H3N2v. The H3N2v strain originates from influenza that circulates in pigs. Nearly all persons infected with H3N2v have reported direct or indirect contact with swine. Most cases have occurred in children; one death has been reported in an adult with underlying health conditions. **No cases of H3N2v infection have been reported in Florida.** More information can be found at: <http://www.cdc.gov/flu/swineflu/influenza-variant-viruses-h3n2v.htm>

#### State:

- After experiencing elevated influenza-like illness (ILI) levels statewide during the summer months, ESSENCE-FL emergency department ILI levels in some regions are above expected levels for this time of year. The most elevated levels in ESSENCE-FL ILI have been seen in Regions 2, 3 and 5. Six counties report moderate influenza activity in week 42. Lee County reported one influenza B outbreak in an elementary school into EpiCom in week 42.
- In week 42, twelve specimens tested PCR positive for Influenza B and four tested PCR positive for influenza A unspecified at the state public health laboratory. In recent weeks, influenza B has been the most common influenza subtype identified by the state public health laboratory. RSV activity is elevated above previous years at this time although recent increases are in keeping with seasonal trends.

#### Weekly state influenza activity: Sporadic

Florida is currently reporting Sporadic influenza activity statewide, due to low activity levels in all regions of Florida as shown in our influenza surveillance systems. This activity level represents the statewide spread of influenza, and is not a measure of flu intensity. The weekly state influenza activity level is a measure of the geographic spread of influenza across Florida, and not of influenza morbidity or mortality.

#### Pediatric Influenza-Associated Mortality

No influenza-associated pediatric deaths have so far been reported in the 2012-2013 influenza season. Pediatric influenza-associated deaths among those less than 18 years old are reportable in Florida.

TABLE 1: Summary of Florida Influenza-Like Illness (ILI) Activity for Week 42

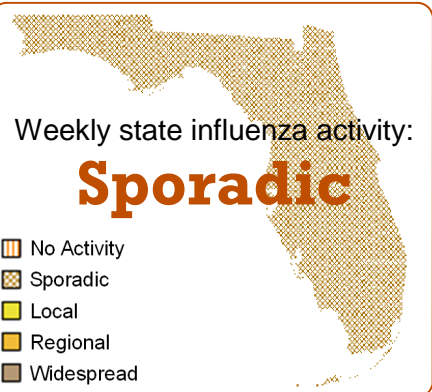
| Measure   | Difference from previous week | Current week 42 | Previous week 41 | Page of Report |
|---|-------------------------------|-----------------|------------------|----------------|
| Overall statewide activity code reported to CDC                     | No Change                     | Sporadic        | Sporadic         | 1              |
| Percent of visits to ILINet providers for ILI                       | ▲ 0.2                         | 1.7%            | 1.5%             | 2              |
| Percent of emergency department visits (from ESSENCE-FL) due to ILI | ▲ 0.1                         | 2.3%            | 2.2%             | 3              |
| Percent of laboratory specimens that were positive for influenza    | ▼ 0.9                         | 38.1%           | 39.0%            | 5              |
| Number of counties reporting moderate influenza activity            | ▲ 3                           | 6               | 3                | 6              |
| Number of counties reporting widespread influenza activity          | No Change                     | 0               | 0                | 6              |
| Number of counties reporting increasing influenza activity          | ▲ 3                           | 17              | 14               | 7              |
| Number of counties reporting decreasing influenza activity          | ▼ 3                           | 2               | 5                | 7              |
| Number of ILI outbreaks reported in EpiCom                          | ▲ 1                           | 1               | 0                | 10             |

October 24, 2012

Posted on the Bureau of Epidemiology website: <http://www.doh.state.fl.us/floridaflu/>

Produced by: Bureau of Epidemiology, Florida Department of Health (FDOH)

Contributors: Heather Rubino, MS; Colin Malone, MPH; Laura Coleman, BS; Aaron Chern, MS; Leah Eisenstein, MPH; Lea Heberlein-Larson, BS, MPH, SM(ASCP); Valerie Mock; Janet Hamilton, MPH



#### In this Issue:

|   |    |
|---|----|
| Summary   | 1  |
| Outpatient Influenza-like Illness Surveillance Network (ILINET)-Statewide | 2  |
| ESSENCE-FL Syndromic Surveillance 3 Summary-Statewide                     | 3  |
| ESSENCE-FL Syndromic Surveillance 4 Summary-Regional                      | 4  |
| Florida Bureau of Public Health Laboratories Viral Surveillance           | 5  |
| County Influenza Activity   | 6  |
| ESSENCE Pneumonia and Influenza Mortality Data                            | 9  |
| NREVSS Respiratory Virus Surveillance                                     | 10 |
| Influenza and ILI outbreaks reported in EpiCom                            | 10 |
| Pediatric Influenza-Associated Mortality                                  | 10 |

ILINet is a nationwide surveillance system composed of sentinel providers. Florida has 110 providers enrolled in ILINet who submit weekly ILI and total visit counts, as well as submitting ILI specimens to the BOL for confirmatory testing. For this season, BOE has designated 16 of these ILINet physicians' offices as Super-Sentinels. These Super-Sentinels will receive more active follow-up from BOE and participating county health departments, with the goal of increasing data quality and surveillance specimen submission. Complete lab and visit data from Florida ILINet Super-Sentinels will be presented in the Florida Flu Review in future weeks.

**FIGURE 1** shows the percentage of visits for ILI\* reported by ILINet Sentinel Providers statewide.

ILI percent positive remains low and similar to other non-pandemic seasons at this time.

65 of 110 ILINet Sentinels have reported visit counts as of 11:45 a.m., October 24, 2012.

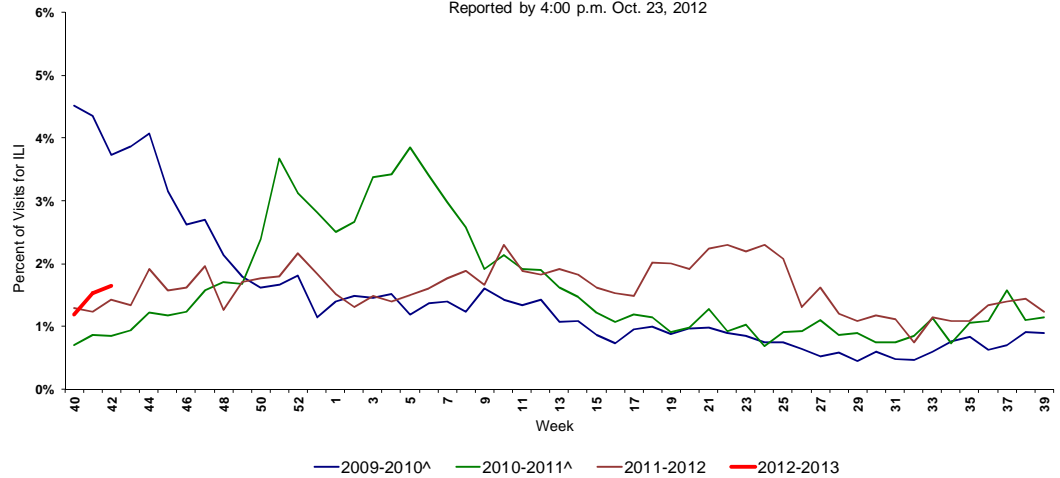
13 of 15 ILINet Super-Sentinels have reported visit counts as of 11:45 a.m., October 24, 2012.

**Note:** In response to several states' identifying recent infections due to H3N2v, FDOH is enhancing virologic surveillance. ILI Sentinels have been advised to submit more specimens to BPHL from children under age 18. BPHL is able to detect presumptive positives for both seasonal and novel influenza viruses through routine testing. **No cases of variant H3N2 influenza A have been reported in Florida.** Detailed guidance documents have been sent to sentinel sites and county health departments.

**FIGURE 2** shows ILI visit counts reported by ILINet sentinel providers statewide by age group.

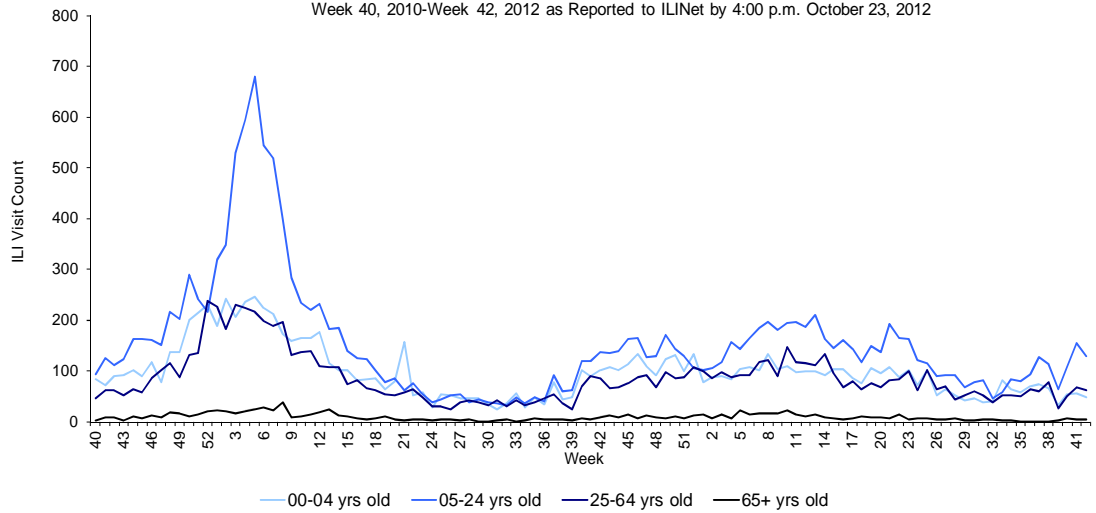
ILI visit counts are decreasing in the 0-54 age group in week 42.

FIGURE 1: Percentage of Visits for Influenza-Like Illness (ILI)\* Reported by ILINet Sentinel Providers Statewide, 2009-2010 (Weeks 40-39), 2010-2011 (Weeks 40-39), 2011-2012 (Weeks 40-39), and 2012-2013 (Week 40-42) Reported by 4:00 p.m. Oct. 23, 2012



\*ILI = Influenza-like illness, fever >100°F AND sore throat and/or cough *in the absence* of another known cause.  
 ^There is no week 53 during the 2009-2010, 2010-2011, and 2011-12 seasons; the week 53 data point for those seasons is an average of weeks 52 and 1.

FIGURE 2: Influenza-like Illness (ILI) Visit Counts Reported by ILINet Sentinel Providers Statewide by Age Group Week 40, 2010-Week 42, 2012 as Reported to ILINet by 4:00 p.m. October 23, 2012



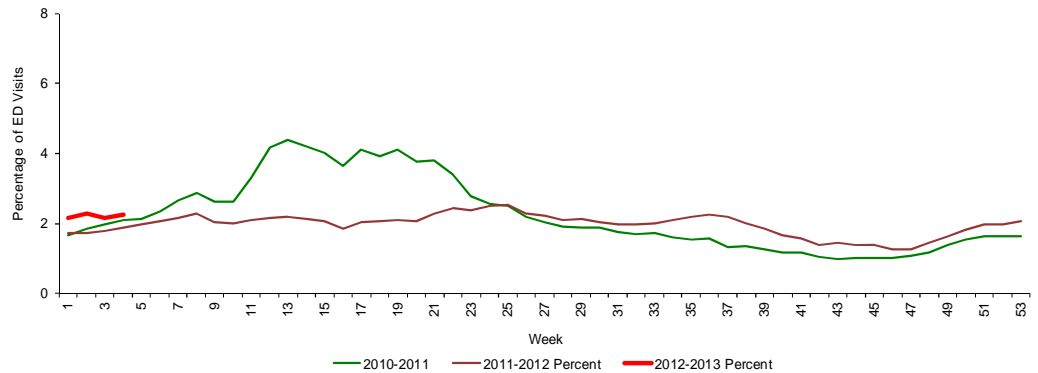
†Data presented here are counts, not proportions as included in Figure 2. This is because age group denominator data is not available through ILINet.

Florida uses ESSENCE-FL for syndromic surveillance, which currently collects data daily from 174 hospital emergency departments (ED). These data are processed into 11 different syndrome categories based on the patient's chief complaint. One of the categories is ILI, which is composed of chief complaints that include the words "influenza" or "flu," or complaints that contain fever plus cough and/or sore throat.

**FIGURE 3** shows ESSENCE-FL data on ILI visits to EDs as a percentage of all ED Visits.

Overall activity for influenza-like illness reported in ESSENCE-FL is at slightly higher levels than seen in previous non-pandemic seasons at this time.

FIGURE 3: Influenza-Like Illness Visits (by Chief Complaint) to Emergency Departments (ED) as a Percentage of All ED Visits, ESSENCE-FL Participating Hospitals (N=174), Week 40, 2010 through October 23, 2012

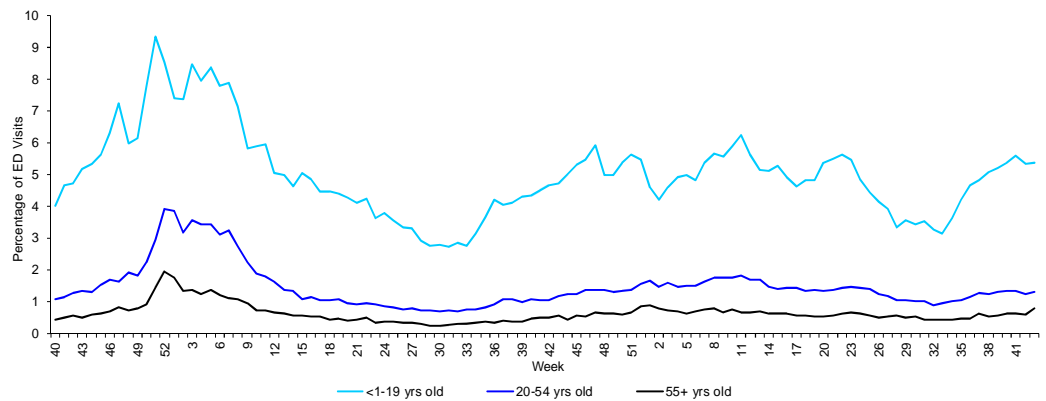


\*There is no week 53 for the 2007-2008, 2009-2010, and 2010-2011 seasons; the week 53 data point for those seasons is an average of weeks 52 and 1.

**FIGURE 4** shows percentage of ILI among all ED visits by age group.

Age-specific trends show that percent ILI in the 0-55+ age group is increasing for week 42.

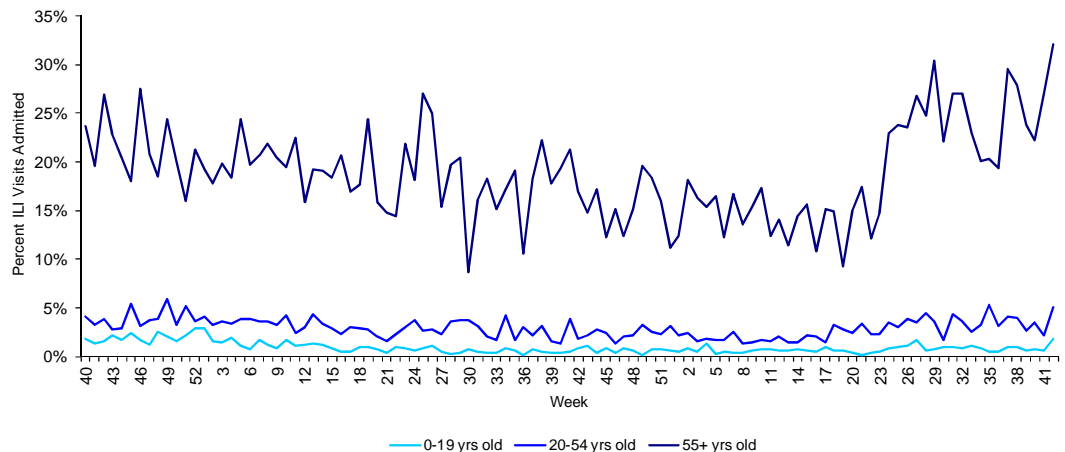
FIGURE 4: Percentage of Influenza-Like Illness from Emergency Department (ED) Chief Complaints by Age, ESSENCE-FL Participating Hospitals (N=174), Week 40, 2010 through October 23, 2012



One hundred five ESSENCE-FL participating facilities are able to provide discharge disposition data for their ED visits going back to week 40, 2010. Using this information, the percent of ED visits for ILI that result in hospitalization can be calculated. The highest percentage of admissions is in the 55+ years old age group. The low number of visits in the 55+ age group causes variability in the ILI admission percentage from week to week.

**FIGURE 5** shows the percentage of ED visits for ILI that resulted in hospitalization, by age group.

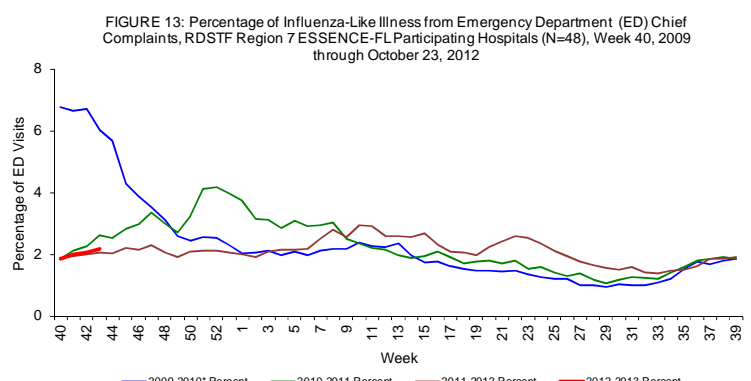
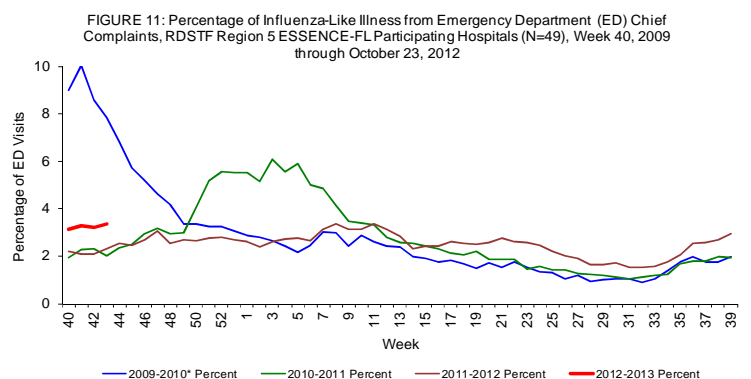
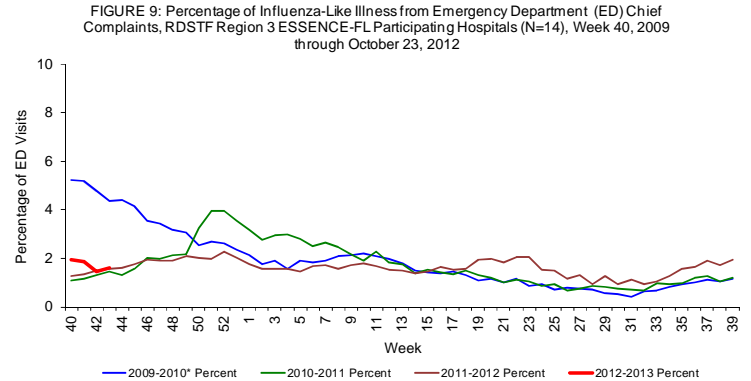
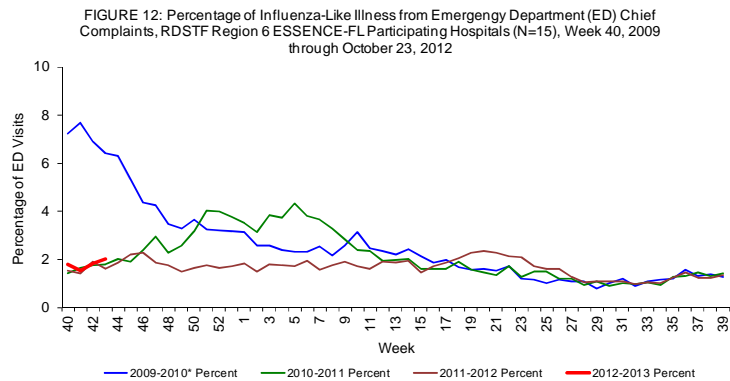
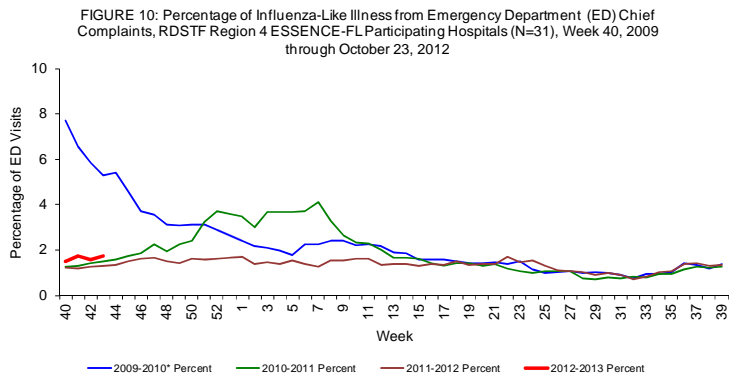
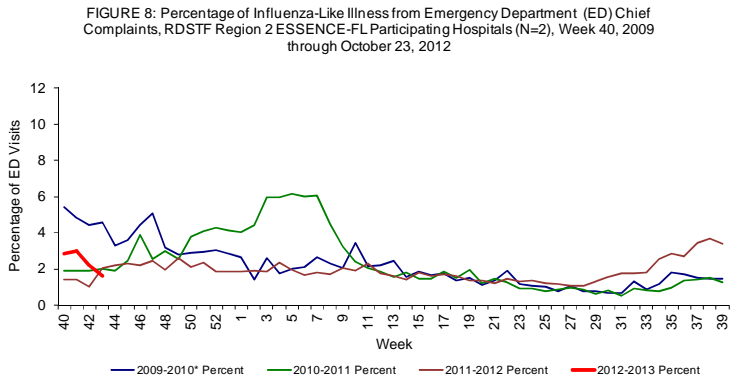
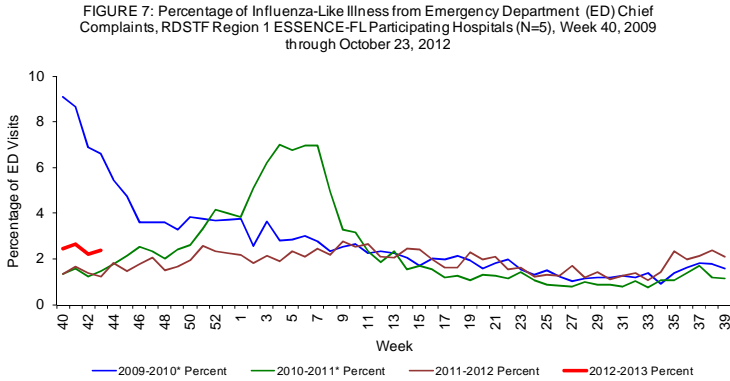
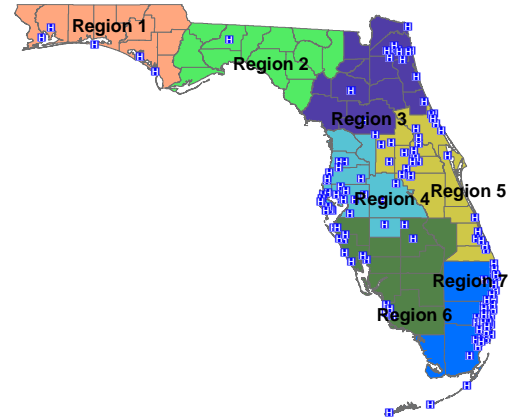
FIGURE 6: Percentage of ED Visits for ILI Resulting in Hospital Admission, Hospitals Reporting Discharge Disposition (N=105), Week 40, 2010 to Week 42, 2012



**FIGURE 6 - FIGURE 12** describe ED chief complaint data from ESSENCE-FL by Regional Domestic Security Task Force (RDSTF).

ILI activity in ESSENCE-FL is elevated in Regions 1, and 5. ILI levels in all other regions are at or below levels seen in previous non-pandemic seasons at this time.

Map 1: Hospitals Reporting Emergency Department (ED) Data to ESSENCE-FL, October 24, 2012 (N=174)



**TABLE 2** shows the number of specimens tested by the BPHL, how many are influenza positive, and how many are H1N1 or other influenza subtypes.

**FIGURE 14 - FIGURE 15** use BPHL viral surveillance data to track the progress of influenza infection over time. They include weekly information on how many specimens are tested by the BPHL, what proportion of those test positive for influenza, and what subtypes are found for the positive influenza specimens.

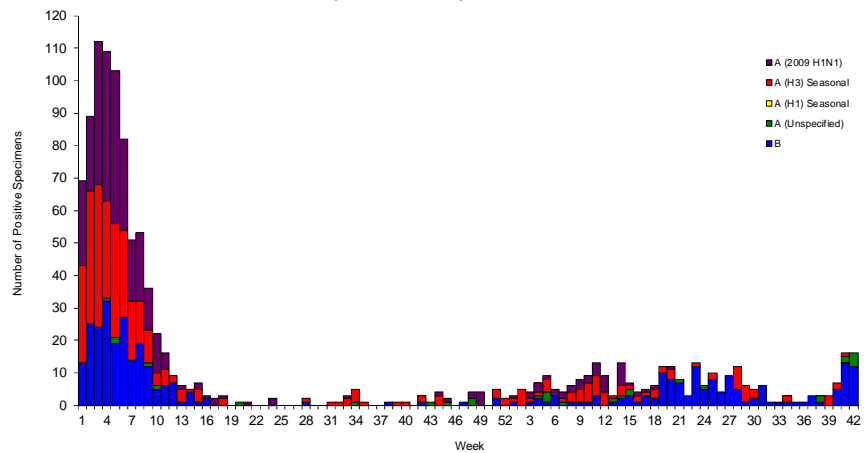
**Small numbers of influenza specimens submitted to BPHL tested positive for influenza A H3, 2009 H1N1, and influenza B.**

Influenza B has been the most common strain detected by BPHL in recent weeks.

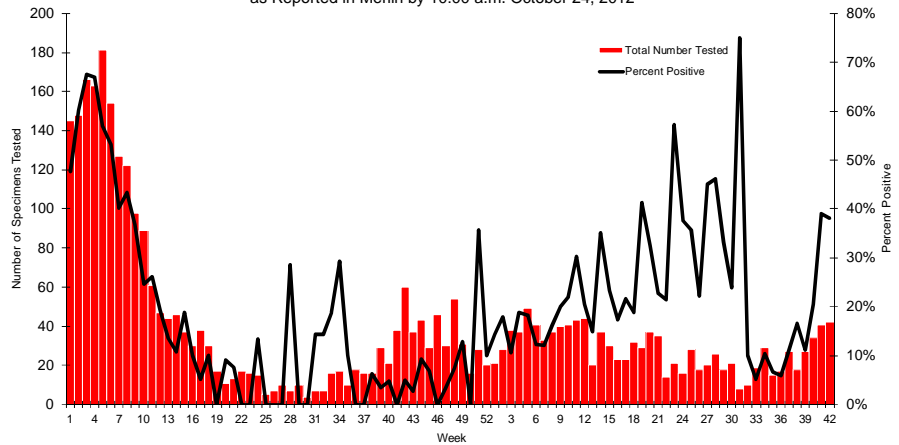
**Table 2: Bureau of Public Health Laboratories (BPHL) Viral Surveillance for Week 42 by Lab Event Date\* as reported by 10:30 a.m. October 24, 2012**

|  | Current Week 42 | Previous Week 41 |
|--|-----------------|------------------|
| <b>Total Specimens Tested</b>                      | <b>42</b>       | <b>41</b>        |
| Influenza Positive Specimens (% of total)          | 16 (38.1%)      | 16 (39.0%)       |
| H1N1 Positive Specimens (% of influenza positives) | -               | -                |
| H3 Influenza A                                     | -               | 1 (6.3 %)        |
| Influenza A Unspecified                            | 4 (25.0 %)      | 2 (12.5 %)       |
| Influenza B Unspecified                            | 12 (75.0 %)     | 13 (81.2 %)      |

**FIGURE 14: Number of Influenza-Positive Specimens Tested by the Florida Bureau of Public Health Laboratories (BPHL) by Subtype by Lab Event Date\* Week 1, 2011 to Week 42, 2012 as Reported in Merlin by 10:00 a.m. October 24, 2012**



**FIGURE 15: Number of Specimens Tested by Florida Bureau of Public Health Laboratories (BPHL) and Percent Positive for Influenza by Lab Event Date\* Week 1, 2011 to Week 42, 2012 as Reported in Merlin by 10:00 a.m. October 24, 2012**



\*Please note that lab event date is defined as the earliest of the following dates associated with the lab: date collected, date received by the laboratory, date reported, or date inserted.

For county-specific laboratory data, please refer to the Flu Lab Report in Merlin.

For instructions on how to use the Flu Lab Report, please see the Guide to Flu Lab Report on the Bureau of Epidemiology website: [http://www.doh.state.fl.us/disease\\_ctrl/epi/htopics/flu/FluLabReportGuide.pdf](http://www.doh.state.fl.us/disease_ctrl/epi/htopics/flu/FluLabReportGuide.pdf)

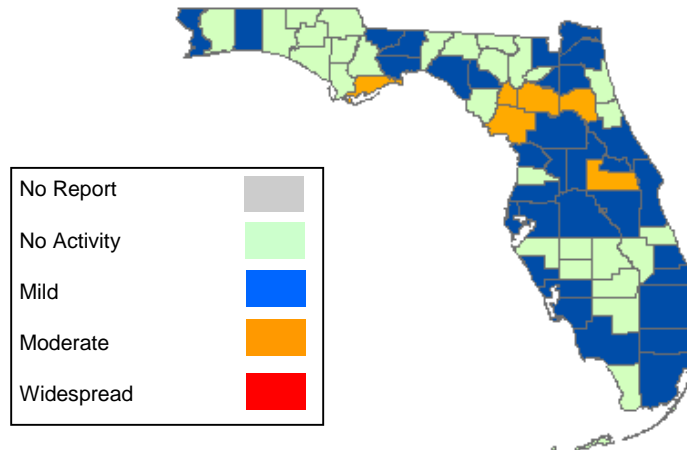
As of 10:30 a.m. October 24, 2012 a total of 67 (100%) counties had reported their weekly level of influenza activity. *Please note that data reported by counties after the deadline Tuesday at 5 p.m. are recorded but may not be included in the activity map for previous weeks.*

**TABLE 3: Weekly County Influenza Activity for Week 42 (ending October 20, 2012) as Reported by 10:30 a.m. October 24, 2012**

| Activity Level | Week 41 Number of Counties | Week 42 Number of Counties | Week 42 Counties   |
|----------------|----------------------------|----------------------------|--|
| No Report      | -                          | -                          |  |
| No Activity    | 35                         | 28                         | Bay, Calhoun, Columbia, Desoto, Dixie, Flagler, Glades, Gulf, Hamilton, Hardee, Hendry, Hernando, Highlands, Holmes, Indian River, Jackson, Jefferson, Liberty, Madison, Manatee, Monroe, Okeechobee, Santa Rosa, St. Johns, Suwannee, Union, Walton, Washington                             |
| Mild           | 29                         | 33                         | Baker, Bradford, Brevard, Broward, Charlotte, Citrus, Clay, Collier, Dade, Duval, Escambia, Gadsden, Hillsborough, Lafayette, Lake, Lee, Leon, Marion, Martin, Nassau, Okaloosa, Osceola, Palm Beach, Pasco, Pinellas, Polk, Sarasota, Seminole, St. Lucie, Sumter, Taylor, Volusia, Wakulla |
| Moderate       | 3                          | 6                          | Alachua, Franklin, Gilchrist, Levy, Orange, Putnam   |
| Widespread     | -                          | -                          | -  |

**Map 2: Weekly County Influenza Activity for Week 42 as Reported by 10:30 a.m. October 24, 2012**

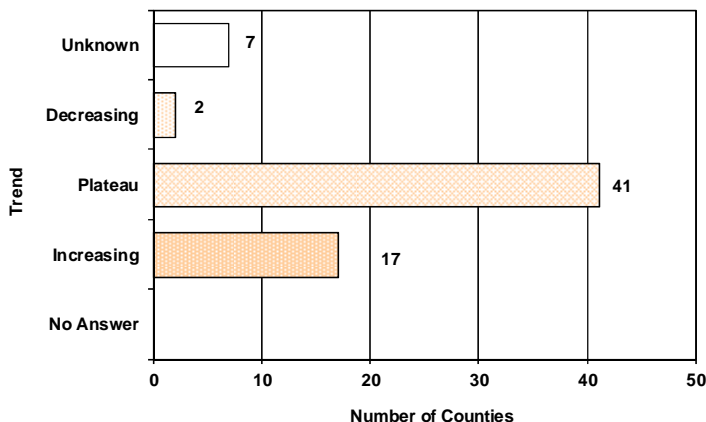
Most counties report no or mild activity. Six counties report moderate activity.



County influenza activity data is reported to the Bureau of Epidemiology through EpiGateway on a weekly basis by the county influenza coordinator. Specific information is requested about laboratory results, outbreak reports, and surveillance system activity. Figures 16-25 displayed below reflect a county's assessment of influenza activity within their county as a whole as well as influenza activity within specific settings. For week 42, two counties indicated that activity was decreasing, 41 indicated it was about the same as previous weeks, and seventeen indicated that activity was increasing.

**FIGURE 16** shows the assessment of the overall influenza activity trend in each county as reported by county health department flu coordinators for week 42 as of 10:30 a.m. October 24, 2012.

**FIGURE 16: Assessment of Overall Influenza Activity Trend**



Definitions for the County Influenza Activity Trends are available at: [http://www.doh.state.fl.us/disease\\_ctrl/epi/CountyInfluenzaTrendGuide.html](http://www.doh.state.fl.us/disease_ctrl/epi/CountyInfluenzaTrendGuide.html)

Counties are asked to evaluate influenza activity in certain settings within their county. Each setting has a scale for activity that ranges from none or minimal activity to very high activity. What defines each of the values varies by facility type, but the example of the assessment in elementary, middle, and high schools is included below. More detailed information on the meanings of the levels for each setting can be found on the webpage also included below.

No or very minimal activity -- Scattered cases of ILI with no increase in absenteeism or disruption of school activities.

Moderate activity -- Absenteeism elevated above baseline (in range of 10 to 25%) in some but fewer than half of schools where it is known; occasional children sent home because of ILI.

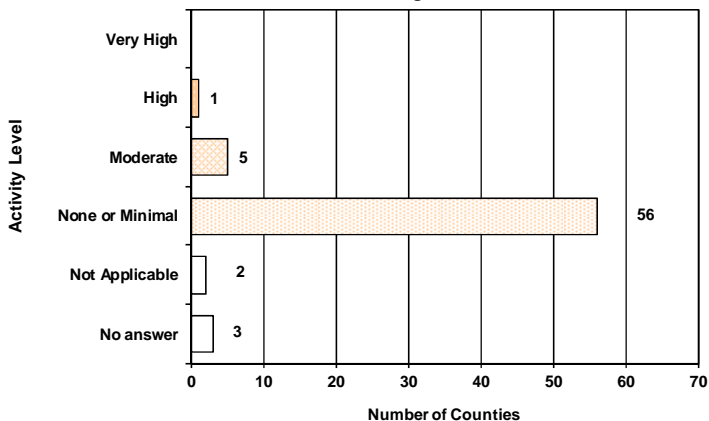
High activity -- Absenteeism elevated above baseline (in range of 10 to 25%) in more than half of schools; most schools sending several or many children home each day because of ILI.

Very high activity -- Absenteeism high enough to force curtailment of some or all school activities.

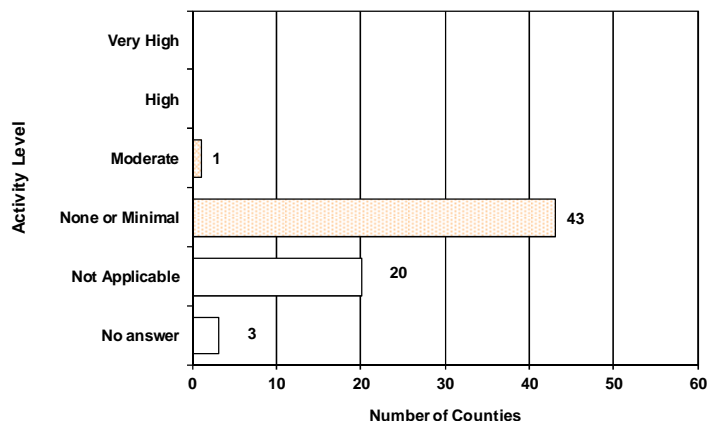
County influenza settings assessment guides are available at: [http://www.doh.state.fl.us/disease\\_ctrl/epi/FluAssessment.htm](http://www.doh.state.fl.us/disease_ctrl/epi/FluAssessment.htm)

**FIGURE 17 - FIGURE 18** show the activity levels in various facilities by county as reported by county health department flu coordinators for week 42 as of 10:30 a.m. October 24, 2012.

**FIGURE 17: Assessment of Influenza Activity in Elementary, Middle, and High Schools**

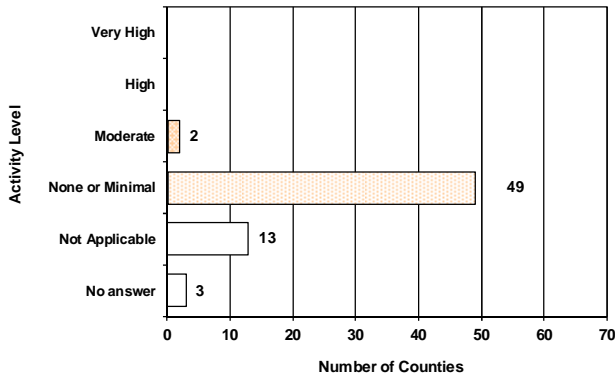


**FIGURE 18: Assessment of Influenza Activity in Colleges and Universities**

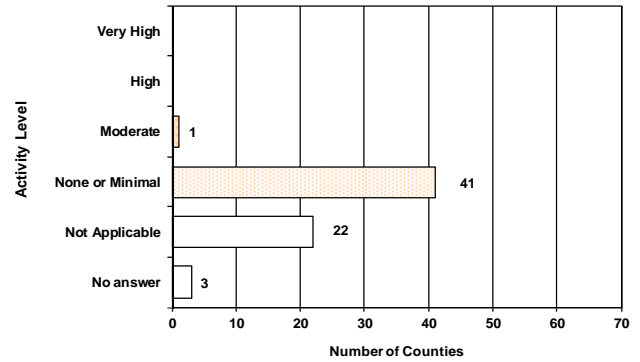


**FIGURE 19 - FIGURE 25** show the activity levels in various facilities by county as reported by county health department flu coordinators for week 42 as of 10:30 a.m. October 24, 2012.

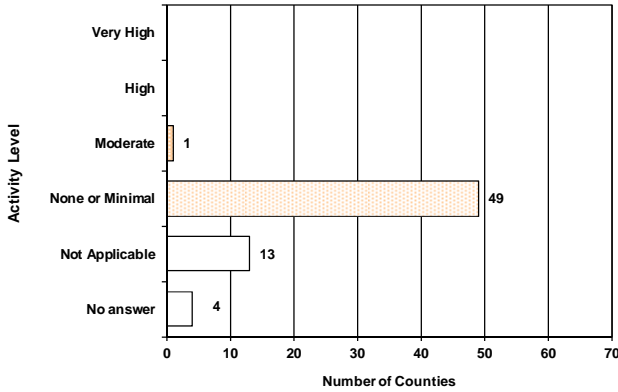
**FIGURE 19: Assessment of Influenza Activity in Jails/Prisons**



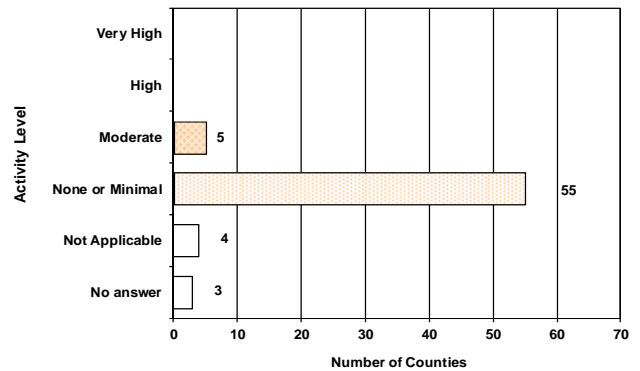
**FIGURE 20: Assessment of Influenza Activity in Retirement Facilities**



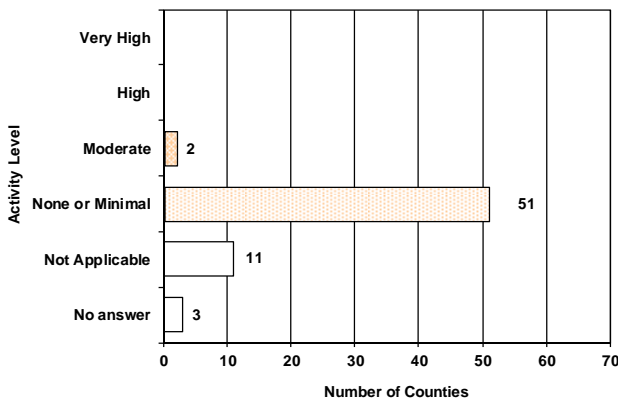
**FIGURE 21: Assessment of Influenza Activity in Nursing Homes**



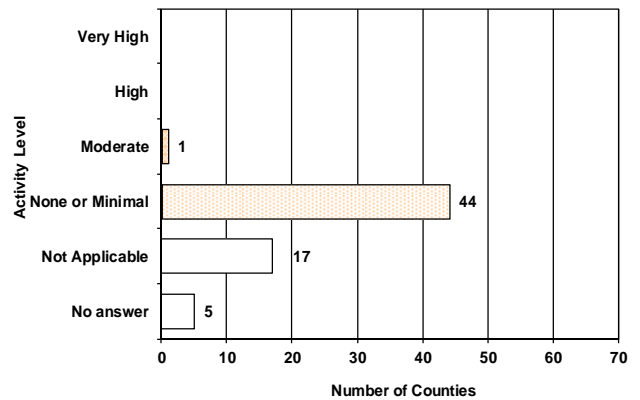
**FIGURE 22: Assessment of Influenza Activity in Health Care Facilities**



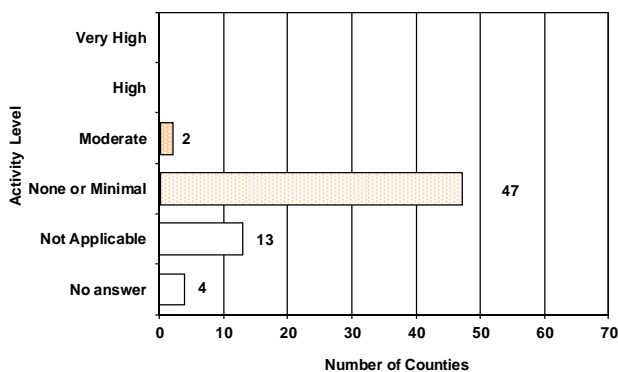
**FIGURE 23: Assessment of Influenza Activity in Daycare Centers**



**FIGURE 24: Assessment of Influenza Activity in Businesses**



**FIGURE 25: Assessment of Influenza Activity in State or Local Government Offices**





Because of less than 100% reporting in the Florida Pneumonia and Influenza Mortality Surveillance System in week 43, pneumonia and influenza (P&I) mortality data from ESSENCE-FL are used in this report. Over the past year, the FDOH Bureau of Vital Statistics and County Health Departments have been rolling out an electronic death record system for Florida. ESSENCE-FL now displays electronic death record data from all 67 Florida counties. For P&I surveillance, death record literals are queried in ESSENCE-FL using a free-text query that searches for references to pneumonia and influenza on death certificates. Any mention of pneumonia or influenza in the death certificate literals, with certain exceptions, is counted as a P&I death. Numbers may change as more data are received. *The most recent data available are displayed here. ESSENCE-FL death records data are currently considered to be reliable through week 41, 2012.*

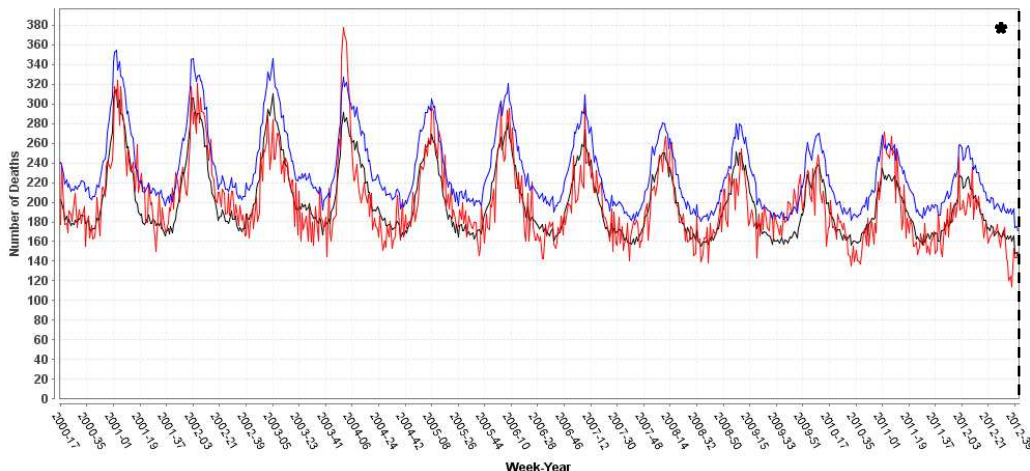
**FIGURE 26** shows the reported count of pneumonia and influenza deaths for all Florida counties, the number of deaths predicted using a multi-year, and the upper bound of the 95% confidence interval for this prediction

For week 41 (ending October 13, 2012) there were:

- **149 deaths reported**
- **Upper bound of 95% confidence interval for prediction: 171 deaths**
- **NO excess deaths**

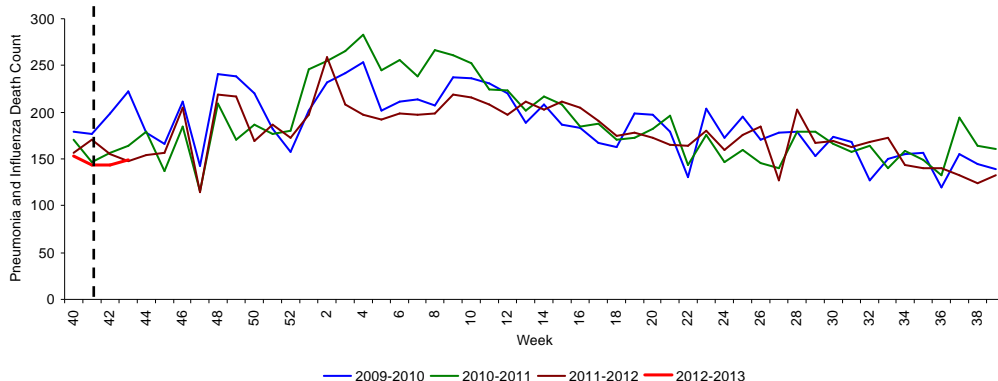
The majority of the deaths are in those aged 75 years and older.

Figure 26: Pneumonia and Influenza Deaths for all Florida Counties, Multi-Year Regression Model Week 1, 2009-Week 41, 2012, as reported into ESSENCE-FL



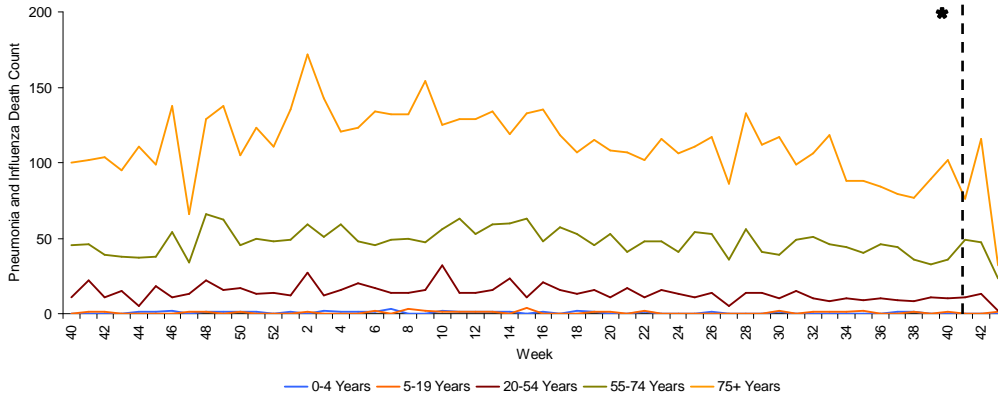
**FIGURE 27** shows Pneumonia and Influenza Deaths for all Florida Counties, Week 40, 2010 - Week 43, 2012, as reported into ESSENCE-FL

FIGURE 27: ESSENCE Florida Pneumonia and Influenza Deaths, Week 40, 2009-Week 43, 2012



**FIGURE 28** shows Pneumonia and Influenza Deaths for all Florida Counties by Age Group, Week 40, 2010 - Week 43, 2012, as reported into ESSENCE-FL

FIGURE 28: ESSENCE-FL Florida Pneumonia and Influenza Deaths by Age Group, Week 40, 2010-Week 43, 2012

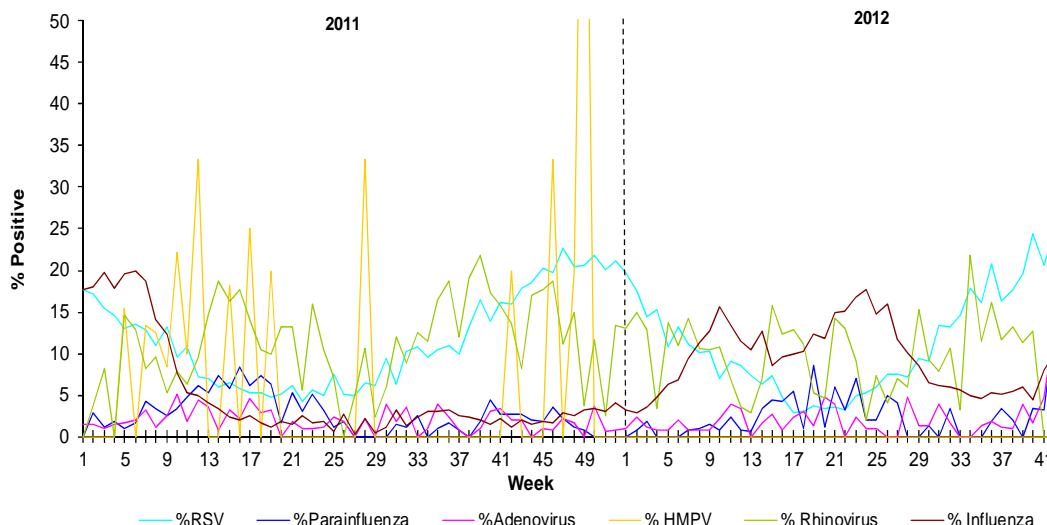


\* ESSENCE-FL death records data are currently considered to be reliable through week 41, 2012.

The National Respiratory and Enteric Virus Surveillance System (NREVSS) collects data from laboratories around the country on a weekly basis. NREVSS monitors temporal and geographic patterns of six common respiratory viruses. Seventeen facilities reported in week 42.

**FIGURE 29** shows the percentage of positive tests for multiple respiratory viruses reported by NREVSS-participating laboratories in Florida

FIGURE 29: Percentage of Positive Respiratory Virus Tests as Collected by NREVSS, Florida, 2010-2012, as of October 24, 2012



The 6 respiratory viruses summarized in Figure 1 are:

- Respiratory Syncytial Virus (RSV)
- Parainfluenza 1-3
- Adenovirus
- Human Metapneumovirus (HMPV)
- Rhinovirus
- Influenza

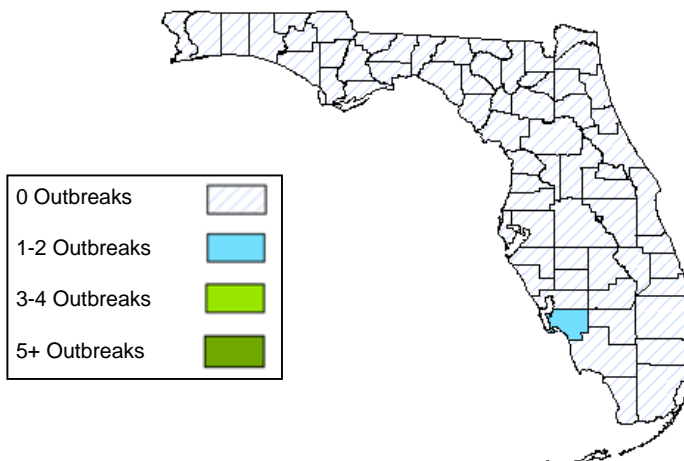
## Influenza and ILI Outbreaks

In week 42 there was one influenza or ILI outbreaks reported into EpiCom.

- Lee County: Twenty students at an elementary school had ILI. Eleven students tested positive for influenza B by rapid antigen test. Six of the children had not been vaccinated. This is the only Lee County ILI outbreak in the 2012-13 influenza season.

Map 3: Weekly County Influenza Outbreak Activity for Week 42 as Reported by 11:30 a.m. October 24, 2012

**One** influenza or ILI outbreak has been reported into EpiCom in the 2012-2013 season.



## Pediatric Influenza-Associated Mortality

In week 42 there were no influenza-associated pediatric deaths reported statewide.

**Zero** Influenza-associated pediatric deaths have been reported in Florida so far in the 2012-13 season.