

## Lab Locations

### Jacksonville Laboratory

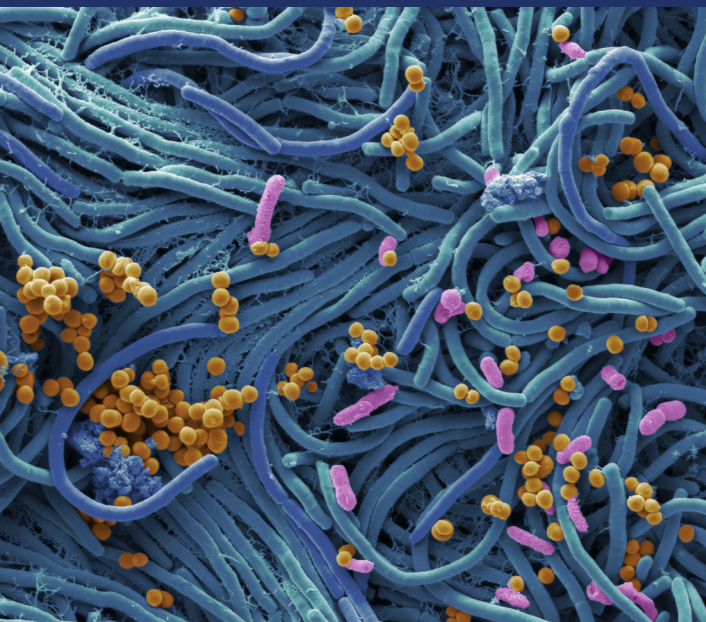
1217 North Pearl St.  
Jacksonville, FL 32202

### Miami Laboratory

1325 N.W. 14th Ave.  
Miami, FL 33125

### Tampa Laboratory

3602 Spectrum Blvd.  
Tampa, FL 33612



Contributing to a  
Healthier Florida  
One Test at a Time!

## Learn More

For additional information about the  
Bureau of Public Health Laboratories,  
scan the QR code:



or visit:

[FloridaPublicHealthLab.com](https://www.floridapublichealthlab.com)

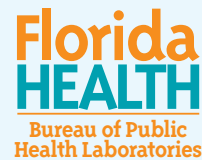
## Contact Us

Tallahassee Office  
**850-245-4232**

Jacksonville Lab  
**904-791-1500**

Miami Lab  
**305-324-2432**

Tampa Lab  
**813-233-2203**



7/6/23

DIVISION OF DISEASE CONTROL AND  
HEALTH PROTECTION

## Bureau of Public Health Laboratories



Florida  
HEALTH

## Who We Are

The Florida Department of Health's Bureau of Public Health Laboratories (BPHL) plays a critical role in protecting the health of Florida's citizens and visitors by performing tests that are not readily available in the commercial sector, including newborn screening, rabies, and specialized tuberculosis testing.

The laboratories are on the front line of public health responses using state-of-the-art technology to detect new and emerging infectious diseases and providing testing to support outbreak investigations and monitoring of anti-microbial resistance and disease trends.

The laboratory staff can test for biological and chemical threats 24/7.

In 2020 and 2021, the BPHL performed testing that produced more than **3.5 million test results**.



## What We Do

### Newborn Screening

Early detection is the primary objective of newborn screening in Florida. Shortly after birth, medical professionals screen for more than 50 disorders that may impact a child's development. These tests help to ensure babies can receive immediate and follow-up care.

### Molecular Testing

Uses state-of-the-art instrumentation to perform molecular nucleic acid testing and sequencing to support pathogen surveillance activities in Florida. The Molecular Department serves as the coordinator and primary laboratory for next-generation sequencing and bioinformatics in the state.

### Microbiology Testing

The clinical section performs bacteria and parasite identification, tracking of reportable organisms and identification, and testing of outbreak submissions and work/school exclusion cases. The environmental section performs bacterial testing on potable well water, non-potable water from beaches (recreational waters), Legionella environmental sources, and food outbreaks related to epidemiological investigations.

### Viral Testing

Provides diagnostic testing, confirmatory testing, surveillance testing and the internal surge capacity for molecular and serological (antibody) testing in outbreak and pandemic events. The laboratories perform tests for the detection of respiratory viruses, mosquito-transmitted viruses, foodborne viruses, emerging viruses, and many other viruses of public health significance.

### Rabies Testing

Provides testing on animals suspected of carrying the rabies disease. As the sole provider of rabies testing in Florida, laboratory results are used by health care providers to determine if treatment is needed for human exposure.

### Biological and Chemical Threat

Provides 24/7 response to test for biological and chemical threats as well as training counties in Florida and sentinel facilities in specimen collection.

### Sexually Transmitted Infections

Provides a variety of screening tests for STIs such as Chlamydia, Gonorrhea, Hepatitis A, B, and C, Herpes, HIV, and Syphilis. Diagnosing and treating patients infected with STIs are crucial to controlling the spread of these communicable diseases in Florida.

### Tuberculosis Testing

Provides state-of-the-art testing as well as reference and diagnostic testing for tuberculosis that supports county health departments, hospital laboratories, and private laboratories across the state.

### Responding to Public Health Emergencies

Works with other agencies to develop and maintain state and national disaster preparedness plans for environmental and public health emergencies. Also develops and implements test procedures to rapidly detect biological, chemical, and other threat agents.