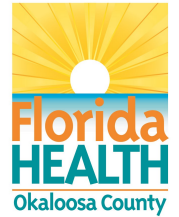


Weekly Disease Surveillance Report



2024 Reporting Week 06: February 4 — February 10

This weekly report is produced by the DOH-Okaloosa Epidemiology Section to provide situational awareness to community partners. Data is subject to change as additional information is gathered.

Updates and Recommendations for the 2023-2024 Flu Season

- According to the CDC, three flu vaccines are preferentially recommended for people 65 years and older: **Fluzone High-Dose Quadrivalent vaccine, Flublok Quadrivalent recombinant flu vaccine, and Flud Quadrivalent adjuvanted flu vaccine.** Based on a review of available studies, these vaccines are potentially more effective than standard dose unadjuvanted flu vaccines for this age group. There is no preferential recommendation for people younger than 65 years.
- **The composition of flu vaccines has been updated.** Please visit [Information for the 2023-2024 Flu Season](#) to view the make-up of the egg-based and cell- or recombinant-based flu vaccines.
- **People with egg allergy may get any vaccine (egg-based or non-egg-based) that is otherwise appropriate for their age and health status.** All vaccines should be given in settings where allergic reactions can be recognized and treated quickly.
- Please visit [Summary: 'Prevention and Control of Seasonal Influenza with Vaccines: Recommendations of the Advisory Committee on Immunization Practices \(ACIP\)—United States, 2023-24'](#) for a complete resource regarding the 2023-2024 Influenza Season and Vaccination Recommendations.

ILI Trends

Influenza-like illness (ILI) in Okaloosa increased during Week 06, and is higher than the previous year's level (current level: 5.30%; last year: 3.72%). Please stay vigilant, promote vaccination, and visit the weekly [Florida FLU REVIEW](#).

COVID-19 Trends

COVID-19 hospital admission levels for Okaloosa County remained LOW for Week 06. For more information on the recommended actions based on the current levels, please visit the [CDC COVID-19 by County](#) webpage.

Contact Us:

Florida Department of Health
in Okaloosa County

Epidemiology Section

24/7 Disease Reporting:
850-833-9065

Confidential Fax:

850-833-7577

okaloosaepi@flhealth.gov

COVID-19 Corner

Week 05 Hospital Admission Level

COVID-19 Hospital Admissions Level	New Hospital Admissions per 100K Population per Week
LOW	6.5

PREVIOUS WEEK LEVEL: LOW

The Community Level has been retired with the end of the federal COVID-19 Public Health Emergency (PHE).

As a replacement, COVID-19 Hospital Admission Level will be used as an indicator for recommended interventions in the community based on each level and individual or community focus.

For more information on the levels and recommended actions based on the current level, please visit the [CDC COVID-19 by County](#) webpage.

HIGH	≥ 20.0
MEDIUM	10.0 - 19.9
LOW	<10.0

In the Know: Respiratory Illness Elevated But Slowing

The Centers for Disease Control and Prevention (CDC) provides a summary of key viral respiratory illness findings for COVID-19, influenza, and RSV from the past week and access to additional information and figures on their [Respiratory Virus Data Channel Weekly Snapshot](#).

Currently, seasonal influenza, COVID-19, and RSV are elevated nationally and Florida is experiencing high overall respiratory illness trends as well. Fortunately, the rapid increases in influenza and COVID-19 activity appear to be slowing. Please visit the CDC [Respiratory Illness Activity Levels](#) website to view current activity at the state level.

For more information and recommendations on respiratory illness activity in your local county area, please visit the [CDC Respiratory Illnesses website](#).



Influenza-Like Illness

Week 06: February 4 - February 10

Influenza-like Illness (ILI) is defined as fever greater than or equal to 100°F AND cough and/or sore throat in the absence of another known cause.

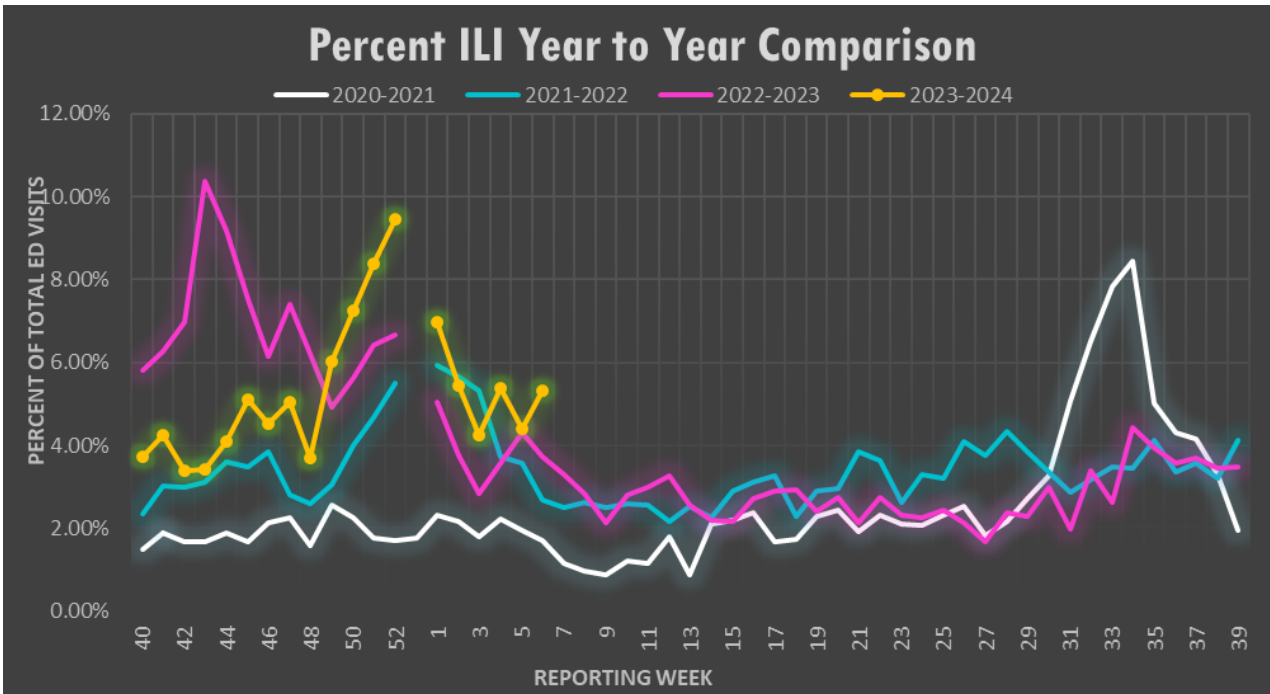


Figure 2: Annual comparison of the percent of all hospital ED visits due to ILI for Okaloosa county for the 2020-21, 2021-22, 2022-23 and 2023-2024 influenza seasons by week. Data source: ESSENCE

ANALYSIS: During Week 06, flu reporting partners and ESSENCE (a syndromic surveillance system) reported an increase in ILI activity for Okaloosa County. The percentage of ILI ED visits in Okaloosa County increased this week (4.41% during Week 05 to 5.30% during Week 06). Flu partners reported 77 positive rapid flu tests this week (46 Influenza A and 31 Influenza B). Over the past three weeks, no influenza specimen submitted to the state lab were positive. There were no ILI admissions or deaths reported by flu partners this week. No outbreaks have been reported in the past 3 weeks. The percentage of total ILI ED visits for Week 06 is higher than that of Week 06 last year.
Note: Other respiratory syndromes can be represented by increased ILI case numbers.
 Data Source: ESSENCE

% ILI by Age Group Week 06, 2024			
Age Range	ILI Visits	Total ED Visits	% Total ILI Visits
0-4	28	181	15.47%
5-19	39	330	11.82%
20-34	29	524	5.53%
35-54	22	558	3.94%
55-74	13	577	2.25%
75+	6	410	1.46%

Data Source: ESSENCE

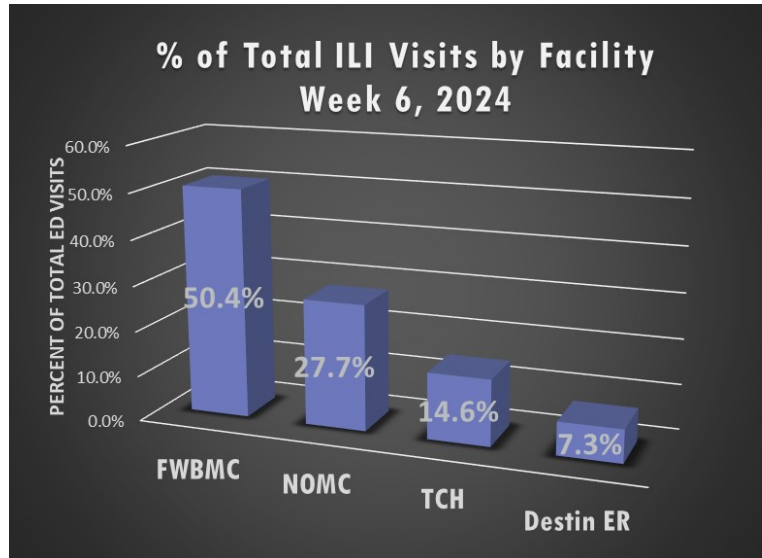


Figure 3: Hospital ED visits meeting ILI criteria stratified by facility. Percentages calculated based on total number of ILI ED visits. (n=137). Data source: ESSENCE



Syndromic Surveillance

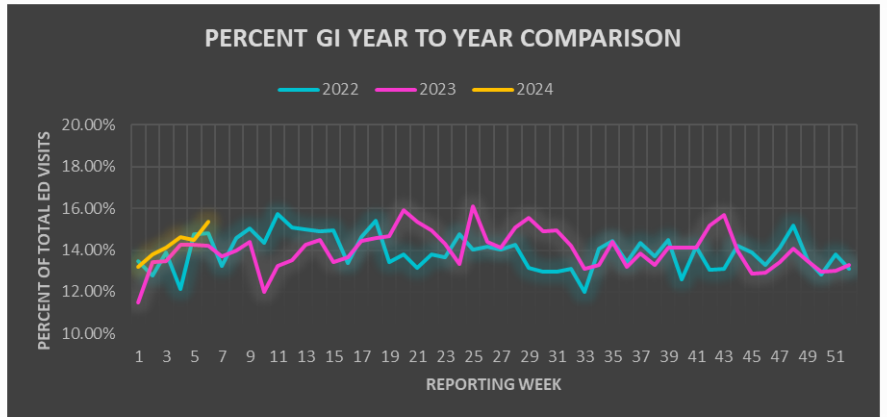
Week 06: February 4 - February 10

Gastro-intestinal Illness (GI)

Figure 4:

Annual comparison for the percent of GI for all Okaloosa County hospital ED visits week to week for 2022, 2023, and 2024.

Data Source: ESSENCE

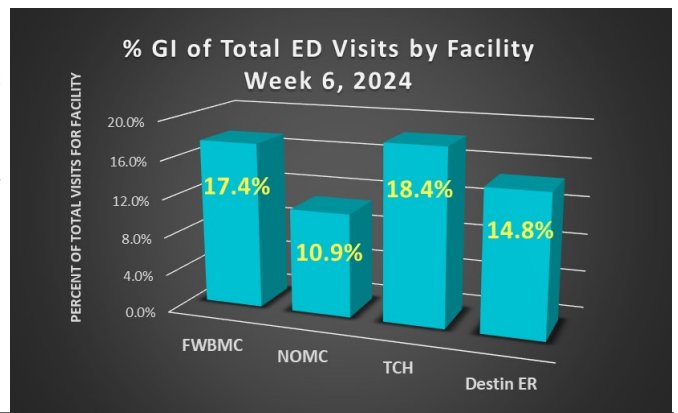


% GI by Age Group Week 06, 2024			
Age Range	GI Visits	Total ED Visits	% Total GI Visits
0-4	31	181	17.13%
5-19	58	330	17.58%
20-34	96	524	18.32%
35-54	95	558	17.03%
55-74	80	577	13.86%
75+	37	410	9.02%

Figure 5:

Hospital emergency room visits due to GI illness stratified by facility.

Data source: ESSENCE

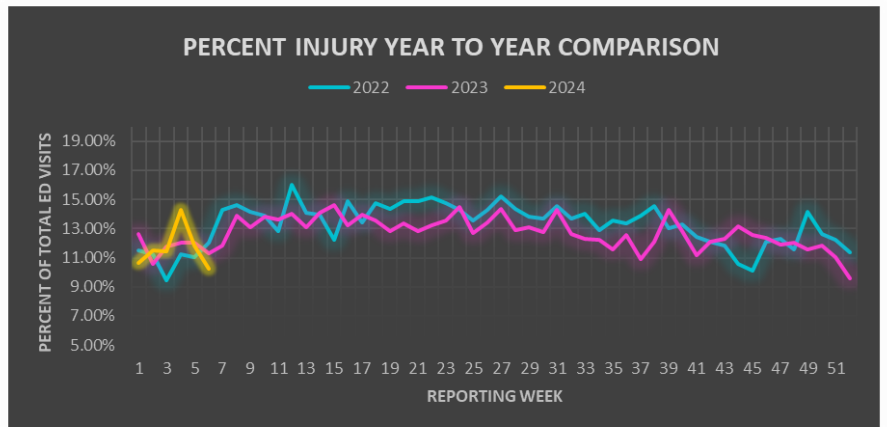


Injury

Figure 6:

Annual comparison for the percent of Injury for all Okaloosa County hospital ED visits week to week for 2021, 2022, and 2023.

Data Source: ESSENCE

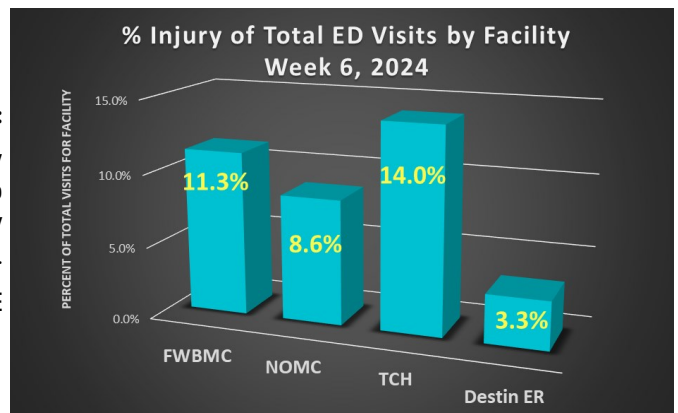


% Injury by Age Group Week 06, 2024			
Age Range	Injury Visits	Total ED Visits	% Total Injury Visits
0-4	13	181	7.18%
5-19	32	330	9.70%
20-34	46	524	8.78%
35-54	47	558	8.42%
55-74	55	577	9.53%
75+	72	410	17.56%

Figure 7:

Hospital emergency room visits due to Injury stratified by facility.

Data source: ESSENCE





Syndromic Surveillance

Week 06: February 4 - February 10

Total ED Visits by Syndrome

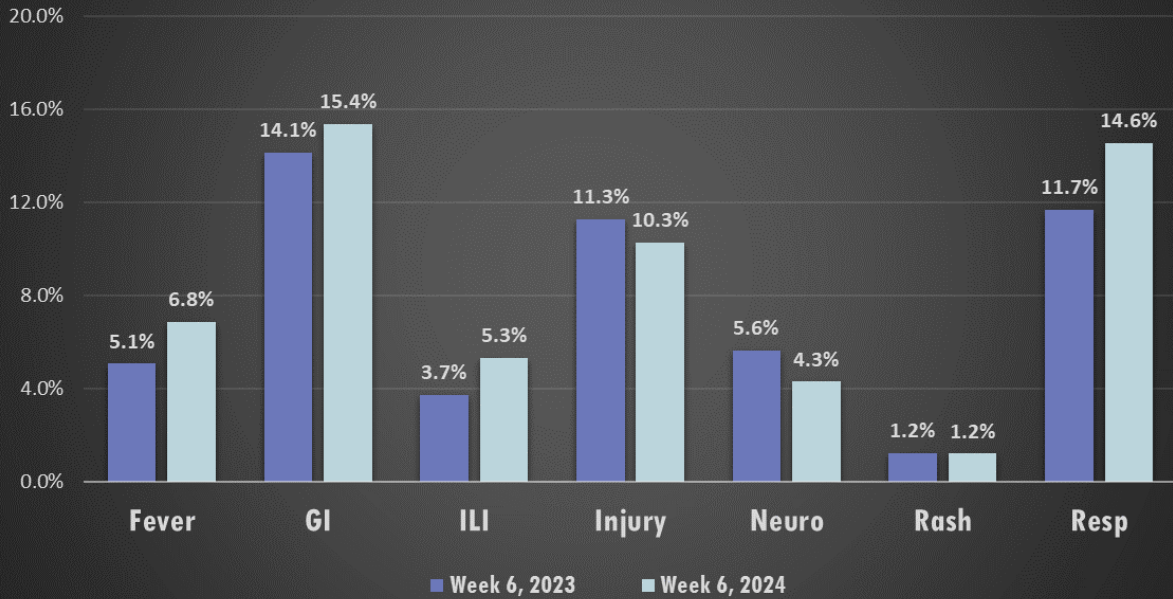
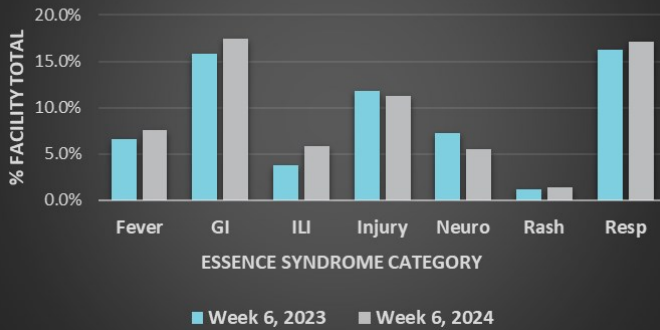


Figure 8: Hospital Emergency Department (ED) visits from 2024 Week 06 by select syndrome category. Percentages calculated based on total number of ED visits (n=2548). Some syndrome categories are not represented; therefore, represented percentages will not total 100%. Data source: ESSENCE

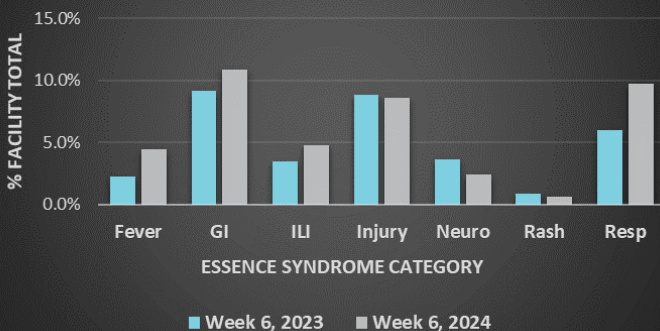
Fort Walton Beach Medical Center ED Presentations



Week 06 - Fort Walton Beach Medical Center

Age Range	Top Syndrome	Total ED Visits for Syndrome
0-4	RESP	39
5-19	RESP	43
20-34	GI	43
35-54	GI	43
55-74	GI, RESP	39, 39
75+	INJURY	33

North Okaloosa Medical Center ED Presentations



Week 06 - North Okaloosa Medical Center

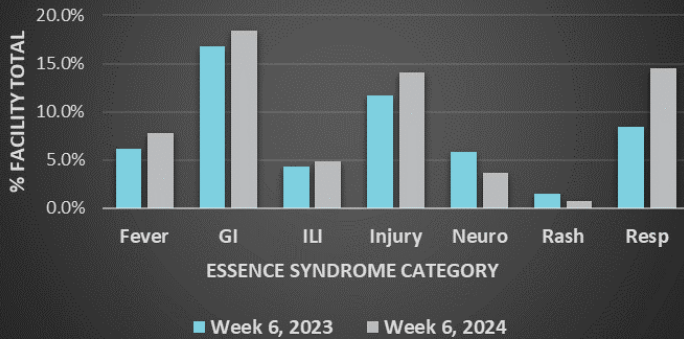
Age Range	Top Syndrome	Total ED Visits for Syndrome
0-4	FEVER	15
5-19	RESP	18
20-34	GI	25
35-54	GI	24
55-74	RESP	23
75+	INJURY	15



Syndromic Surveillance

Week 06: February 4 - February 10

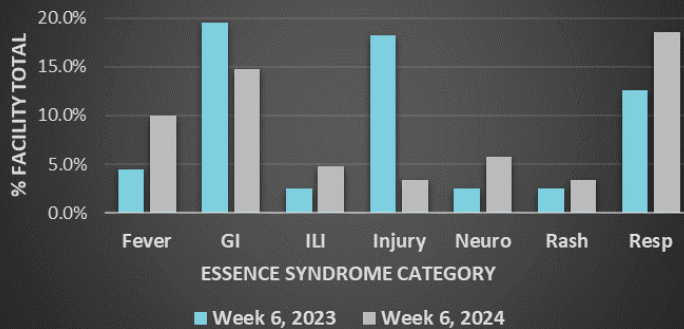
Twin Cities Hospital ED Presentations



Week 06 - Twin Cities Hospital

Age Range	Top Syndrome	Total ED Visits for Syndrome
0-4	FEVER	10
5-19	FEVER, GI, INJURY	9, 9, 9
20-34	GI	24
35-54	GI	19
55-74	GI, RESP	16, 16
75+	INJURY	21

Destin ER ED Presentations



Week 06 - Destin ER

Age Range	Top Syndrome	Total ED Visits for Syndrome
0-4	RESP	3
5-19	RESP	6
20-34	GI, RESP	4, 4
35-54	RESP	11
55-74	RESP	8
75+	GI	10

Week 06 - Okaloosa County

Age Group	Top Syndrome
0-4	RESP
5-19	RESP
20-34	GI
35-54	GI
55-74	RESP
75+	INJURY



Data Source: ESSENCE