



Weeks 35- 36: August 24– September 6, 2014



Summary

The Florida Department of Health (DOH) uses many different surveillance systems to measure influenza activity. A summary of all these systems can be found on our website at <http://www.floridahealth.gov/floridaflu>.

National Influenza:

- Influenza virus continues to circulate at low levels nationally.
- The predominantly circulating strain in recent weeks has been influenza B, which is typical for this time of year.
- The Centers for Disease Control and Prevention continue to recommend vaccination as long as influenza viruses are circulating.
 - Nationally (including Florida), almost all circulating influenza is a good match for the vaccine.

State Influenza:

- Emergency department (ED) and urgent care center (UCC) influenza-like illness (ILI) visits have remained low but are increasing in all regions, which is typical for this time of year.
- In weeks 35 and 36, 36 specimens were submitted to Bureau of Public Health Laboratories (BPHL) for influenza testing. Twelve specimens tested PCR positive: three for influenza A (H3) and nine for influenza B.
- In week 36, the preliminary estimated number of deaths due to pneumonia or influenza in Florida is lower than the seasonal baseline, based on previous years' data.
- Pasco County reported one outbreak of influenza in a skilled nursing facility in week 36.

September 10, 2014

Posted on the Bureau of Epidemiology website:
<http://www.floridahealth.gov/floridaflu>

Produced by: Bureau of Epidemiology, Florida Department of Health

Contributors: Heather Rubino, PhD ; Lea Heberlein-Larson, MPH; Valerie Mock; Janet Hamilton, MPH; Leah Eisenstein, MPH

In this Issue:

Summary	1
NREVSS Respiratory Virus Surveillance	1
ESSENCE-FL Syndromic Surveillance Summary	2
ESSENCE-FL Pneumonia and Influenza Mortality	2
Influenza and ILI Outbreaks	2

TABLE 1: Summary of Florida ILI Activity for Week 36

Measure	Difference from previous week	Current week 36	Previous week 35
Percent of total visits to participating outpatient ILINet providers for ILI	▼ 0.1	0.6%	0.7%
Percent of emergency department and urgent care center visits (from ESSENCE-FL) due to ILI	▲ 0.4	2.0%	1.6%
Percent of laboratory specimens that were positive for influenza (out of total number tested)	▲ 2.4	36.4%	32.0%
Number of ILI outbreaks reported in EpiCom	▲ 1	1	0

NREVSS Respiratory Virus Surveillance

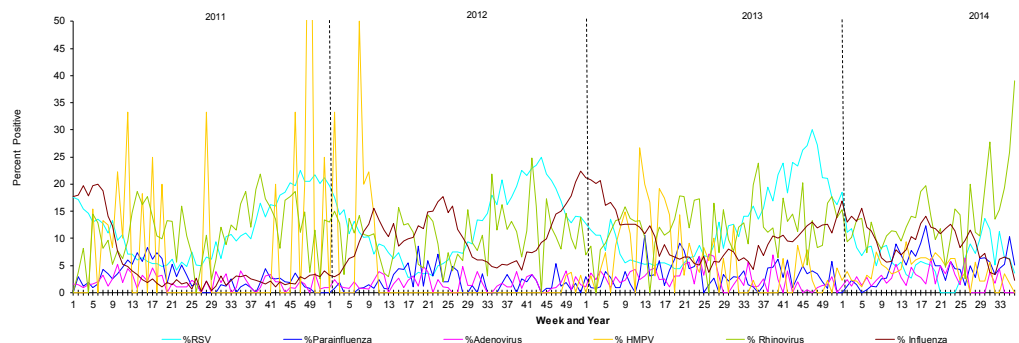
The National Respiratory and Enteric Virus Surveillance System (NREVSS) collects data from laboratories around the country on a weekly basis. NREVSS monitors temporal and geographic patterns of six common respiratory viruses. Four Florida facilities reported in week 36.

FIGURE 1 shows the percentage of positive tests for six respiratory viruses reported by NREVSS-participating laboratories in Florida.

The six respiratory viruses summarized in Figure 1 are:

- Respiratory syncytial virus (RSV)
- Parainfluenza 1-3
- Adenovirus
- Human metapneumo virus (HMPV)
- Rhinovirus
- Influenza

FIGURE 1: Percentage of Positive Respiratory Virus Tests as Collected by NREVSS, Florida Week 1, 2011 to Week 36, 2014, as of Sept 10, 2014

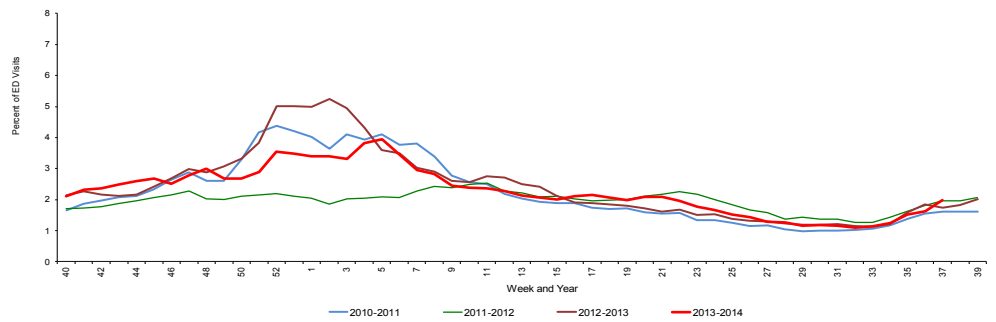


ESSENCE-FL collects data daily from 213 EDs and UCCs. These data are processed into 11 different syndrome categories based on the patient's chief complaint. One of the categories is ILI, which is composed of chief complaints that include the words "influenza" or "flu," or complaints that contain fever plus cough or sore throat.

FIGURE 2 shows ESSENCE-FL data on ILI visits to EDs and UCCs as a percentage of all visits.

Overall activity for ILI reported in ESSENCE-FL is near expected levels for this time of year.

FIGURE 2: Percentage of ILI visits from Emergency Department (ED) and Urgent Care Center (UCC) Chief Complaints, ESSENCE-FL Participating Facilities (N=213), Week 40, 2010 through Week 37, 2014 accessed September 10, 2014



ESSENCE-FL Pneumonia and Influenza Mortality

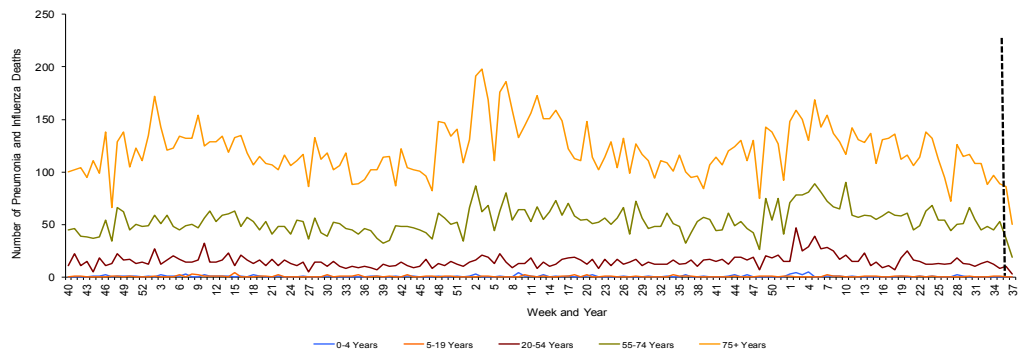
FDOH Bureau of Vital Statistics and county health departments (CHDs) collect death record data electronically in all 67 Florida counties, which can be accessed using ESSENCE-FL. For pneumonia and influenza surveillance, death record literals are queried in ESSENCE-FL using a free-text query that searches for references to pneumonia and influenza on death certificates. Any mention of pneumonia or influenza in the death certificate literals, with certain exceptions, is counted as a pneumonia and influenza death. Current season pneumonia and influenza death numbers are preliminary estimates, and may change as more data are received. *The most recent data available are displayed here. ESSENCE-FL vital statistics death records data are currently considered to be complete through week 35, 2014.*

FIGURE 3 shows pneumonia and influenza deaths for all Florida counties by age group, Week 40, 2011 - Week 37, 2014, as reported into ESSENCE-FL.

For week 35 (ending August 30, 2014), there were:

- 129 preliminary estimated pneumonia and influenza deaths reported.
- Upper bound of 95% confidence interval for prediction: 183 deaths.
- **No excess deaths.**

FIGURE 3: Vital Statistics Florida Pneumonia and Influenza Deaths by Age Group, Reported into ESSENCE-FL, Week 40, 2011 through Week 37, 2014



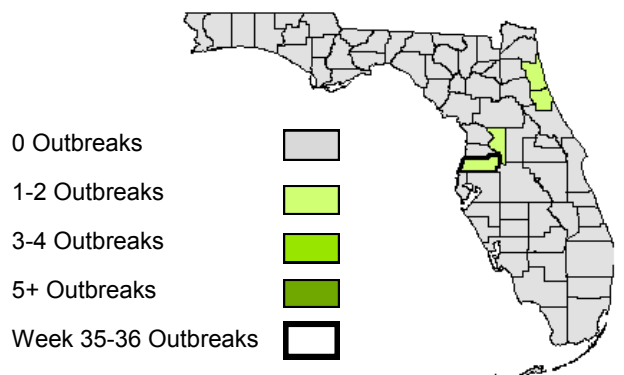
Death records data reported into ESSENCE-FL are currently considered to be complete through week 35, 2014.

Influenza and ILI Outbreaks

TABLE 2 : Summary of Florida ILI Outbreaks by Facility Type, Week 21, 2014-Week 36, 2014

Facility Type	Number of Outbreaks	Implicated Viruses
Jails and Prisons	1	•One outbreak due to human coxsackievirus A21
Nursing Homes	3	•Three outbreaks due to influenza A (H3)
Total	4	•One outbreak due to human coxsackievirus A21 •Three outbreaks due to influenza A (H3)

Map 1: Influenza and ILI outbreaks by County, Weeks 21-36, 2014 as Reported by 11:00 a.m. September 10, 2014



In week 36 one outbreak of influenza was reported into EpiCom.

Pasco County: A skilled nursing facility reported three staff and three residents with ILI. Three specimens were collected and sent to BPHL-Tampa where they were PCR positive for influenza A (H3). Infection control recommendations were discussed with the facility's leadership.