

# ***Summary of Cancer Data***

## **Section 5**

Cancer incidence data are collected, verified, and maintained by the Florida Cancer Data System (FCDS), Florida's statewide cancer registry. The FCDS is administered by the Florida Department of Health, Bureau of Epidemiology, and operated by the Sylvester Comprehensive Cancer Center at the University of Miami Leonard M. Miller School of Medicine.

The FCDS began operation with a pilot project for cancer registration in 1980, and commenced statewide collection of cancer incidence data from all Florida hospitals in 1981. The FCDS now collects incidence data from hospitals, freestanding ambulatory surgical centers, radiation therapy facilities, pathology laboratories, and dermatopathologists' offices.

During 2003, physicians diagnosed 94,910 primary cancers among Floridians, an average of 260 cases per day. Cancer occurs predominantly among older people; age is the top risk factor. Sixty-two percent of the newly diagnosed cancers in 2003 occurred in persons age 65+; this age group accounts for 18% of Florida's population. The four most common cancers in Floridians were lung and bronchus (15,768 cases), prostate (12,817 cases), female breast (11,933 cases), and colorectal (10,620 cases), which accounted for 57% of all new cases in blacks, and 54% in whites. Fifty-three percent of new cancers were diagnosed in males. The number of new cancer cases in Florida's five most populous counties (Broward, Miami-Dade, Hillsborough, Pinellas, and Palm Beach) which had 43% of Florida's population accounted for 40% of the new cancer cases in Florida in 2003.

Over the 23-year period from 1981 to 2003, males had a higher incidence (age-adjusted incidence rate) than females. Among blacks, the incidence among males was between 54% and 100% higher than that among females. Among whites, the incidence among males was between 30% and 53% higher than that among females. White females had higher ageadjusted incidence rates than black females in all 23 years. The racial disparity varied between 10% and 27%. Black males had higher age-adjusted incidence rates than white males in all years, except 1987 and 1988. The racial disparity between black and white males increased from 1989 until 1995; however, has declined from 19% to 5% since 1995.

### **Additional Resources**

More information about the burden of cancer in Florida is provided in the *Florida Annual Cancer Report*, an epidemiological series, available on the DOH website [www.doh.state.fl.us/disease\\_ctrl/epi/cancer/CancerIndex.htm](http://www.doh.state.fl.us/disease_ctrl/epi/cancer/CancerIndex.htm), or the Florida Cancer Data System website [www.fcds.med.miami.edu](http://www.fcds.med.miami.edu)

**Table 1. Number of New Cancer Cases by Sex and Race, Florida, 2003**

	All Cancers	Lung & Bronchus	Prostate	Breast	Colorectal	Bladder	Head & Neck	Non- Hodgkin (1)	Melanoma	Cervix
<b>Florida (2)</b>	<b>94,910</b>	<b>15,768</b>	<b>12,817</b>	<b>11,933</b>	<b>10,620</b>	<b>4,836</b>	<b>3,667</b>	<b>3,590</b>	<b>3,181</b>	<b>840</b>
Female	44,440	7,079		11,933	5,178	1,233	1,009	1,639	1,217	840
Male	50,431	8,678	12,817		5,438	3,601	2,657	1,949	1,963	
Black	8,171	1,120	1,550	1,077	936	157	316	260		131
White	85,045	14,479	11,063	10,607	9,480	4,607	3,283	3,254	3,115	686
Black Female	3,854	395		1,077	503	57	73	127		131
White Female	39,737	6,612		10,607	4,578	1,152	914	1,478	1,188	686
Black Male	4,315	725	1,550		432	100	242	133		
White Male	45,276	7,858	11,063		4,899	3,453	2,369	1,775	1,926	

Source of data: Florida Cancer Data System

(1) Non-Hodgkin refers to Non-Hodgkin lymphoma throughout this report.

(2) Florida totals throughout this report include 710 new cancers in persons of "Other" races, 984 cases with unknown race, 39 cases with unknown sex, and 3 cases with unknown age. Totals by sex include unknown age, race and Other races; totals by race include unknown sex and age.

Table 2. Number of New Cancer Cases by County, Florida, 2003

	All Cancers	Lung & Bronchus	Prostate	Breast	Colorectal	Bladder	Head & Neck	Non- Hodgkin	Melanoma	Cervix
<b>Florida</b>	<b>94,910</b>	<b>15,768</b>	<b>12,817</b>	<b>11,933</b>	<b>10,620</b>	<b>4,836</b>	<b>3,667</b>	<b>3,590</b>	<b>3,181</b>	<b>840</b>
Alachua	897	160	109	133	102	24	33	32	26	^
Baker	93	19	13	12	11	^	^	^	^	^
Bay	729	144	94	100	86	39	33	25	24	^
Bradford	99	17	10	15	15	^	^	^	^	^
Brevard	3,301	570	449	415	335	219	109	112	122	25
Broward	8,635	1,391	950	1,110	1,031	454	293	356	264	76
Calhoun	51	20	^	^	^	^	^	^	^	^
Charlotte	1,219	217	191	138	128	72	59	47	20	^
Citrus	1,044	225	170	131	110	38	41	33	27	^
Clay	689	139	84	92	90	24	26	17	28	^
Collier	1,918	269	355	203	175	117	68	79	91	15
Columbia	295	66	23	35	38	12	11	^	13	^
Miami-Dade	10,419	1,184	1,627	1,334	1,313	421	396	429	237	154
DeSoto	155	25	23	20	26	^	^	^	^	^
Dixie	97	26	^	14	^	^	^	^	^	^
Duval	3,562	602	502	457	381	159	148	121	93	38
Escambia	1,513	265	216	234	133	64	70	62	42	11
Flagler	529	81	95	83	55	26	19	18	11	^
Franklin	52	14	^	^	^	^	^	^	^	^
Gadsden	226	40	34	33	18	11	14	^	^	^
Gilchrist	69	17	^	^	10	^	^	^	^	^
Glades	28	^	^	^	^	^	^	^	^	^
Gulf	79	12	^	10	12	^	^	^	^	^
Hamilton	33	^	^	^	^	^	^	^	^	^
Hardee	128	21	21	18	^	^	^	^	^	^
Hendry	148	34	14	^	14	^	^	^	^	^
Hernando	1,230	257	181	123	145	78	41	42	36	11
Highlands	793	153	111	88	86	41	39	26	20	^
Hillsborough	4,913	758	655	638	548	216	174	180	183	55
Holmes	68	10	^	^	^	^	^	^	^	^
Indian River	896	167	117	74	125	47	31	28	39	^
Jackson	156	28	20	10	22	^	^	^	10	^
Jefferson	75	^	11	12	^	^	^	^	^	^
Lafayette	31	^	^	^	^	^	^	^	^	^
Lake	2,066	342	292	250	218	123	86	89	80	12
Lee	3,199	559	459	392	301	170	135	127	151	22
Leon	807	119	109	119	85	25	31	34	24	^
Levy	231	48	29	18	30	^	16	^	^	^
Liberty	33	^	^	^	^	^	^	^	^	^
Madison	82	17	11	^	10	^	^	^	^	^
Manatee	1,816	331	241	203	231	102	69	76	33	12
Marion	2,016	408	269	255	251	99	65	68	56	^
Martin	1,112	202	180	144	120	61	41	30	55	^
Monroe	422	85	30	49	53	13	28	13	22	^
Nassau	316	58	45	33	34	10	13	13	11	^
Okaloosa	883	157	116	112	99	59	30	34	31	^
Okeechobee	242	51	33	24	19	12	13	10	^	^
Orange	4,035	600	588	554	423	167	168	146	126	51
Osceola	848	140	102	123	88	32	27	34	31	11
Palm Beach	8,122	1,204	970	1,025	823	548	317	351	389	56
Pasco	2,924	525	431	311	332	173	113	96	86	21
Pinellas	6,208	1,145	751	786	734	364	267	194	198	53
Polk	3,266	554	419	442	352	156	105	130	136	30
Putnam	458	110	53	55	49	17	22	19	12	^
Saint Johns	724	133	93	108	76	36	32	31	31	^
Saint Lucie	1,267	250	185	132	147	57	48	47	42	12
Santa Rosa	659	118	96	102	71	35	46	15	22	^
Sarasota	2,881	525	384	371	334	180	109	116	98	13
Seminole	1,573	223	249	225	151	84	47	63	60	18
Sumter	475	110	49	47	57	25	15	21	11	^
Suwannee	206	43	27	31	20	11	^	14	^	^
Taylor	103	25	13	12	12	^	^	^	^	^
Union	147	36	16	^	^	^	14	^	^	^
Volusia	3,253	617	419	373	386	135	124	118	99	25
Wakulla	103	15	10	16	^	^	^	^	^	^
Walton	187	38	18	23	18	^	^	^	^	^
Washington	76	19	^	^	12	^	^	^	^	^

^ Statistics are not displayed for cells with fewer than 10 cases.

Source of data: Florida Cancer Data System

**Table 3. Age-adjusted Incidence Rates (1) by Sex and Race, Florida, 2003**

	All Cancers			Lung & Bronchus			Prostate			Breast			Colorectal		
	Rate	CI		Rate	CI		Rate	CI		Rate	CI		Rate	CI	
<b>Florida (2)</b>	<b>431.6</b>	428.8	434.4	<b>69.1</b>	68.0	70.2	<b>124.4</b>	122.2	126.6	<b>105.8</b>	103.9	107.8	<b>46.6</b>	45.7	47.5
Female	377.6	374.0	381.2	56.3	55.0	57.7				105.8	103.9	107.8	40.5	39.4	41.7
Male	503.4	499.0	507.9	85.1	83.3	86.9	124.4	122.2	126.6				54.1	52.7	55.6
Black	418.0	408.7	427.5	59.3	55.8	63.0	193.1	183.1	203.6	91.7	86.2	97.5	49.8	46.5	53.2
White	432.4	429.4	435.4	70.1	68.9	71.2	117.8	115.6	120.0	107.3	105.2	109.4	45.8	44.8	46.7
Black Female	342.1	331.2	353.3	36.4	32.8	40.3				91.7	86.2	97.5	46.4	42.4	50.8
White Female	381.9	378.0	385.9	58.5	57.0	59.9				107.3	105.2	109.4	39.5	38.3	40.7
Black Male	525.7	509.1	542.8	91.6	84.6	99.1	193.1	183.1	203.6				54.4	49.0	60.3
White Male	499.8	495.2	504.5	84.5	82.7	86.5	117.8	115.6	120.0				53.6	52.1	55.1

	Bladder			Head & Neck			Non-Hodgkin			Melanoma			Cervix		
	Rate	CI		Rate	CI		Rate	CI		Rate	CI		Rate	CI	
<b>Florida (2)</b>	<b>20.6</b>	20.0	21.2	<b>17.2</b>	16.6	17.8	<b>16.7</b>	16.1	17.2	<b>17.1</b>	16.5	17.7	<b>9.0</b>	8.3	9.6
Female	9.4	8.9	10.0	8.7	8.2	9.3	13.7	13.0	14.4	13.2	12.4	13.9	9.0	8.3	9.6
Male	35.3	34.2	36.5	27.1	26.1	28.2	20.1	19.2	21.0	22.3	21.3	23.3			
Black	9.0	7.6	10.5	15.1	13.4	16.9	11.9	10.4	13.5				10.7	8.9	12.8
White	21.6	21.0	22.2	17.4	16.8	18.0	16.9	16.3	17.5	17.1	16.5	17.7	8.9	8.2	9.6
Black Female	5.5	4.1	7.2	6.2	4.9	7.9	10.7	8.9	12.9				10.7	8.9	12.8
White Female	9.7	9.1	10.3	8.9	8.3	9.6	13.8	13.1	14.6	13.2	12.4	14.0	8.9	8.2	9.6
Black Male	14.2	11.4	17.6	26.5	23.1	30.4	13.2	10.9	16.0						
White Male	36.9	35.6	38.1	27.1	26.1	28.3	20.4	19.4	21.4	22.3	21.3	23.3			

(1) Rates are expressed as number of cases per 100,000 population per year, adjusted to the 2000 U.S. standard population.

(2) Florida total rates throughout this report include 710 new cancers in persons of "Other" races, 984 cases with unknown race, 39 cases with unknown sex, and 3 cases with unknown age. Total rates by sex include unknown age, race and Other races; rates by race include unknown sex and age.

Source of data: Florida Cancer Data System

Table 4. Age-adjusted Incidence Rates (1) by County, Florida, 2003

	All Cancers			Lung & Bronchus			Prostate			Breast			Colorectal		
	Rate	CI		Rate	CI		Rate	CI		Rate	CI		Rate	CI	
Florida	431.6	428.8	434.4	69.1	68.0	70.2	124.4	122.2	126.6	105.8	103.9	107.8	46.6	45.7	47.5
Alachua	466.6	436.3	498.5	84.6	71.9	98.9	132.2	108.2	160.4	126.8	106.1	150.7	54.4	44.3	66.1
Baker	443.9	356.3	549.1	86.6	51.5	140.5	119.3	62.4	240.9	113.5	58.4	202.0	59.8	29.3	111.0
Bay	422.3	392.0	454.5	82.8	69.7	97.8	117.4	94.3	145.7	109.4	88.9	133.8	50.8	40.6	63.1
Bradford	334.7	271.9	409.4	56.9	33.1	93.6	76.9	35.6	151.3	107.3	58.6	186.8	49.0	27.4	83.5
Brevard	461.3	445.3	477.8	75.8	69.6	82.5	129.3	117.5	142.2	116.8	105.4	129.3	45.3	40.5	50.7
Broward	422.6	413.6	431.7	66.6	63.1	70.3	106.3	99.6	113.3	102.5	96.4	108.9	48.3	45.3	51.4
Calhoun	333.4	248.0	443.3	130.3	79.5	206.8	^	^	^	^	^	^	^	^	^
Charlotte	388.5	364.2	415.2	65.2	56.0	76.9	118.4	101.2	140.6	92.5	75.4	115.1	37.4	30.5	46.8
Citrus	414.6	386.4	445.7	83.1	71.7	97.6	124.5	105.7	149.1	116.5	94.0	145.6	38.1	30.9	48.3
Clay	456.0	422.1	492.2	92.5	77.5	109.6	121.6	96.2	153.0	109.3	87.9	134.7	62.7	50.2	77.4
Collier	395.2	376.6	414.7	51.2	45.0	58.4	141.9	127.1	158.6	87.6	75.0	102.4	33.5	28.6	39.5
Columbia	453.3	402.8	508.9	97.9	75.6	125.3	75.9	47.5	118.3	107.3	74.5	151.3	58.1	41.0	80.5
Miami-Dade	412.4	404.5	420.4	46.4	43.8	49.2	145.4	138.4	152.7	97.4	92.3	102.9	51.6	48.8	54.5
DeSoto	349.0	294.1	412.8	55.2	35.0	85.1	93.5	58.9	146.2	98.0	57.9	162.2	59.2	37.9	90.0
Dixie	517.0	416.2	639.2	116.4	75.8	178.4	^	^	^	166.9	87.5	302.1	^	^	^
Duval	467.7	452.4	483.5	80.7	74.3	87.5	156.9	143.2	171.7	105.3	95.8	115.5	50.7	45.7	56.1
Escambia	466.1	442.8	490.3	80.7	71.3	91.2	149.7	130.3	171.6	133.3	116.6	151.9	41.0	34.3	48.7
Flagler	454.8	412.7	502.7	61.5	48.3	81.0	148.2	119.0	189.7	153.0	117.8	201.4	45.2	33.4	63.4
Franklin	328.3	242.3	446.1	91.5	48.3	171.1	^	^	^	^	^	^	^	^	^
Gadsden	470.7	411.1	536.9	83.4	59.5	114.2	162.8	112.1	230.6	122.1	83.8	173.2	37.9	22.4	60.5
Gilchrist	393.5	305.5	503.7	93.5	54.2	156.6	^	^	^	^	^	^	56.6	27.0	111.2
Glades	200.9	131.0	304.7	^	^	^	^	^	^	^	^	^	^	^	^
Gulf	414.2	327.4	523.0	62.3	32.1	117.9	^	^	^	119.0	55.1	239.4	64.0	32.9	120.7
Hamilton	255.4	175.0	361.8	^	^	^	^	^	^	^	^	^	^	^	^
Hardee	441.8	367.9	527.5	72.3	44.5	112.6	146.9	90.5	231.1	127.9	74.9	209.9	^	^	^
Hendry	459.1	387.7	540.8	104.0	71.9	146.8	91.4	48.5	163.7	^	^	^	44.2	24.1	75.6
Hernando	477.7	448.0	509.8	92.3	80.4	106.6	133.9	114.2	158.4	96.5	78.1	120.1	51.5	42.7	62.8
Highlands	440.6	405.5	479.4	81.4	67.4	99.3	114.0	92.9	142.4	107.0	81.4	141.4	42.2	33.0	55.2
Hillsborough	442.7	430.4	455.3	68.4	63.7	73.5	131.7	121.8	142.4	106.8	98.7	115.5	49.4	45.3	53.7
Holmes	296.1	229.4	380.1	44.6	21.3	87.7	^	^	^	^	^	^	^	^	^
Indian River	406.2	377.5	437.4	68.9	58.3	82.0	104.2	85.8	127.5	71.6	54.7	94.2	52.0	42.5	64.0
Jackson	284.6	241.4	334.3	51.2	34.0	75.3	84.6	51.3	133.0	36.8	17.5	71.3	40.2	25.1	62.2
Jefferson	459.9	361.1	581.8	^	^	^	146.9	71.5	277.1	155.3	77.6	288.1	^	^	^
Lafayette	409.1	277.2	588.4	^	^	^	^	^	^	^	^	^	^	^	^
Lake	494.0	471.3	518.0	76.8	68.4	86.4	139.0	123.0	157.4	123.0	106.9	141.9	46.8	40.5	54.4
Lee	396.2	381.6	411.3	63.1	57.8	69.0	107.8	98.0	118.7	104.2	93.4	116.4	34.5	30.5	39.0
Leon	403.8	375.9	433.4	63.4	52.4	76.2	129.4	105.4	158.2	105.1	86.9	126.4	44.3	35.3	55.1
Levy	438.5	382.6	502.5	87.0	63.9	118.7	105.8	70.3	159.9	68.7	39.8	116.6	55.6	37.1	83.2
Liberty	484.1	329.5	703.3	^	^	^	^	^	^	^	^	^	^	^	^
Madison	397.4	315.6	495.5	78.6	45.7	128.4	116.0	57.6	212.8	^	^	^	48.8	23.3	92.1
Manatee	384.9	366.3	404.4	68.1	60.6	76.5	105.9	92.7	121.0	87.4	74.9	102.0	46.8	40.6	54.0
Marion	433.3	413.4	454.2	82.0	73.9	91.1	116.1	102.3	132.1	109.7	95.6	126.0	52.3	45.7	59.9
Martin	459.5	430.7	490.7	76.3	65.7	89.2	148.8	127.2	174.9	136.5	112.6	166.0	45.6	37.4	56.1
Monroe	425.7	385.3	470.3	84.4	67.2	106.1	60.9	40.1	91.1	98.0	72.3	133.0	53.6	39.9	71.9
Nassau	447.8	398.9	501.7	78.9	59.6	103.4	132.2	95.0	185.0	90.5	62.0	129.4	47.2	32.6	67.3
Okaloosa	478.6	447.3	511.7	84.9	72.0	99.6	133.7	109.9	162.7	112.5	92.5	135.7	53.3	43.3	65.3
Okeechobee	511.0	447.2	582.5	102.1	75.6	136.5	130.4	89.4	187.3	109.2	68.5	170.3	38.0	22.7	61.8
Orange	453.6	439.6	467.9	69.8	64.3	75.7	150.2	138.1	163.2	112.4	103.2	122.2	49.1	44.5	54.1
Osceola	394.1	367.9	421.7	65.0	54.7	76.8	99.7	81.1	122.1	106.4	88.4	127.2	41.9	33.6	51.8
Palm Beach	436.0	426.1	446.1	60.8	57.3	64.5	115.5	108.3	123.3	110.5	103.4	118.1	41.8	38.8	44.9
Pasco	460.0	442.0	478.8	79.1	72.1	87.0	135.8	123.0	150.3	99.6	87.7	113.1	46.7	41.5	52.7
Pinellas	435.4	424.2	446.9	77.2	72.7	82.0	115.5	107.3	124.3	109.2	101.3	117.7	47.2	43.7	50.9
Polk	476.4	459.8	493.5	76.2	69.9	83.0	125.5	113.7	138.5	123.6	112.0	136.4	50.3	45.0	56.0
Putnam	459.4	417.1	505.7	104.6	85.7	127.7	108.7	80.9	145.5	112.7	83.9	150.6	48.3	35.5	65.6
Saint Johns	398.9	370.1	429.8	71.3	59.7	85.1	109.6	88.2	135.7	114.1	93.3	139.5	41.6	32.7	52.7
Saint Lucie	396.3	373.9	420.1	73.7	64.6	84.1	116.1	99.7	135.3	87.6	72.5	105.6	42.5	35.7	50.6
Santa Rosa	495.2	457.5	535.7	87.1	71.9	105.1	153.3	123.1	191.5	141.0	114.8	172.0	55.1	42.8	70.5
Sarasota	428.6	411.1	447.0	71.7	65.2	79.0	116.3	104.5	129.9	113.0	100.1	128.0	45.4	40.2	51.6
Seminole	407.7	387.6	428.7	60.6	52.8	69.2	144.1	126.2	164.2	102.2	89.2	116.8	39.8	33.6	46.8
Sumter	388.9	351.6	431.4	84.7	68.6	106.2	76.9	55.4	110.1	83.1	58.3	120.9	44.5	33.0	61.8
Suwannee	418.7	362.5	483.0	84.5	60.9	116.6	113.8	74.7	170.8	118.2	79.6	174.7	39.0	23.8	63.4
Taylor	441.5	359.8	538.0	101.7	65.7	153.0	106.7	56.6	198.6	97.5	49.8	182.5	49.5	25.5	89.6
Union	1098.3	920.8	1309.2	275.4	190.7	395.9	231.6	127.1	446.3	^	^	^	^	^	^
Volusia	460.4	444.1	477.3	82.8	76.2	90.0	123.3	111.7	136.2	102.5	91.8	114.5	52.1	46.9	58.0
Wakulla	419.6	340.7	513.9	57.0	31.6	98.8	76.5	35.6	161.9	121.5	69.1	203.0	^	^	^
Walton	292.0	250.9	339.6	57.7	40.7	81.7	53.5	31.6	89.7	70.6	44.3	111.9	27.6	16.3	46.1
Washington	274.9	216.0	348.2	65.7	39.5	107.2	^	^	^	^	^	^	44.6	22.8	82.7

(1) Rates are expressed as number of cases per 100,000 population per year, adjusted to the 2000 U.S. standard population.

^ Statistics are not displayed for cells with fewer than 10 cases.

Source of data: Florida Cancer Data System

**Table 4. Age-adjusted Incidence Rates (1) by County, Florida, 2003**

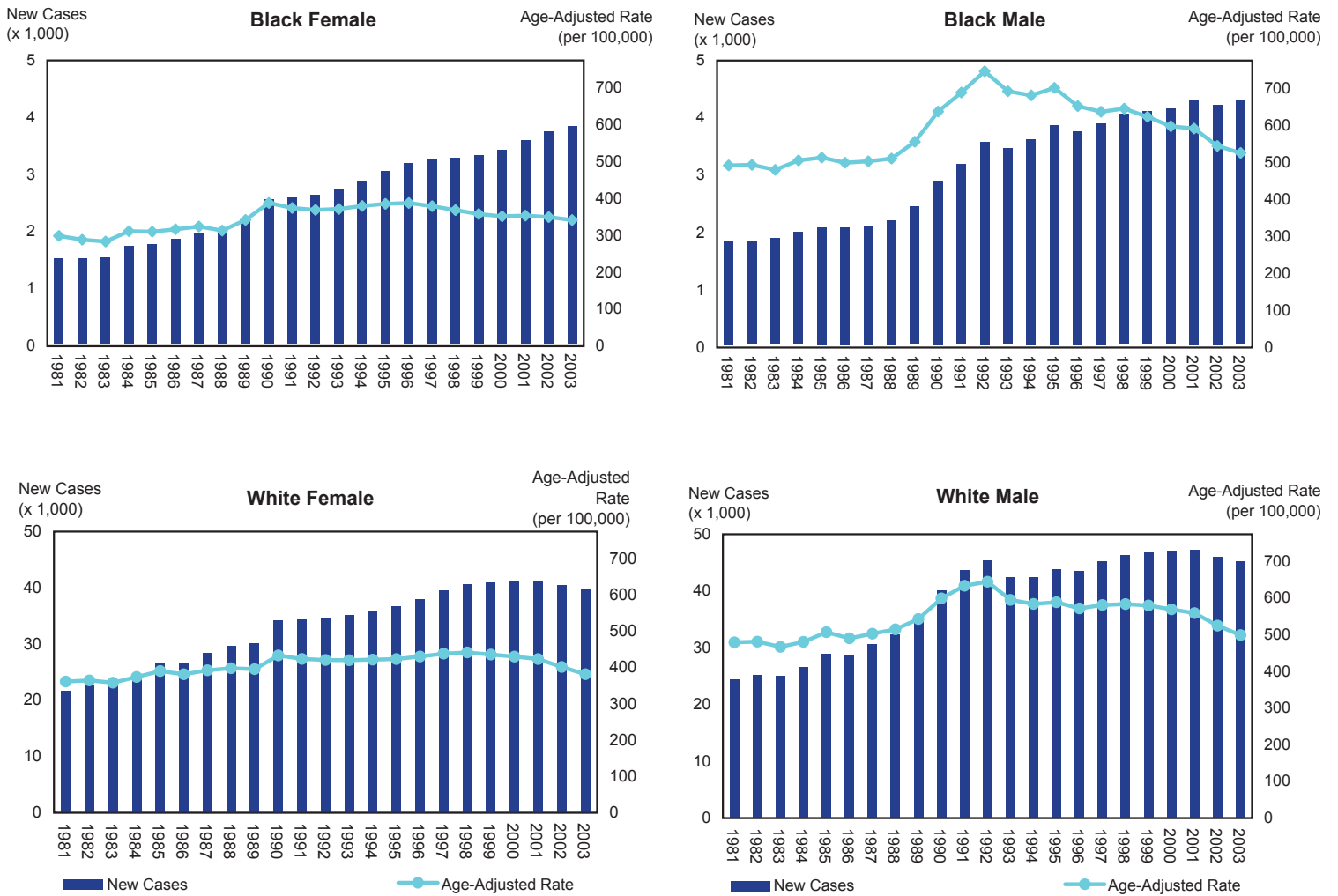
	Bladder			Head & Neck			Non-Hodgkin			Melanoma			Cervix		
	Rate	CI		Rate	CI		Rate	CI		Rate	CI		Rate	CI	
<b>Florida</b>	<b>20.6</b>	20.0	21.2	<b>17.2</b>	16.6	17.8	<b>16.7</b>	16.1	17.2	<b>17.1</b>	16.5	17.7	<b>9.0</b>	8.3	9.6
Alachua	12.6	8.1	18.9	16.8	11.5	23.8	16.3	11.1	23.1	14.9	9.7	22.4	^	^	^
Baker	^	^	^	^	^	^	^	^	^	^	^	^	^	^	^
Bay	22.4	15.9	31.0	18.8	12.9	26.7	14.3	9.3	21.5	15.3	9.7	23.2	^	^	^
Bradford	^	^	^	^	^	^	^	^	^	^	^	^	^	^	^
Brevard	28.6	24.9	32.9	15.9	13.0	19.4	15.7	12.9	19.2	20.5	16.9	24.9	8.0	5.1	12.4
Broward	20.5	18.6	22.6	14.6	13.0	16.4	17.6	15.8	19.6	15.7	13.8	17.9	7.9	6.2	10.0
Calhoun	^	^	^	^	^	^	^	^	^	^	^	^	^	^	^
Charlotte	20.1	15.3	27.7	21.6	15.8	30.2	16.4	11.4	24.3	7.0	4.0	13.7	^	^	^
Citrus	15.4	10.3	24.0	18.5	12.5	28.0	15.2	9.8	24.3	12.3	7.4	21.2	^	^	^
Clay	17.4	11.1	26.1	16.0	10.4	23.8	11.5	6.6	18.7	18.9	12.5	27.7	^	^	^
Collier	21.9	18.0	26.9	14.8	11.3	19.3	16.6	12.9	21.4	20.6	16.2	26.1	10.3	5.6	17.9
Columbia	18.3	9.4	32.9	17.4	8.7	32.0	^	^	^	22.7	12.0	40.1	^	^	^
Miami-Dade	16.4	14.9	18.0	15.6	14.1	17.3	17.2	15.6	18.9	11.3	9.9	12.9	12.0	10.1	14.0
DeSoto	^	^	^	^	^	^	^	^	^	^	^	^	^	^	^
Dixie	^	^	^	^	^	^	^	^	^	^	^	^	^	^	^
Duval	21.3	18.1	24.9	19.1	16.1	22.4	15.9	13.2	19.0	15.4	12.4	18.9	9.0	6.3	12.3
Escambia	19.5	15.0	25.0	21.5	16.8	27.3	19.3	14.8	24.8	16.1	11.6	22.0	7.3	3.6	13.3
Flagler	19.8	12.6	34.1	17.3	9.6	32.7	19.3	10.3	36.3	14.3	5.8	32.7	^	^	^
Franklin	^	^	^	^	^	^	^	^	^	^	^	^	^	^	^
Gadsden	22.8	11.4	41.5	29.3	16.0	49.9	^	^	^	^	^	^	^	^	^
Gilchrist	^	^	^	^	^	^	^	^	^	^	^	^	^	^	^
Glades	^	^	^	^	^	^	^	^	^	^	^	^	^	^	^
Gulf	^	^	^	^	^	^	^	^	^	^	^	^	^	^	^
Hamilton	^	^	^	^	^	^	^	^	^	^	^	^	^	^	^
Hardee	^	^	^	^	^	^	^	^	^	^	^	^	^	^	^
Hendry	^	^	^	^	^	^	^	^	^	^	^	^	^	^	^
Hernando	27.3	21.1	36.1	21.6	14.8	31.3	15.0	10.5	22.3	16.2	10.6	25.1	18.8	8.8	36.3
Highlands	16.6	11.9	25.6	24.0	16.1	36.5	14.7	8.9	25.1	11.9	6.4	23.1	^	^	^
Hillsborough	19.7	17.1	22.5	15.5	13.3	18.0	16.4	14.1	19.0	18.8	16.2	21.8	9.5	7.2	12.4
Holmes	^	^	^	^	^	^	^	^	^	^	^	^	^	^	^
Indian River	18.0	13.0	25.6	15.4	10.0	23.7	16.4	10.4	25.5	22.0	14.7	32.8	^	^	^
Jackson	^	^	^	^	^	^	^	^	^	22.0	10.5	43.6	^	^	^
Jefferson	^	^	^	^	^	^	^	^	^	^	^	^	^	^	^
Lafayette	^	^	^	^	^	^	^	^	^	^	^	^	^	^	^
Lake	26.4	21.7	32.4	22.7	17.9	29.0	22.3	17.5	28.5	21.3	16.4	27.7	10.1	4.9	18.9
Lee	18.9	16.0	22.3	18.1	15.0	21.8	16.7	13.7	20.3	21.3	17.6	25.6	9.6	5.9	15.0
Leon	12.5	8.0	18.7	14.8	9.9	21.3	16.6	11.3	23.6	13.8	8.7	21.1	^	^	^
Levy	^	^	^	33.5	18.8	58.1	^	^	^	^	^	^	^	^	^
Liberty	^	^	^	^	^	^	^	^	^	^	^	^	^	^	^
Madison	^	^	^	^	^	^	^	^	^	^	^	^	^	^	^
Manatee	19.1	15.4	23.8	15.1	11.6	19.8	16.1	12.4	20.8	7.7	5.1	11.6	7.8	3.8	14.8
Marion	19.8	15.9	24.7	16.3	12.4	21.5	15.1	11.5	20.0	13.8	10.1	18.9	^	^	^
Martin	21.0	15.9	28.6	20.1	13.9	29.0	12.3	8.1	19.2	26.0	18.7	36.4	^	^	^
Monroe	14.2	7.5	26.2	25.0	16.5	38.0	14.7	7.7	26.8	21.4	13.3	34.7	^	^	^
Nassau	14.5	6.9	28.1	18.6	9.8	33.1	17.6	9.2	31.7	17.3	8.4	32.7	^	^	^
Okaloosa	33.3	25.2	43.2	15.7	10.6	22.8	19.6	13.6	27.7	17.7	12.0	25.4	^	^	^
Okeechobee	23.6	11.9	44.1	25.4	13.4	46.2	24.0	11.3	46.2	^	^	^	^	^	^
Orange	19.7	16.8	23.0	18.6	15.9	21.7	16.2	13.7	19.1	16.2	13.5	19.4	10.1	7.5	13.3
Osceola	15.4	10.5	21.8	12.5	8.2	18.3	16.0	11.1	22.4	14.9	10.1	21.3	10.0	4.9	18.1
Palm Beach	25.6	23.4	27.9	18.5	16.4	20.8	19.2	17.1	21.5	24.0	21.5	26.8	8.3	6.2	11.1
Pasco	23.4	19.9	27.7	19.2	15.6	23.8	14.9	11.8	18.9	16.9	13.1	21.7	8.7	5.1	14.4
Pinellas	22.7	20.3	25.3	20.3	17.8	23.0	13.6	11.6	15.8	16.2	13.9	18.9	9.6	7.1	12.9
Polk	21.4	18.1	25.2	15.6	12.7	19.1	19.0	15.8	22.7	24.0	20.0	28.8	11.9	7.9	17.3
Putnam	16.2	9.4	27.8	21.5	13.4	34.3	17.8	10.6	29.6	17.3	8.4	32.8	^	^	^
Saint Johns	19.6	13.7	27.9	17.6	12.0	25.6	17.4	11.8	25.5	18.3	12.3	26.9	^	^	^
Saint Lucie	17.0	12.8	22.8	15.4	11.2	21.1	16.1	11.5	22.2	17.2	12.1	24.4	9.8	4.8	18.3
Santa Rosa	28.0	19.5	39.7	33.6	24.5	45.6	11.3	6.2	19.5	17.0	10.5	26.6	^	^	^
Sarasota	23.2	19.7	27.6	18.4	14.7	23.2	18.8	15.0	23.7	18.6	14.5	24.1	4.7	2.3	9.9
Seminole	22.8	18.2	28.4	11.5	8.4	15.5	17.0	13.1	21.9	16.7	12.7	21.6	8.2	4.8	13.2
Sumter	18.1	11.3	31.5	13.0	6.9	26.2	19.4	11.2	34.5	13.3	5.4	30.4	^	^	^
Suwannee	22.6	11.0	44.0	^	^	^	30.4	16.3	54.3	^	^	^	^	^	^
Taylor	^	^	^	^	^	^	^	^	^	^	^	^	^	^	^
Union	^	^	^	92.1	49.5	172.6	^	^	^	^	^	^	^	^	^
Volusia	17.2	14.4	20.7	18.7	15.5	22.7	17.4	14.3	21.2	15.9	12.7	20.0	9.6	6.0	14.8
Wakulla	^	^	^	^	^	^	^	^	^	^	^	^	^	^	^
Walton	^	^	^	^	^	^	^	^	^	^	^	^	^	^	^
Washington	^	^	^	^	^	^	^	^	^	^	^	^	^	^	^

(1) Rates are expressed as number of cases per 100,000 population per year, adjusted to the 2000 U.S. standard population.

^ Statistics are not displayed for cells with fewer than 10 cases.

Source of data: Florida Cancer Data System

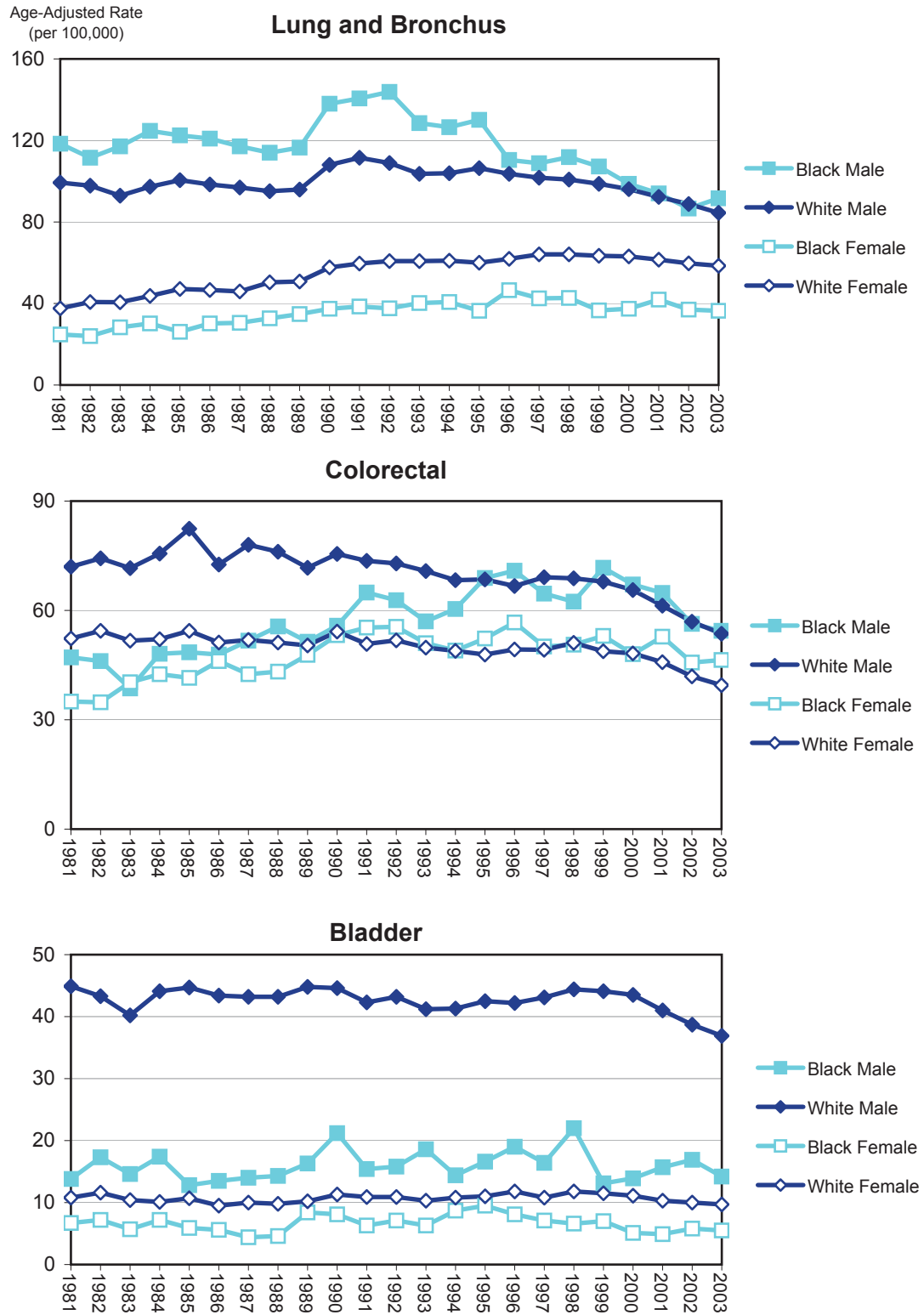
**Figure 1. New Cases and Age-Adjusted Incidence Rates for All Cancers by Sex and Race, Florida, 1981-2003**



Source of data: Florida Cancer Data System

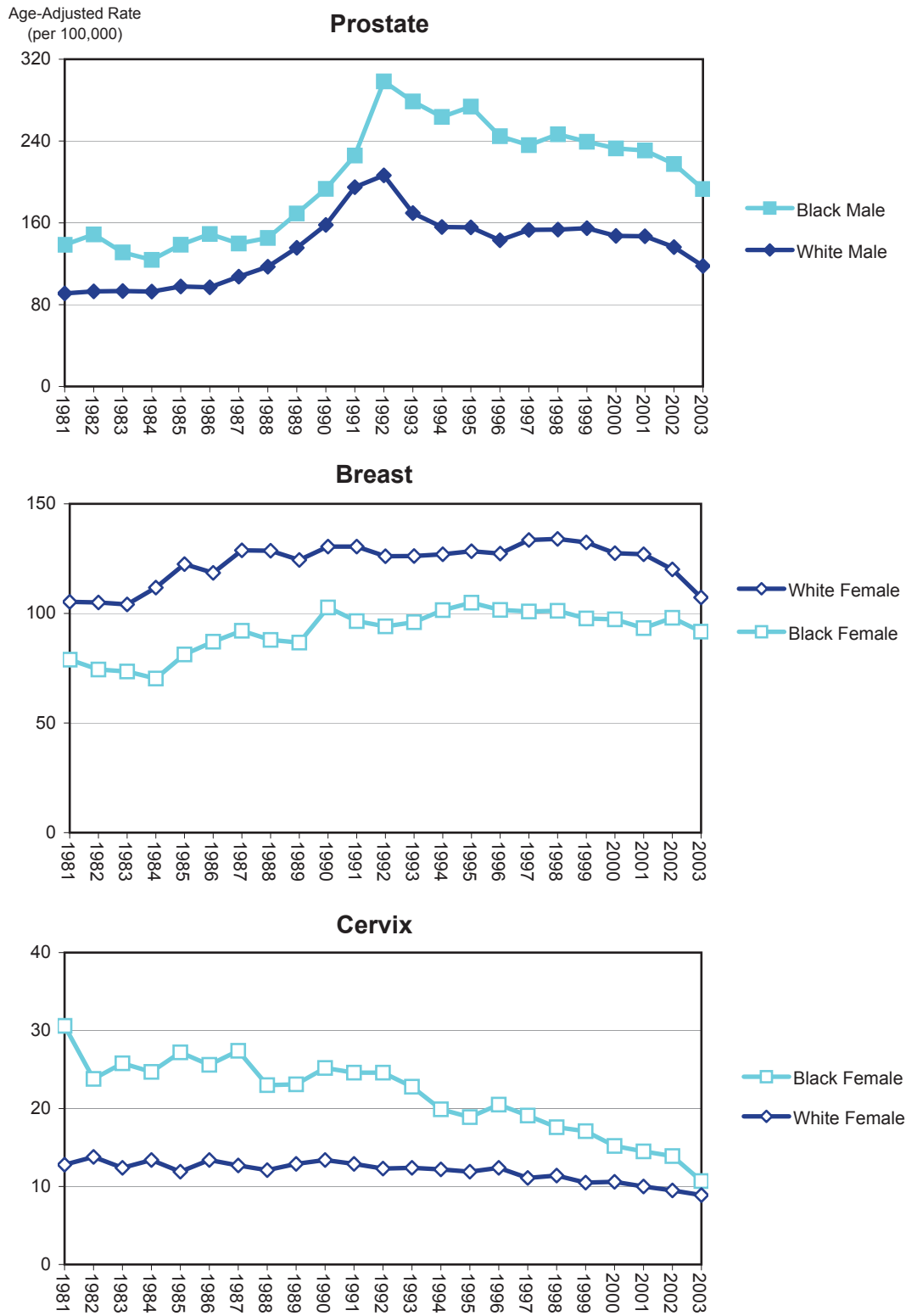


**Figure 2.1 Age-Adjusted Incidence Rates by Sex and Race, Florida, 1981-2003**



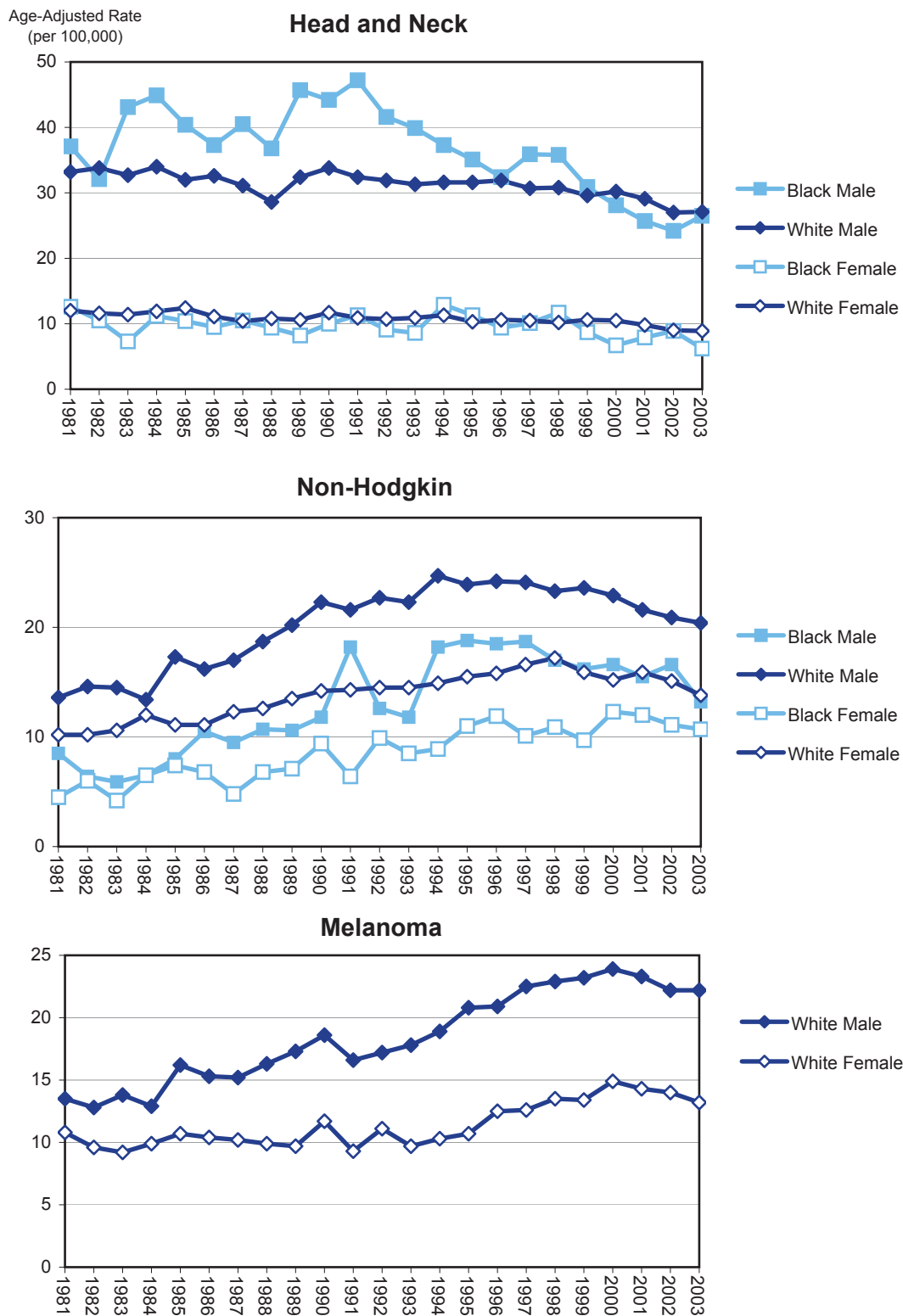
Source of data: Florida Cancer Data System

**Figure 2.2 Age-Adjusted Incidence Rates by Sex and Race, Florida, 1981-2003**



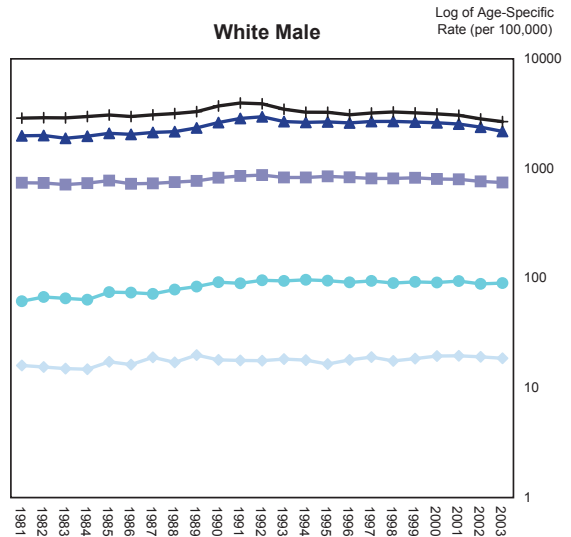
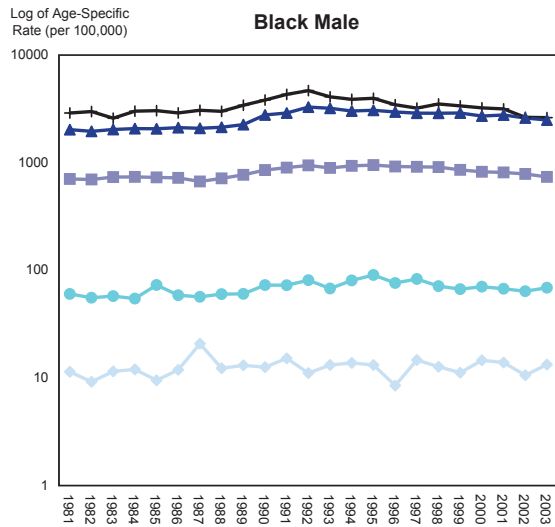
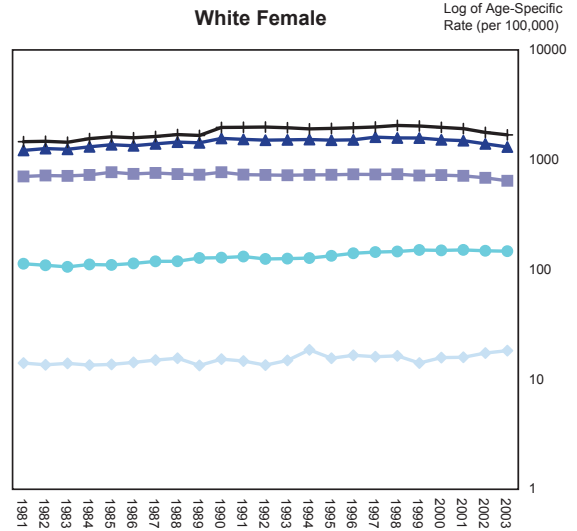
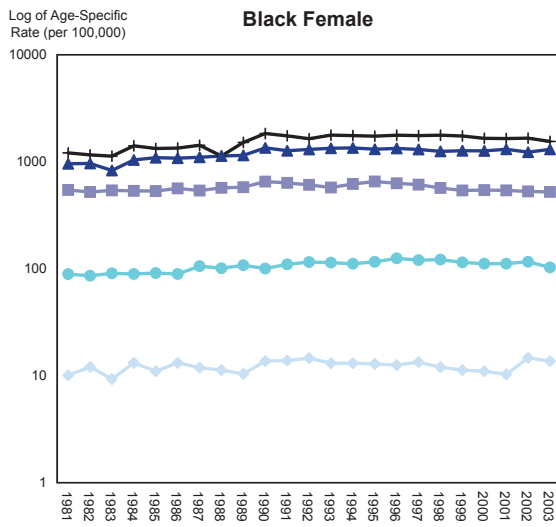
Source of data: Florida Cancer Data System

**Figure 2.3 Age-Adjusted Incidence Rates by Sex and Race, Florida, 1981-2003**



Source of data: Florida Cancer Data System

**Figure 4. Age-Specific Incidence Rates for All Cancers by Sex, Race, and Age Group, Florida, 1981-2003**



Source of data: Florida Cancer Data System