

## Florida Arbovirus Surveillance

### Week 19: May 9-15, 2010

Arbovirus surveillance in Florida includes endemic viruses West Nile virus (WNV), Eastern equine encephalitis virus (EEEV), St. Louis encephalitis virus (SLEV), and Highlands J virus (HJV) and exotic viruses such as Dengue virus (DENV) and California encephalitis group viruses (CEV). During the period May 9-15, 2010, the following arboviral activity was recorded in Florida:

**DENV activity:** No locally-acquired cases of dengue were reported this week. In 2010, there has been one locally-acquired case reported from Key West (Monroe County).

**EEEV activity:** No EEEV activity was reported this week. In 2010, positive samples from one horse, nine sentinel chickens, ten live wild birds, and two mosquito pools have been received from seven of Florida's 67 counties.

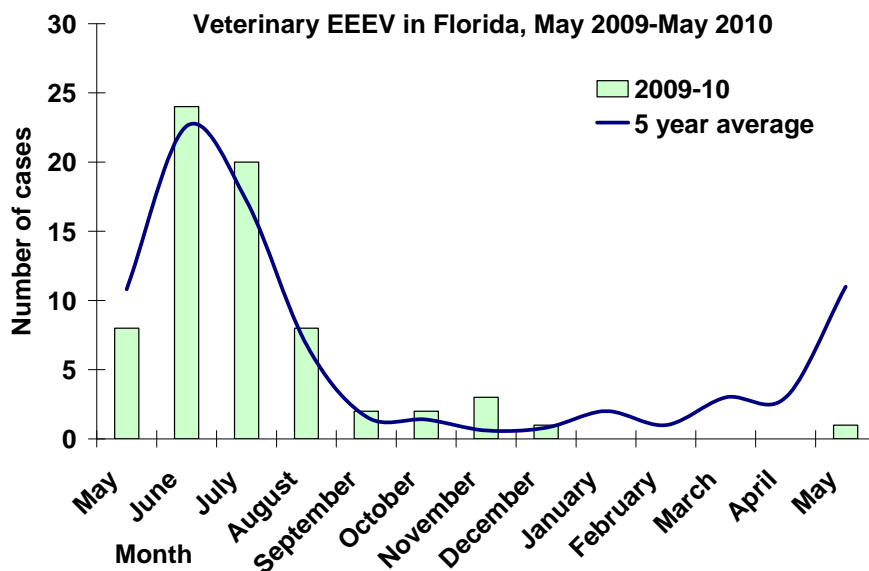
**WNV activity:** Six sentinel chickens from Hillsborough, Lee, and Walton counties tested positive for antibodies to WNV. In 2010, positive samples from 35 sentinel chickens have been received from five counties.

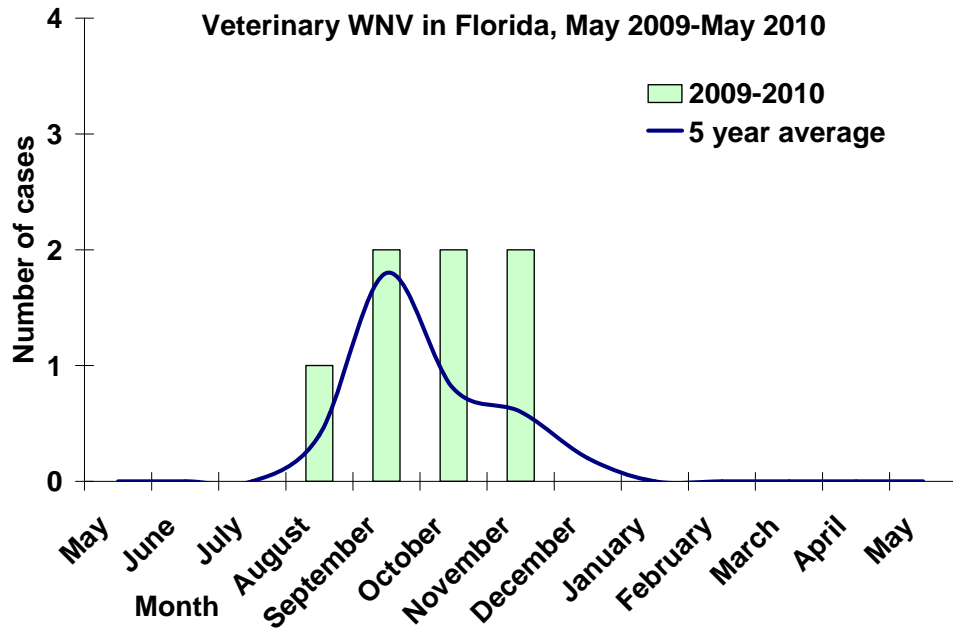
**HJV activity:** Two sentinel chickens from Pinellas and St. Johns counties tested positive for antibodies to HJV. In 2010, positive samples from four sentinel chickens have been received from three counties.

**Advisories/Alerts:** Monroe County is currently under a mosquito-borne disease advisory. No other counties are currently under mosquito-borne disease advisory or alert.

## Veterinary Cases

No positive horses were reported this week.



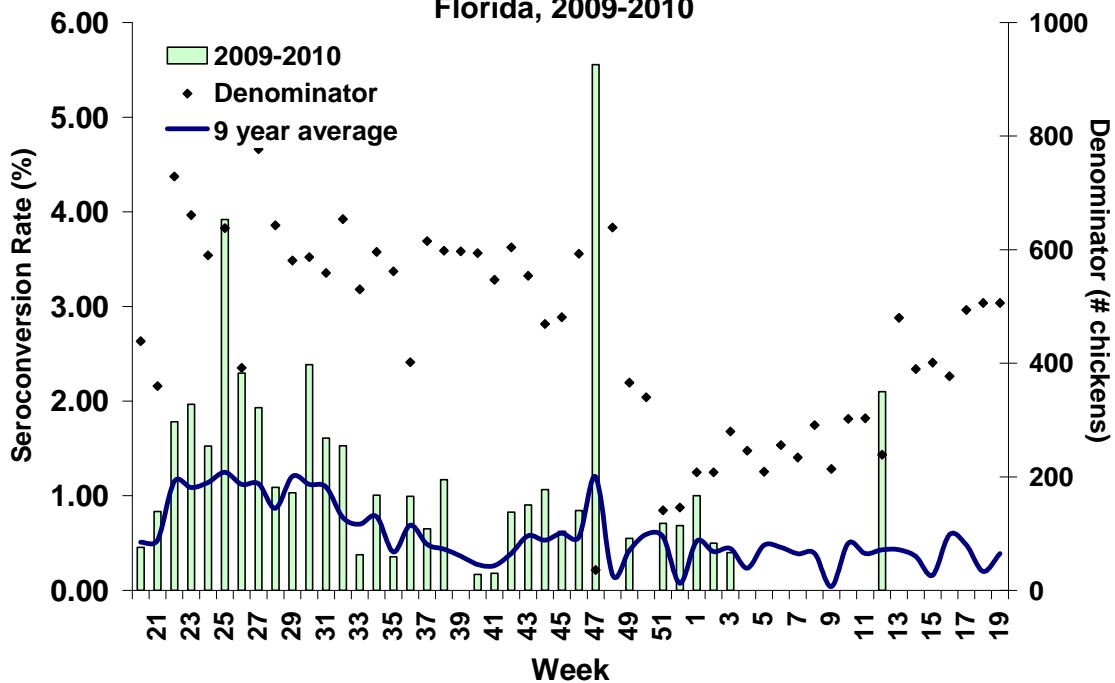


### Sentinel Chickens

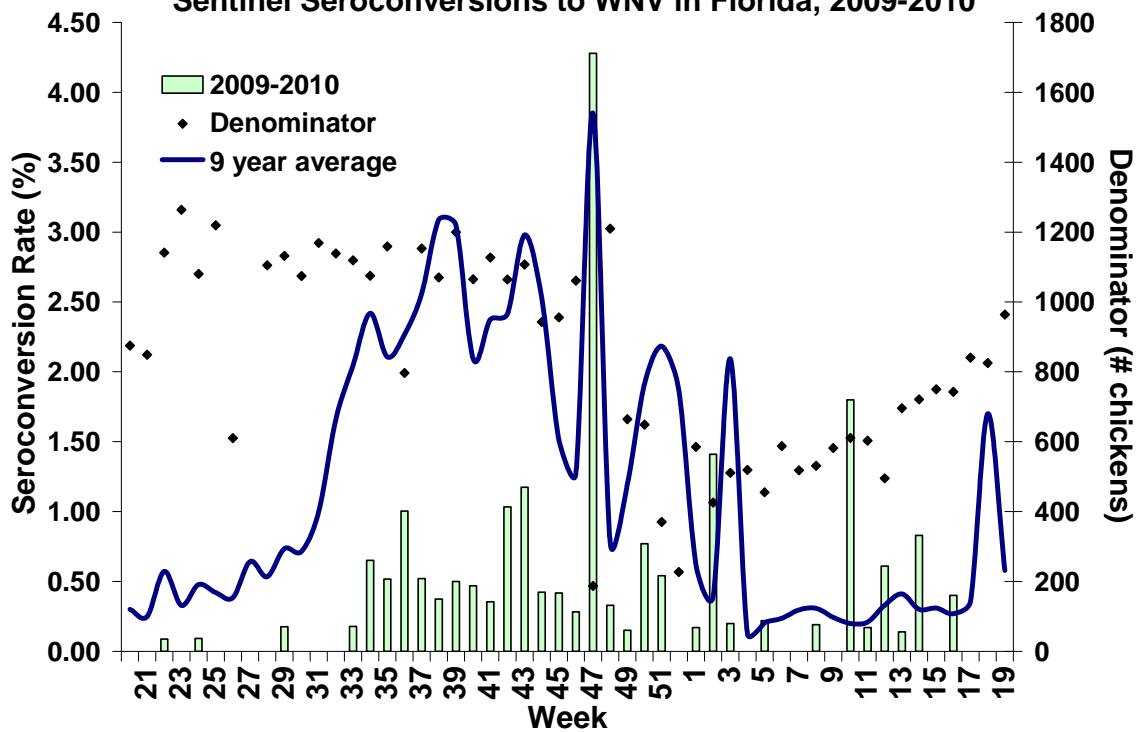
There were six seroconversions to WNV in sentinel chickens from Hillsborough, Lee, and Walton counties and two to HJV in Pinellas and St. Johns counties. Seroconversion rates are calculated by week and include previously reported results.

County	Collection Date	Seroconversion Rates (%)				County Totals	
		SLEV	WNV	EEEV	HJV	Week	YTD
Hillsborough	04/20/10		2.6			2 WNV	12 WNV
Lee	04/20/10		1.8			1 WNV	2 WNV
Walton (North)	04/07/10		14.3			6 WNV	16 WNV, 4 EEE, 2 HJV
Pinellas	04/26/10				1.8	1 HJV	1HJV
St. Johns	04/26/10				1.7	1 HJV	1 HJV

**Sentinel Seroconversions to EEEV in North and Panhandle Florida, 2009-2010**



**Sentinel Seroconversions to WNV in Florida, 2009-2010**



## Live Wild Birds

No positive live wild birds were reported this week.

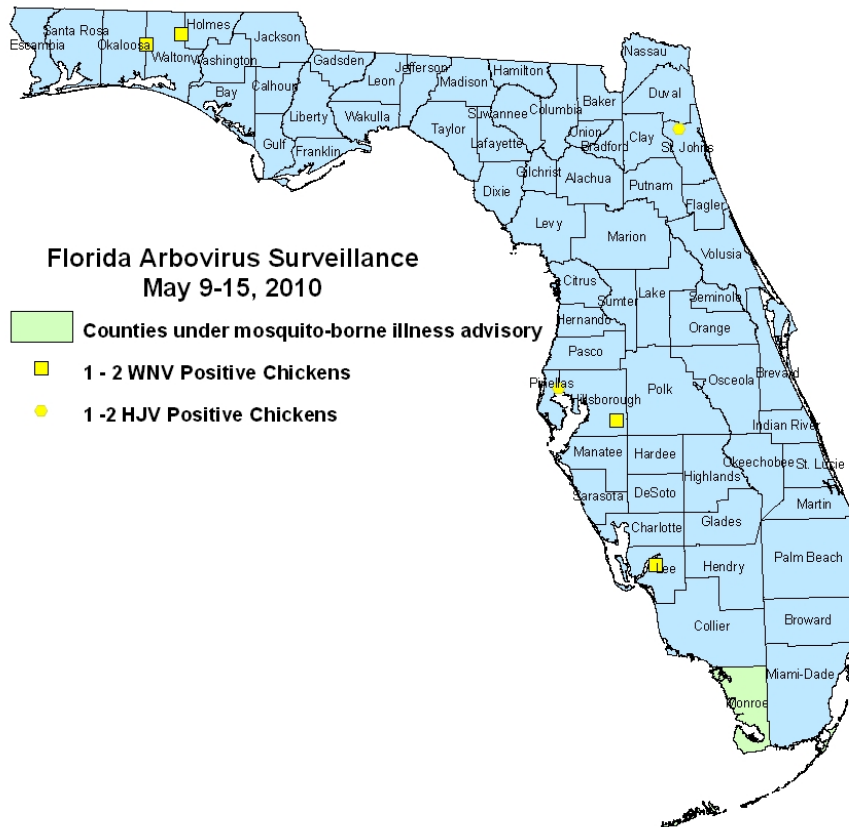
## Mosquito Pools

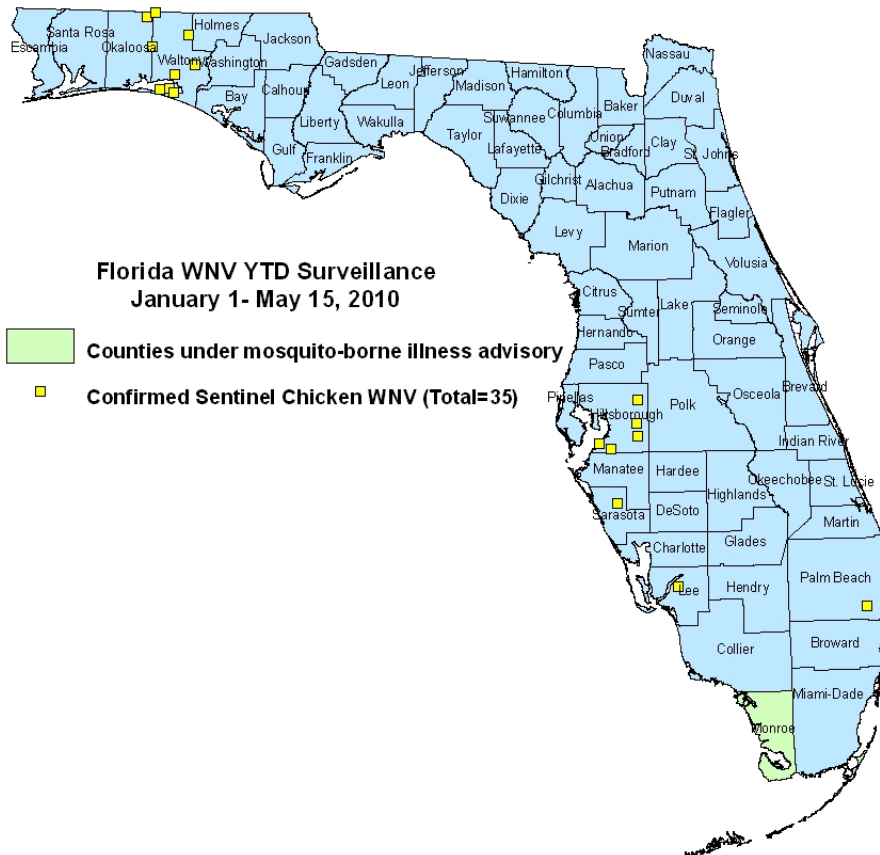
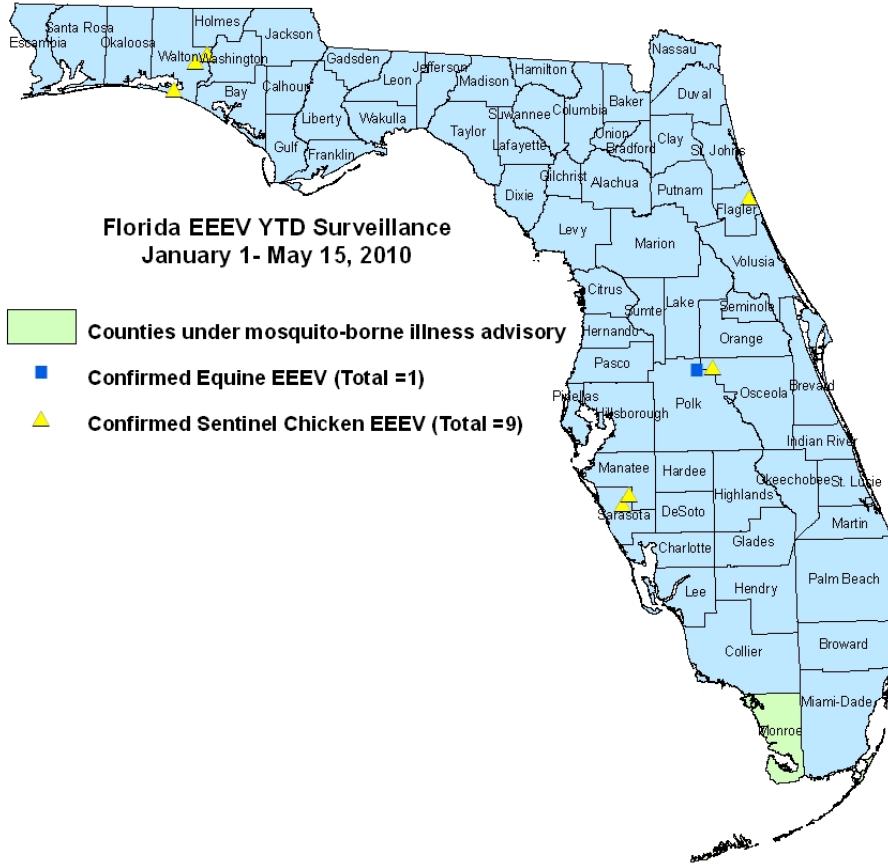
One of the two EEEV positive pools reported last week was negative on further testing.

## Dead Birds

The Fish and Wildlife Conservation Commission (FWC) collects reports of dead birds, which can be an indication of arbovirus circulation in an area. This week, four reports representing four dead birds were received from four counties. None were identified as crows, jays, or raptors. In 2010, 1113 reports representing a total of 365 dead birds (1 crow, 8 jays, 18 raptors, 339 others) have been received from 38 of Florida's 67 counties. Please note that FWC collects reports of birds that have died from a variety of causes, not only arboviruses. Dead birds should be reported to [www.myfwc.com/bird/](http://www.myfwc.com/bird/).

## Maps





## YTD Arbovirus Activity by County

County	Arbovirus Activity
Flagler	EEE : 1 sentinel (3/22) ; 1 mosquito pool ( <i>Culiseta melanura</i> 4/27)
Hillsborough	WNV : 12 sentinels (1/12, 1/19, 2/22, 3/9, 3/22, 4/20)
Lee	WNV: 2 sentinels (3/30, 4/20)
Monroe	DENV: 1 human (4/5)
Okaloosa	EEE : 6 live wild birds (1 house sparrow 1/4, 5 blue jay 1/27, 4/19, 4/21, 4/26)
Orange	EEE : 1 sentinel (1/7)
Palm Beach	WNV: 1 sentinel (3/15)
Pinellas	HJV: 1 sentinel (4/26)
Polk	EEE: 1 horse (4/28)
St. Johns	HJV: 1 sentinel (4/26)
Santa Rosa	EEE: 5 live wild birds (5 blue jays 2/2, 3/22, 4/13, 4/19)
Sarasota	EEE: 2 sentinels (1/5, 1/11) WNV : 1 sentinel (1/8)
Walton	EEE : 5 sentinels (1/19, 3/22) WNV : 19 sentinels (1/14, 2/4, 3/8, 3/12, 3/22, 4/7, 4/8) HJV : 2 sentinels (3/22)

## Acknowledgements and Data Sources

Contributors: Elizabeth Radke, MPH, Danielle Stanek, DVM, and Carina Blackmore, DVM, PhD.

For more surveillance information, please see the DOH website at:  
<http://www.doh.state.fl.us/Environment/medicine/arboviral/index.html>

Data is provided by county health departments, Department of Health Laboratories, Department of Agriculture and Consumer Services, mosquito control agencies, Florida Fish and Wildlife Conservation Commission, medical providers and veterinarians. Equine cases are determined by the Department of Agriculture and Consumer Services. Wild captured bird information is provided by the John A. Mulrennan Public Health Entomology Research and Education Center.