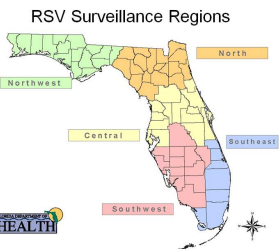
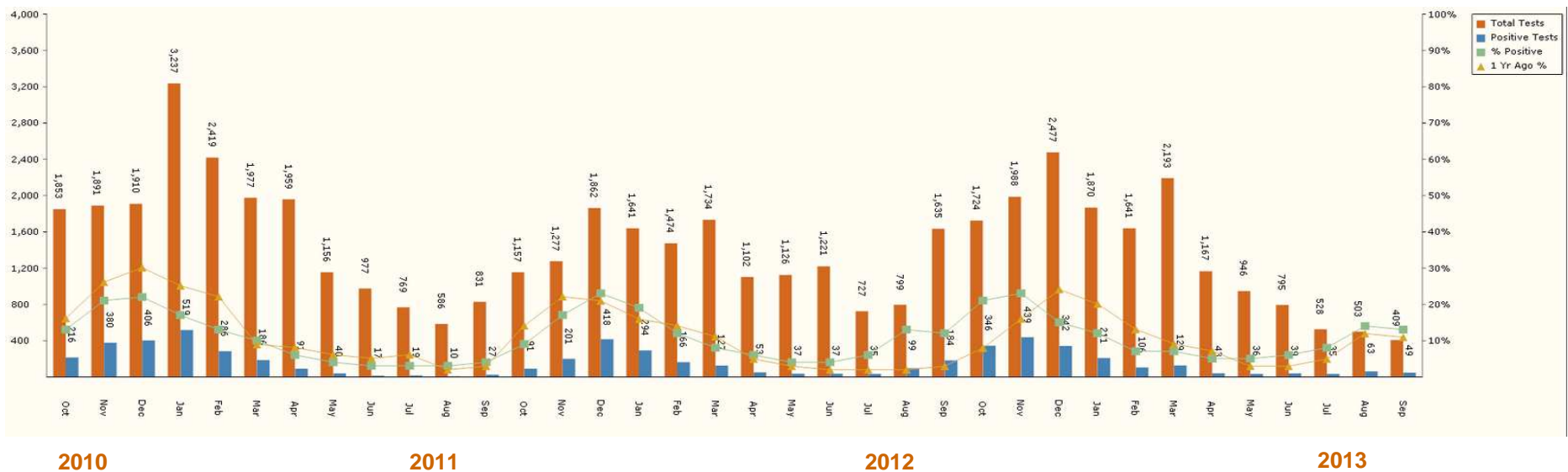




**Florida Department of Health - Bureau of Epidemiology  
Respiratory Syncytial Virus Surveillance Program  
Surveillance Data Summary**

**RSV Surveillance Data by Month  
Central Region  
September 27, 2010-September 27, 2013**



**Note:** Small numbers of providers reporting may make data unreliable. Numbers may change as more data becomes available.

[http://www.doh.state.fl.us/disease\\_ctrl/epi/rsv/rsv.htm](http://www.doh.state.fl.us/disease_ctrl/epi/rsv/rsv.htm)



# Florida Department of Health - Bureau of Epidemiology

## Respiratory Syncytial Virus Surveillance Program

### Surveillance Data Summary

**RSV Surveillance Data by Week**  
**Central region**  
**March 27, 2013– September 27, 2013**



**Note:** Small numbers of providers reporting may make data unreliable.  
 Numbers may change as more data becomes available.

[http://www.doh.state.fl.us/disease\\_ctrl/epi/rsv/rsv.htm](http://www.doh.state.fl.us/disease_ctrl/epi/rsv/rsv.htm)

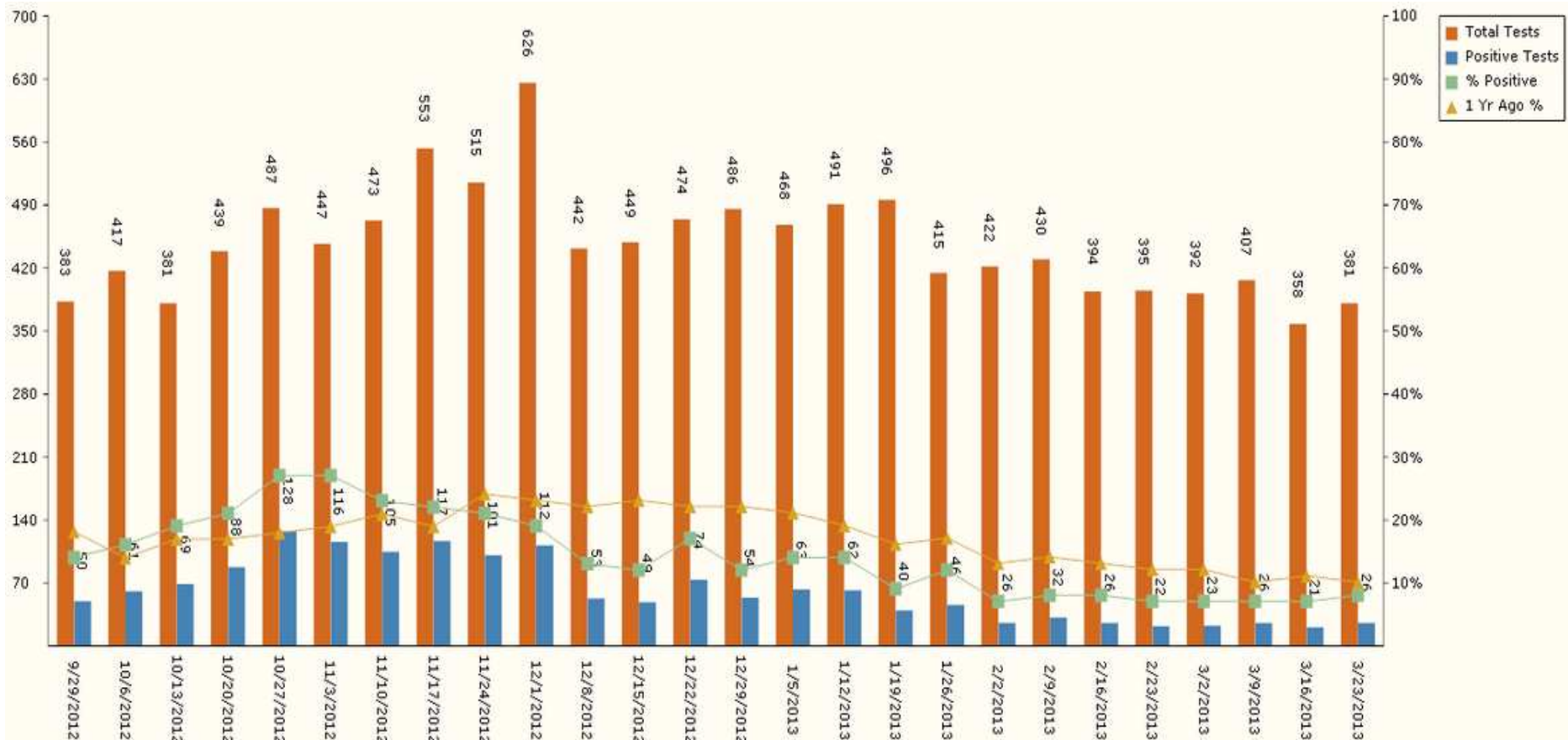


# Florida Department of Health - Bureau of Epidemiology

## Respiratory Syncytial Virus Surveillance Program

### Surveillance Data Summary

**RSV Surveillance Data by Week**  
**Central Region**  
**September 27, 2012– March 27, 2013**



**Note:** Small numbers of providers reporting may make data unreliable. Numbers may change as more data becomes available.

[http://www.doh.state.fl.us/disease\\_ctrl/epi/rsv/rsv.htm](http://www.doh.state.fl.us/disease_ctrl/epi/rsv/rsv.htm)



# Florida Department of Health - Bureau of Epidemiology

## Respiratory Syncytial Virus Surveillance Program

### Surveillance Data Summary

**RSV Surveillance Data by Month  
Central Region  
September 27, 2012 – September 27, 2013**

