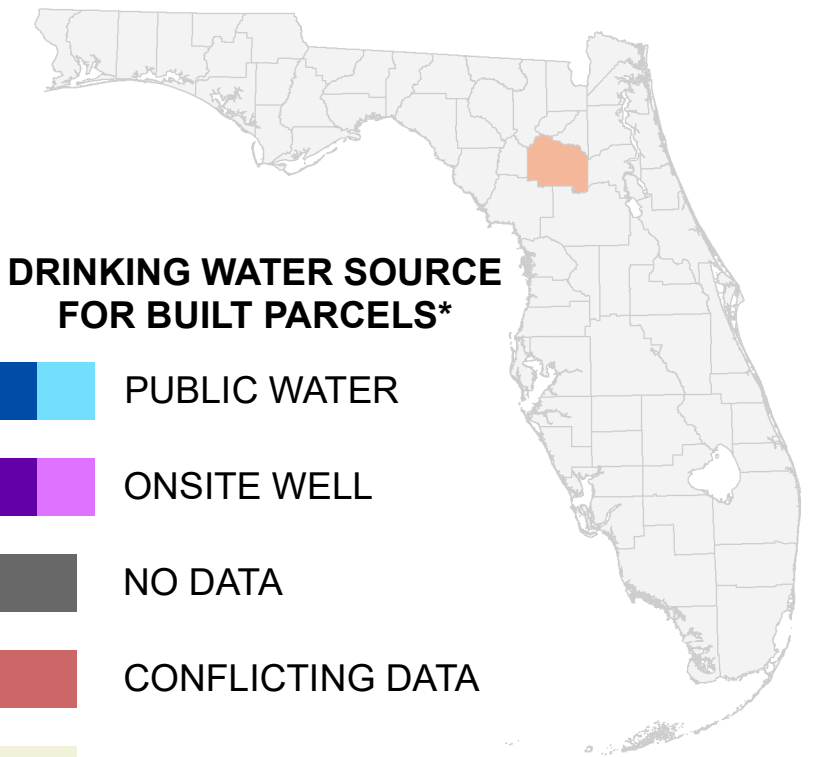


# Florida Water Management Inventory

## Alachua County Drinking Water 2022

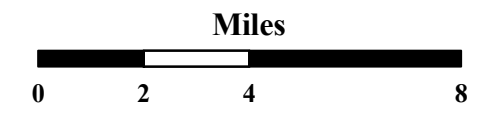


### DRINKING WATER SOURCE FOR BUILT PARCELS\*

- PUBLIC WATER
- ONSITE WELL
- NO DATA
- CONFLICTING DATA
- NOT BUILT

- Interstate
- US Highway
- State Road

\* Includes parcels with unknown Built status. Percentages do not include parcels where drinking water is not applicable.

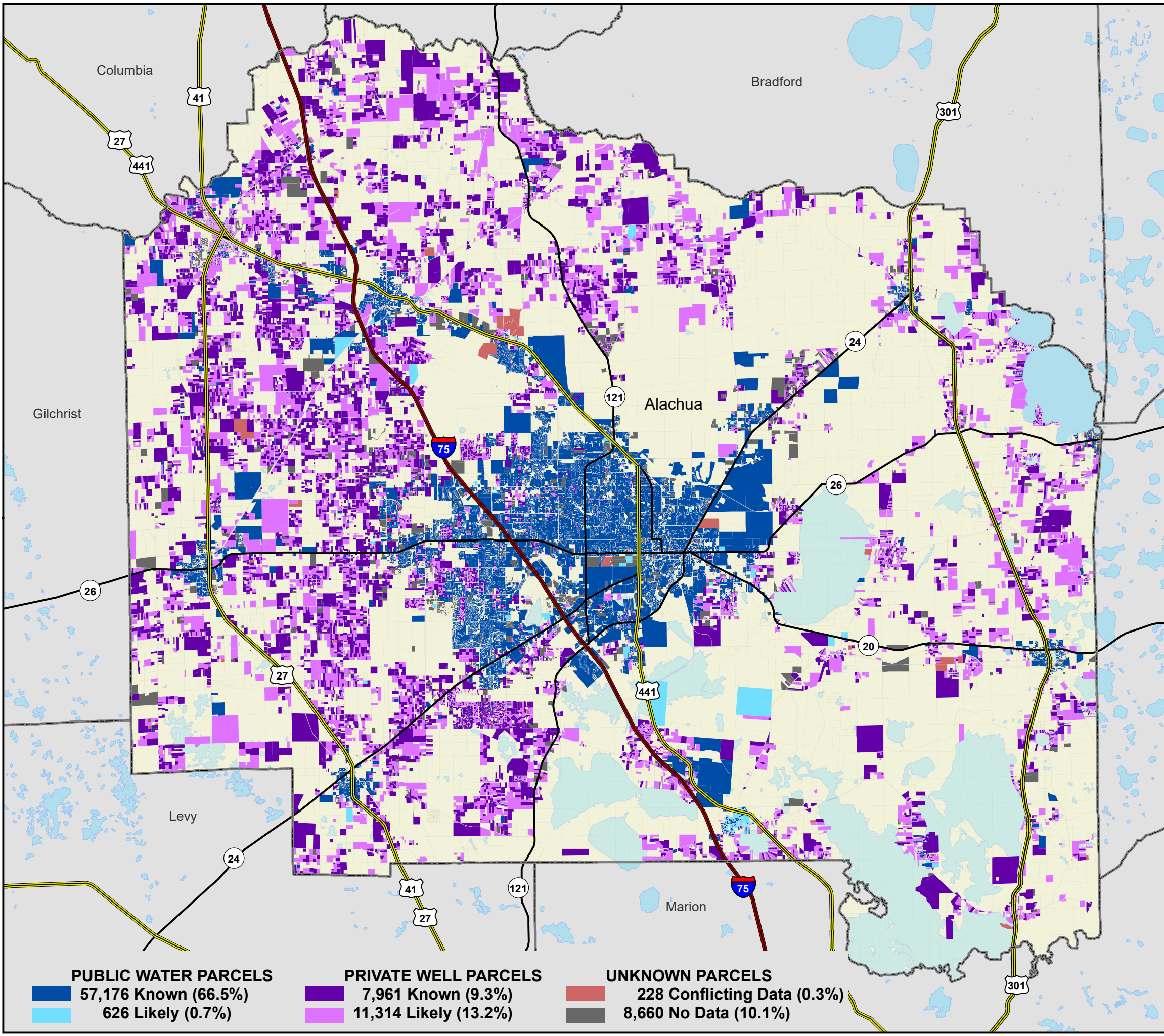


1:230,000  
Albers Equal Area NAD83 HARN

This map is based on sources of varied accuracy and scale provided by multiple organizations. FDOH assumes no liability for the use of this map and associated data.



26Apr2022



PUBLIC WATER PARCELS		PRIVATE WELL PARCELS		UNKNOWN PARCELS	
<span style="display: inline-block; width: 15px; height: 15px; background-color: #0070C0; border: 1px solid black;"></span>	57,176 Known (66.5%)	<span style="display: inline-block; width: 15px; height: 15px; background-color: #800080; border: 1px solid black;"></span>	7,961 Known (9.3%)	<span style="display: inline-block; width: 15px; height: 15px; background-color: #C0392B; border: 1px solid black;"></span>	228 Conflicting Data (0.3%)
<span style="display: inline-block; width: 15px; height: 15px; background-color: #00BFFF; border: 1px solid black;"></span>	626 Likely (0.7%)	<span style="display: inline-block; width: 15px; height: 15px; background-color: #E91E63; border: 1px solid black;"></span>	11,314 Likely (13.2%)	<span style="display: inline-block; width: 15px; height: 15px; background-color: #666666; border: 1px solid black;"></span>	8,660 No Data (10.1%)