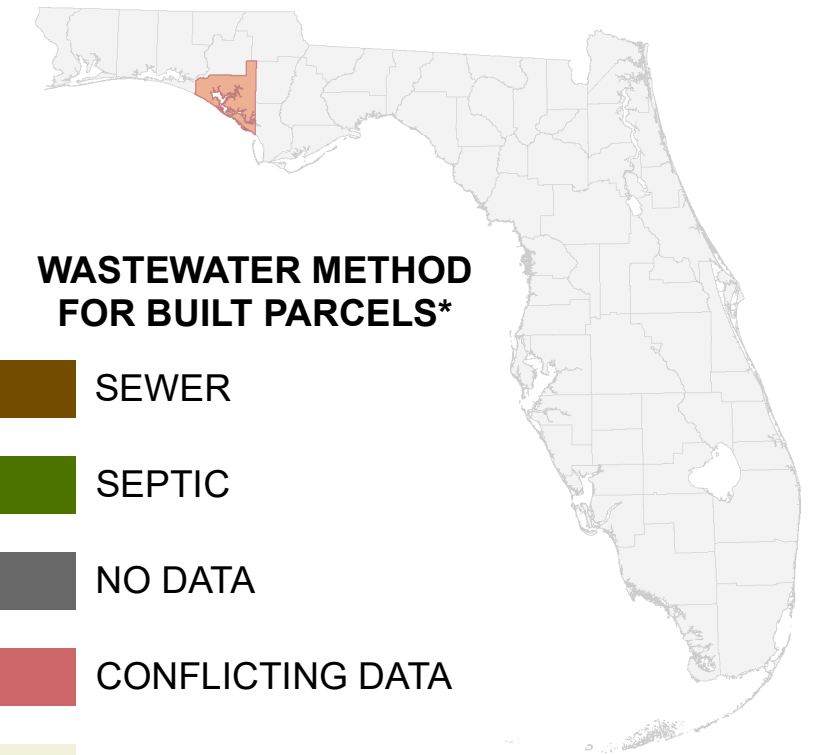


Florida Water Management Inventory

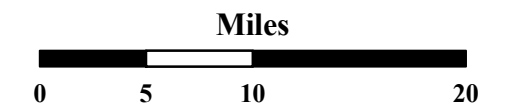
Bay County Wastewater 2021



WASTEWATER METHOD FOR BUILT PARCELS*

- SEWER
- SEPTIC
- NO DATA
- CONFLICTING DATA
- NOT BUILT

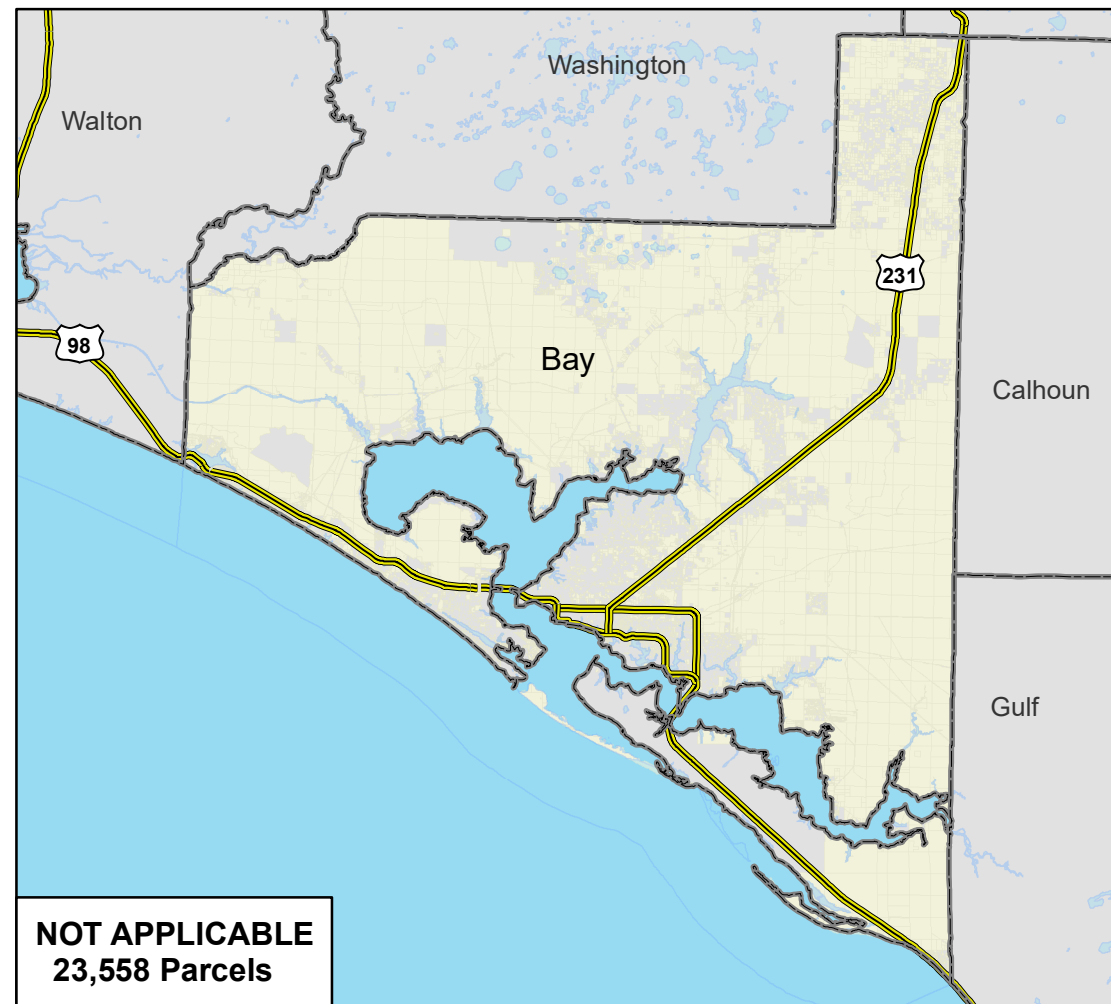
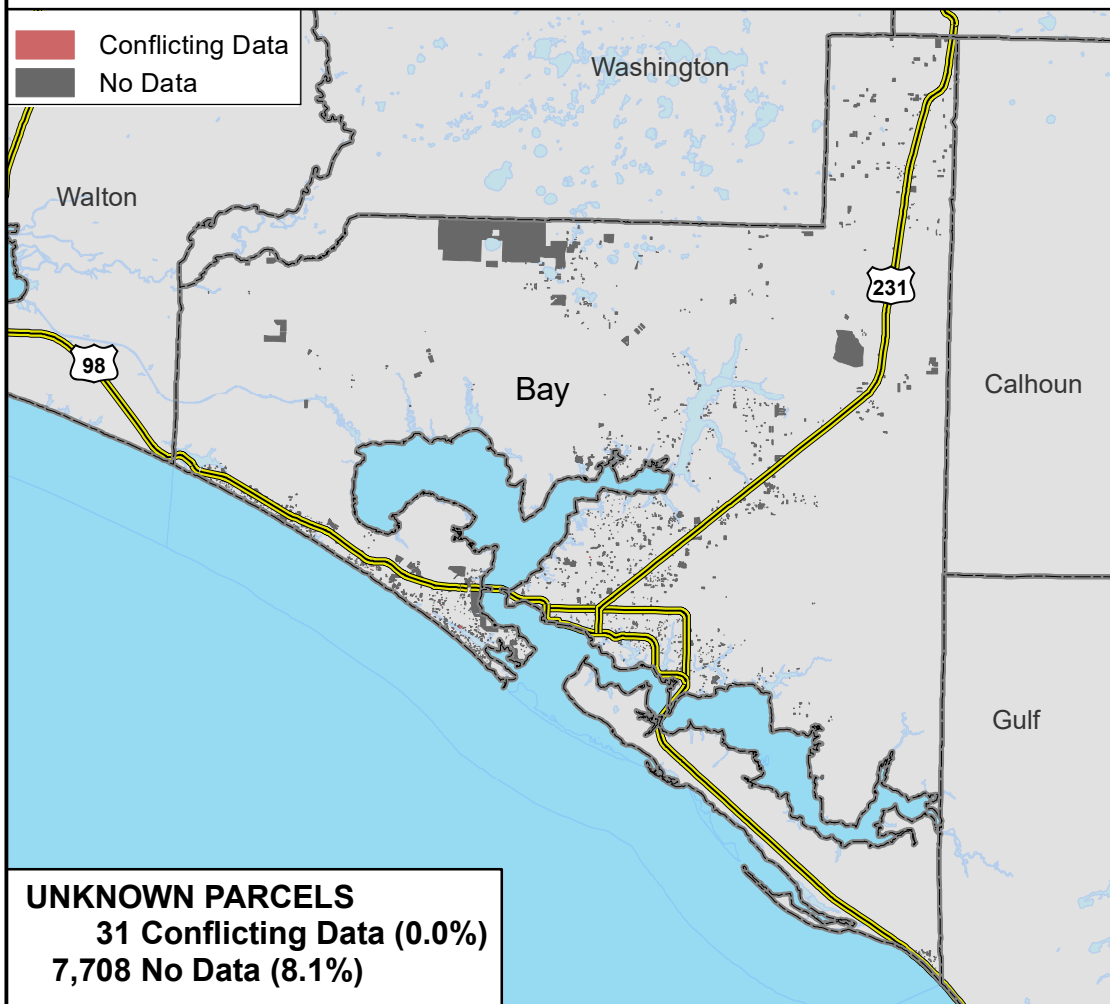
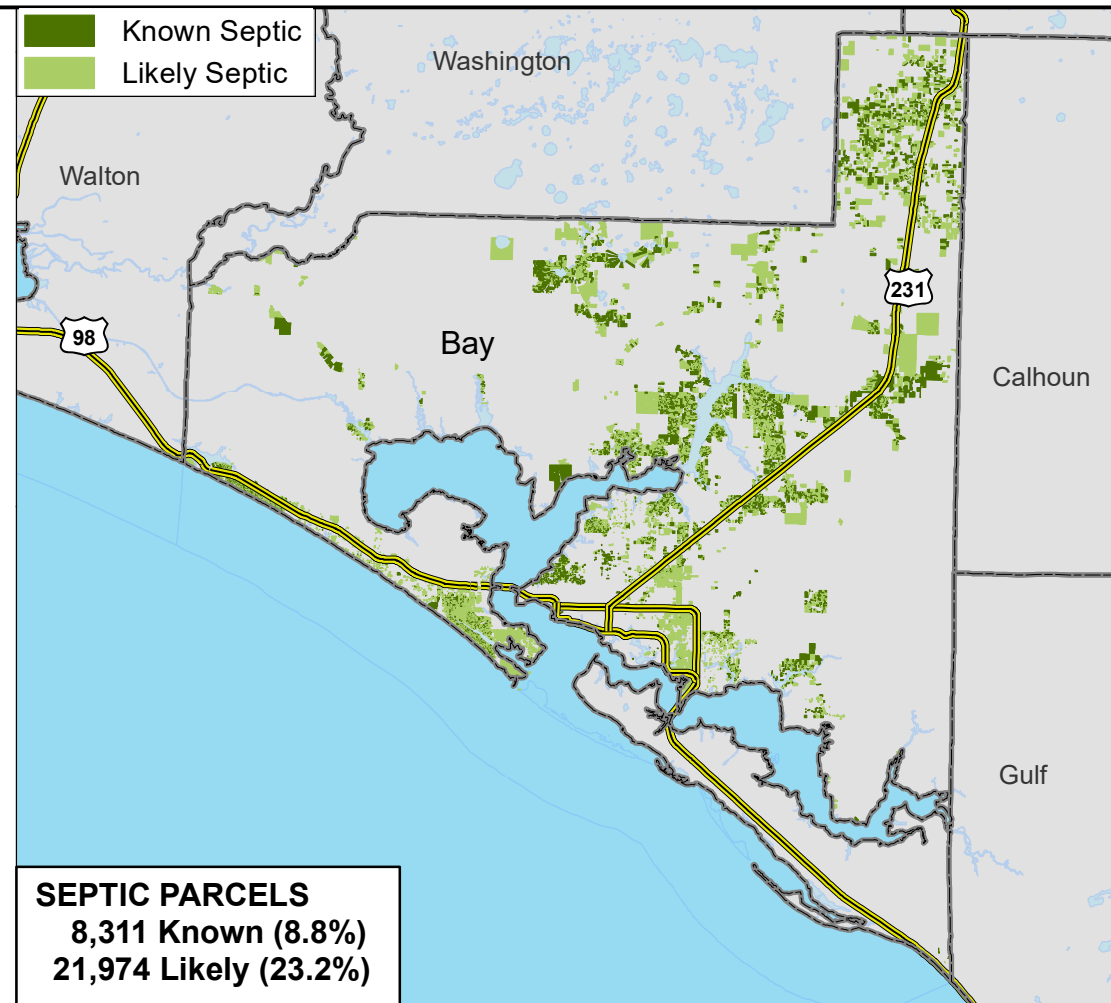
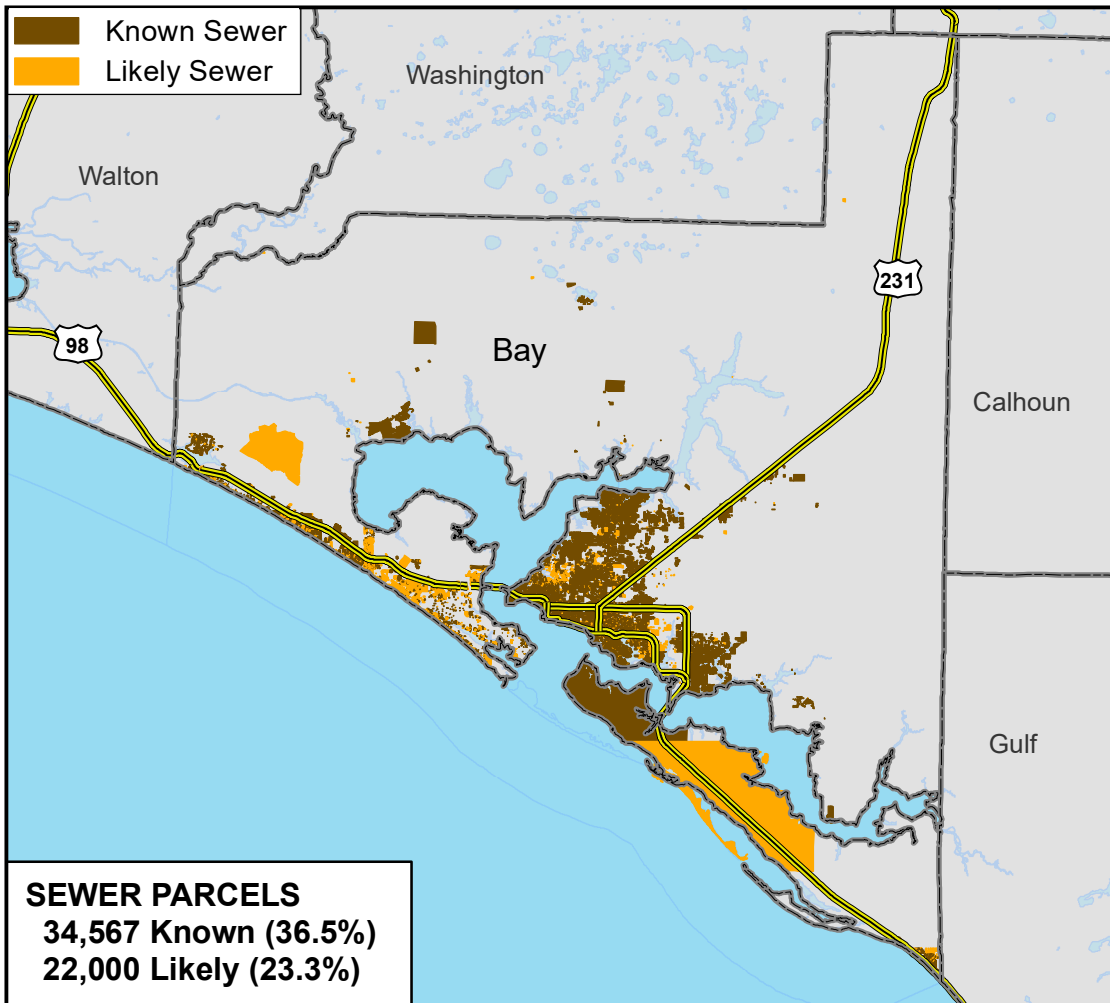
Interstate * Includes parcels with unknown Built status. Percentages do not include parcels where wastewater is not applicable.
 US Highway
 State Road



1:570,000
 Albers Equal Area NAD83 HARN



15Oct2021



This map is based on sources of varied accuracy and scale provided by multiple organizations. FDOH assumes no liability for the use of this map and associated data.