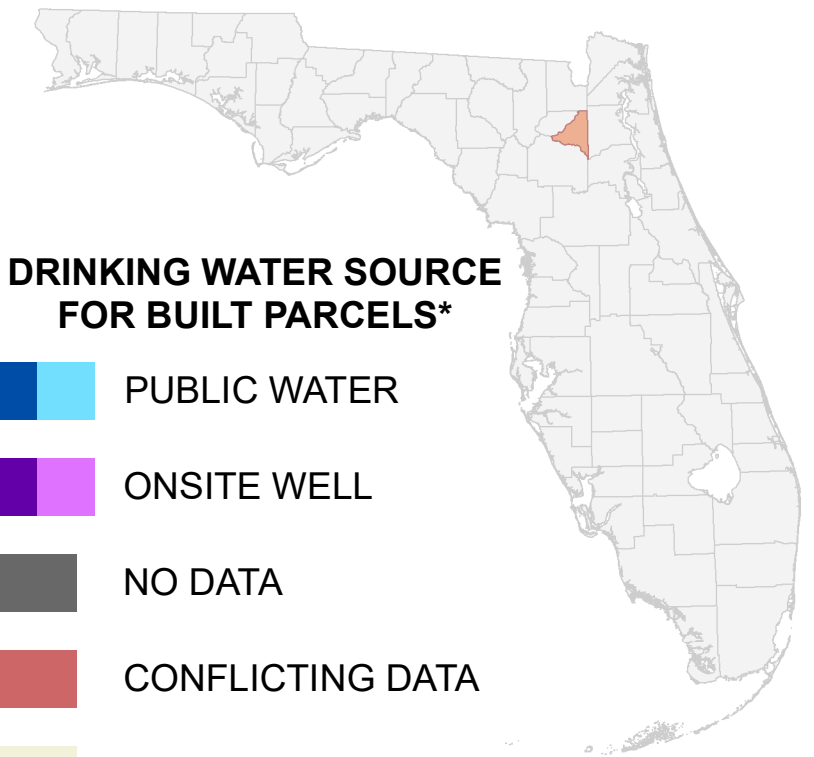


Florida Water Management Inventory

Bradford County Drinking Water 2022

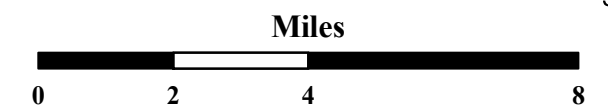


DRINKING WATER SOURCE FOR BUILT PARCELS*

- PUBLIC WATER
- ONSITE WELL
- NO DATA
- CONFLICTING DATA
- NOT BUILT

US Highway
 State Road

* Includes parcels with unknown Built status. Percentages do not include parcels where drinking water is not applicable.

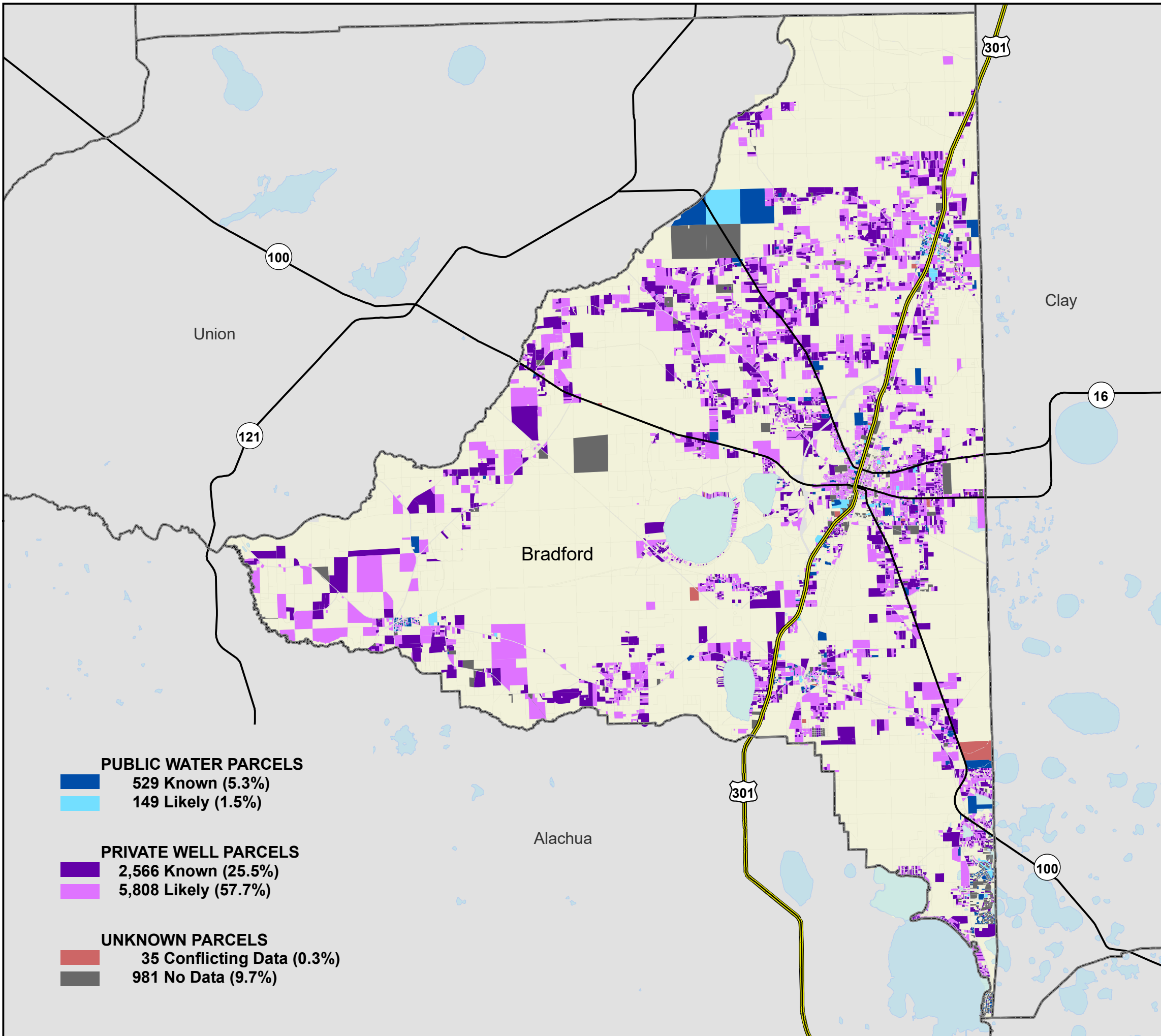


1:180,000
Albers Equal Area NAD83 HARN

This map is based on sources of varied accuracy and scale provided by multiple organizations. FDOH assumes no liability for the use of this map and associated data.



26Apr2022



PUBLIC WATER PARCELS	
	529 Known (5.3%)
	149 Likely (1.5%)
PRIVATE WELL PARCELS	
	2,566 Known (25.5%)
	5,808 Likely (57.7%)
UNKNOWN PARCELS	
	35 Conflicting Data (0.3%)
	981 No Data (9.7%)