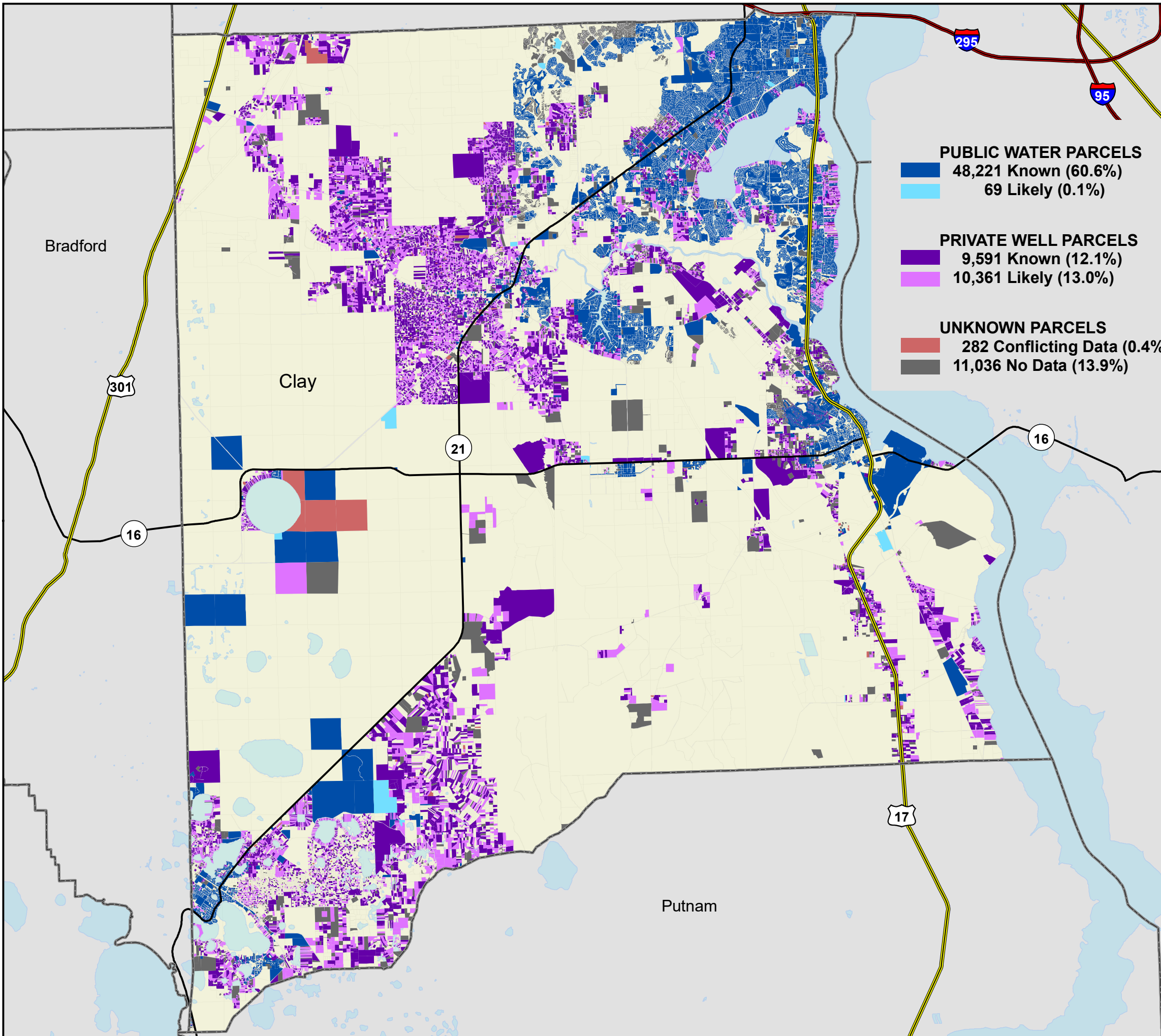


Florida Water Management Inventory

Clay County Drinking Water 2022



PUBLIC WATER PARCELS	
	48,221 Known (60.6%)
	69 Likely (0.1%)
PRIVATE WELL PARCELS	
	9,591 Known (12.1%)
	10,361 Likely (13.0%)
UNKNOWN PARCELS	
	282 Conflicting Data (0.4%)
	11,036 No Data (13.9%)

DRINKING WATER SOURCE FOR BUILT PARCELS*

	PUBLIC WATER
	ONSITE WELL
	NO DATA
	CONFLICTING DATA
	NOT BUILT

- Interstate
 - US Highway
 - State Road
- * Includes parcels with unknown Built status. Percentages do not include parcels where drinking water is not applicable.



1:200,000
Albers Equal Area NAD83 HARN



This map is based on sources of varied accuracy and scale provided by multiple organizations. FDOH assumes no liability for the use of this map and associated data.



14Jul2022