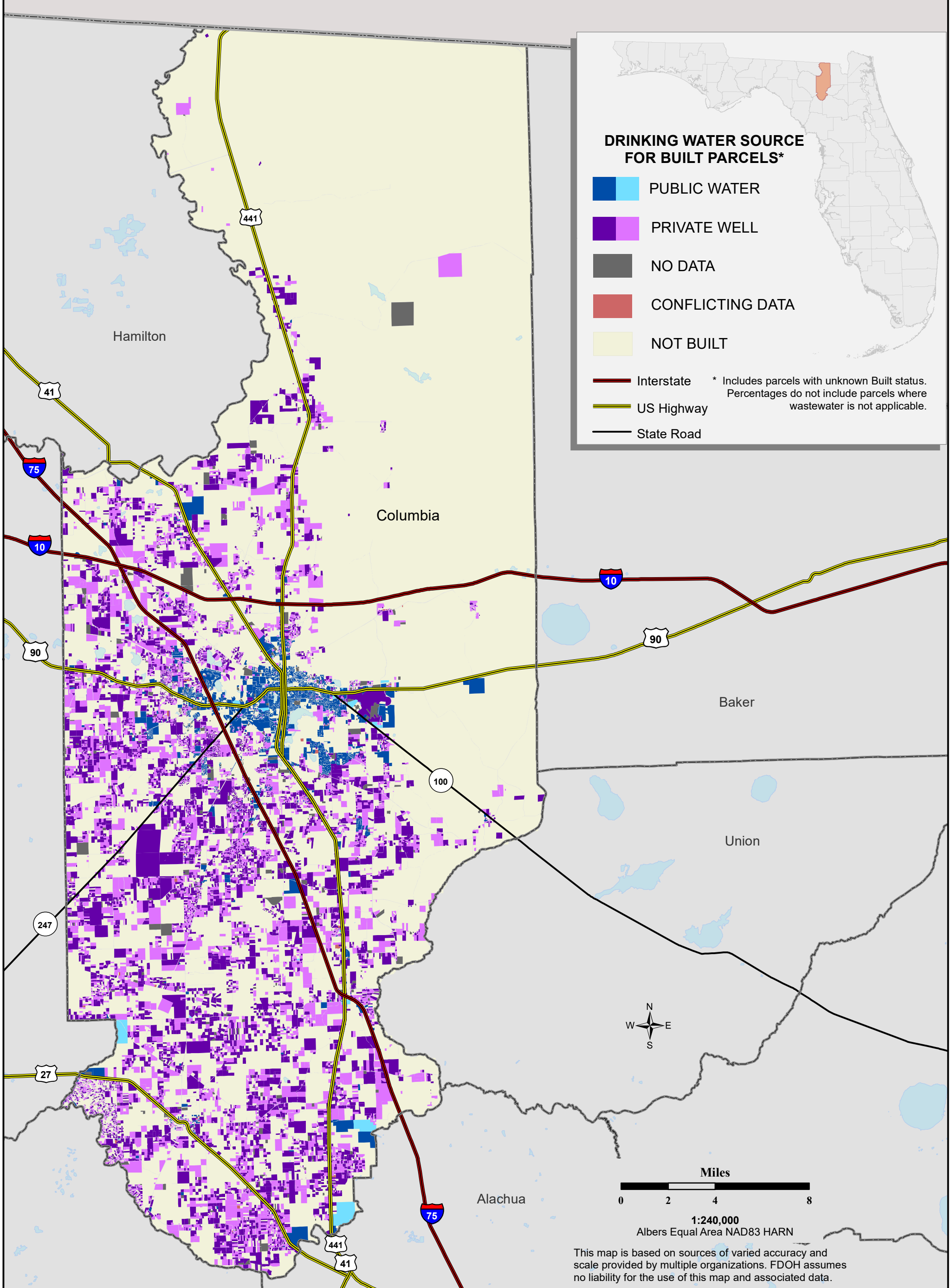


Florida Water Management Inventory

Columbia County Drinking Water 2022



DRINKING WATER SOURCE FOR BUILT PARCELS*

- PUBLIC WATER
- PRIVATE WELL
- NO DATA
- CONFLICTING DATA
- NOT BUILT

- Interstate
 - US Highway
 - State Road
- * Includes parcels with unknown Built status. Percentages do not include parcels where wastewater is not applicable.



1:240,000
Albers Equal Area NAD83 HARN

This map is based on sources of varied accuracy and scale provided by multiple organizations. FDOH assumes no liability for the use of this map and associated data.

<p>PUBLIC WATER PARCELS</p> <ul style="list-style-type: none"> 8,135 Known (32.4%) 59 Likely (0.2%) 	<p>PRIVATE WELL PARCELS</p> <ul style="list-style-type: none"> 7,108 Known (28.3%) 8,795 Likely (35.0%) 	<p>UNKNOWN PARCELS</p> <ul style="list-style-type: none"> 110 Conflicting Data (0.4%) 891 No Data (3.6%)
--	--	---

