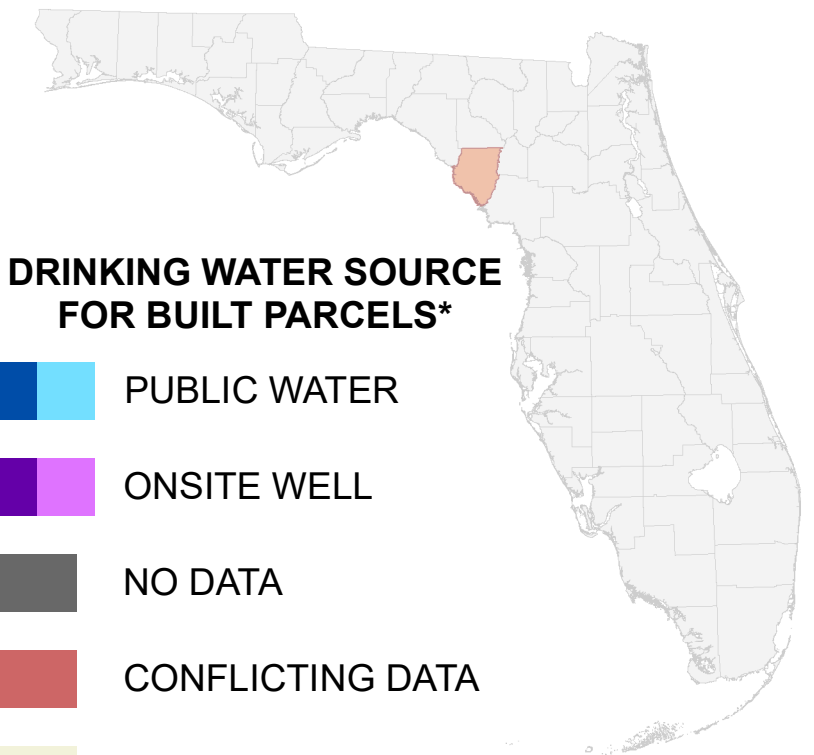


Florida Water Management Inventory

Dixie County Drinking Water 2022



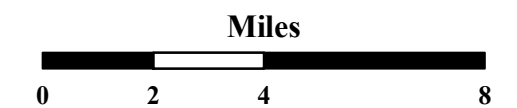
DRINKING WATER SOURCE FOR BUILT PARCELS*

- PUBLIC WATER
- ONSITE WELL
- NO DATA
- CONFLICTING DATA
- NOT BUILT

US Highway * Includes parcels with unknown Built status. Percentages do not include parcels where drinking water is not applicable.

State Road

County Road

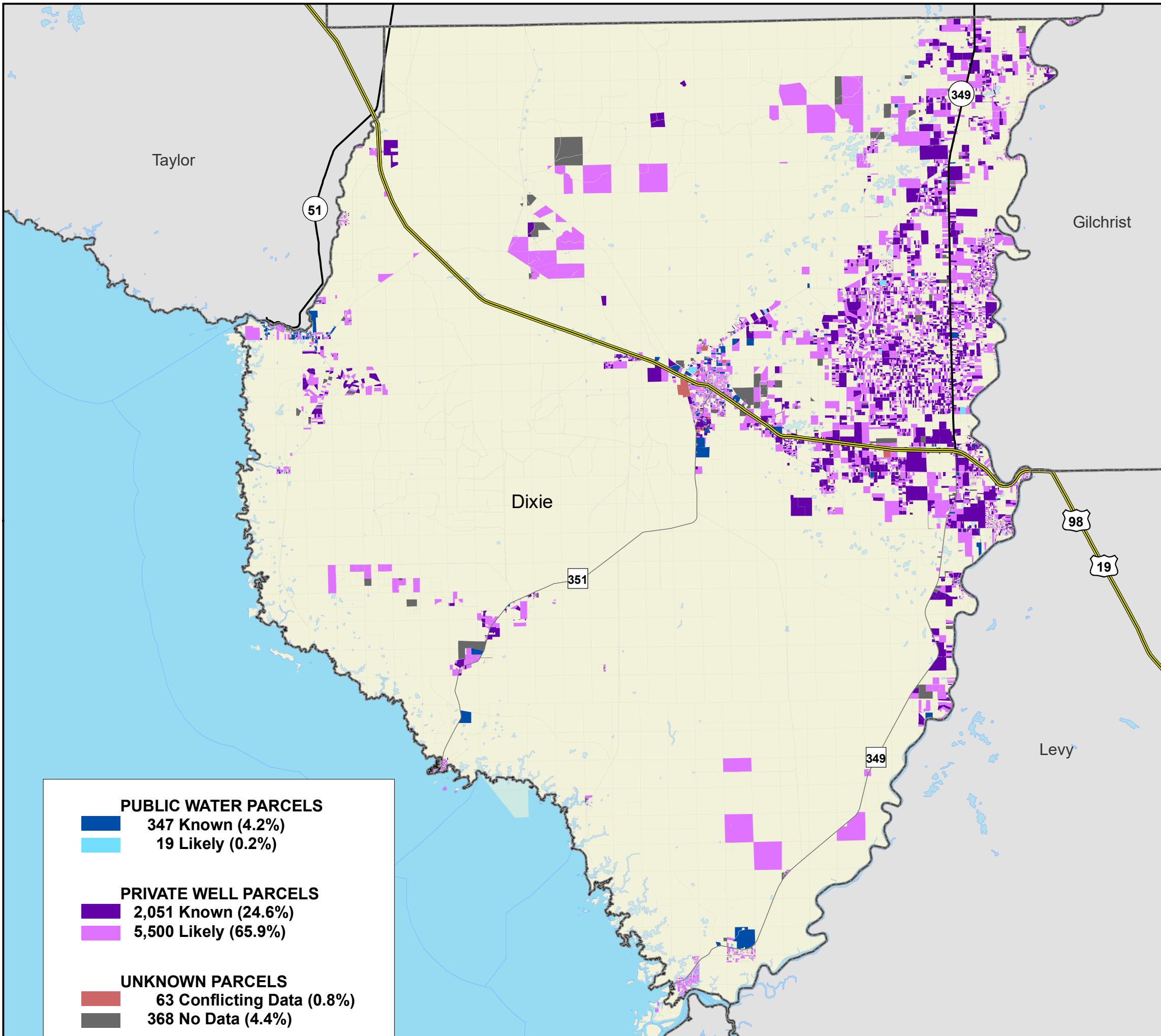


1:220,000
Albers Equal Area NAD83 HARN

This map is based on sources of varied accuracy and scale provided by multiple organizations. FDOH assumes no liability for the use of this map and associated data.



01Mar2022



PUBLIC WATER PARCELS	
	347 Known (4.2%)
	19 Likely (0.2%)
PRIVATE WELL PARCELS	
	2,051 Known (24.6%)
	5,500 Likely (65.9%)
UNKNOWN PARCELS	
	63 Conflicting Data (0.8%)
	368 No Data (4.4%)