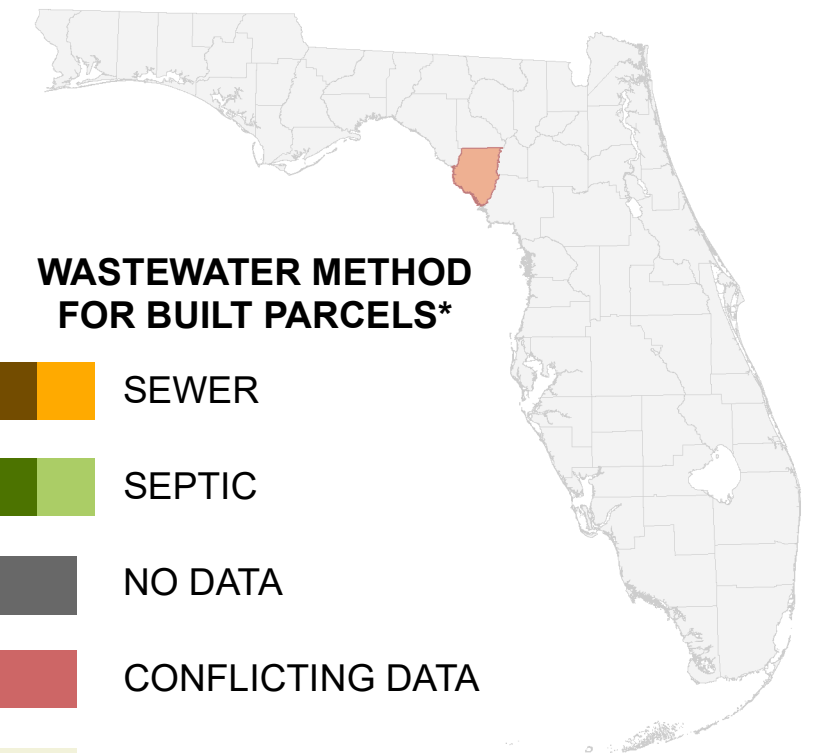




Florida Water Management Inventory

Dixie County Wastewater 2022



WASTEWATER METHOD FOR BUILT PARCELS*



 US Highway * Includes parcels with unknown Built status. Percentages do not include parcels where wastewater is not applicable.
 State Road

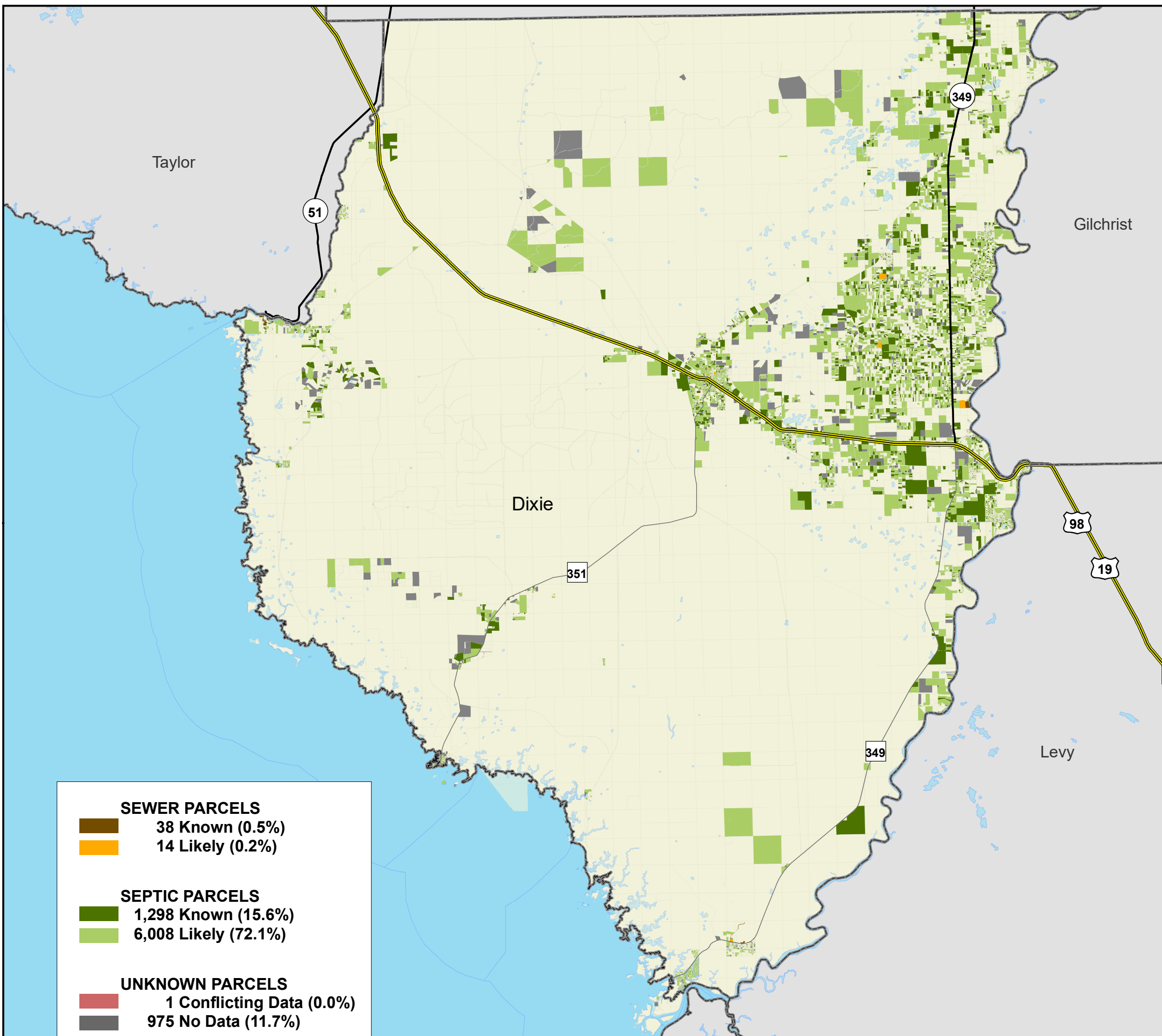


1:220,000
 Albers Equal Area NAD83 HARN

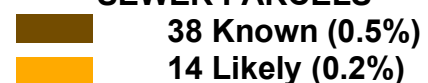
This map is based on sources of varied accuracy and scale provided by multiple organizations. FDOH assumes no liability for the use of this map and associated data.



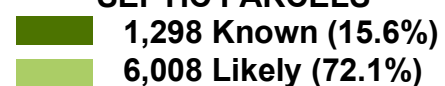
01Mar2022



SEWER PARCELS



SEPTIC PARCELS



UNKNOWN PARCELS

