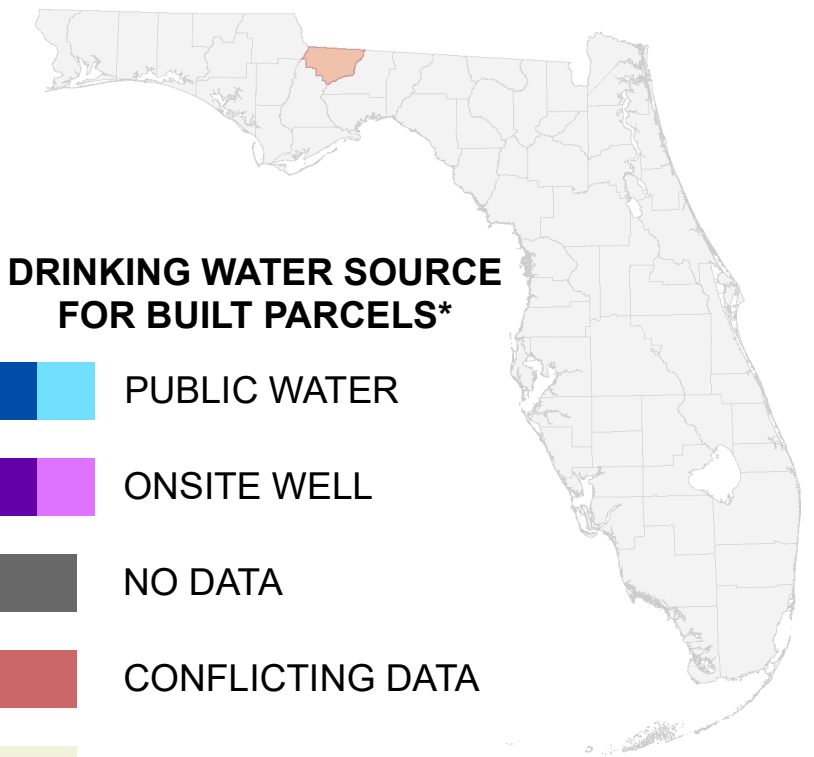


Florida Water Management Inventory

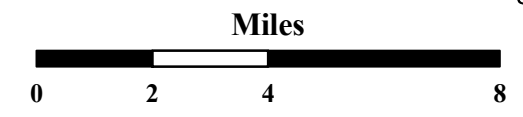
Gadsden County Drinking Water 2021



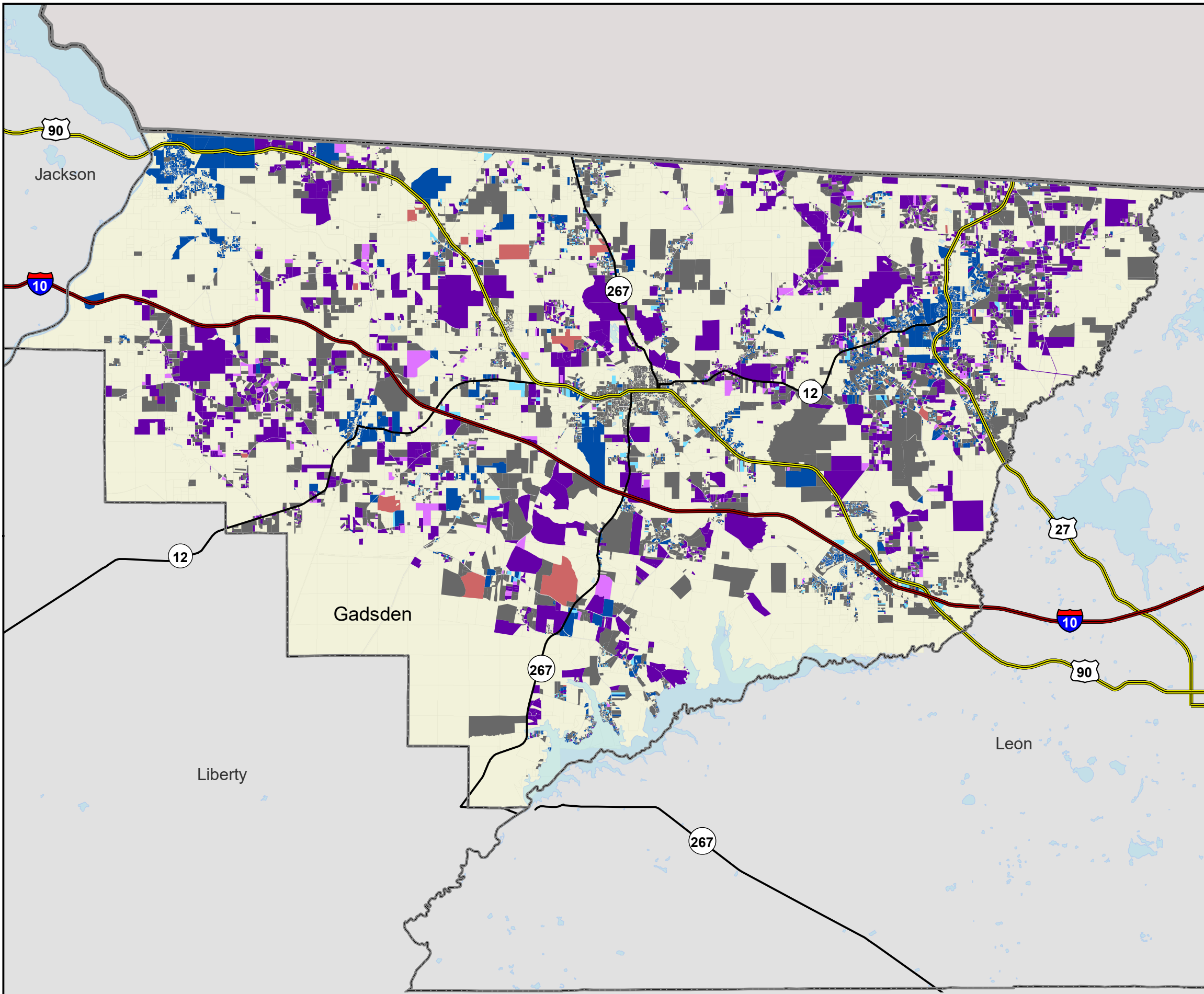
DRINKING WATER SOURCE FOR BUILT PARCELS*

- PUBLIC WATER
- ONSITE WELL
- NO DATA
- CONFLICTING DATA
- NOT BUILT

- Interstate
 - US Highway
 - State Road
- * Includes parcels with unknown Built status. Percentages do not include parcels where drinking water is not applicable.



1:210,000
Albers Equal Area NAD83 HARN



PUBLIC WATER PARCELS		PRIVATE WELL PARCELS		UNKNOWN PARCELS	
	4,549 Known (25.9%)		2,005 Known (11.4%)		61 Conflicting Data (0.3%)
	464 Likely (2.6%)		297 Likely (1.7%)		10,168 No Data (58.0%)

This map is based on sources of varied accuracy and scale provided by multiple organizations. FDOH assumes no liability for the use of this map and associated data.

