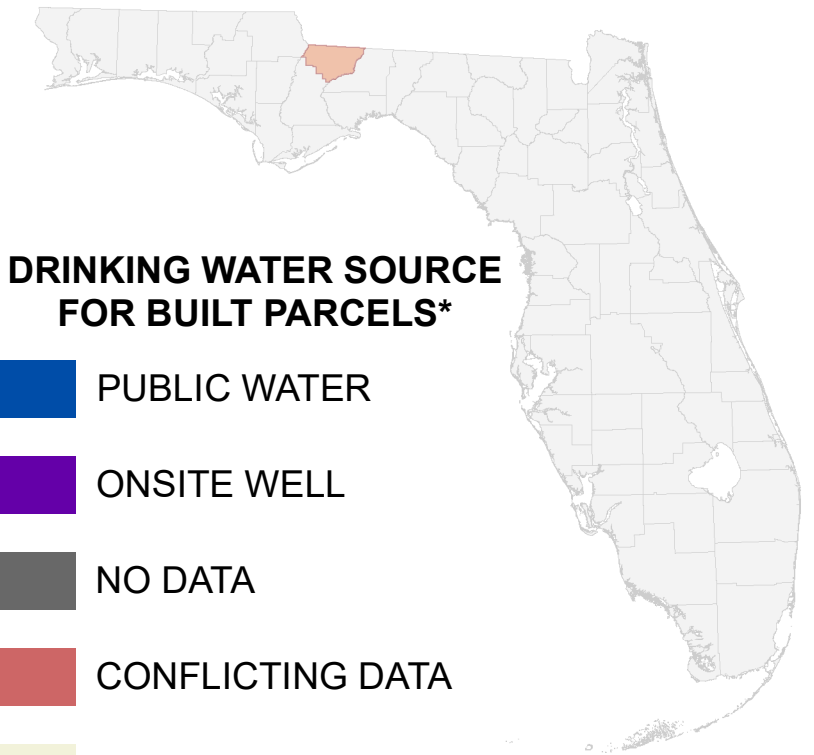


# Florida Water Management Inventory

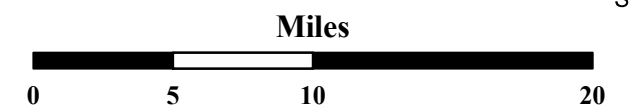
## Gadsden County Drinking Water 2021



### DRINKING WATER SOURCE FOR BUILT PARCELS\*

- PUBLIC WATER
- ONSITE WELL
- NO DATA
- CONFLICTING DATA
- NOT BUILT
- Interstate
- US Highway

\* Includes parcels with unknown Built status. Percentages do not include parcels where drinking water is not applicable.



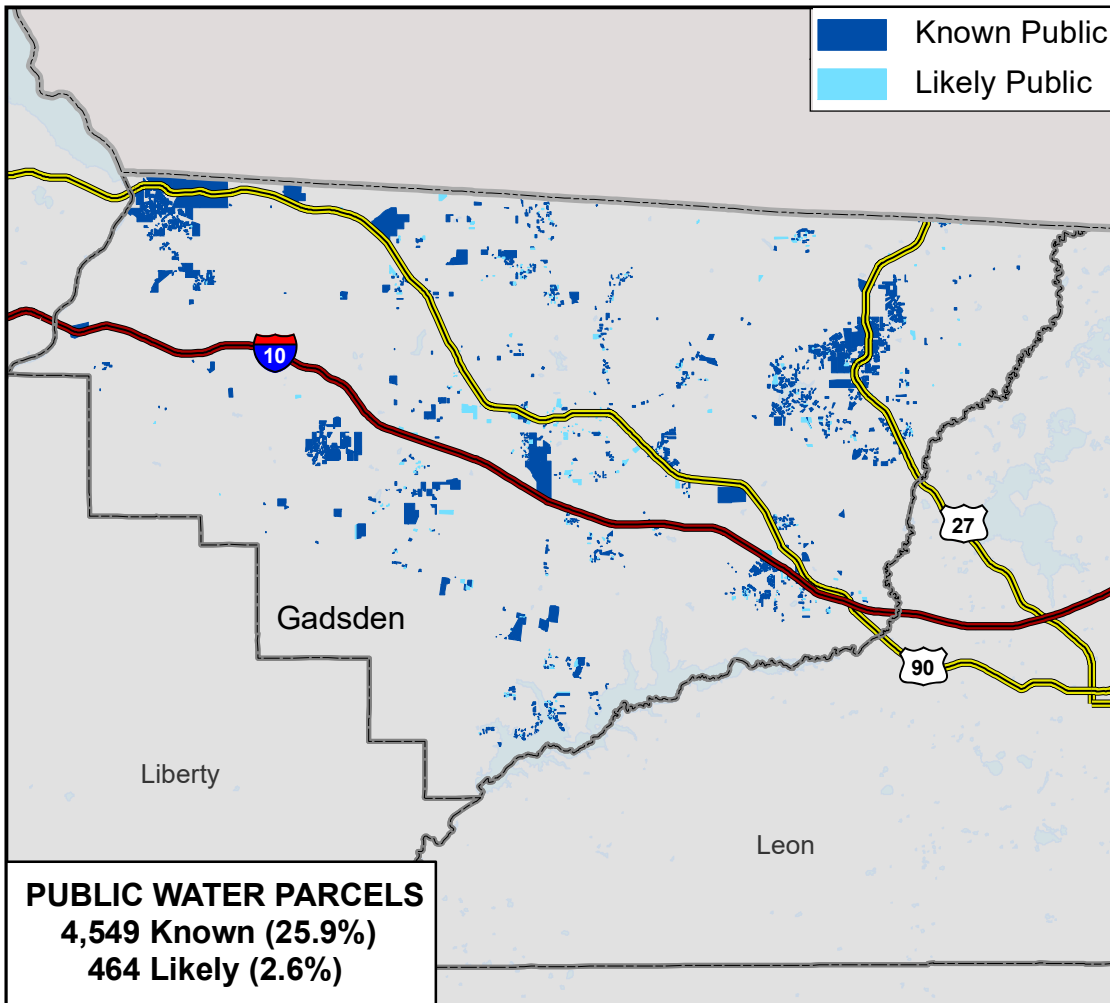
1:435,000  
Albers Equal Area NAD83 HARN

This map is based on sources of varied accuracy and scale provided by multiple organizations. FDOH assumes no liability for the use of this map and associated data.



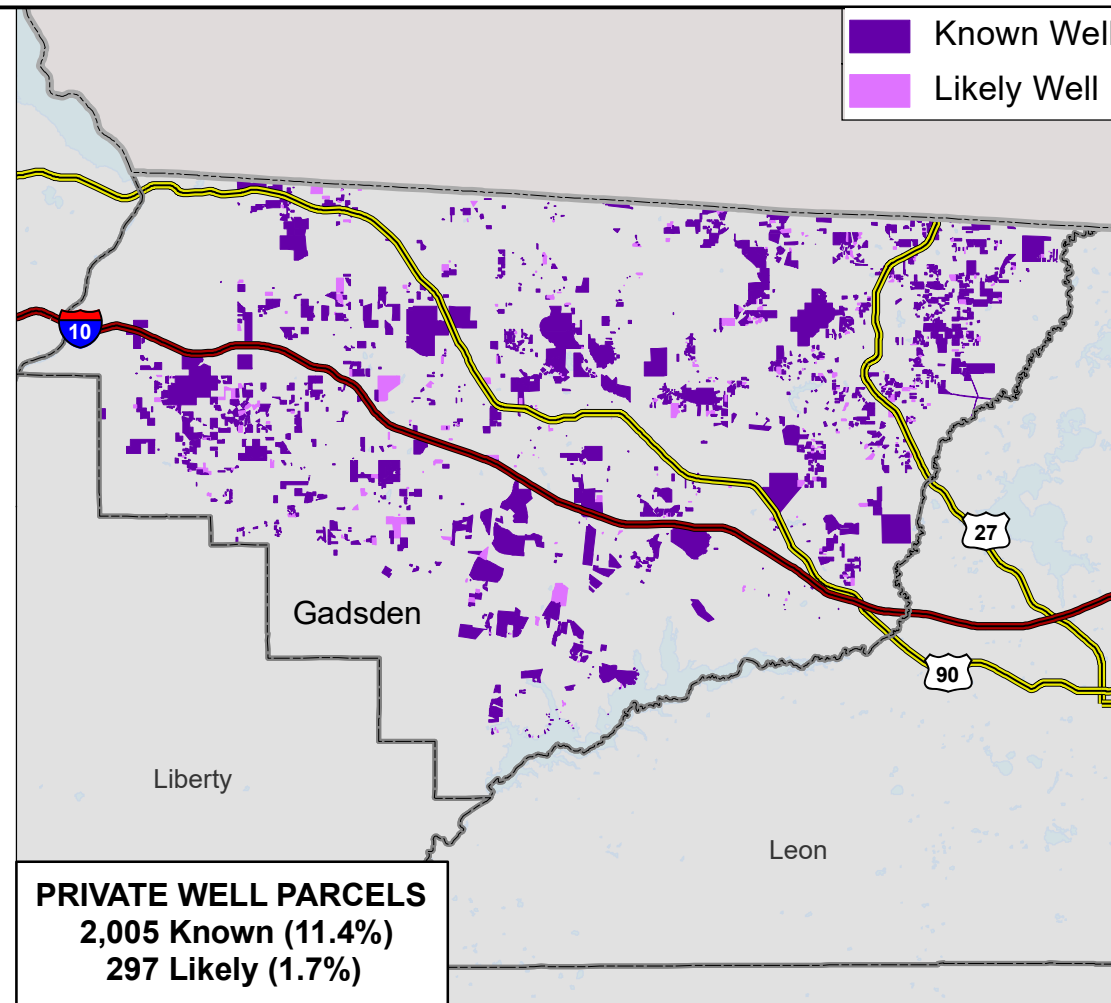
14Dec2021

- Known Public
- Likely Public



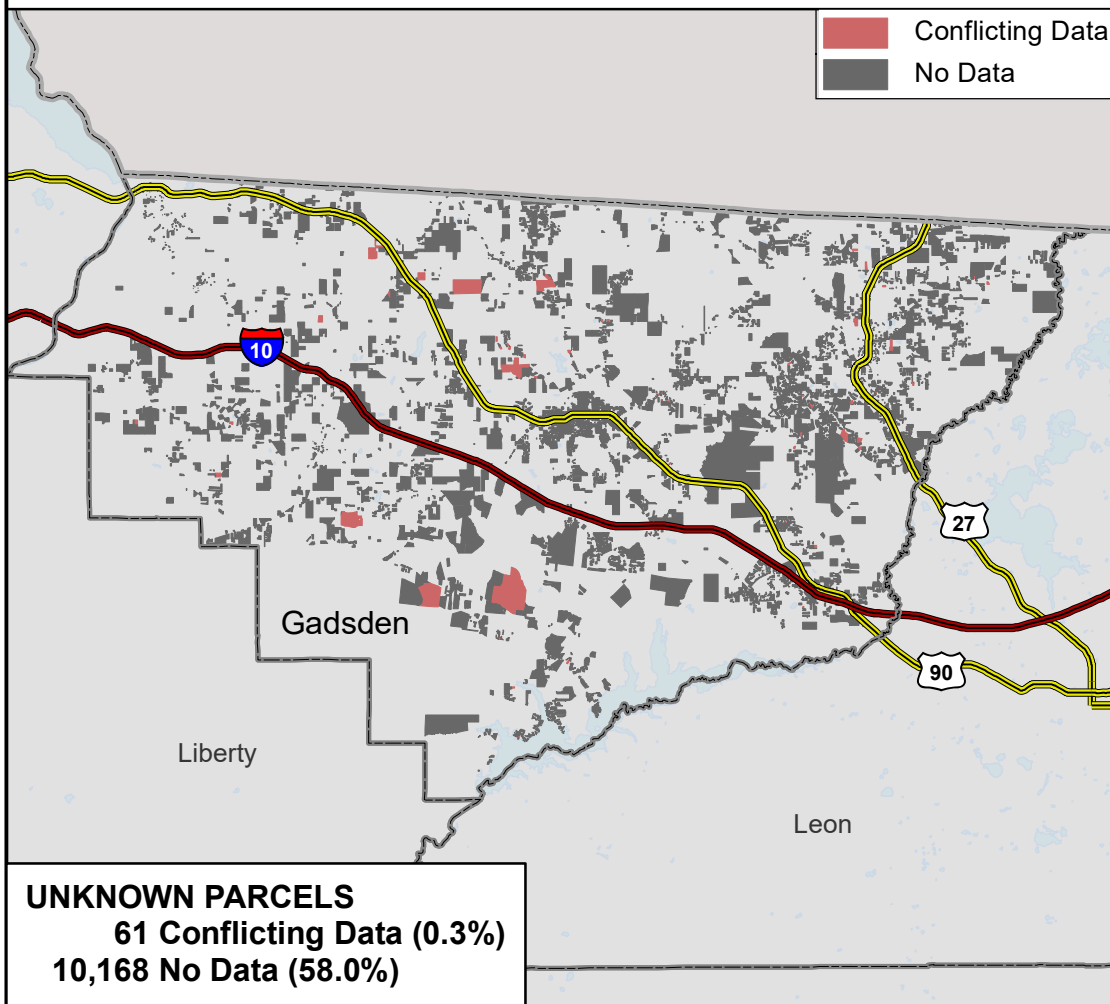
**PUBLIC WATER PARCELS**  
4,549 Known (25.9%)  
464 Likely (2.6%)

- Known Well
- Likely Well



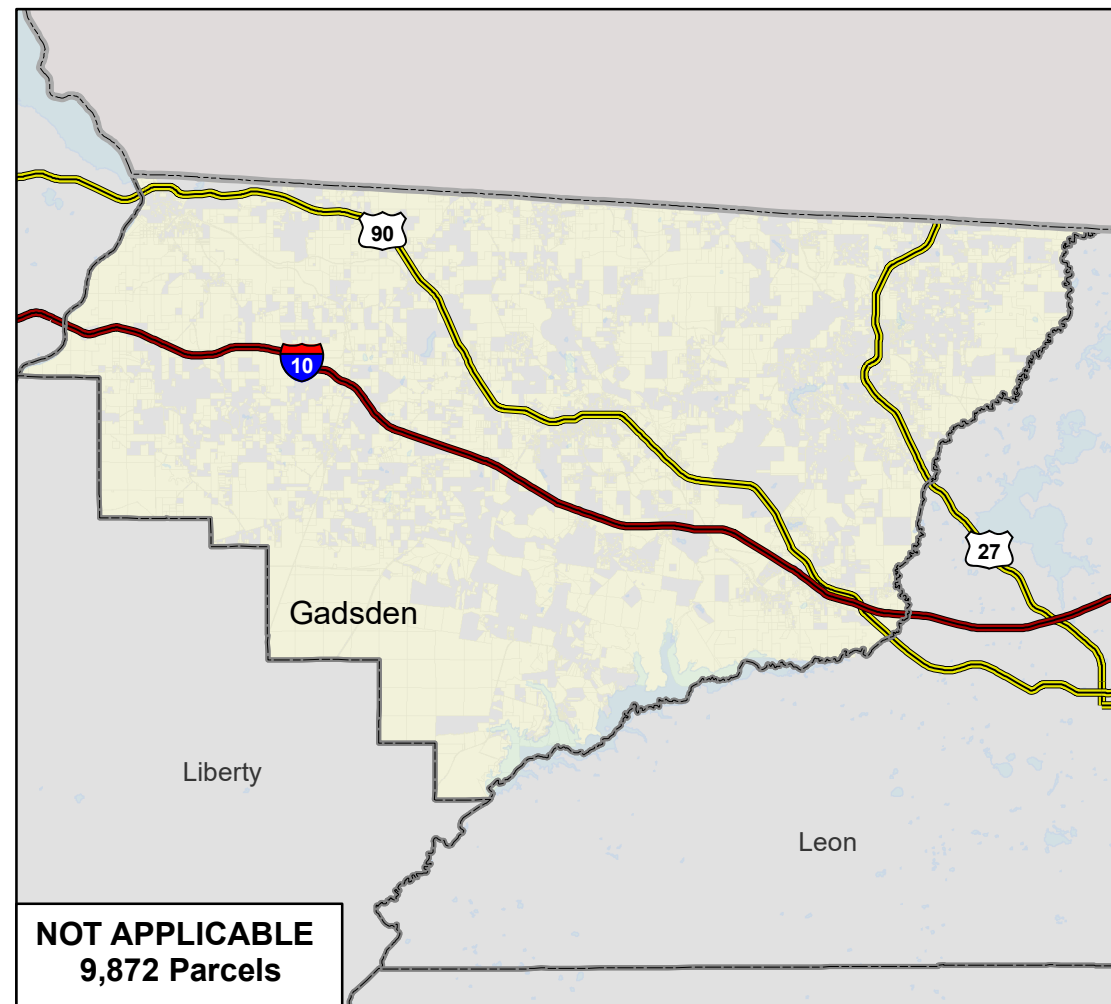
**PRIVATE WELL PARCELS**  
2,005 Known (11.4%)  
297 Likely (1.7%)

- Conflicting Data
- No Data



**UNKNOWN PARCELS**  
61 Conflicting Data (0.3%)  
10,168 No Data (58.0%)

- Not Built



**NOT APPLICABLE**  
9,872 Parcels