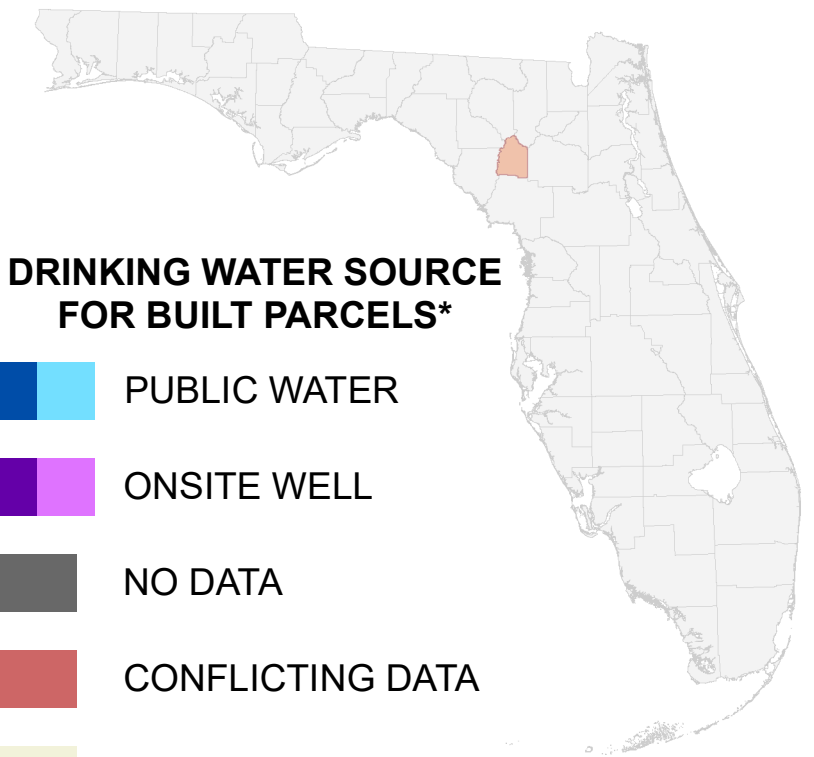


Florida Water Management Inventory

Gilchrist County Drinking Water 2022

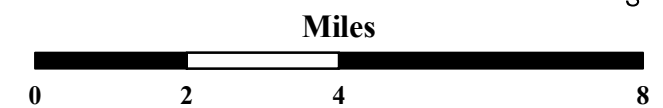


DRINKING WATER SOURCE FOR BUILT PARCELS*

- PUBLIC WATER
- ONSITE WELL
- NO DATA
- CONFLICTING DATA
- NOT BUILT

US Highway
 State Road

*Includes parcels with unknown Built status. Percentages do not include parcels where drinking water is not applicable.

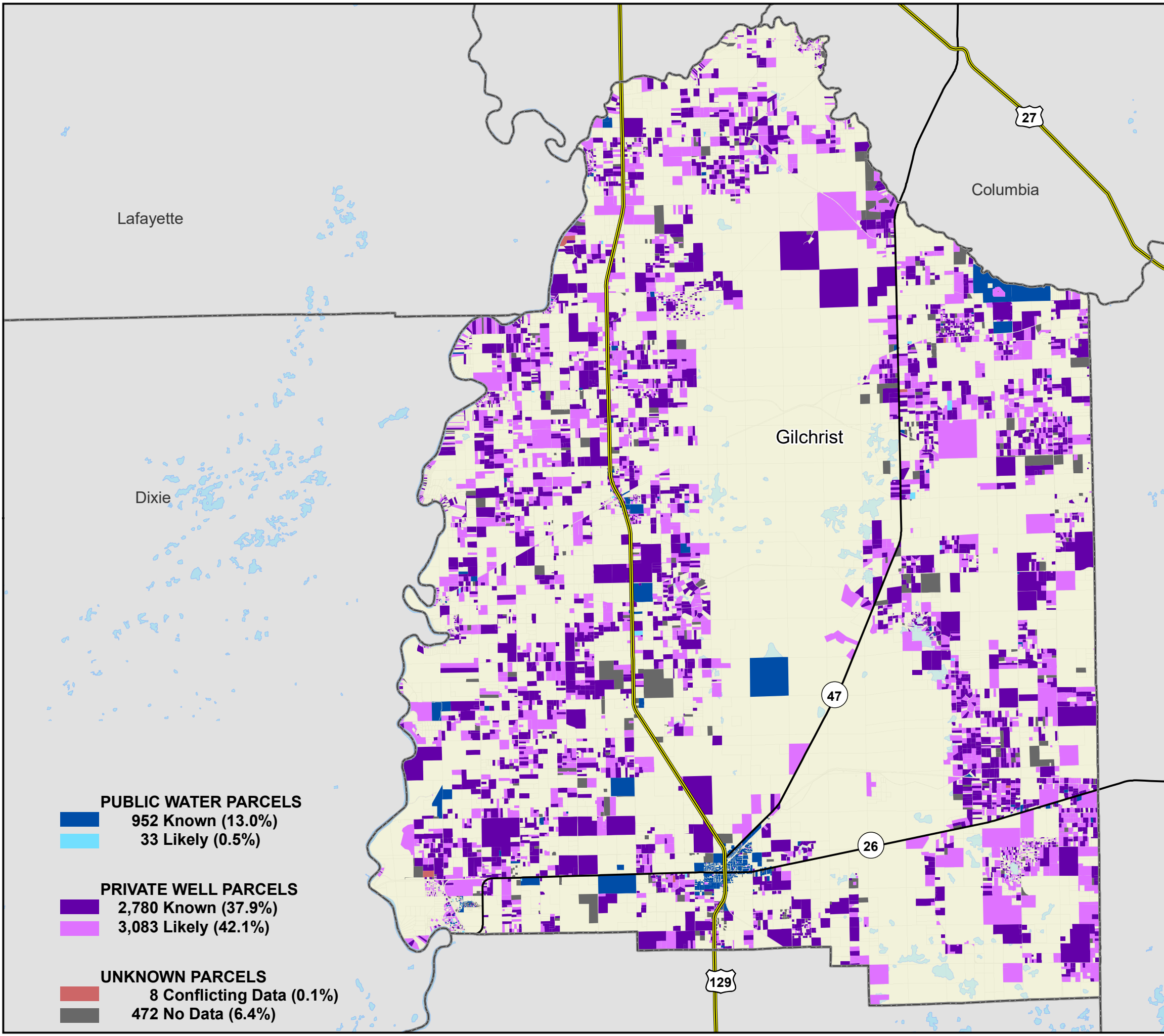


1:160,000
 Albers Equal Area NAD83 HARN

This map is based on sources of varied accuracy and scale provided by multiple organizations. FDOH assumes no liability for the use of this map and associated data.



01Mar2022



PUBLIC WATER PARCELS	
	952 Known (13.0%)
	33 Likely (0.5%)
PRIVATE WELL PARCELS	
	2,780 Known (37.9%)
	3,083 Likely (42.1%)
UNKNOWN PARCELS	
	8 Conflicting Data (0.1%)
	472 No Data (6.4%)