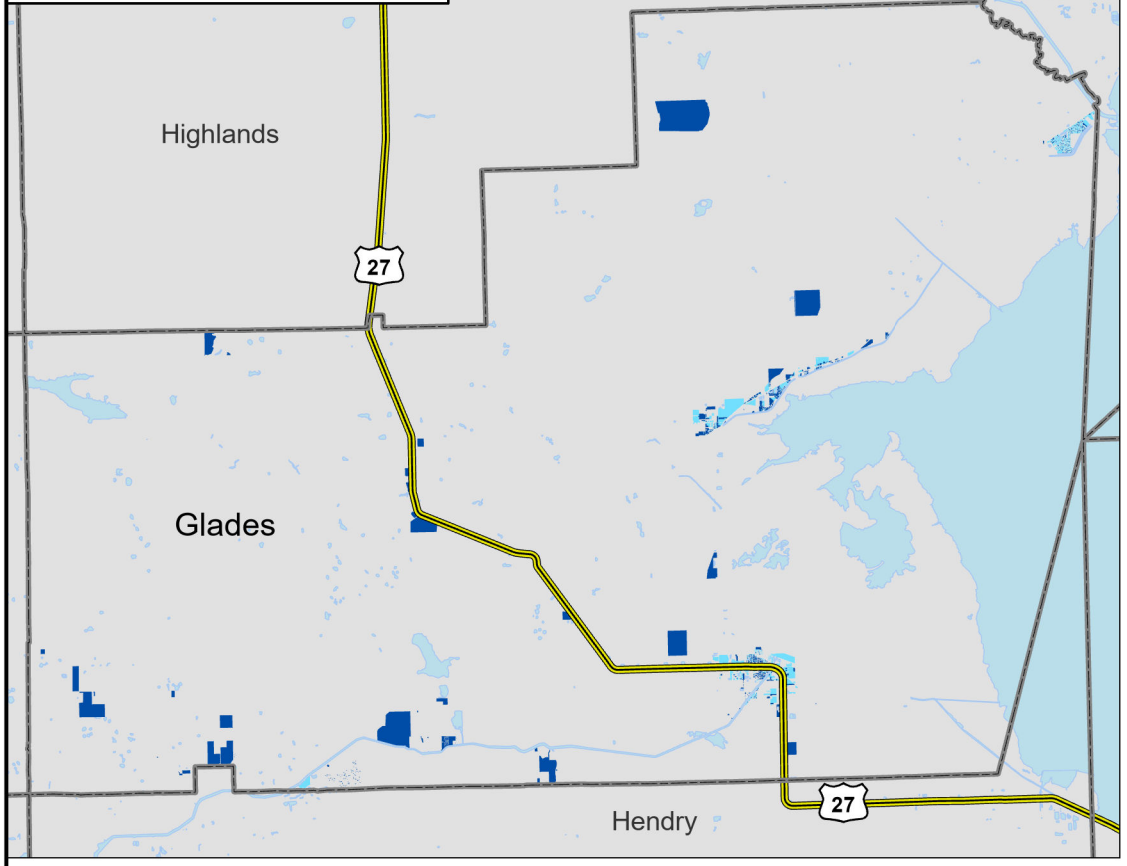


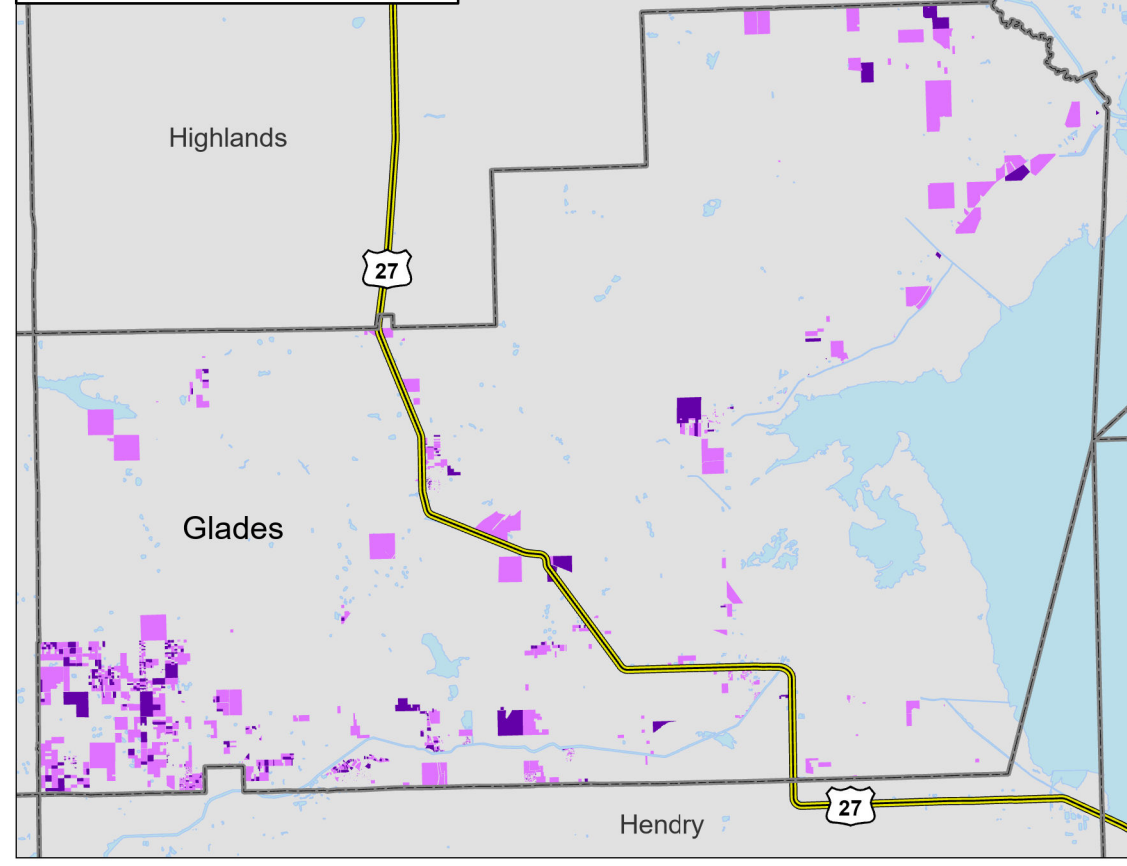
**PUBLIC WATER PARCELS**  
 1,400 Known (25.3%)  
 2,094 Likely (37.8%)

Known Public  
 Likely Public



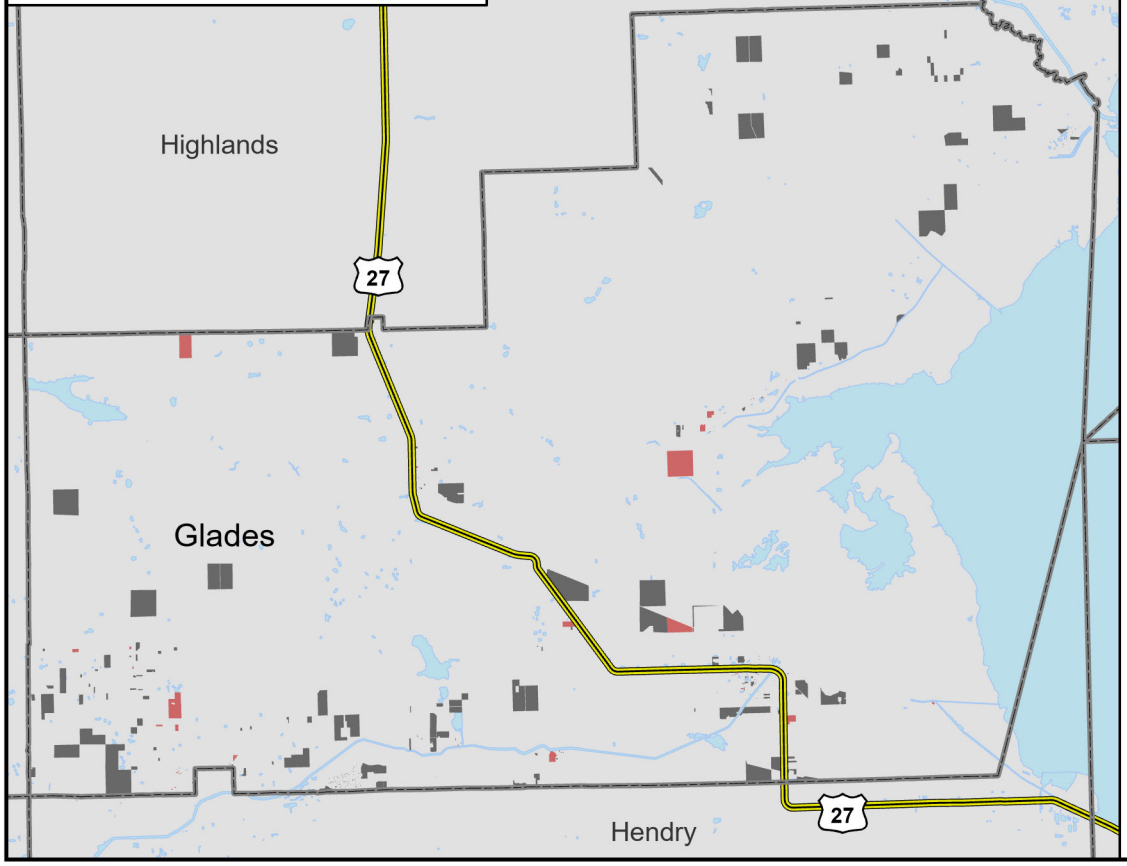
**PRIVATE WELL PARCELS**  
 378 Known (6.8%)  
 1,290 Likely (23.3%)

Known Well  
 Likely Well

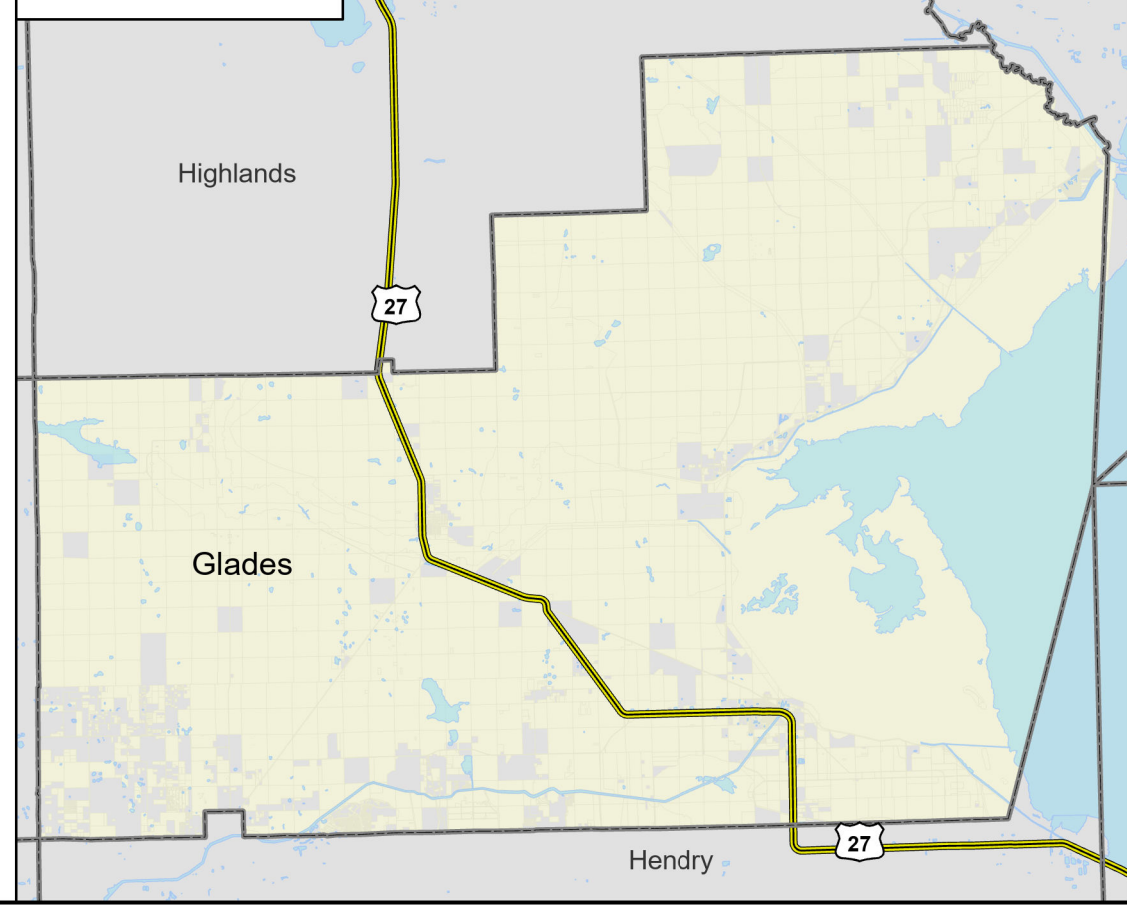


**UNKNOWN PARCELS**  
 51 Conflicting Data (0.9%)  
 329 No Data (5.9%)

Conflicting Data  
 No Data

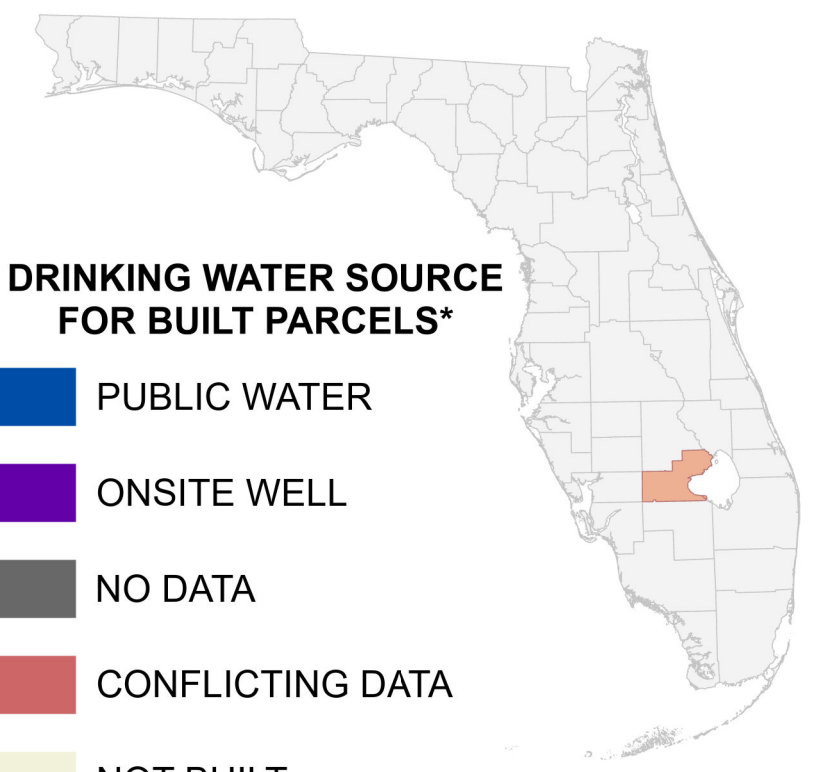


**NOT APPLICABLE**  
 5,759 Parcels



# Florida Water Management Inventory

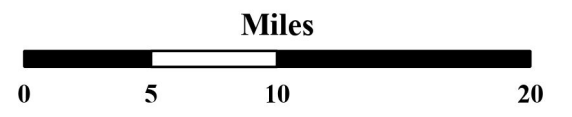
## Glades County Drinking Water 2024



### DRINKING WATER SOURCE FOR BUILT PARCELS\*

- PUBLIC WATER
- ONSITE WELL
- NO DATA
- CONFLICTING DATA
- NOT BUILT
- Interstate
- US Highway

\* Includes parcels with unknown Built status. Percentages do not include parcels where drinking water is not applicable.



1:480,000  
 Albers Equal Area NAD83 HARN

This map is based on sources of varied accuracy and scale provided by multiple organizations. FDOH assumes no liability for the use of this map and associated data.



02July2024