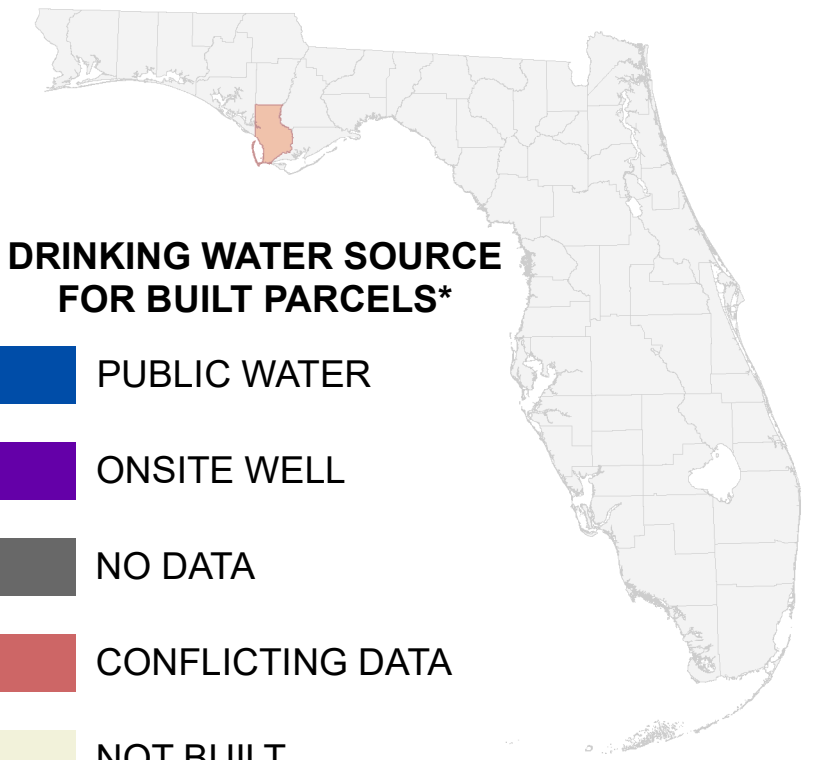


Florida Water Management Inventory

Gulf County Drinking Water 2021



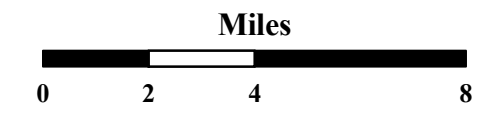
DRINKING WATER SOURCE FOR BUILT PARCELS*

- PUBLIC WATER
- ONSITE WELL
- NO DATA
- CONFLICTING DATA
- NOT BUILT

US Highway

State Road

* Includes parcels with unknown Built status. Percentages do not include parcels where drinking water is not applicable.

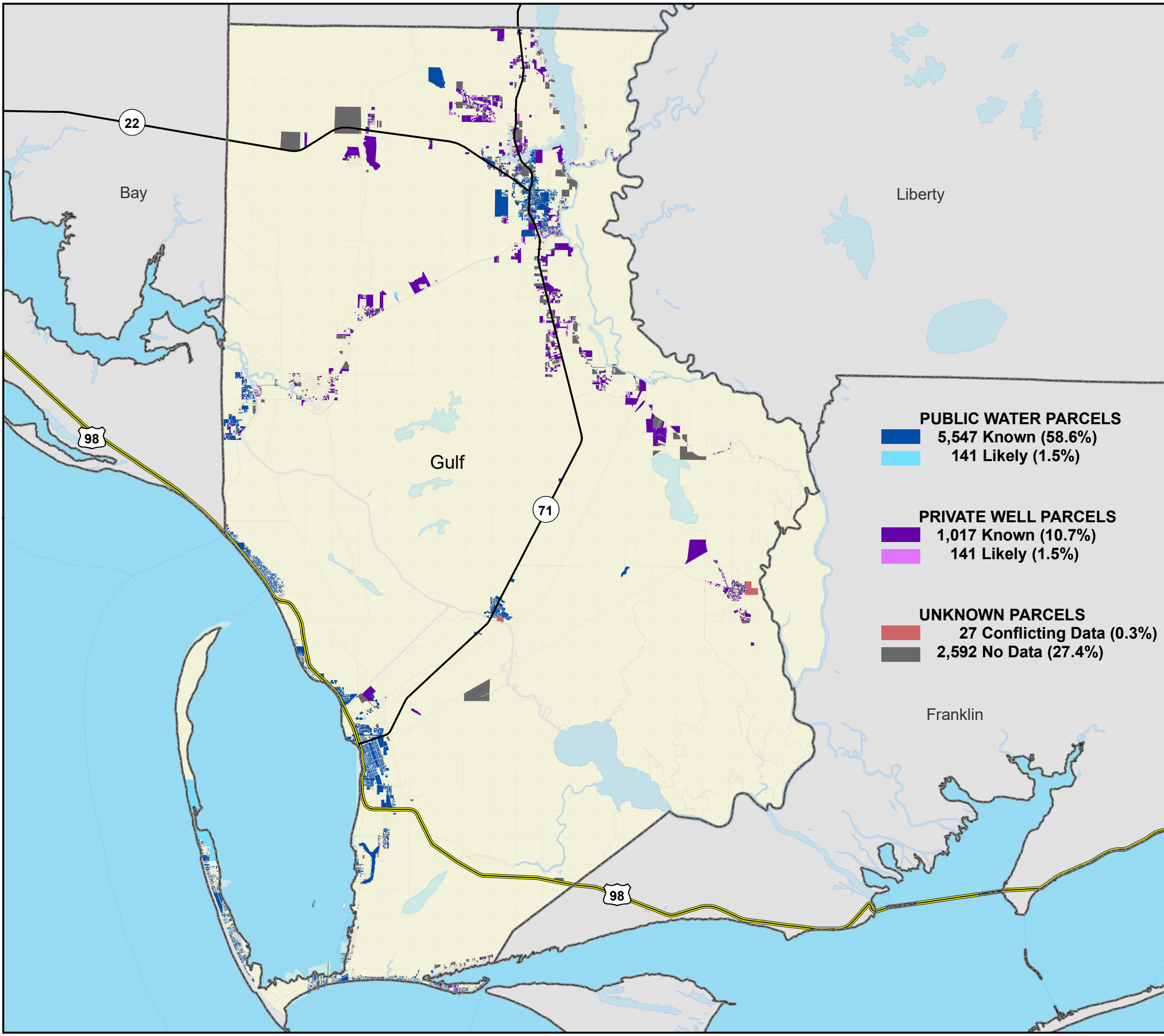


1:230,000
Albers Equal Area NAD83 HARN

This map is based on sources of varied accuracy and scale provided by multiple organizations. FDOH assumes no liability for the use of this map and associated data.



12Nov2021



- PUBLIC WATER PARCELS**
 - 5,547 Known (58.6%)
 - 141 Likely (1.5%)
- PRIVATE WELL PARCELS**
 - 1,017 Known (10.7%)
 - 141 Likely (1.5%)
- UNKNOWN PARCELS**
 - 27 Conflicting Data (0.3%)
 - 2,592 No Data (27.4%)