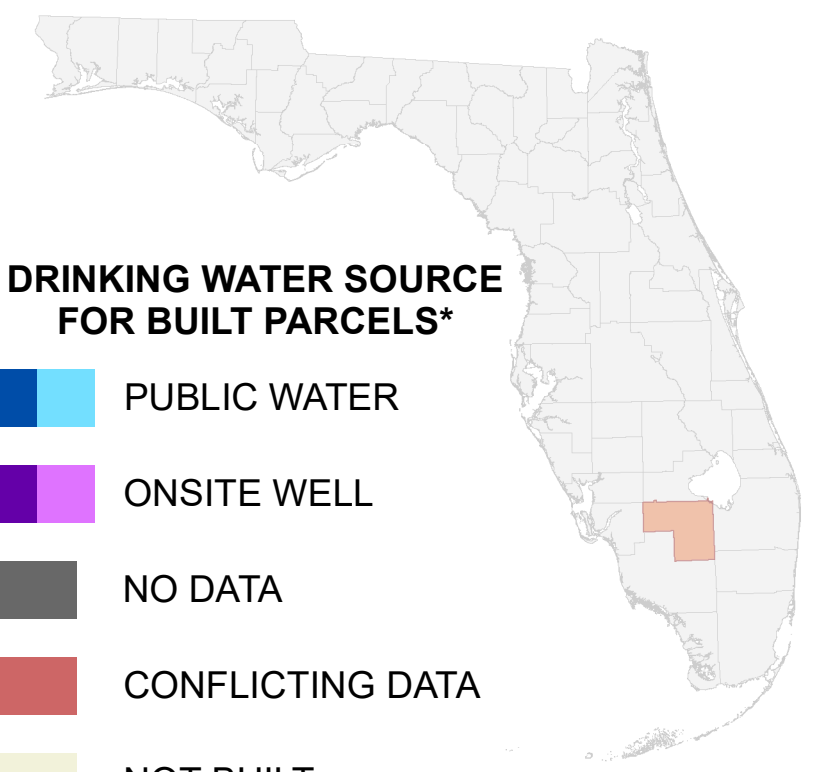
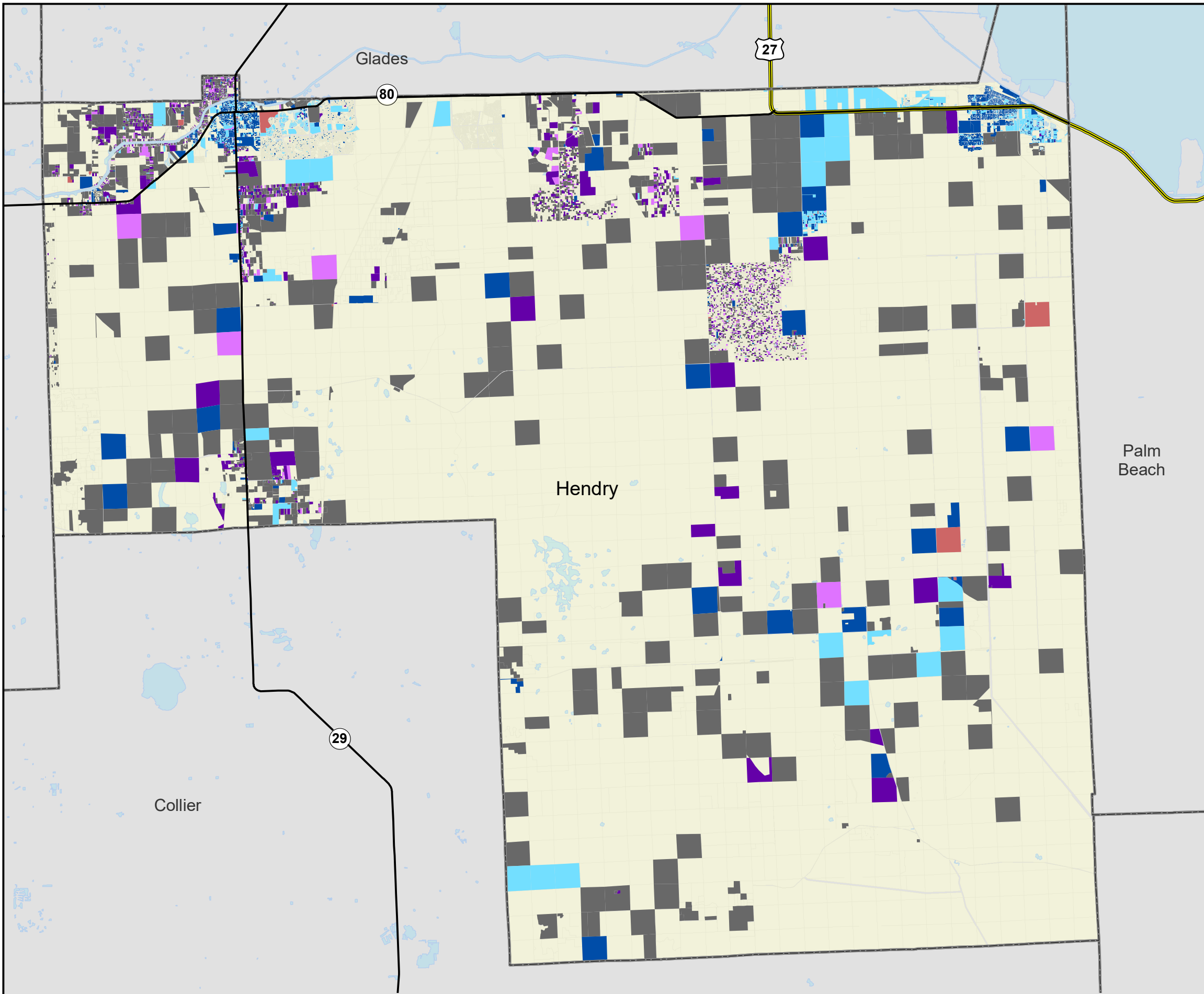


Florida Water Management Inventory

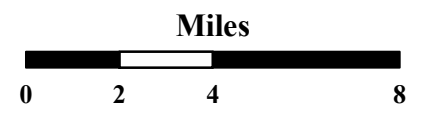
Hendry County Drinking Water 2018



DRINKING WATER SOURCE FOR BUILT PARCELS*

- PUBLIC WATER
- ONSITE WELL
- NO DATA
- CONFLICTING DATA
- NOT BUILT

- Interstate
 - US Highway
 - State Road
- * Includes parcels with unknown Built status. Percentages do not include parcels where drinking water is not applicable.



1:260,000
Albers Equal Area NAD83 HARN

<p>PUBLIC WATER PARCELS</p> <ul style="list-style-type: none"> 4,899 Known (35.5%) 3,075 Likely (22.3%) 	<p>PRIVATE WELL PARCELS</p> <ul style="list-style-type: none"> 1,359 Known (9.8%) 521 Likely (3.8%) 	<p>UNKNOWN PARCELS</p> <ul style="list-style-type: none"> 51 Conflicting Data (0.4%) 3,902 No Data (28.3%)
--	--	---

This map is based on sources of varied accuracy and scale provided by multiple organizations. FDOH assumes no liability for the use of this map and associated data.

