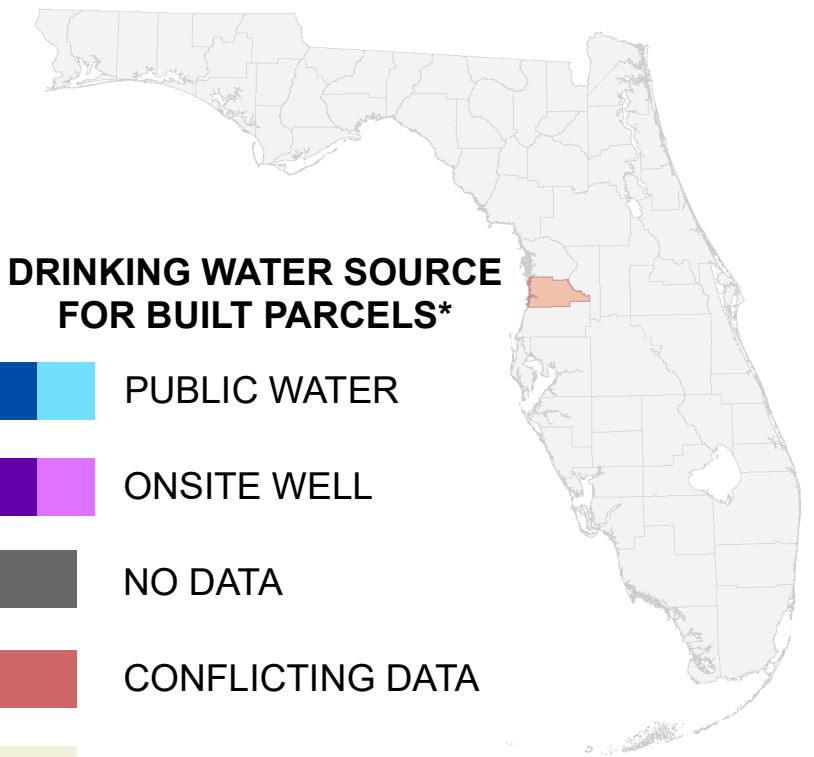


Florida Water Management Inventory

Hernando County Drinking Water 2023

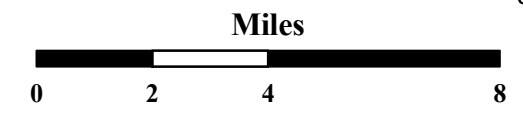


DRINKING WATER SOURCE FOR BUILT PARCELS*

- PUBLIC WATER
- ONSITE WELL
- NO DATA
- CONFLICTING DATA
- NOT BUILT

* Includes parcels with unknown Built status. Percentages do not include parcels where drinking water is not applicable.

- Interstate
- US Highway
- State Road

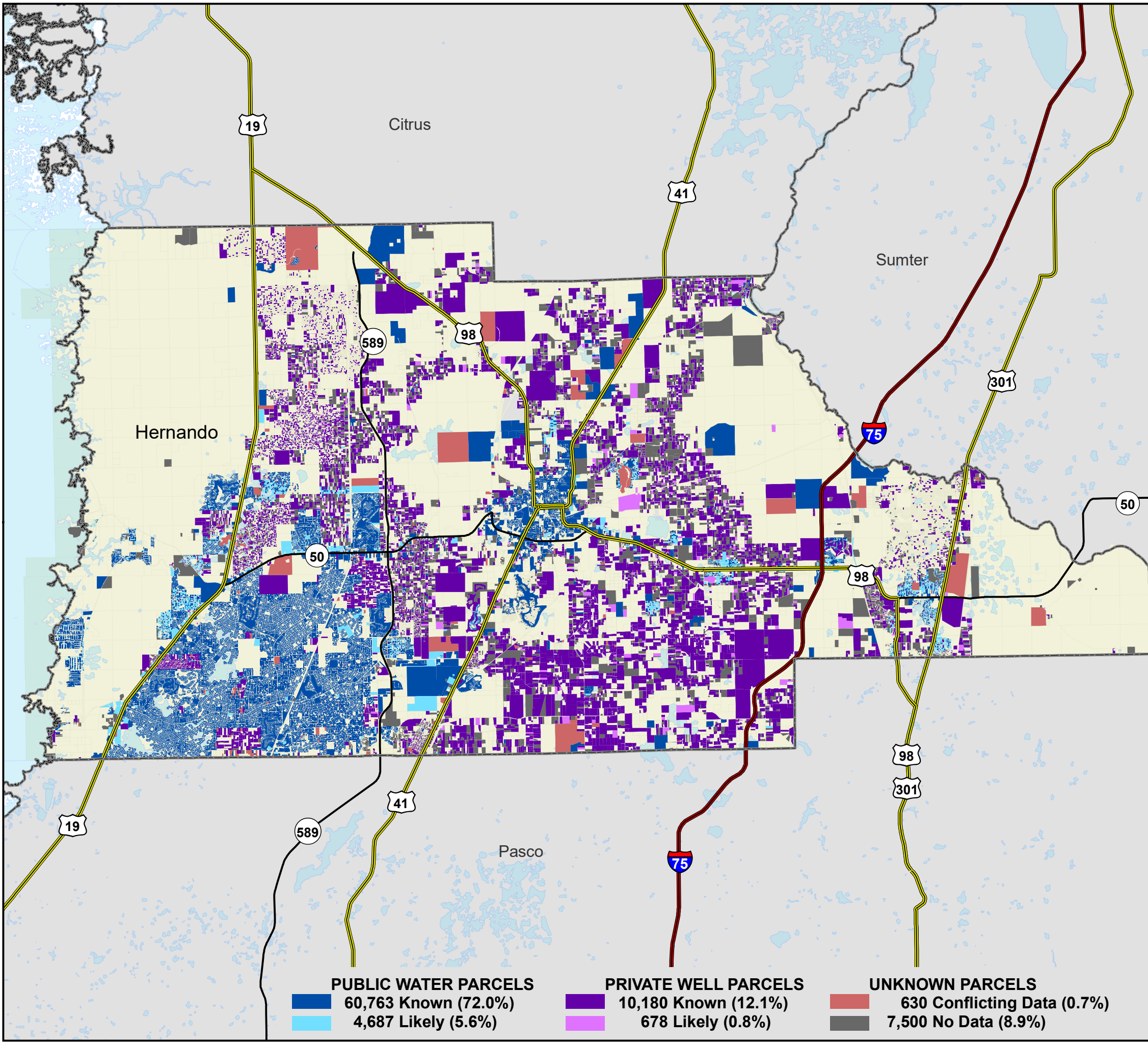


1:210,000
Albers Equal Area NAD83 HARN

This map is based on sources of varied accuracy and scale provided by multiple organizations. FDOH assumes no liability for the use of this map and associated data.



21Mar2023



PUBLIC WATER PARCELS		PRIVATE WELL PARCELS		UNKNOWN PARCELS	
	60,763 Known (72.0%)		10,180 Known (12.1%)		630 Conflicting Data (0.7%)
	4,687 Likely (5.6%)		678 Likely (0.8%)		7,500 No Data (8.9%)