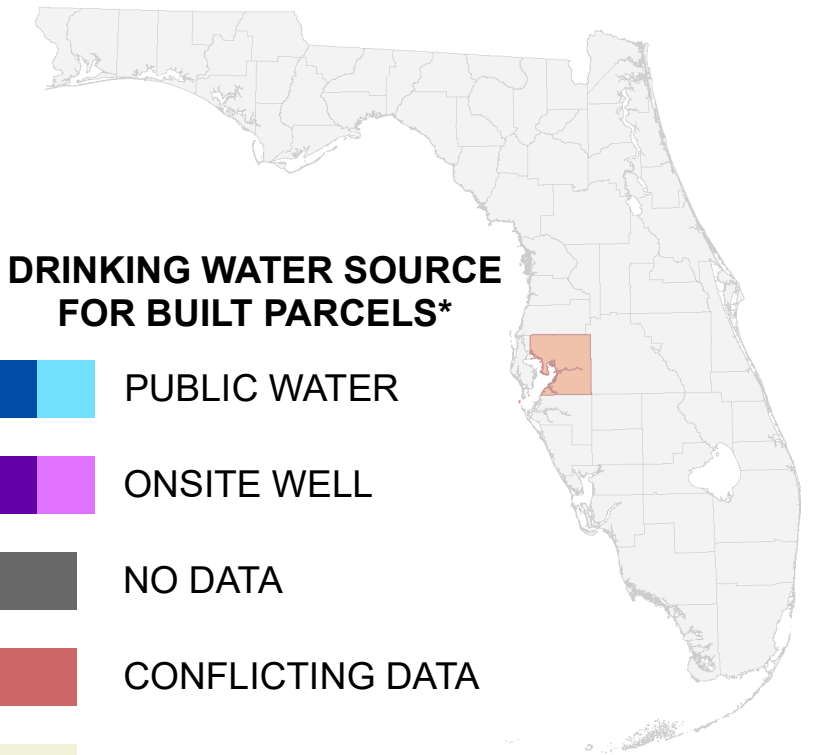


Florida Water Management Inventory

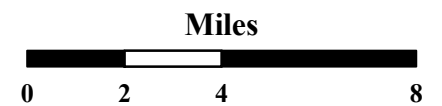
Hillsborough County Drinking Water 2023



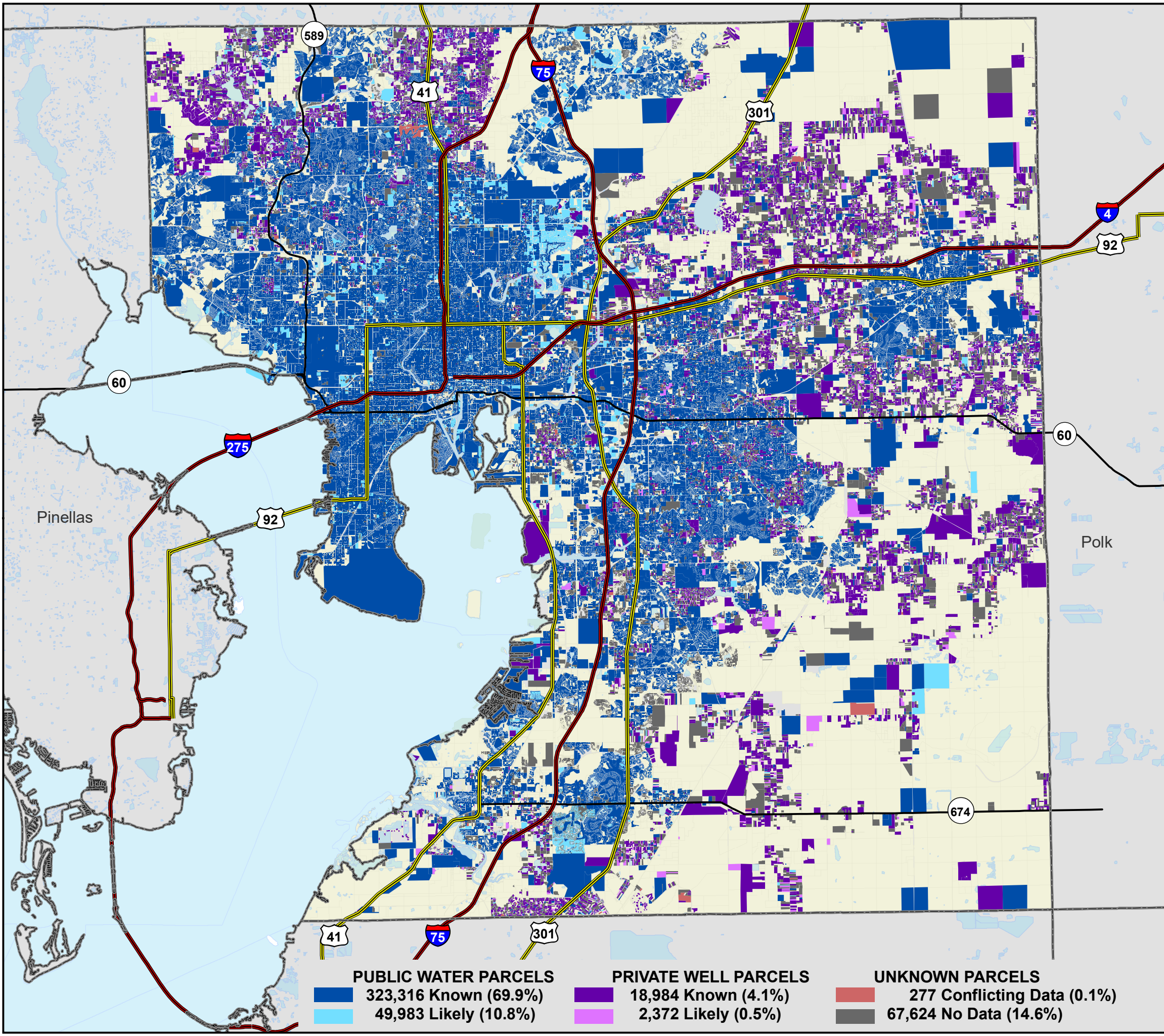
DRINKING WATER SOURCE FOR BUILT PARCELS*

- PUBLIC WATER
- ONSITE WELL
- NO DATA
- CONFLICTING DATA
- NOT BUILT

- Interstate
 - US Highway
 - State Road
- * Includes parcels with unknown Built status. Percentages do not include parcels where drinking water is not applicable.



1:250,000
Albers Equal Area NAD83 HARN



PUBLIC WATER PARCELS		PRIVATE WELL PARCELS		UNKNOWN PARCELS	
	323,316 Known (69.9%)		18,984 Known (4.1%)		277 Conflicting Data (0.1%)
	49,983 Likely (10.8%)		2,372 Likely (0.5%)		67,624 No Data (14.6%)

This map is based on sources of varied accuracy and scale provided by multiple organizations. FDOH assumes no liability for the use of this map and associated data.