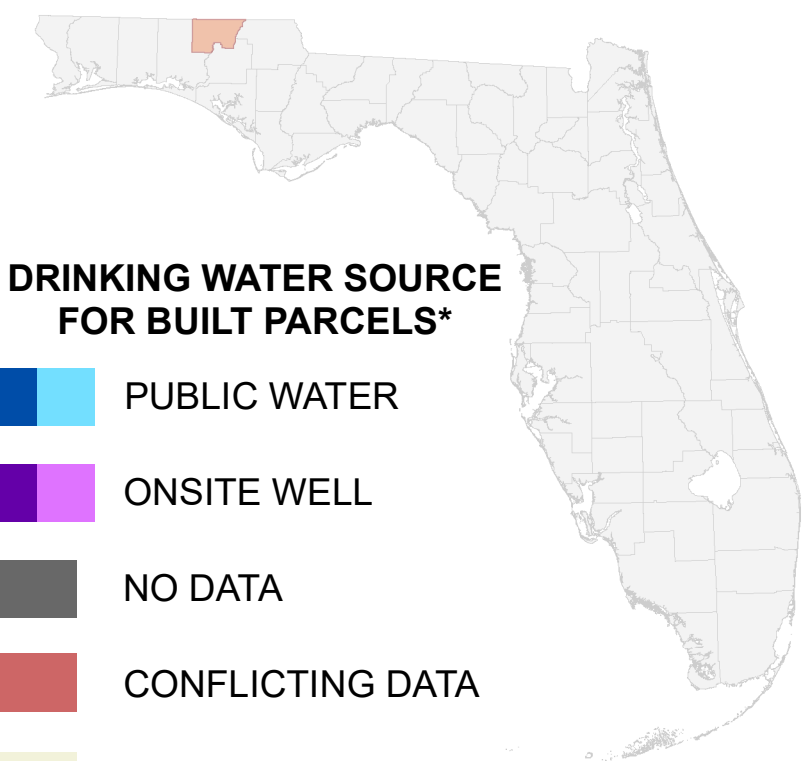
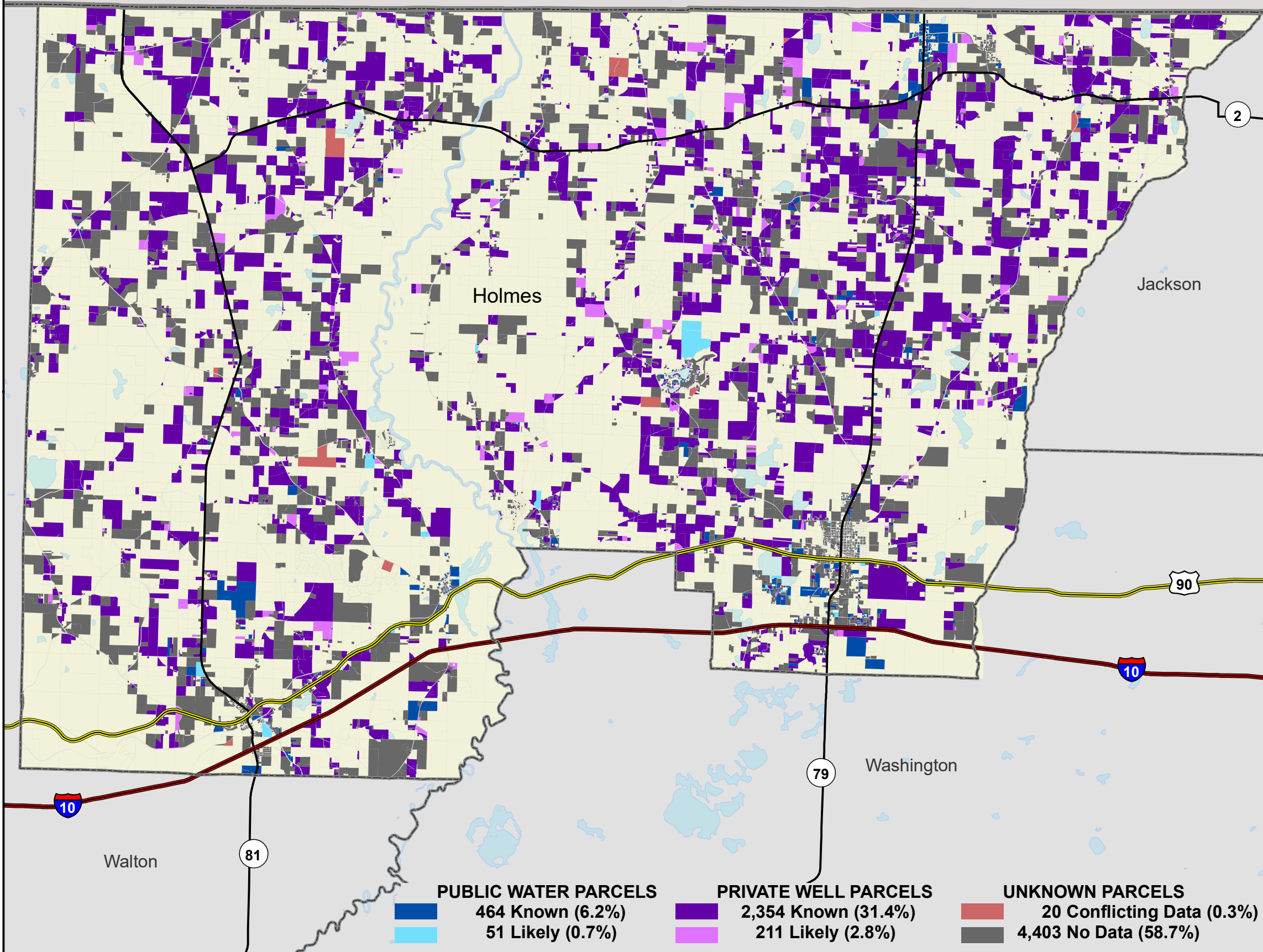


Florida Water Management Inventory

Holmes County Drinking Water 2021

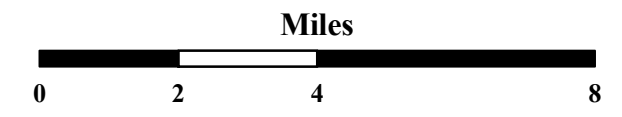


DRINKING WATER SOURCE FOR BUILT PARCELS*

- PUBLIC WATER
- ONSITE WELL
- NO DATA
- CONFLICTING DATA
- NOT BUILT

* Includes parcels with unknown Built status. Percentages do not include parcels where drinking water is not applicable.

- Interstate
- US Highway
- State Road



1:175,000
Albers Equal Area NAD83 HARN

PUBLIC WATER PARCELS	PRIVATE WELL PARCELS	UNKNOWN PARCELS
 464 Known (6.2%)	 2,354 Known (31.4%)	 20 Conflicting Data (0.3%)
 51 Likely (0.7%)	 211 Likely (2.8%)	 4,403 No Data (58.7%)

This map is based on sources of varied accuracy and scale provided by multiple organizations. FDOH assumes no liability for the use of this map and associated data.



15Oct2021