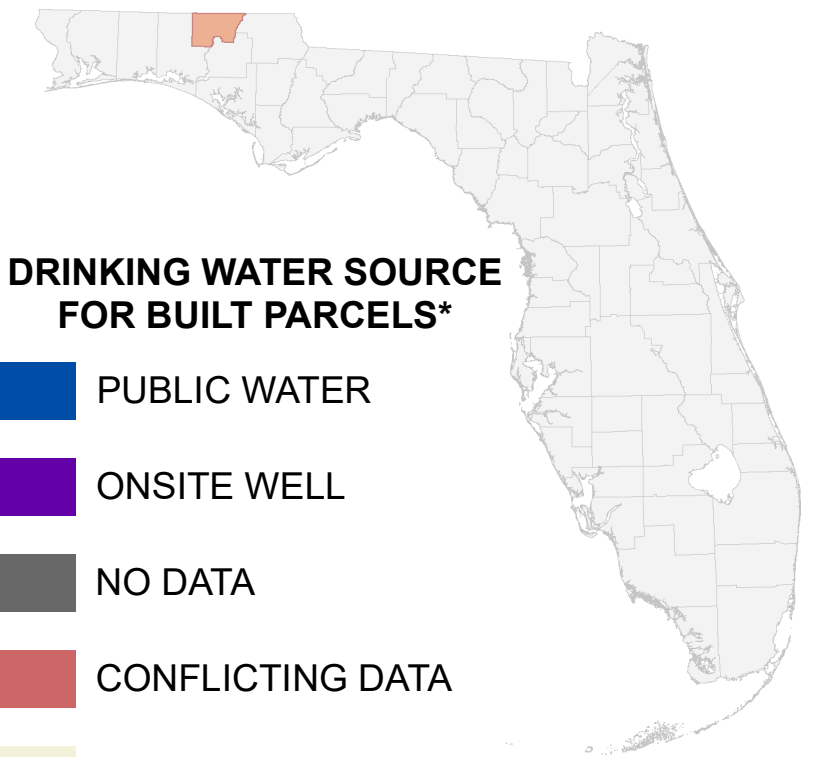


Florida Water Management Inventory

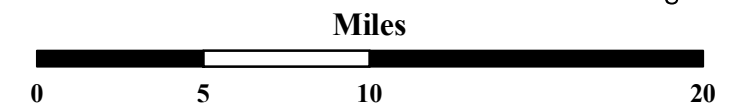
Holmes County Drinking Water 2021



DRINKING WATER SOURCE FOR BUILT PARCELS*

- PUBLIC WATER
- ONSITE WELL
- NO DATA
- CONFLICTING DATA
- NOT BUILT
- Interstate
- US Highway
- State Road

* Includes parcels with unknown Built status. Percentages do not include parcels where drinking water is not applicable.



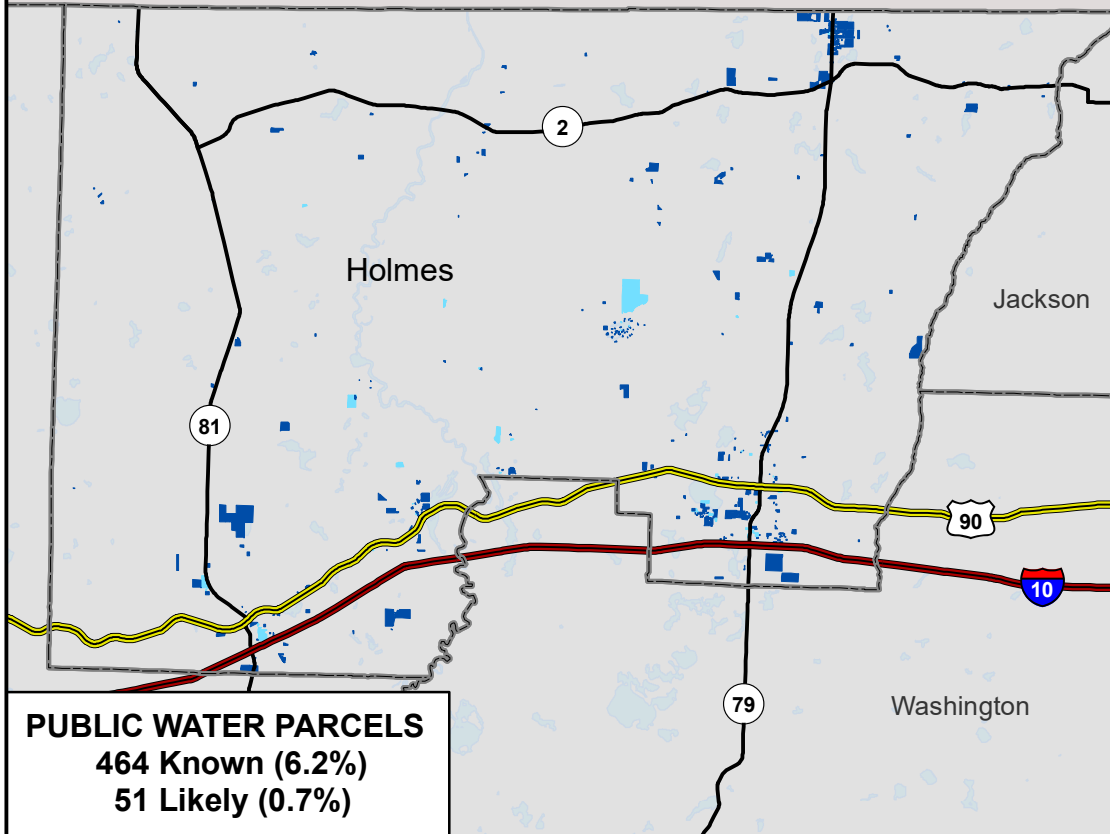
1:365,000
Albers Equal Area NAD83 HARN

This map is based on sources of varied accuracy and scale provided by multiple organizations. FDOH assumes no liability for the use of this map and associated data.



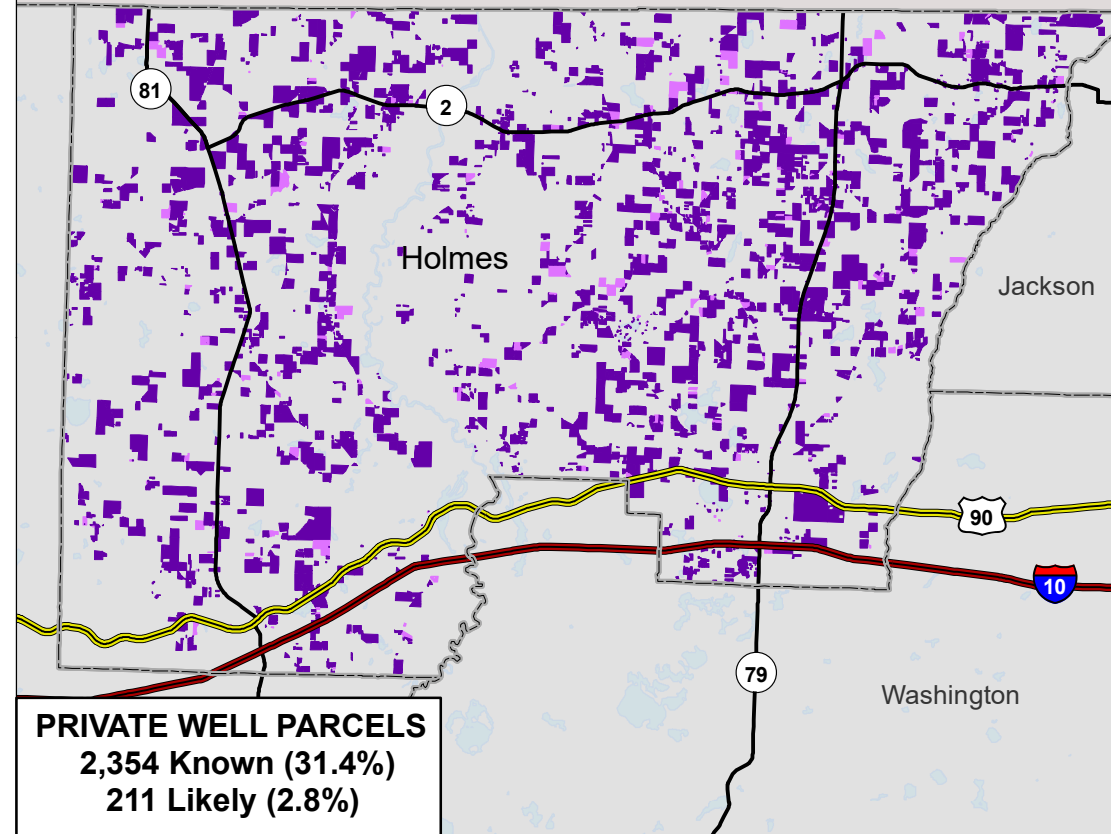
15Oct2021

- Known Public
- Likely Public



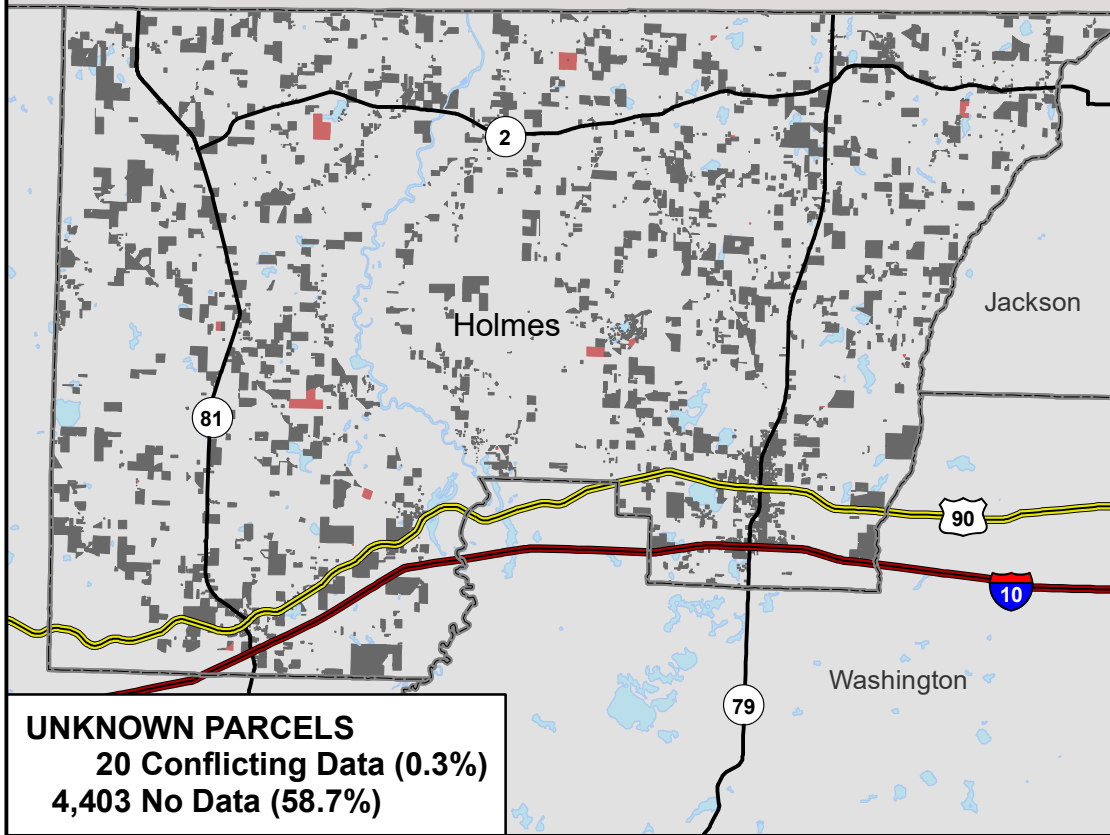
PUBLIC WATER PARCELS
464 Known (6.2%)
51 Likely (0.7%)

- Known Well
- Likely Well



PRIVATE WELL PARCELS
2,354 Known (31.4%)
211 Likely (2.8%)

- Conflicting Data
- No Data



UNKNOWN PARCELS
20 Conflicting Data (0.3%)
4,403 No Data (58.7%)

NOT APPLICABLE
6,544 Parcels