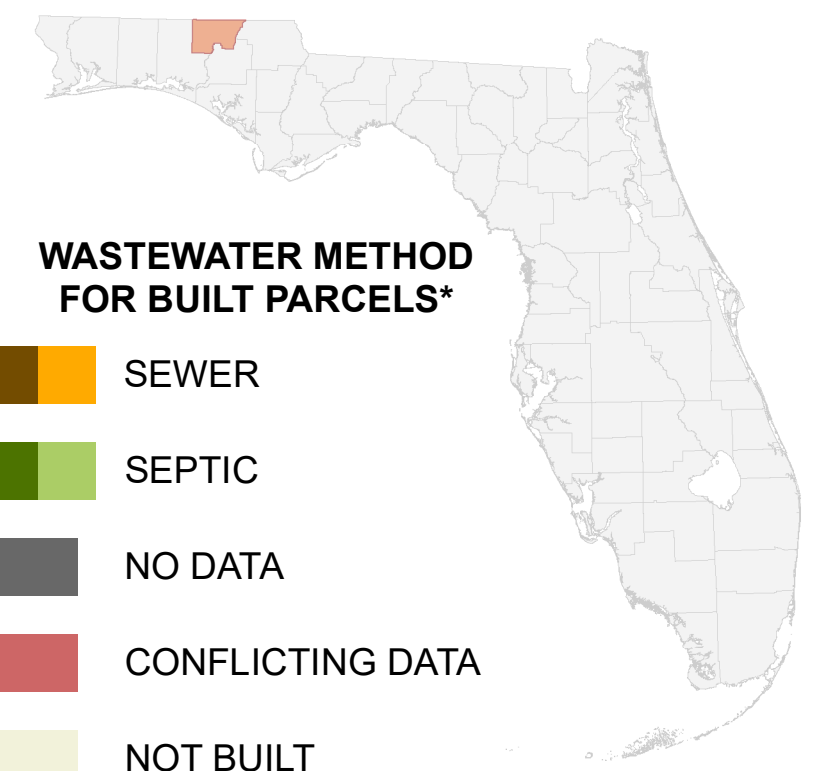
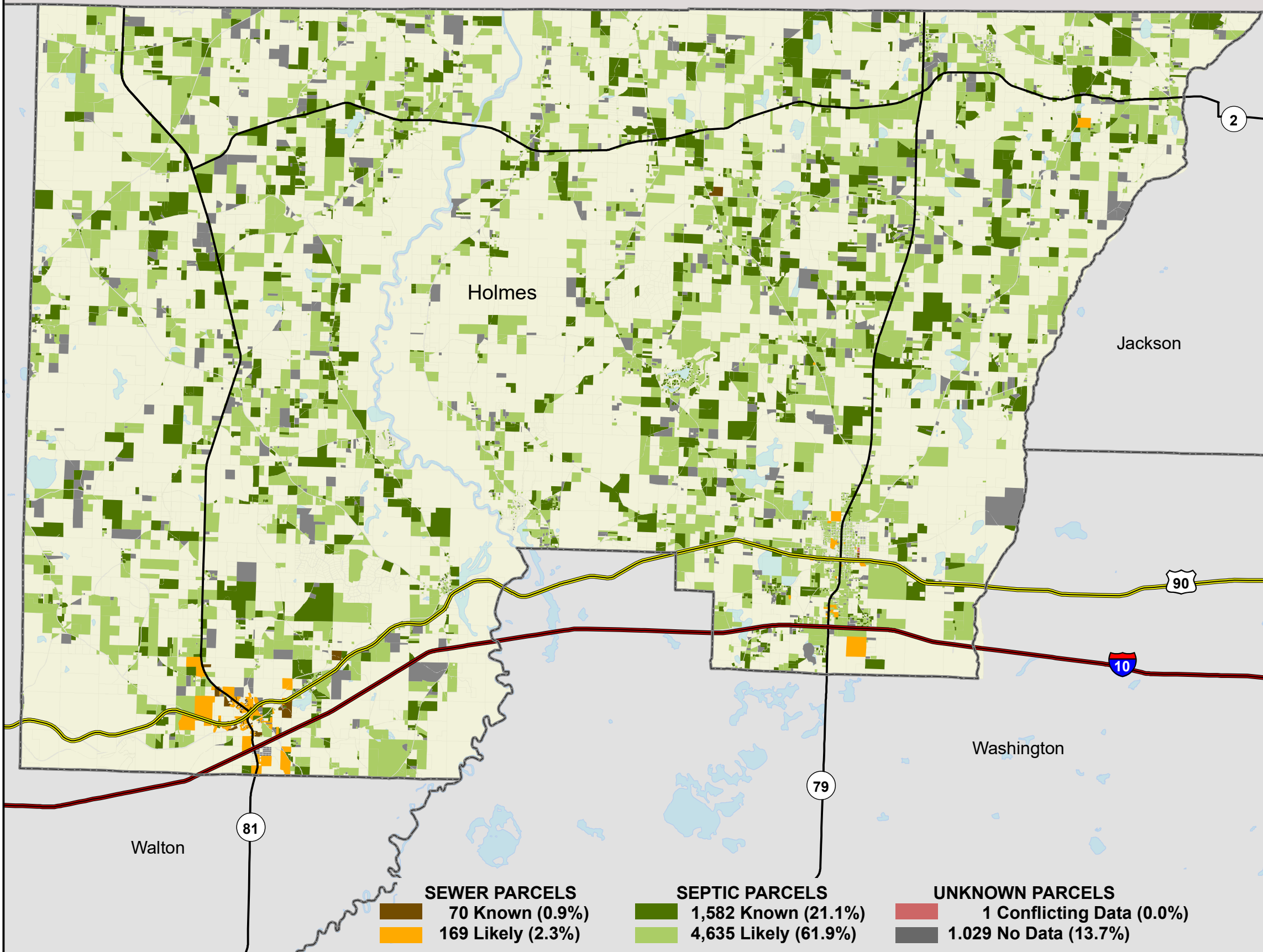


Florida Water Management Inventory

Holmes County Wastewater 2021



* Includes parcels with unknown Built status. Percentages do not include parcels where wastewater is not applicable.



SEWER PARCELS		SEPTIC PARCELS		UNKNOWN PARCELS	
	70 Known (0.9%)		1,582 Known (21.1%)		1 Conflicting Data (0.0%)
	169 Likely (2.3%)		4,635 Likely (61.9%)		1,029 No Data (13.7%)

This map is based on sources of varied accuracy and scale provided by multiple organizations. FDOH assumes no liability for the use of this map and associated data.