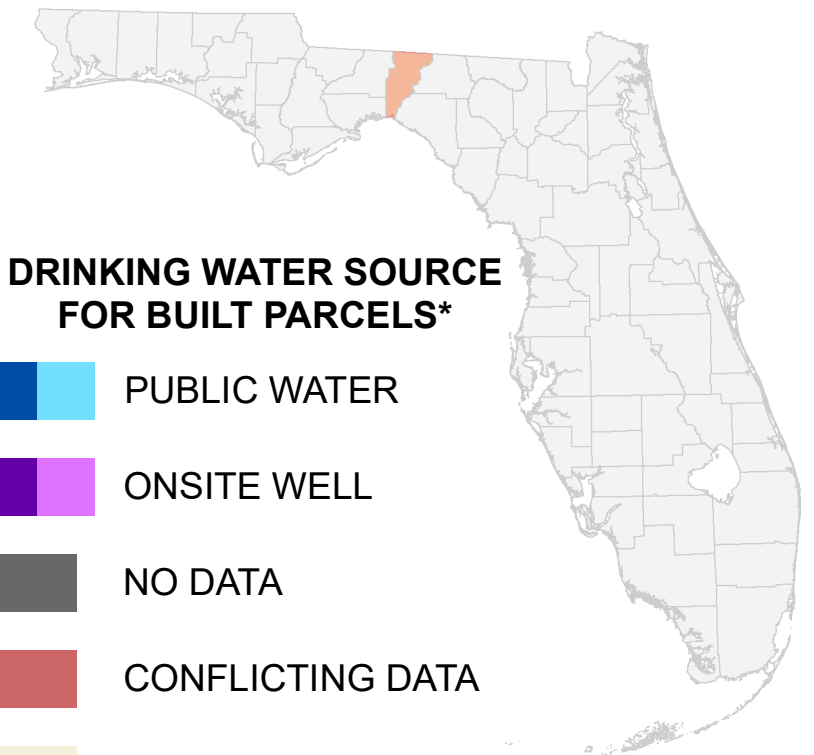


# Florida Water Management Inventory

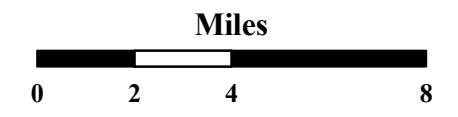
## Jefferson County Drinking Water 2021



### DRINKING WATER SOURCE FOR BUILT PARCELS\*

- PUBLIC WATER
- ONSITE WELL
- NO DATA
- CONFLICTING DATA
- NOT BUILT

Interstate  
 US Highway  
 State Road

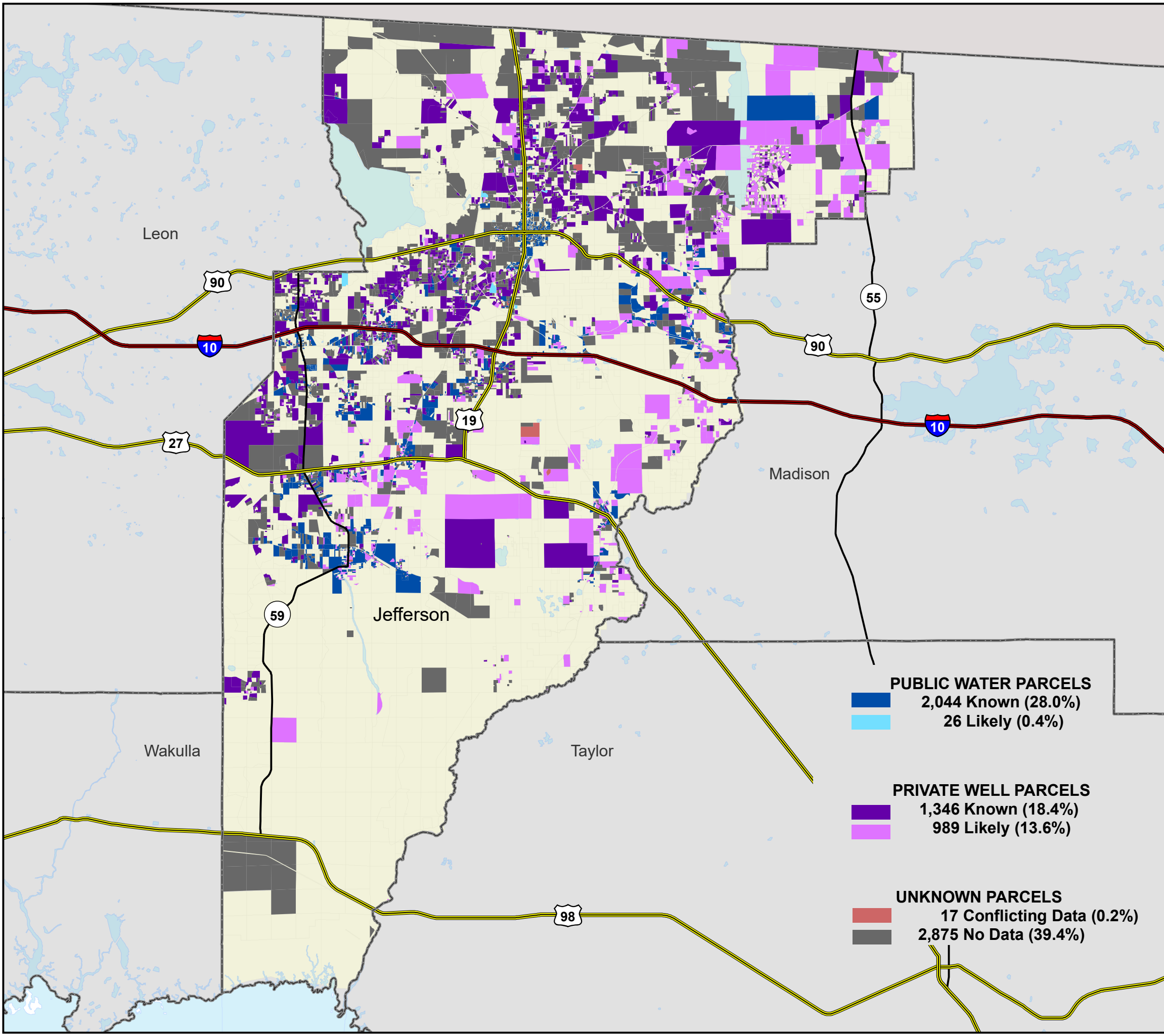


1:250,000  
Albers Equal Area NAD83 HARN

This map is based on sources of varied accuracy and scale provided by multiple organizations. FDOH assumes no liability for the use of this map and associated data.



14Dec2021



PUBLIC WATER PARCELS	
<span style="display: inline-block; width: 15px; height: 10px; background-color: #0070C0; border: 1px solid black;"></span>	2,044 Known (28.0%)
<span style="display: inline-block; width: 15px; height: 10px; background-color: #ADD8E6; border: 1px solid black;"></span>	26 Likely (0.4%)
PRIVATE WELL PARCELS	
<span style="display: inline-block; width: 15px; height: 10px; background-color: #800080; border: 1px solid black;"></span>	1,346 Known (18.4%)
<span style="display: inline-block; width: 15px; height: 10px; background-color: #FF00FF; border: 1px solid black;"></span>	989 Likely (13.6%)
UNKNOWN PARCELS	
<span style="display: inline-block; width: 15px; height: 10px; background-color: #C00000; border: 1px solid black;"></span>	17 Conflicting Data (0.2%)
<span style="display: inline-block; width: 15px; height: 10px; background-color: #666666; border: 1px solid black;"></span>	2,875 No Data (39.4%)

Leon

Madison

Jefferson

Taylor

Wakulla

90

55

90

27

19

10

59

98