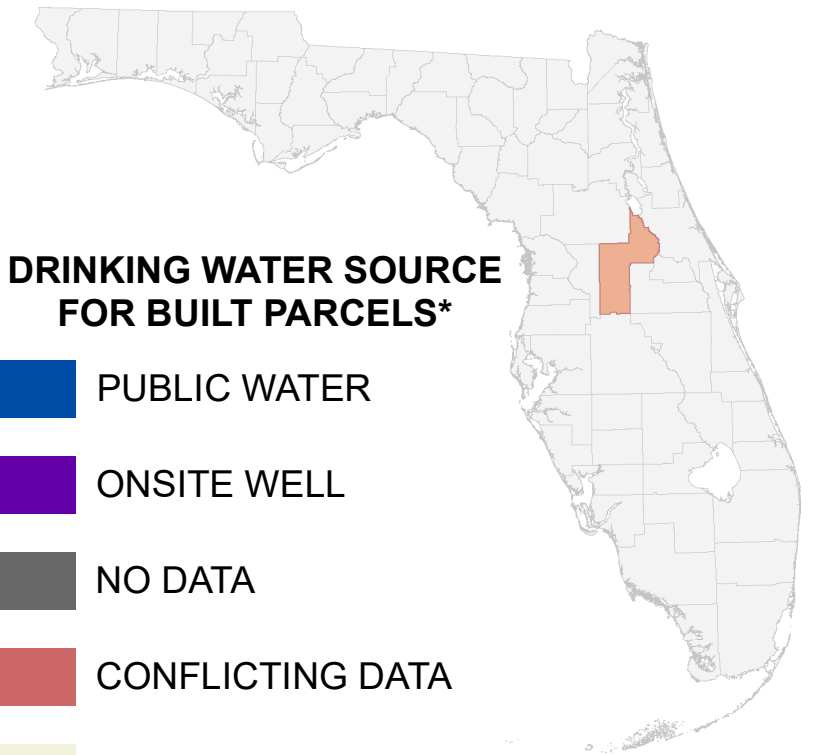


# Florida Water Management Inventory

## Lake County Drinking Water 2022



### DRINKING WATER SOURCE FOR BUILT PARCELS\*

PUBLIC WATER

ONSITE WELL

NO DATA

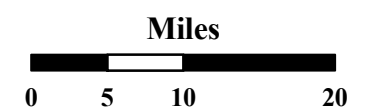
CONFLICTING DATA

NOT BUILT

Interstate

US Highway

\* Includes parcels with unknown Built status. Percentages do not include parcels where drinking water is not applicable.

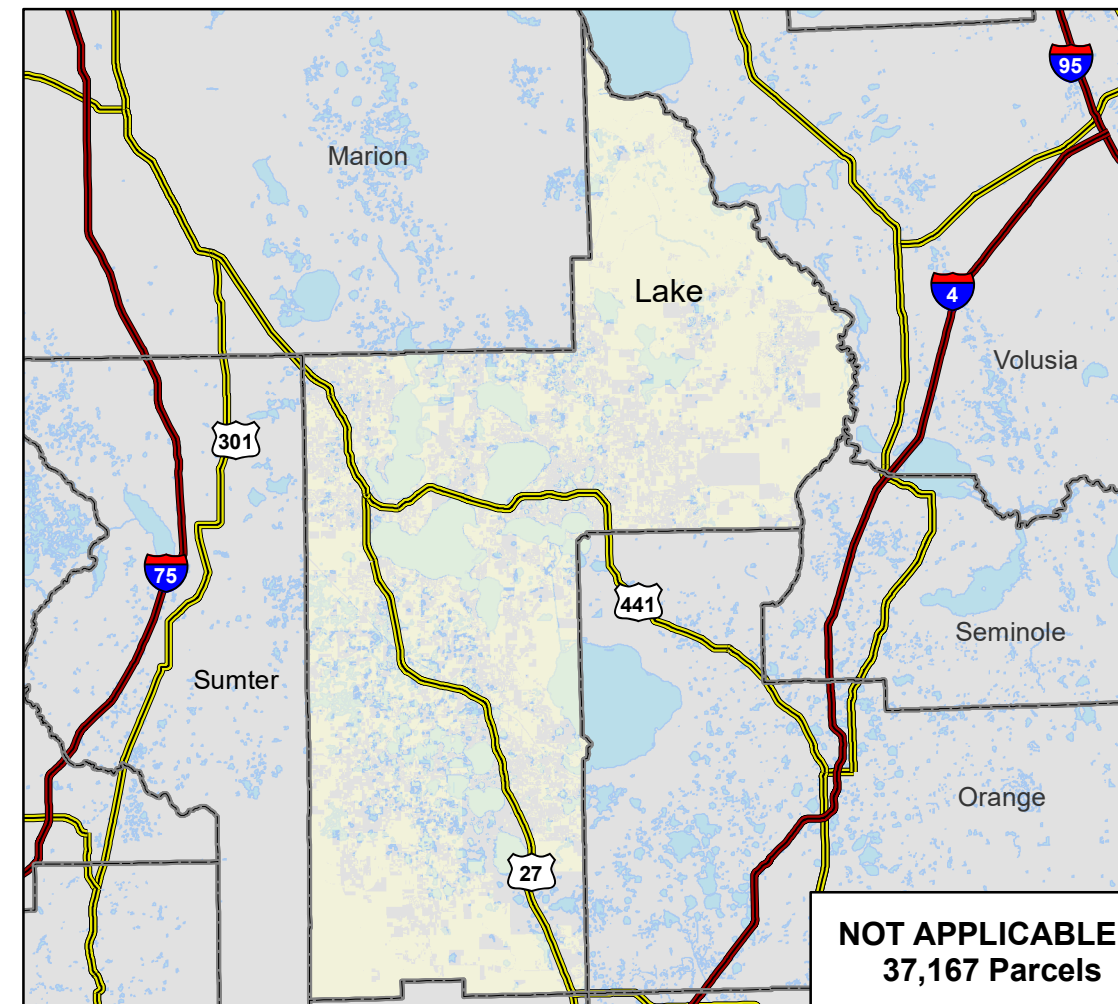
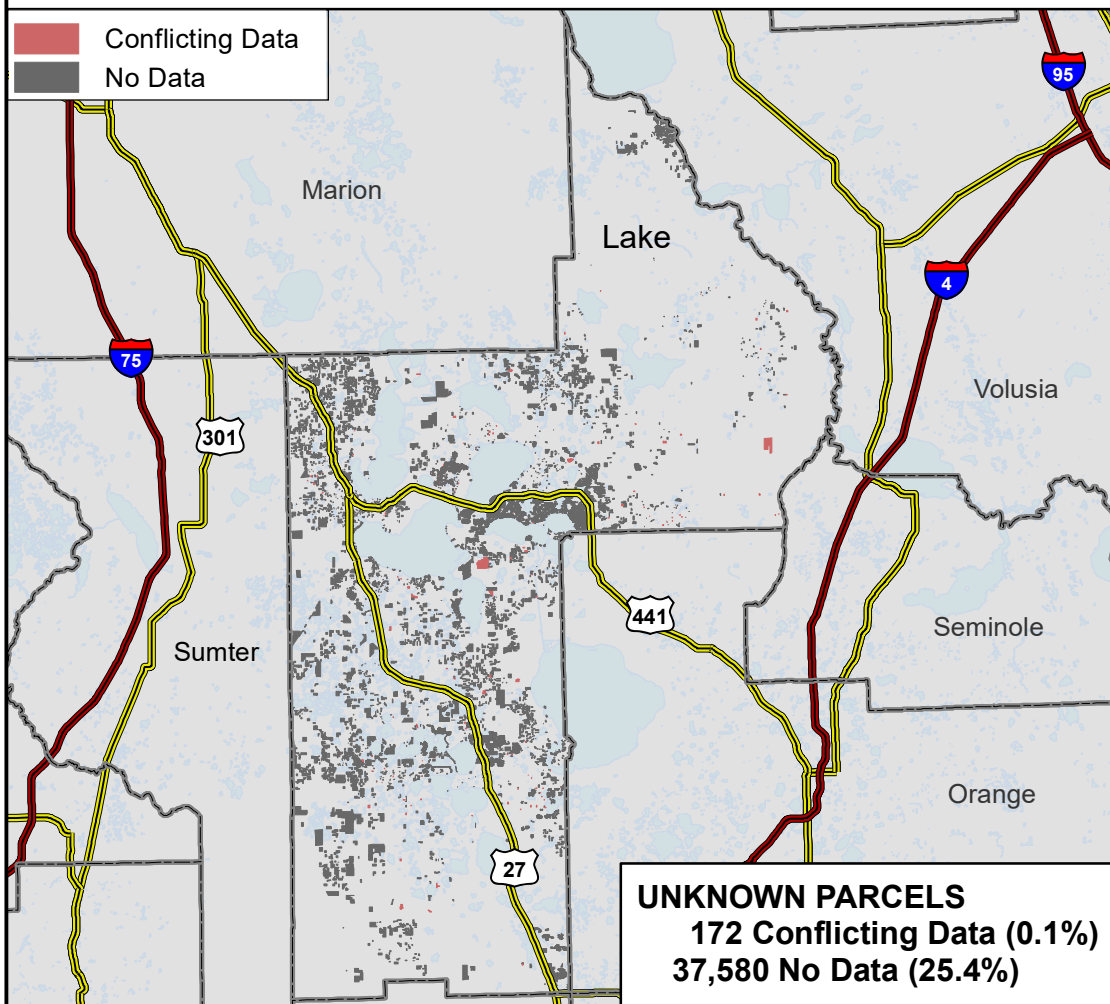
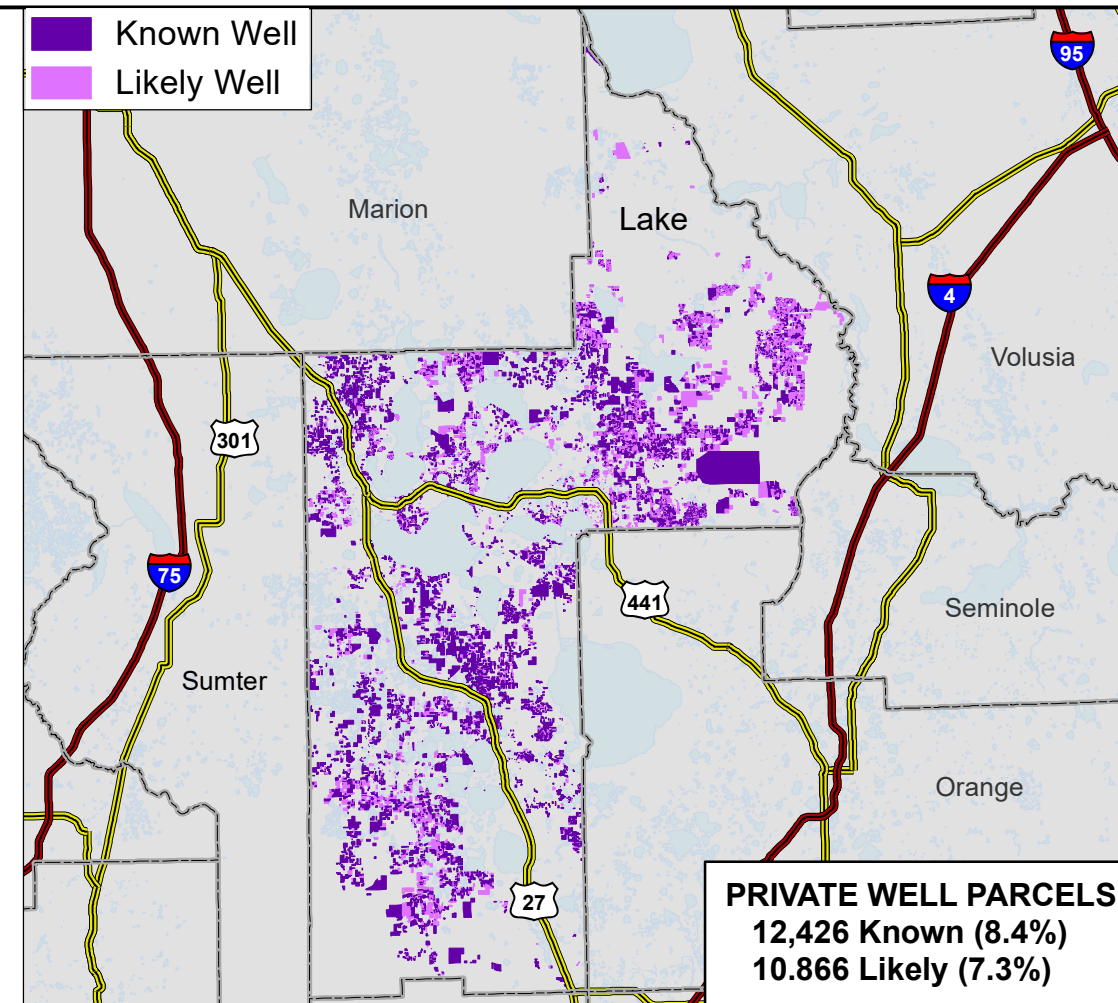
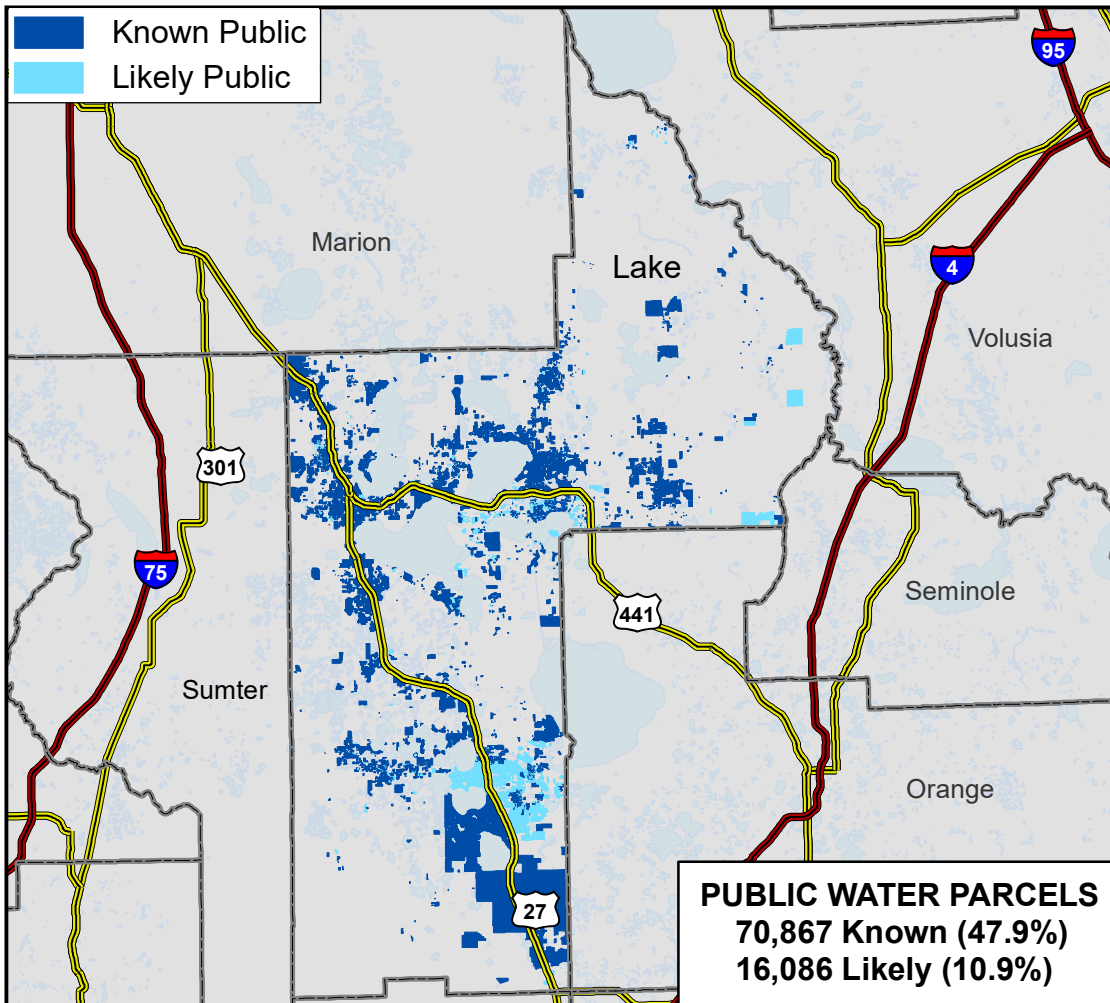


1:800,000  
Albers Equal Area NAD83 HARN

This map is based on sources of varied accuracy and scale provided by multiple organizations. FDOH assumes no liability for the use of this map and associated data.



14Dec2022



Known Public  
 Likely Public

Known Well  
 Likely Well

Conflicting Data  
 No Data