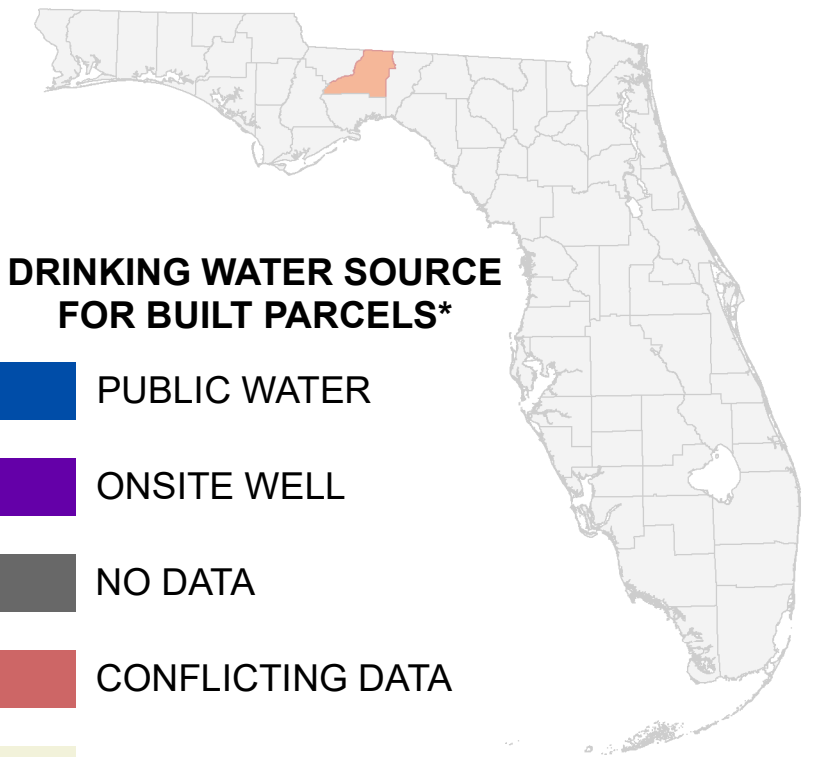


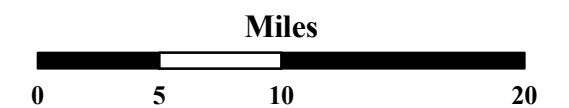
Florida Water Management Inventory

Leon County Drinking Water 2021



DRINKING WATER SOURCE FOR BUILT PARCELS*

- PUBLIC WATER
 - ONSITE WELL
 - NO DATA
 - CONFLICTING DATA
 - NOT BUILT
 - Interstate
 - US Highway
- * Includes parcels with unknown Built status. Percentages do not include parcels where drinking water is not applicable.



1:500,000
Albers Equal Area NAD83 HARN

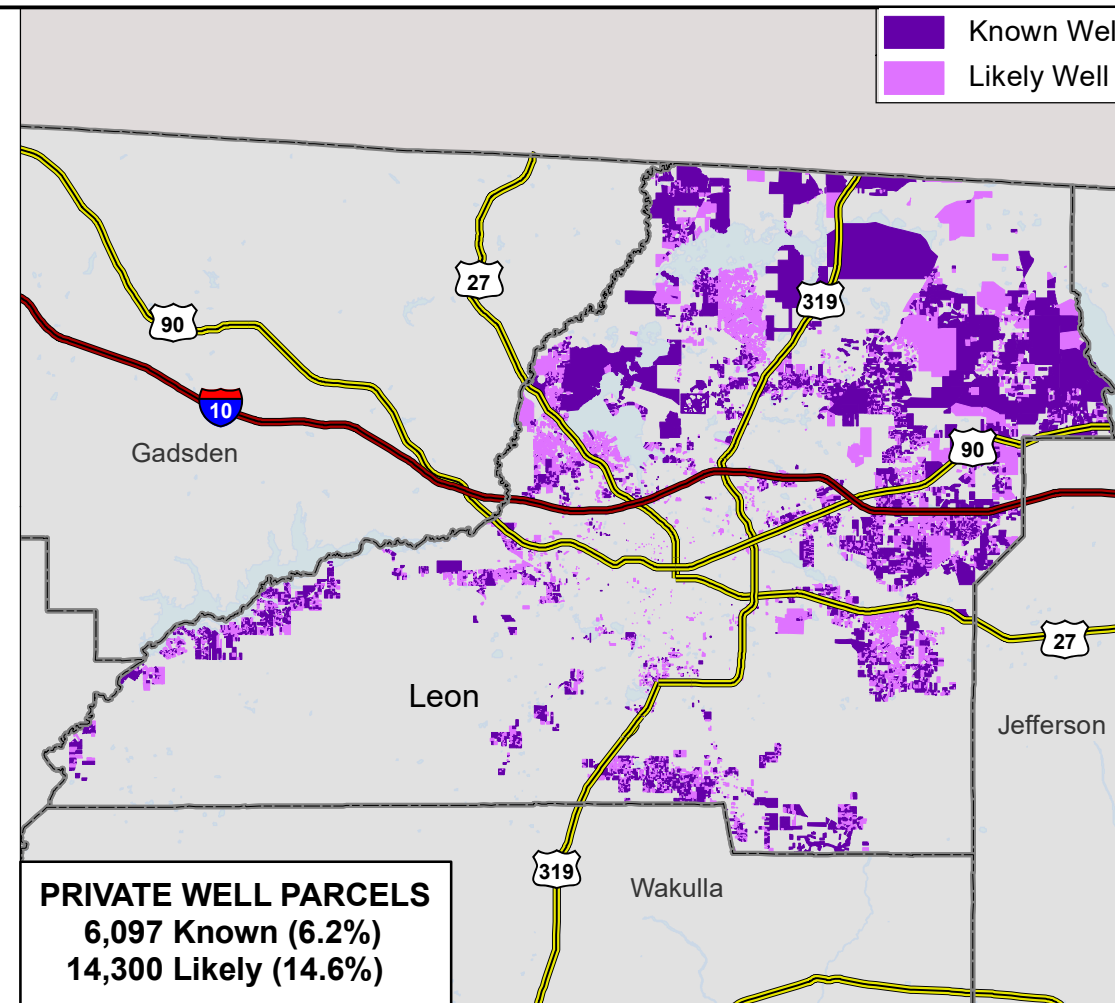
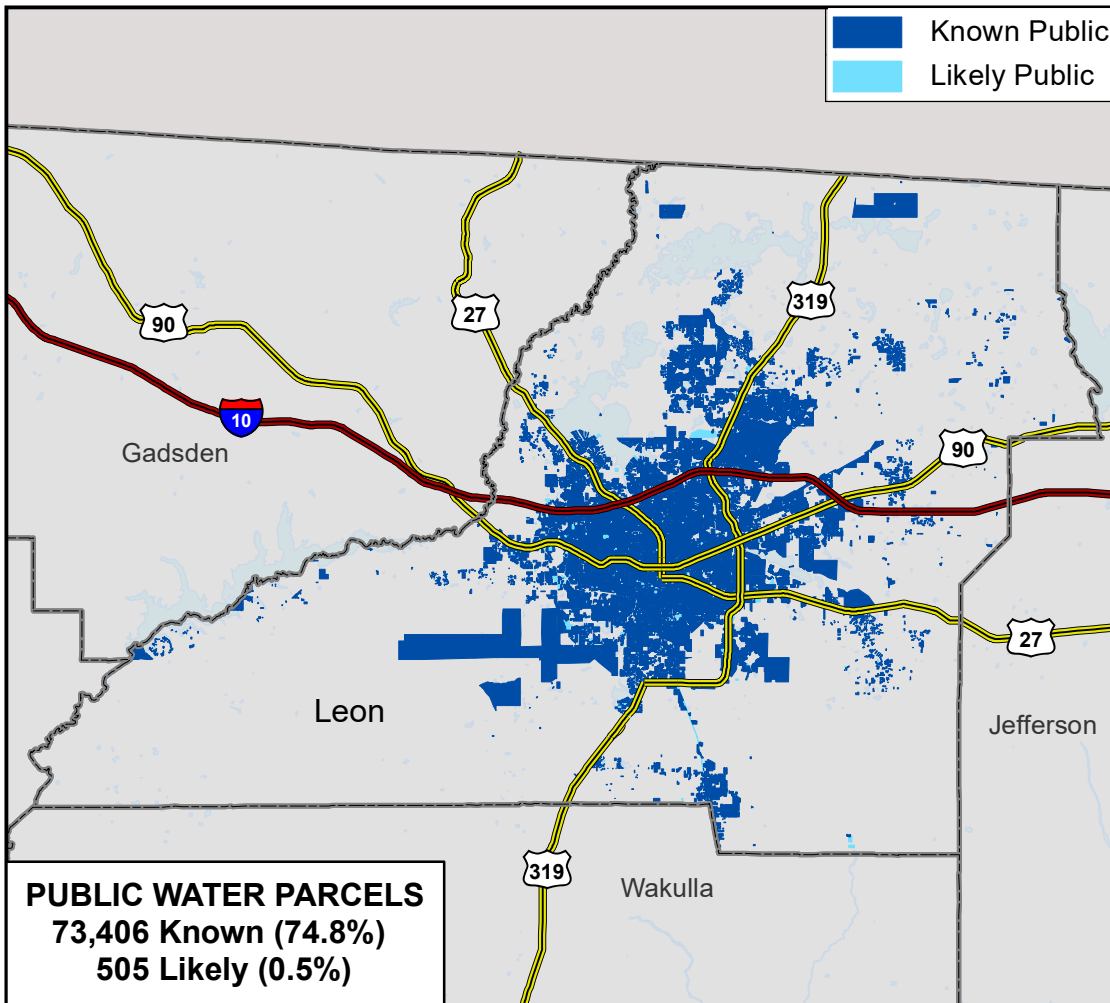
This map is based on sources of varied accuracy and scale provided by multiple organizations. FDOH assumes no liability for the use of this map and associated data.



15Dec2021

- Known Public
- Likely Public

- Known Well
- Likely Well



- Conflicting Data
- No Data

