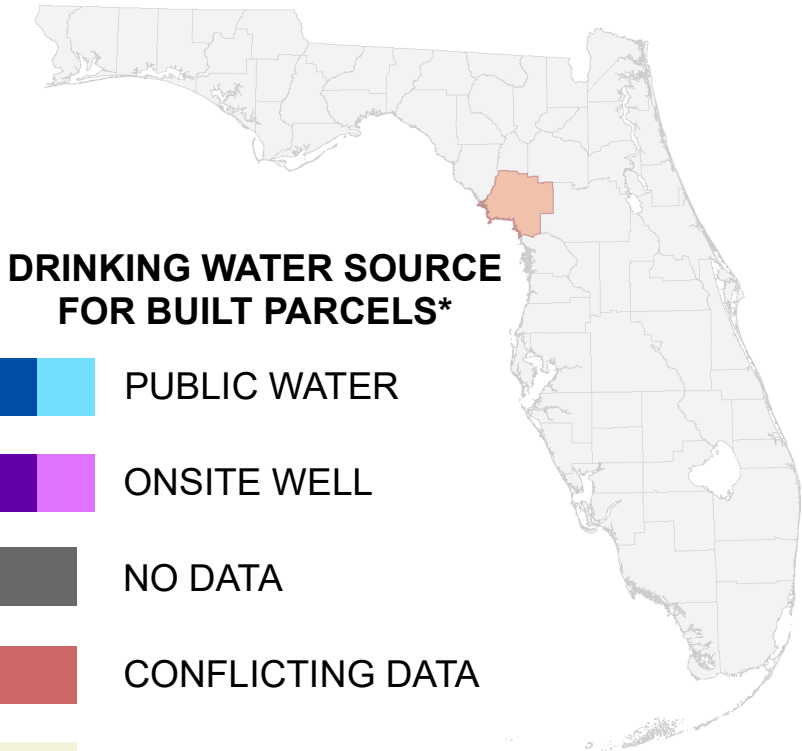
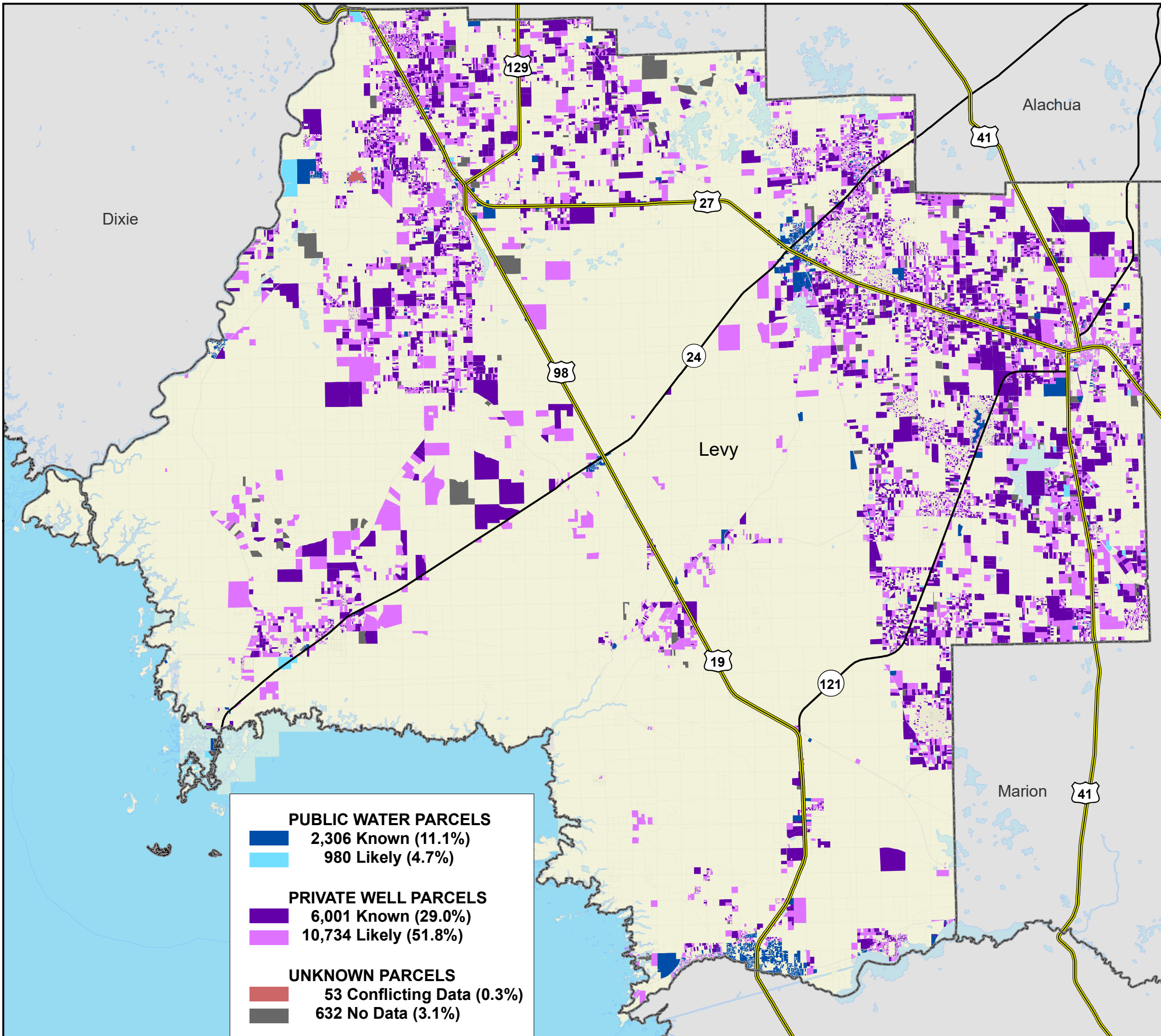


Florida Water Management Inventory

Levy County Drinking Water 2022



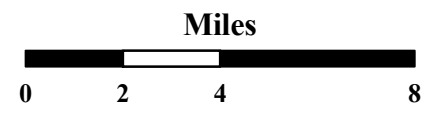
DRINKING WATER SOURCE FOR BUILT PARCELS*

- PUBLIC WATER
- ONSITE WELL
- NO DATA
- CONFLICTING DATA
- NOT BUILT

- Interstate
- US Highway
- State Road

* Includes parcels with unknown Built status. Percentages do not include parcels where drinking water is not applicable.

PUBLIC WATER PARCELS	
	2,306 Known (11.1%)
	980 Likely (4.7%)
PRIVATE WELL PARCELS	
	6,001 Known (29.0%)
	10,734 Likely (51.8%)
UNKNOWN PARCELS	
	53 Conflicting Data (0.3%)
	632 No Data (3.1%)



1:250,000
Albers Equal Area NAD83 HARN

This map is based on sources of varied accuracy and scale provided by multiple organizations. FDOH assumes no liability for the use of this map and associated data.



02Mar2022