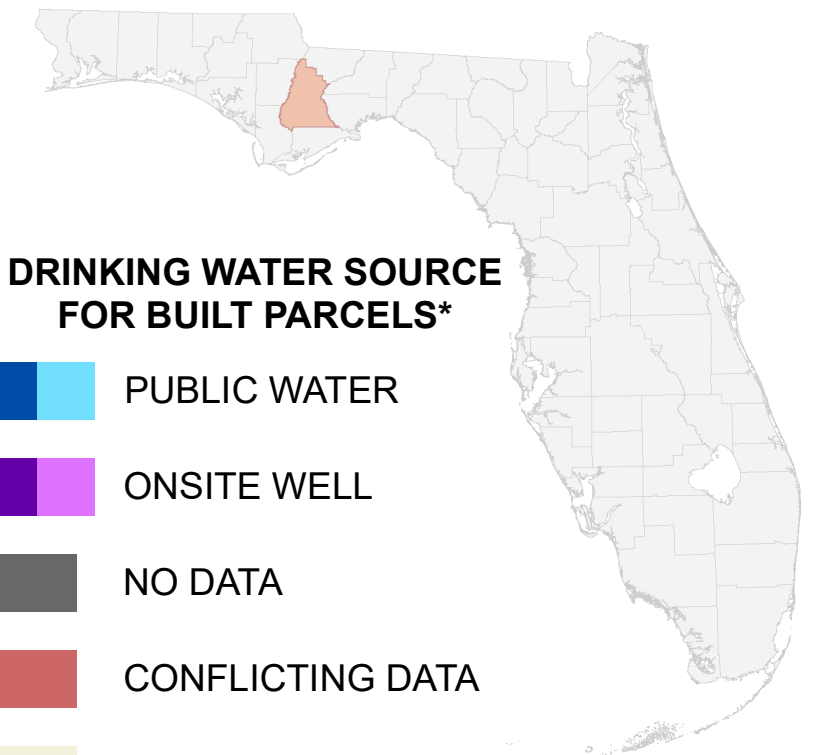


# Florida Water Management Inventory

## Liberty County Drinking Water 2021



### DRINKING WATER SOURCE FOR BUILT PARCELS\*

PUBLIC WATER

ONSITE WELL

NO DATA

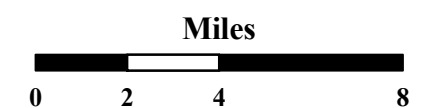
CONFLICTING DATA

NOT BUILT

Interstate \* Includes parcels with unknown Built status. Percentages do not include parcels where drinking water is not applicable.

US Highway

State Road

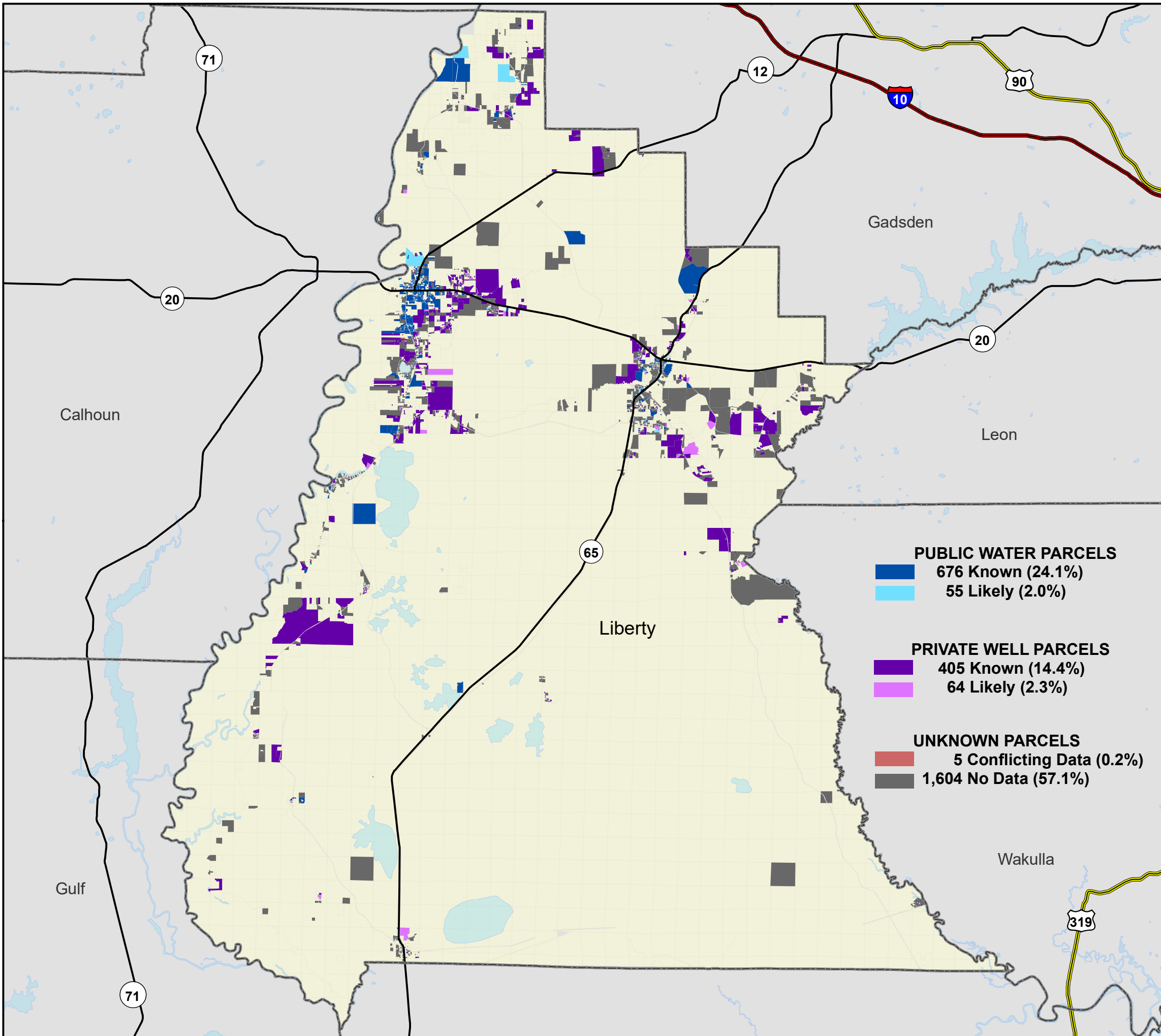


1:265,000  
Albers Equal Area NAD83 HARN

This map is based on sources of varied accuracy and scale provided by multiple organizations. FDOH assumes no liability for the use of this map and associated data.



15Nov2021



PUBLIC WATER PARCELS	
	676 Known (24.1%)
	55 Likely (2.0%)
PRIVATE WELL PARCELS	
	405 Known (14.4%)
	64 Likely (2.3%)
UNKNOWN PARCELS	
	5 Conflicting Data (0.2%)
	1,604 No Data (57.1%)