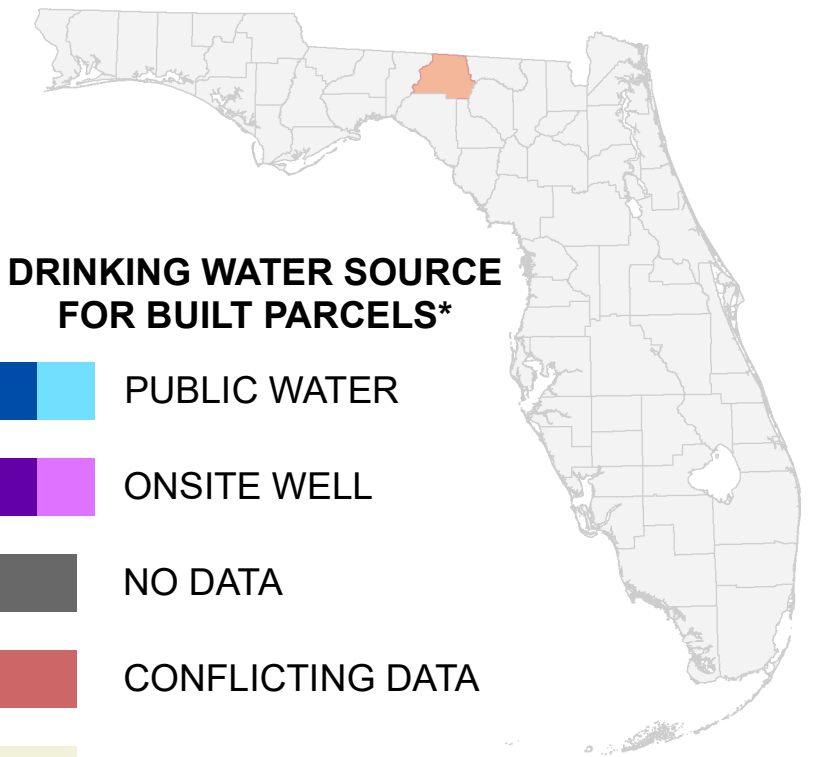


Florida Water Management Inventory

Madison County Drinking Water 2022



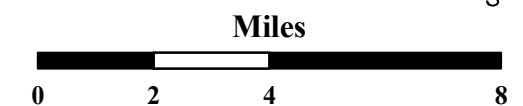
DRINKING WATER SOURCE FOR BUILT PARCELS*

- PUBLIC WATER
- ONSITE WELL
- NO DATA
- CONFLICTING DATA
- NOT BUILT

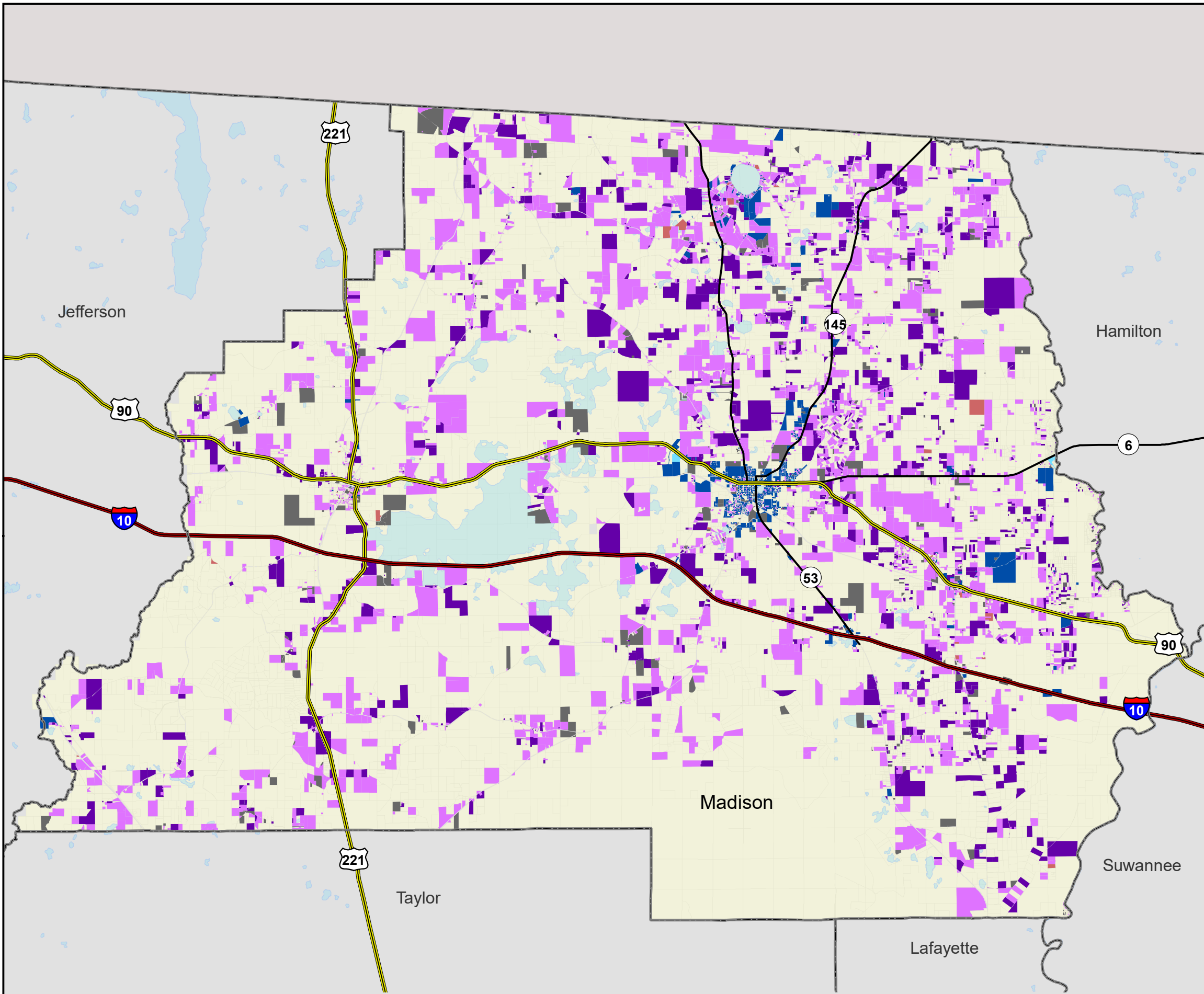
Interstate * Includes parcels with unknown Built status. Percentages do not include parcels where drinking water is not applicable.

US Highway

State Road



1:210,000
Albers Equal Area NAD83 HARN



PUBLIC WATER PARCELS		PRIVATE WELL PARCELS		UNKNOWN PARCELS	
	1,787 Known (24.6%)		1,080 Known (14.9%)		44 Conflicting Data (0.6%)
	20 Likely (0.3%)		3,766 Likely (52.0%)		555 No Data (7.6%)

This map is based on sources of varied accuracy and scale provided by multiple organizations. FDOH assumes no liability for the use of this map and associated data.



02Feb2022