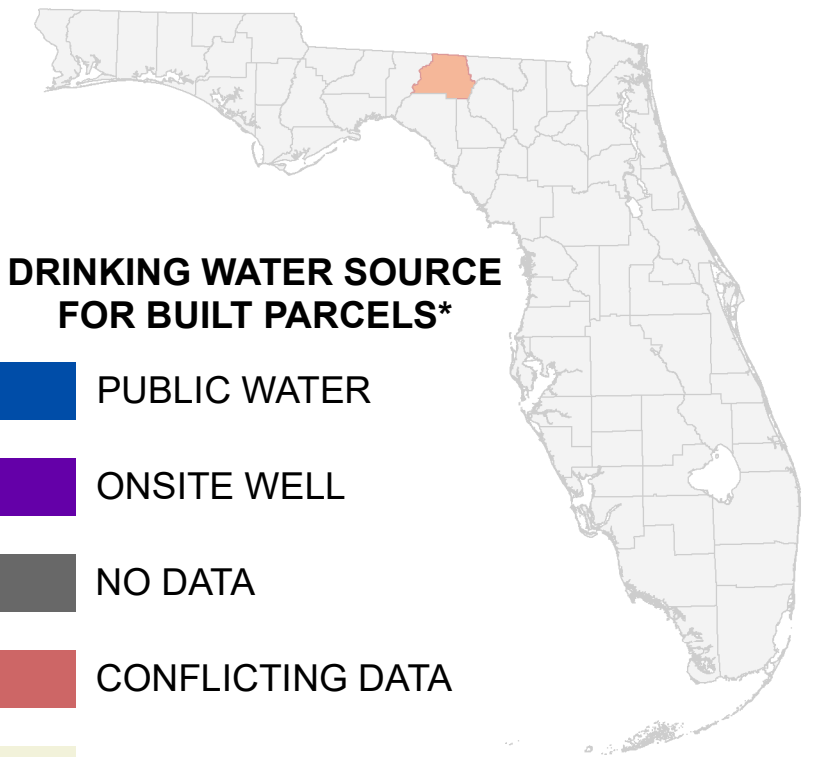


# Florida Water Management Inventory

## Madison County Drinking Water 2022

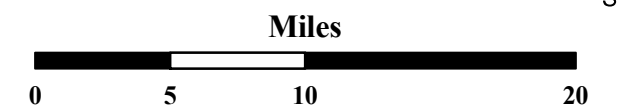


### DRINKING WATER SOURCE FOR BUILT PARCELS\*

- PUBLIC WATER
- ONSITE WELL
- NO DATA
- CONFLICTING DATA
- NOT BUILT

\* Includes parcels with unknown Built status. Percentages do not include parcels where drinking water is not applicable.

- Interstate
- US Highway



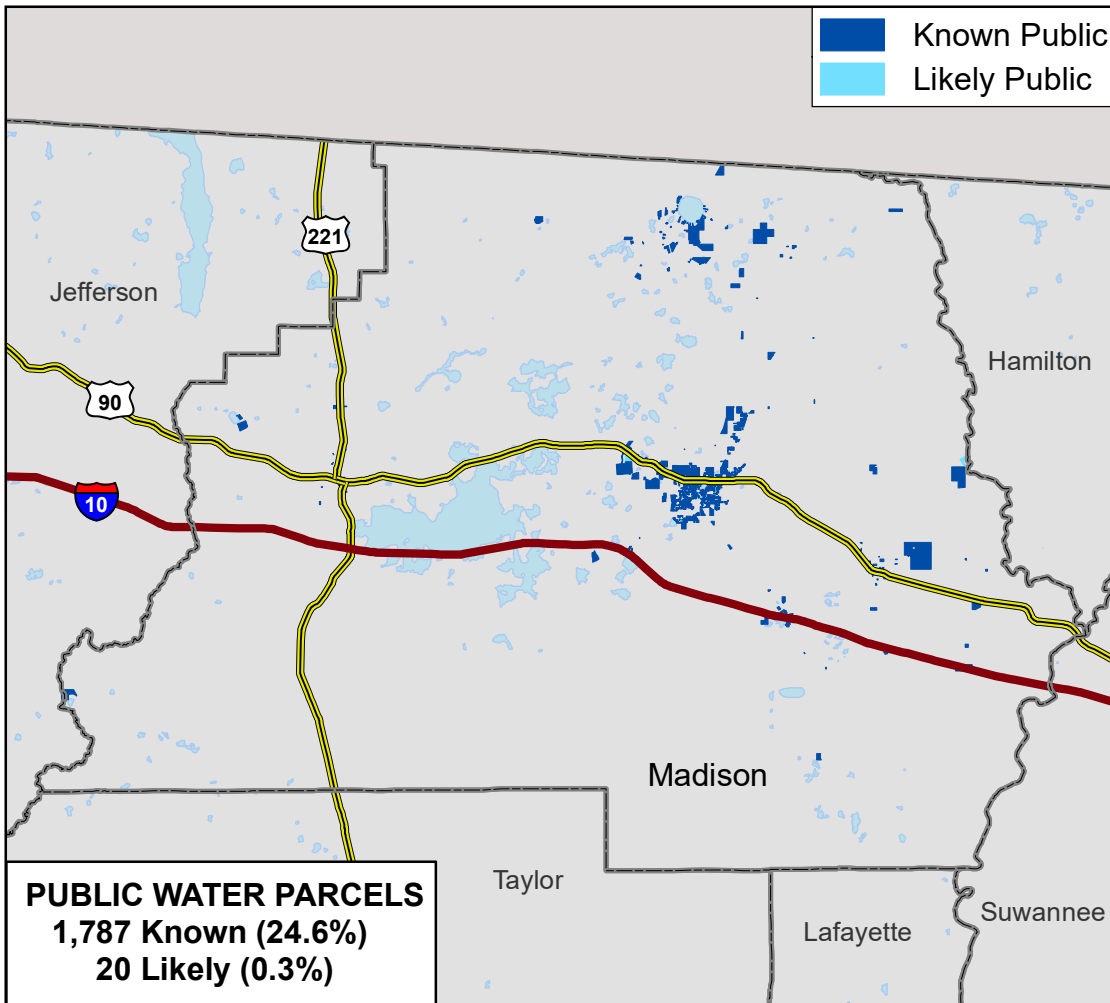
1:450,000  
Albers Equal Area NAD83 HARN

This map is based on sources of varied accuracy and scale provided by multiple organizations. FDOH assumes no liability for the use of this map and associated data.



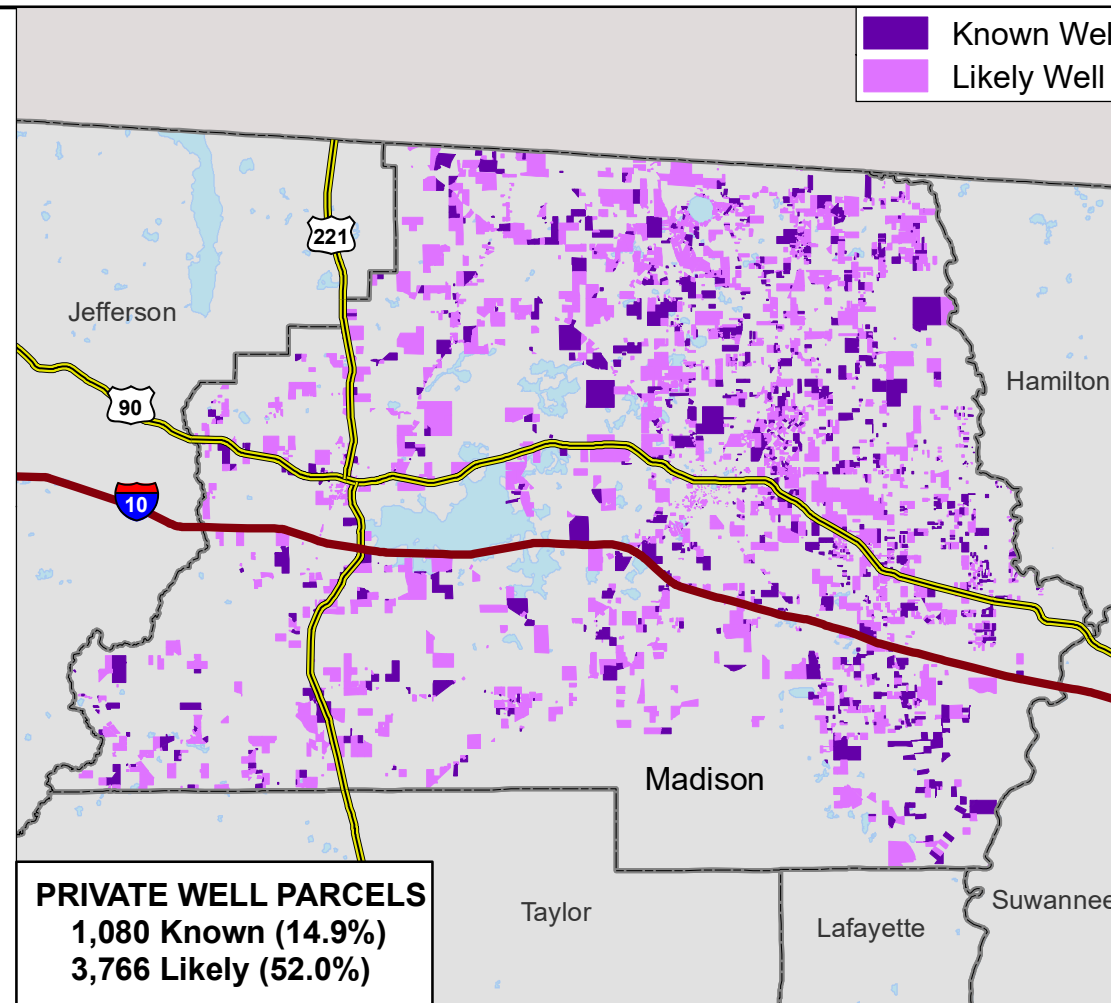
03Feb2022

- Known Public
- Likely Public



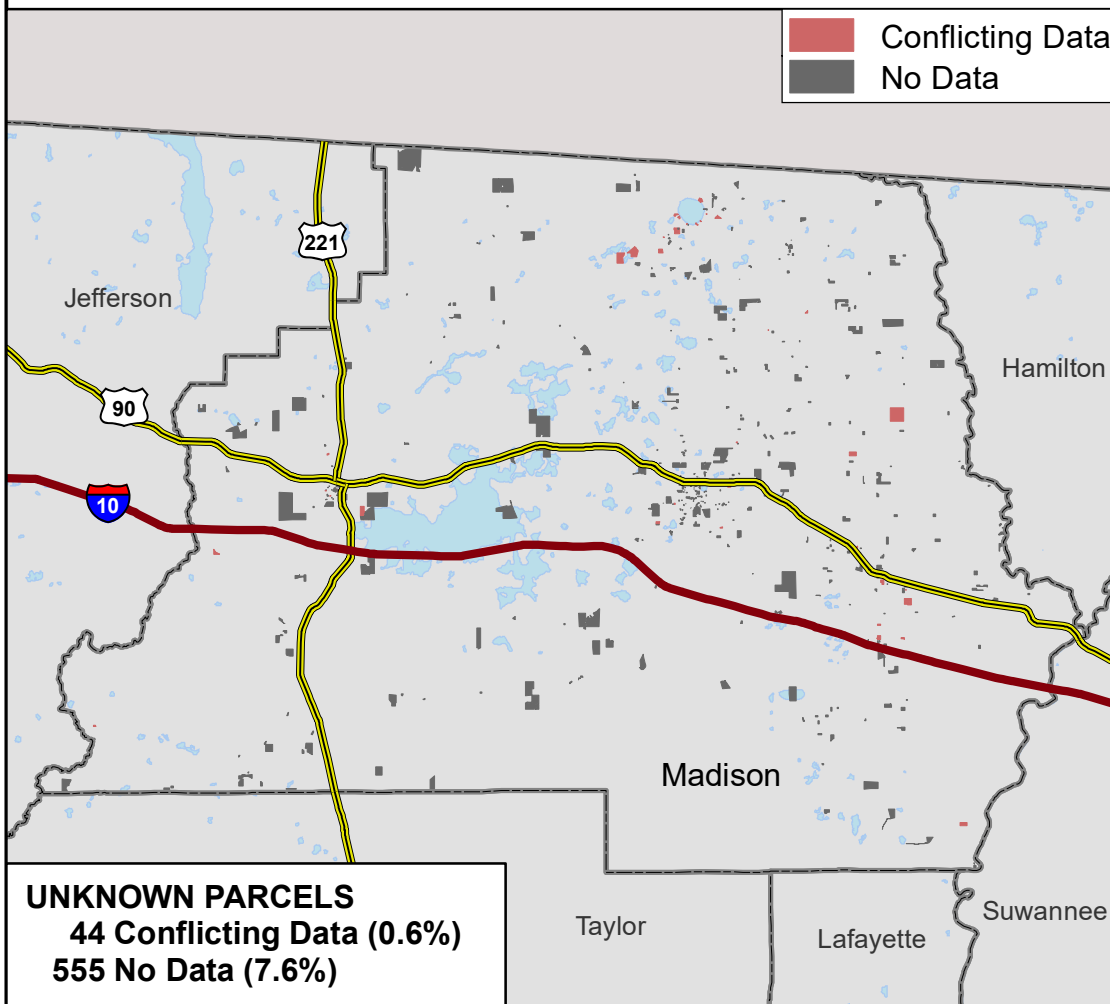
**PUBLIC WATER PARCELS**  
1,787 Known (24.6%)  
20 Likely (0.3%)

- Known Well
- Likely Well

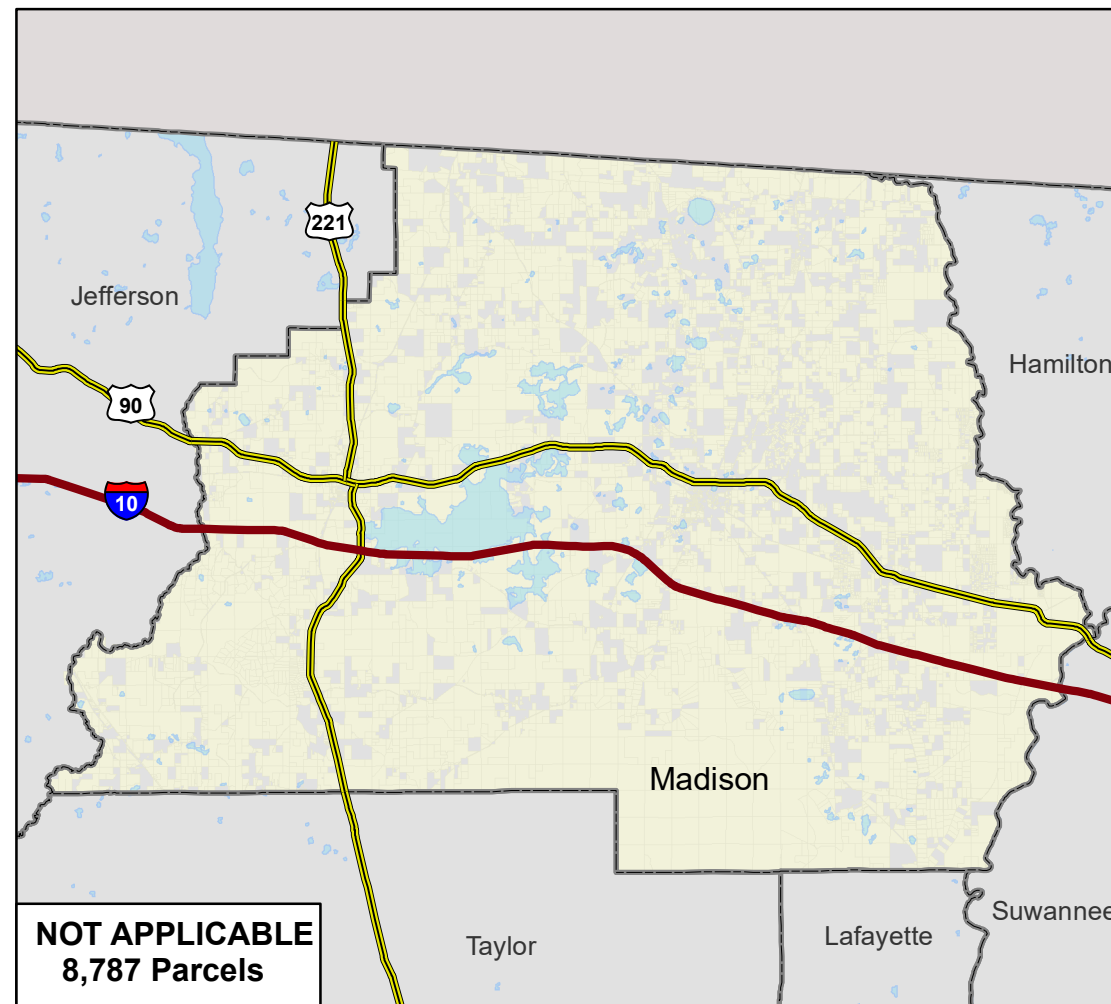


**PRIVATE WELL PARCELS**  
1,080 Known (14.9%)  
3,766 Likely (52.0%)

- Conflicting Data
- No Data



**UNKNOWN PARCELS**  
44 Conflicting Data (0.6%)  
555 No Data (7.6%)



**NOT APPLICABLE**  
8,787 Parcels