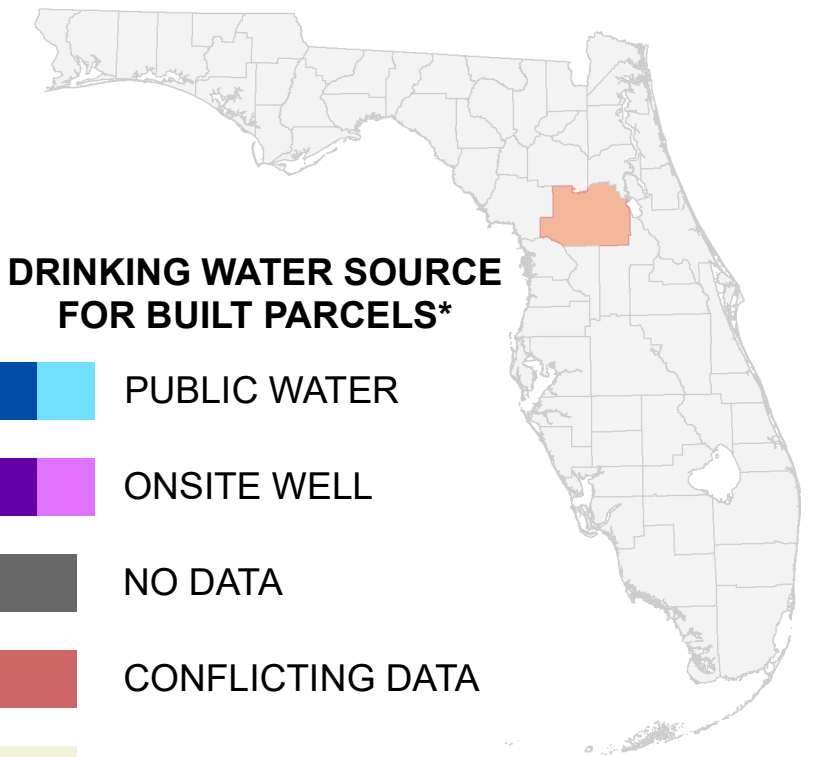


Florida Water Management Inventory

Marion County Drinking Water 2022

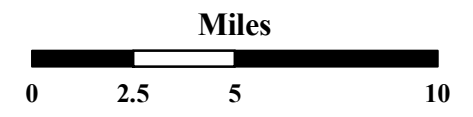


DRINKING WATER SOURCE FOR BUILT PARCELS*

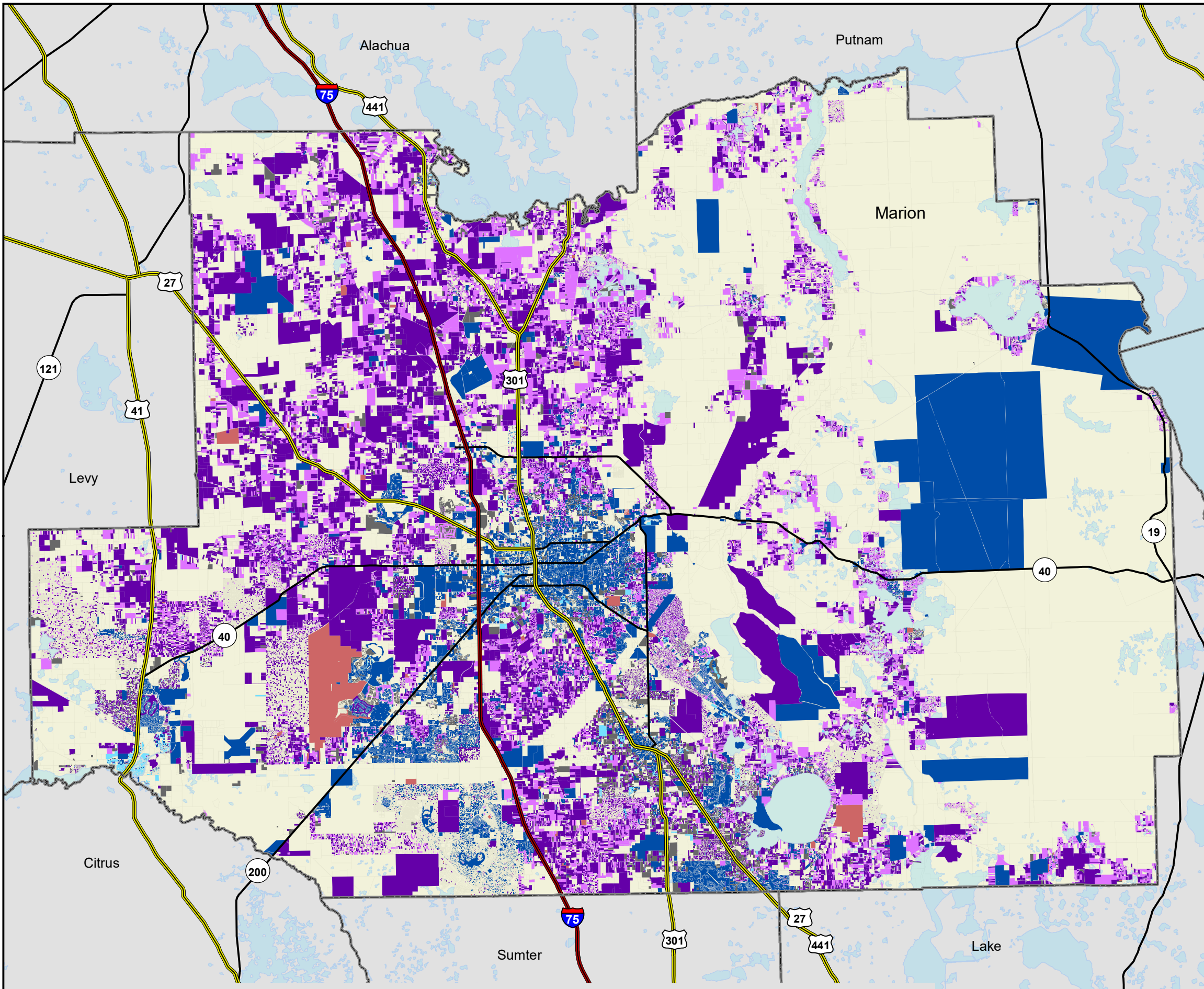
- PUBLIC WATER
- ONSITE WELL
- NO DATA
- CONFLICTING DATA
- NOT BUILT

Interstate
 US Highway
 State Road

* Includes parcels with unknown Built status. Percentages do not include parcels where drinking water is not applicable.



1:300,000
Albers Equal Area NAD83 HARN



PUBLIC WATER PARCELS		PRIVATE WELL PARCELS		UNKNOWN PARCELS	
	72,170 Known (44.7%)		34,708 Known (21.5%)		365 Conflicting Data (0.2%)
	4,226 Likely (2.6%)		32,259 Likely (20.0%)		17,757 No Data (11.0%)

This map is based on sources of varied accuracy and scale provided by multiple organizations. FDOH assumes no liability for the use of this map and associated data.



02Sep2022