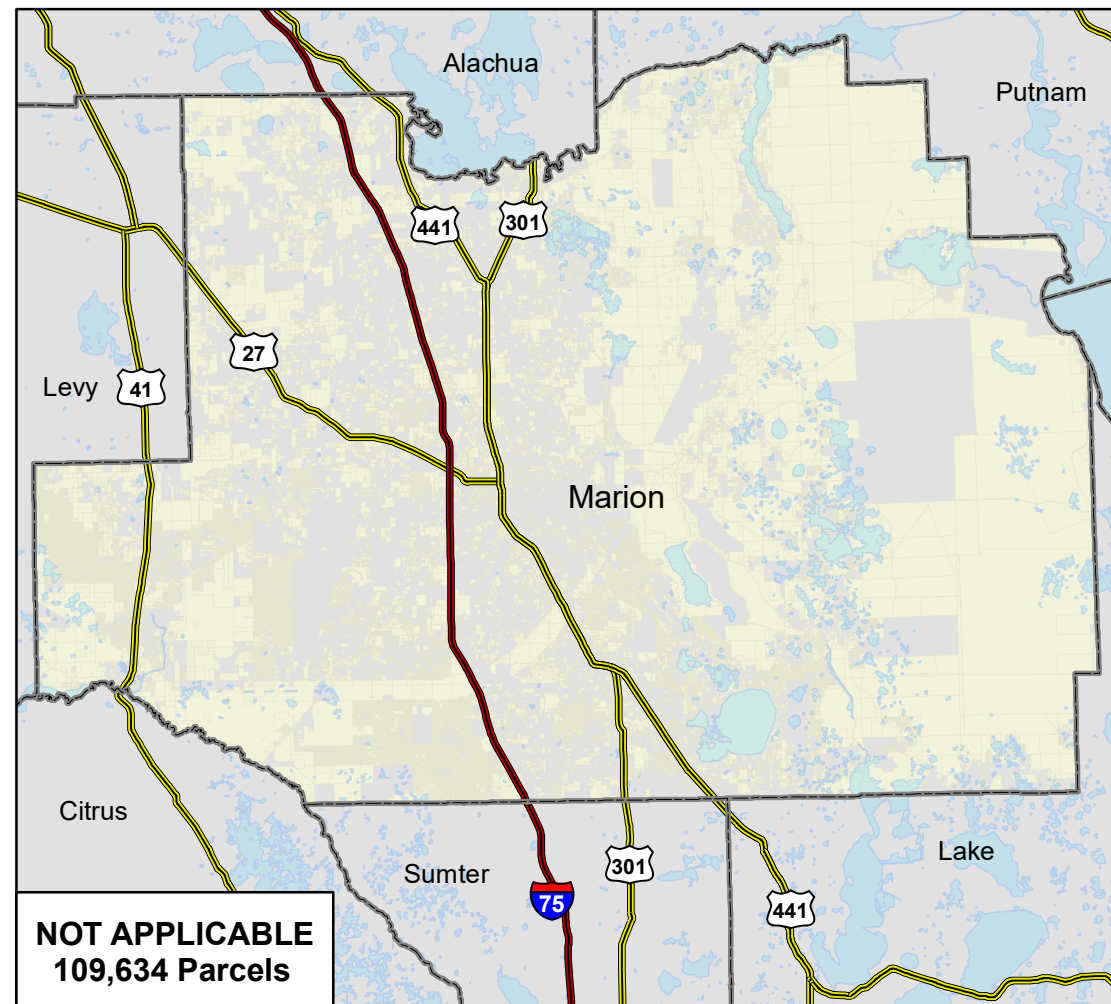
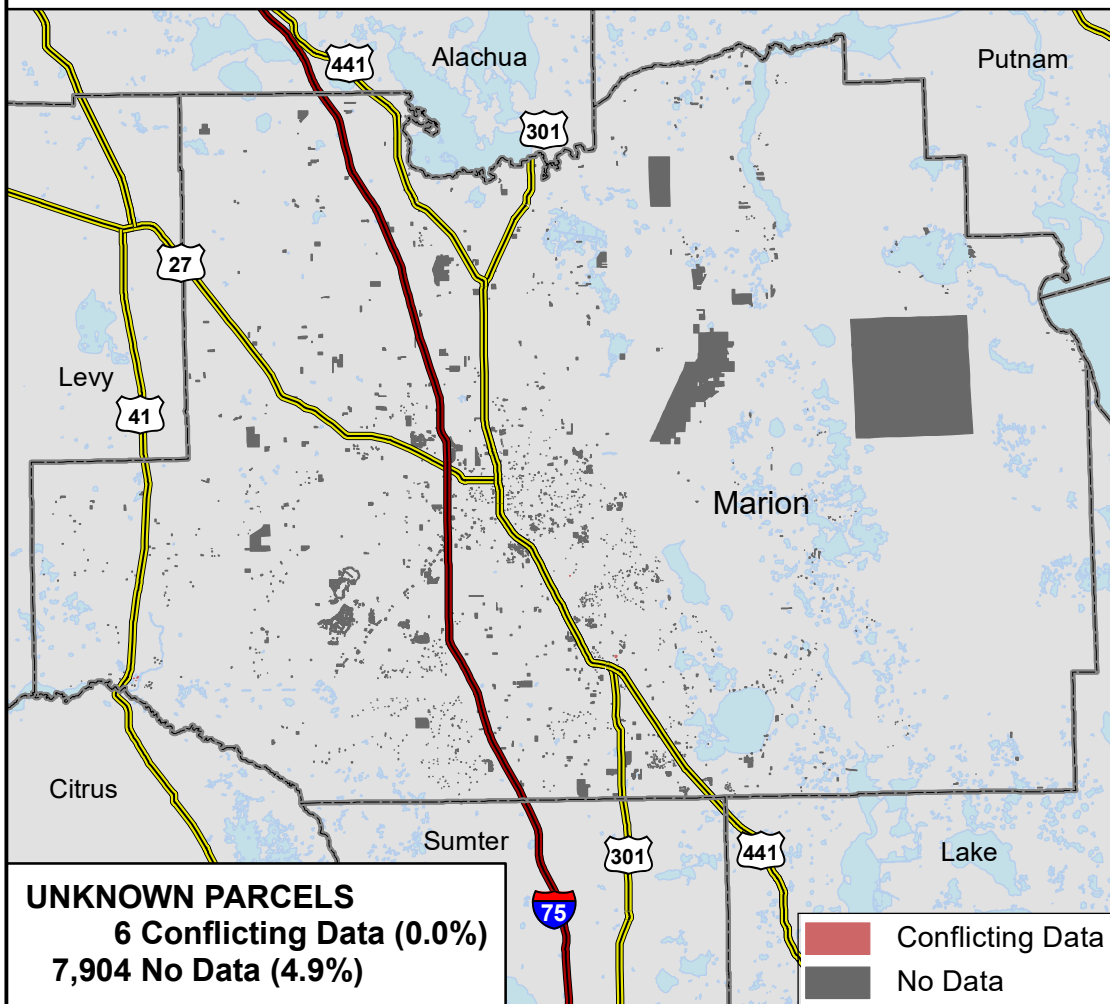
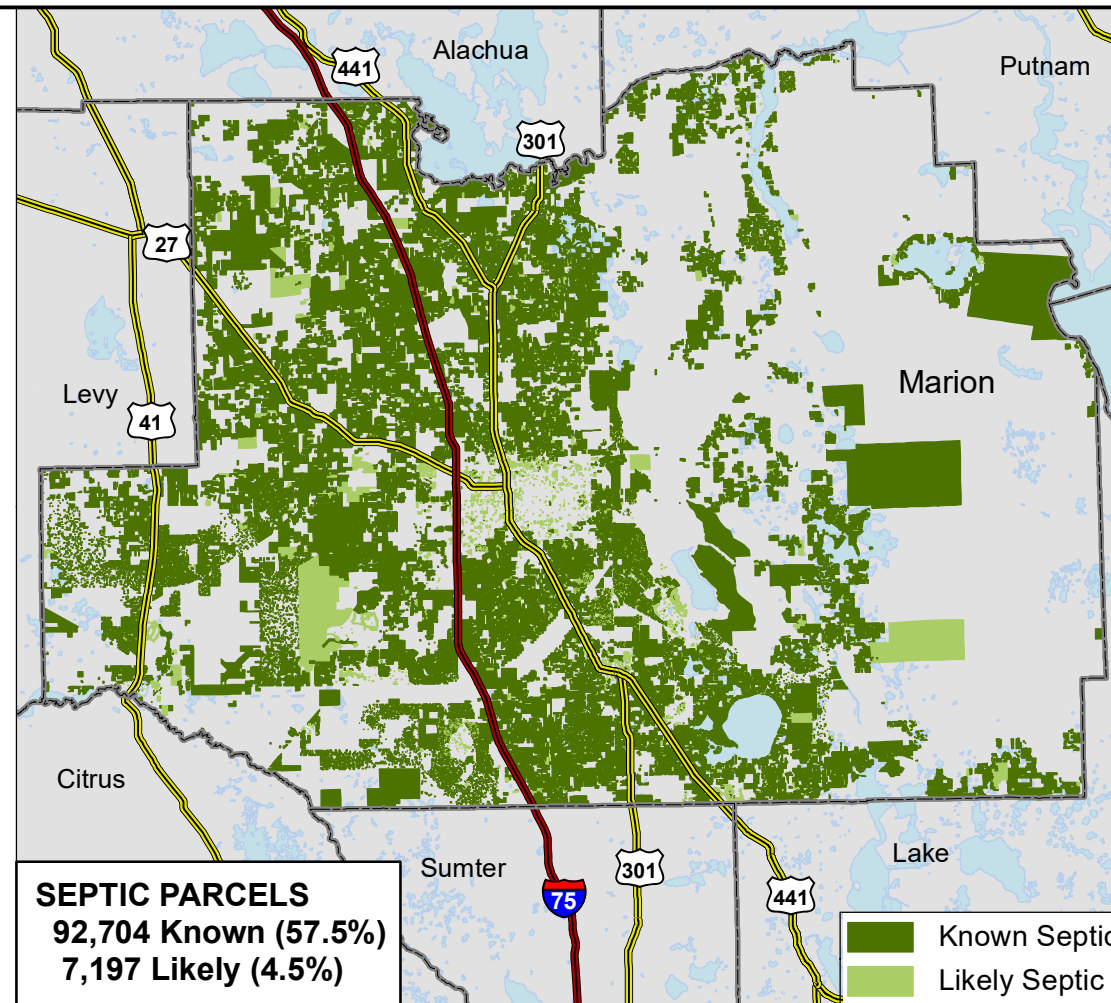
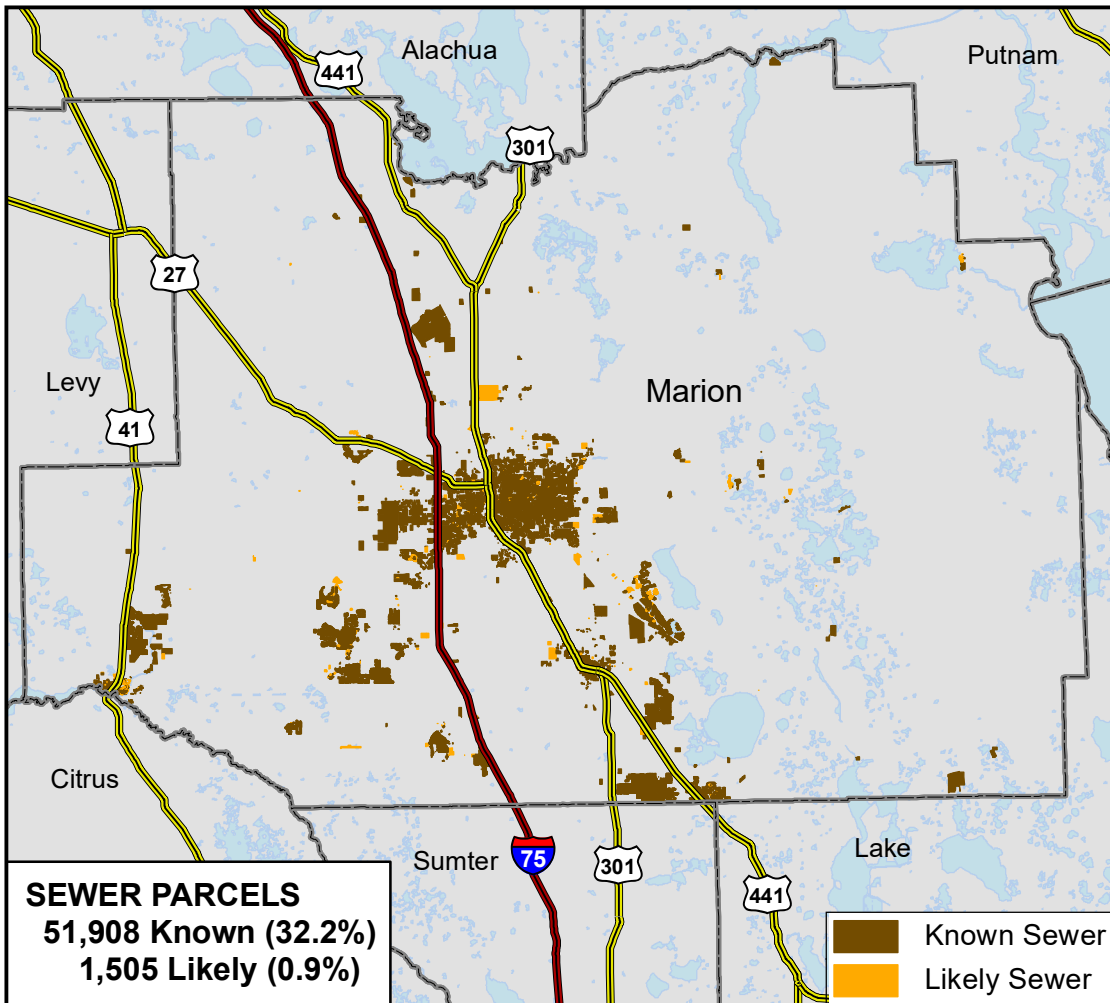
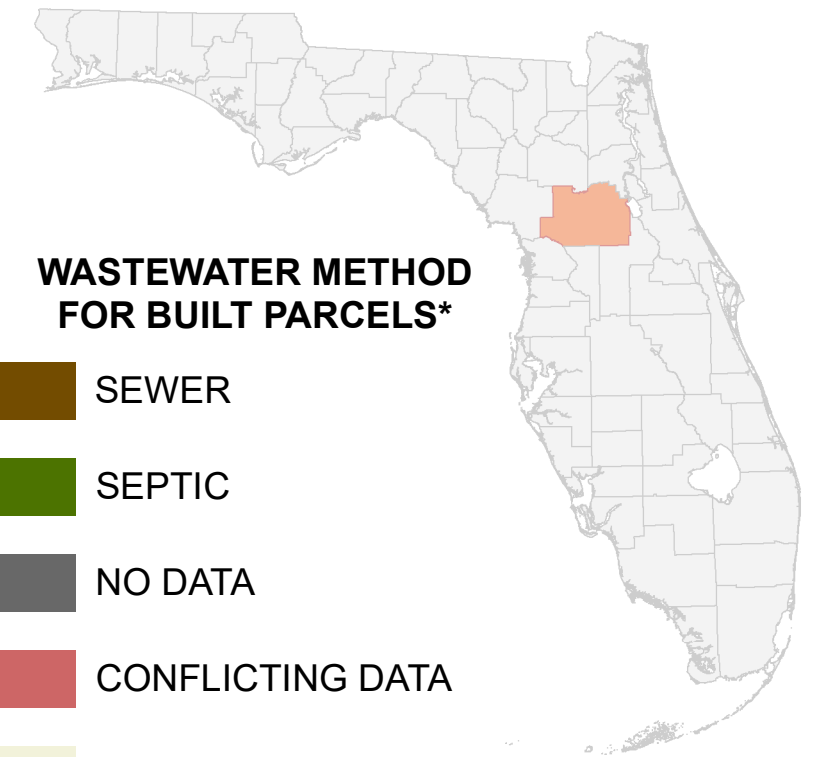


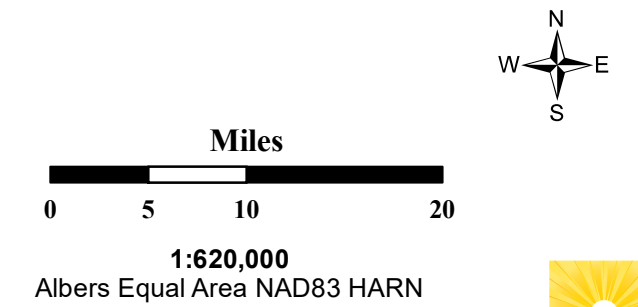
# Florida Water Management Inventory

## Marion County Wastewater 2022



### WASTEWATER METHOD FOR BUILT PARCELS\*

- SEWER
  - SEPTIC
  - NO DATA
  - CONFLICTING DATA
  - NOT BUILT
  - Interstate
  - US Highway
- \* Includes parcels with unknown Built status. Percentages do not include parcels where wastewater is not applicable.



This map is based on sources of varied accuracy and scale provided by multiple organizations. FDOH assumes no liability for the use of this map and associated data.

