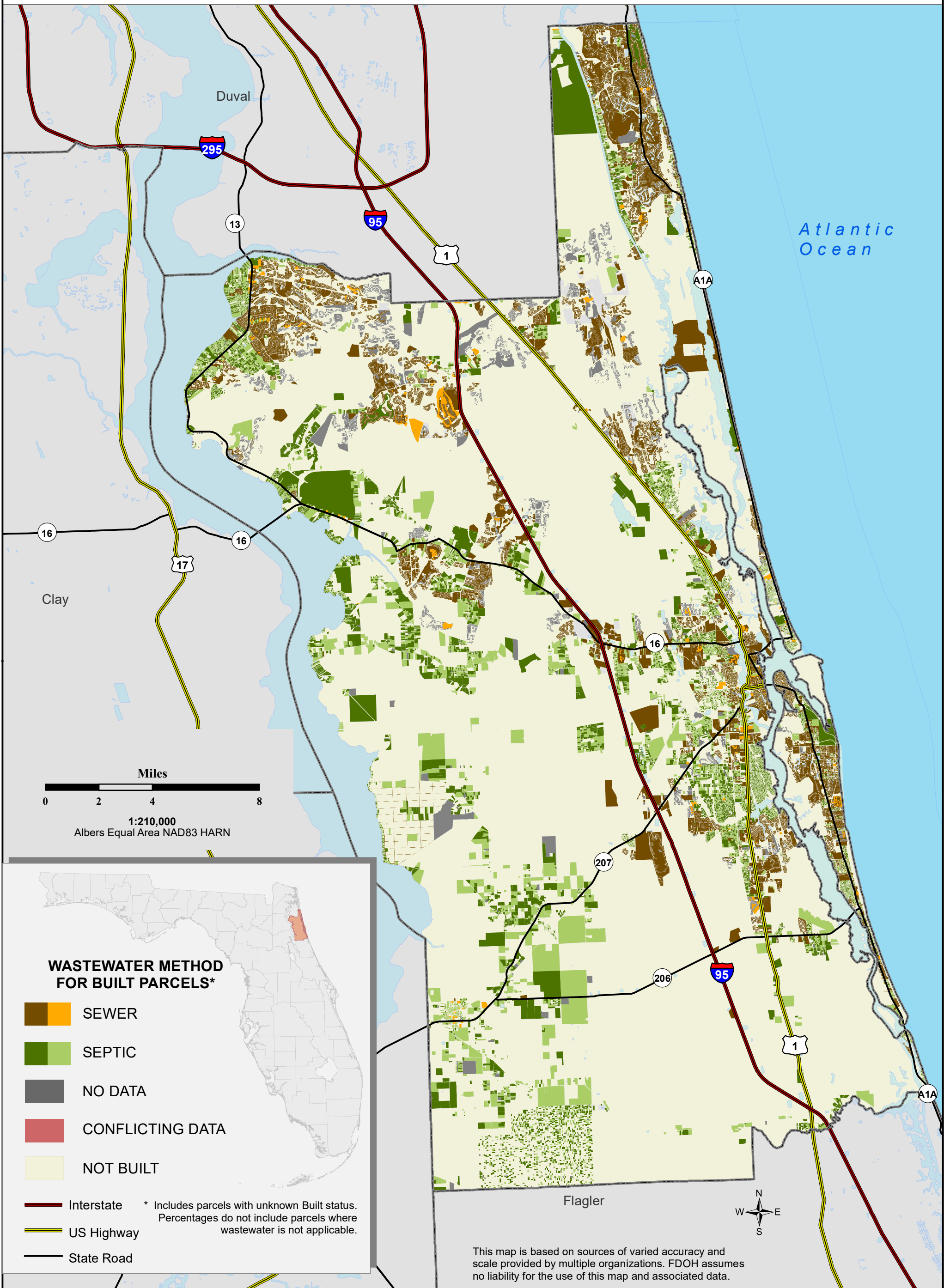


Florida Water Management Inventory

St. Johns County Wastewater 2022



SEWER PARCELS
 55,276 Known (54.8%)
 601 Likely (0.6%)

SEPTIC PARCELS
 10,660 Known (10.6%)
 14,279 Likely (14.2%)

UNKNOWN PARCELS
 3 Conflicting Data (0.0%)
 19,979 No Data (19.8%)