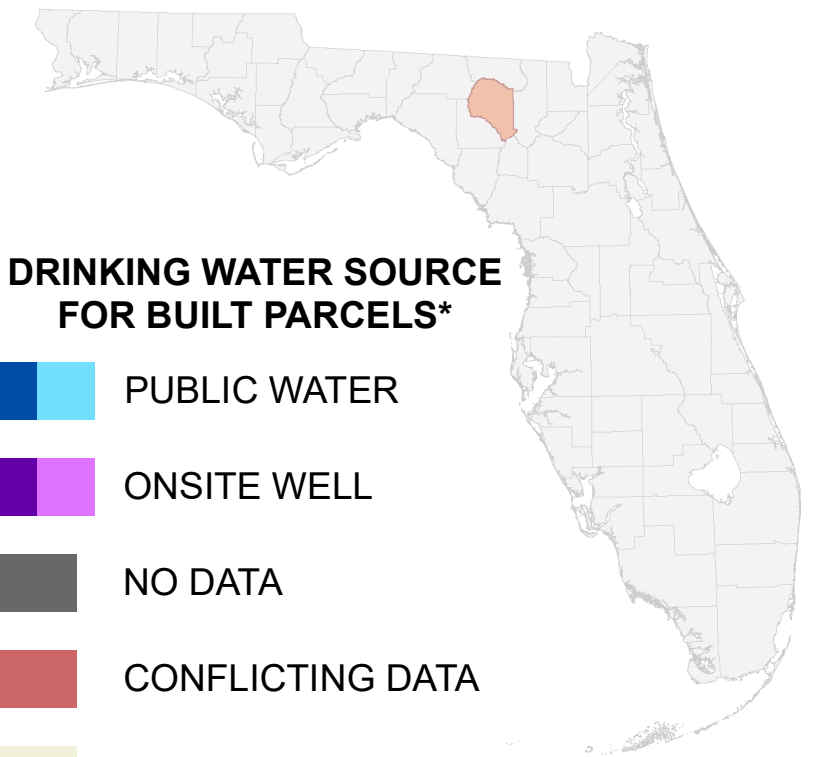


Florida Water Management Inventory

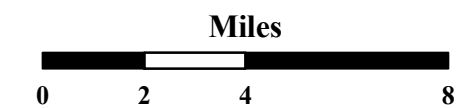
Suwannee County Drinking Water 2022



DRINKING WATER SOURCE FOR BUILT PARCELS*

- PUBLIC WATER
- ONSITE WELL
- NO DATA
- CONFLICTING DATA
- NOT BUILT

Interstate * Includes parcels with unknown Built status. Percentages do not include parcels where drinking water is not applicable.
 US Highway
 State Road

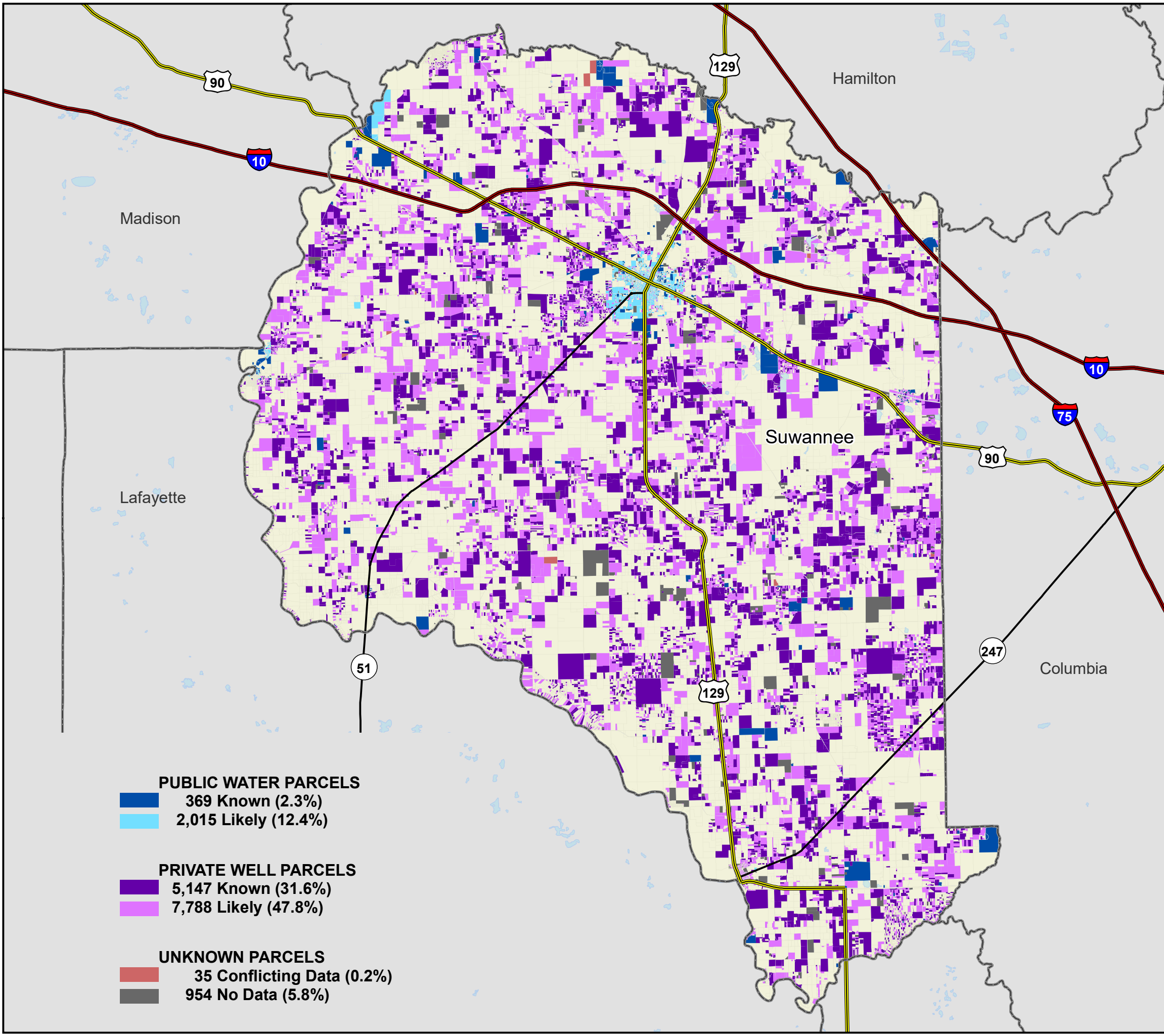


1:240,000
 Albers Equal Area NAD83 HARN

This map is based on sources of varied accuracy and scale provided by multiple organizations. FDOH assumes no liability for the use of this map and associated data.



02Feb2022



PUBLIC WATER PARCELS	
	369 Known (2.3%)
	2,015 Likely (12.4%)
PRIVATE WELL PARCELS	
	5,147 Known (31.6%)
	7,788 Likely (47.8%)
UNKNOWN PARCELS	
	35 Conflicting Data (0.2%)
	954 No Data (5.8%)