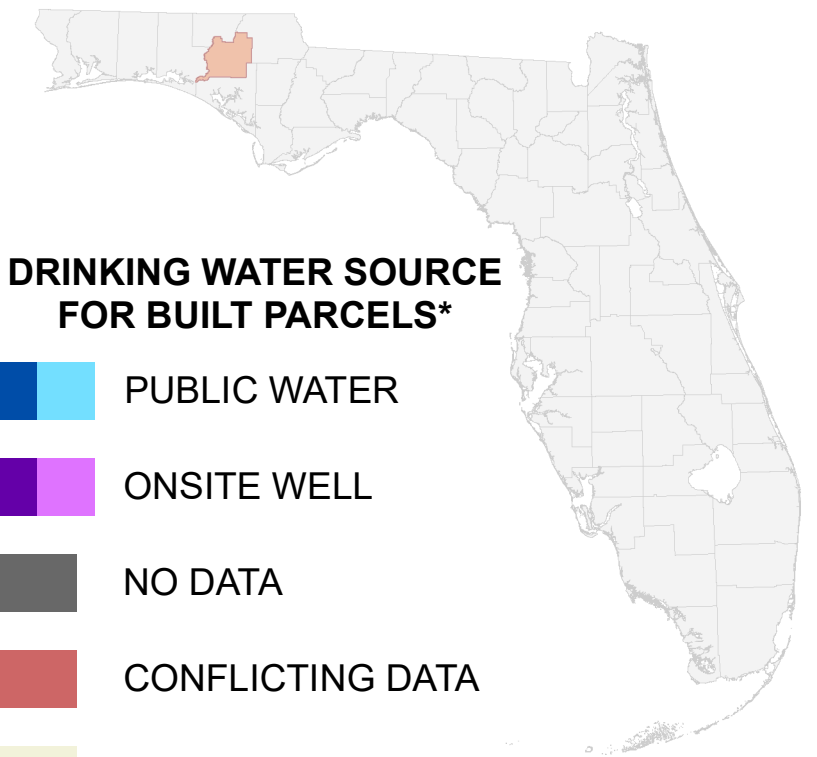


Florida Water Management Inventory

Washington County Drinking Water 2021



DRINKING WATER SOURCE FOR BUILT PARCELS*

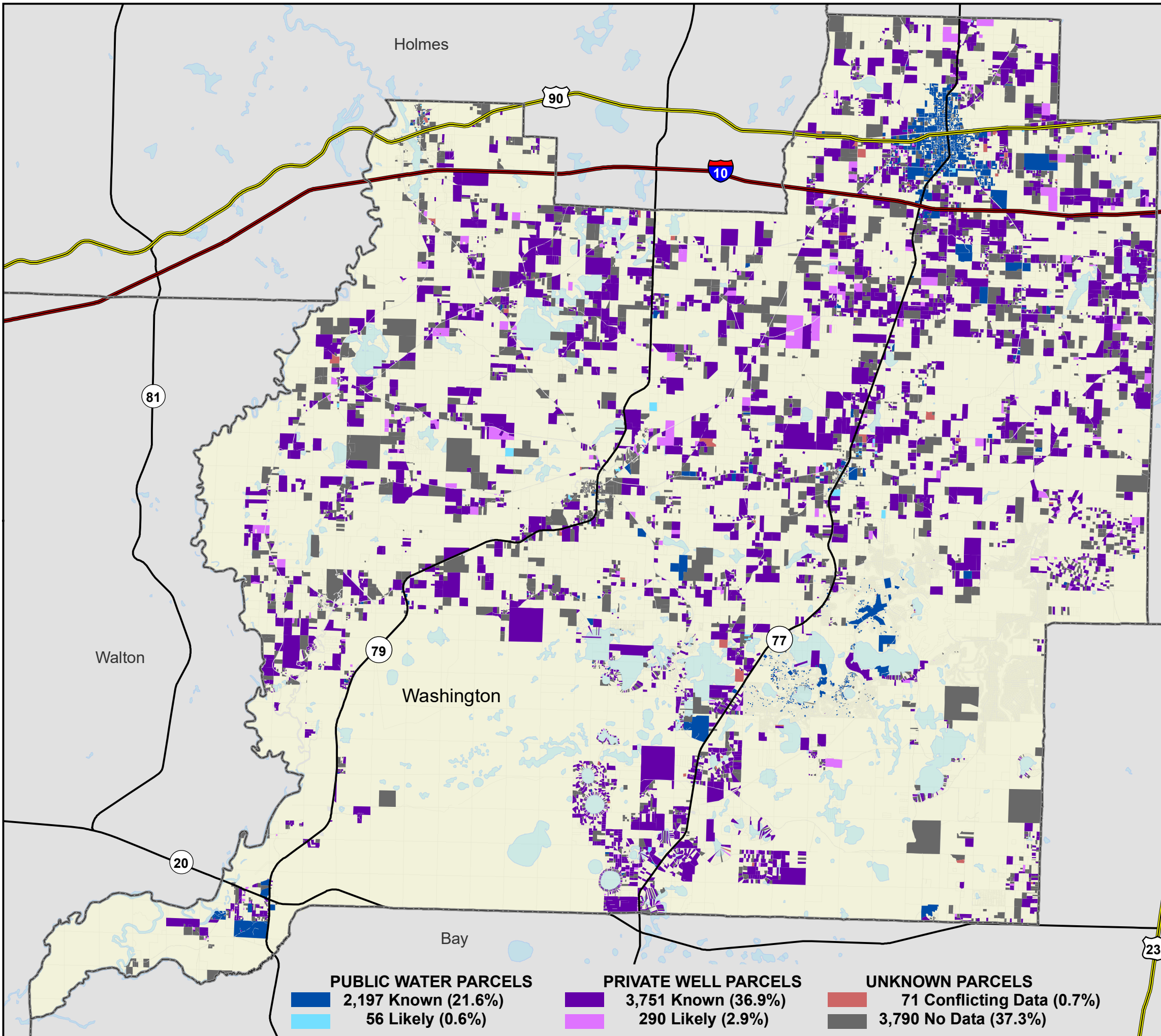
- PUBLIC WATER
- ONSITE WELL
- NO DATA
- CONFLICTING DATA
- NOT BUILT

Interstate
 US Highway
 State Road

* Includes parcels with unknown Built status. Percentages do not include parcels where drinking water is not applicable.



1:185,000
Albers Equal Area NAD83 HARN



PUBLIC WATER PARCELS		PRIVATE WELL PARCELS		UNKNOWN PARCELS	
	2,197 Known (21.6%)		3,751 Known (36.9%)		71 Conflicting Data (0.7%)
	56 Likely (0.6%)		290 Likely (2.9%)		3,790 No Data (37.3%)

This map is based on sources of varied accuracy and scale provided by multiple organizations. FDOH assumes no liability for the use of this map and associated data.



15Oct2021