

St. Johns River Fish Advisory

Kerr-McGee Hazardous Waste Site

Jacksonville, Florida

April 2018



The Florida Department of Health (Department) works to protect public health. Our top priority is to make sure residents nearby a contaminated site have the best information to safeguard their health.

Site description

The 31-acre Kerr-McGee hazardous waste site at 1611 Talleyrand Avenue is in a highly industrialized area along the west bank of the St. Johns River in Jacksonville, Duval County, Florida. The Site contained a fertilizer and pesticides formulation, packaging, and distribution facility.



Because of these findings, the Department will:

- Add an advisory to the Department's publication, "Your Guide to Eating Fish Caught in Florida," found on the website: http://www.floridahealth.gov/programs-and-services/prevention/healthy-weight/nutrition/seafood-consumption/_documents/advisory-brochure.pdf
- Collect and document health concerns of nearby residents
- Address public comments in a final report

What you need to know

- The Florida Department of Environmental Protection (DEP) requested that the Department review fish tissue sampling results from the St. Johns River to see if fish from the St. Johns River near the Kerr-McGee hazardous waste site are safe to eat.
- Pesticides, polychlorinated biphenyls (PCBs) and mercury were found in every fish sample analyzed.
- The Department recommends a "Do Not Eat Fish" advisory be issued within the area of the St. Johns River from just north of the Route 115 Bridge or Mathews Bridge (upstream of the Site) to south of E 21 St (Center Point Terminal Co.) [See Figure 1, see back side].

The Department is now seeking public review and comment of a toxicology consult. The consult is at <http://hazwaste.floridahealth.gov>. Public comments are due by May 10, 2018.

For more information about health or to submit comments on the consult contact:

Kevin McCranie, Florida Department of Health, 877-798-2772 (toll-free) or phtoxicology@flhealth.gov

You may obtain the report and submit comments by phone at 877-798-2772, on our website at <http://hazwaste.floridahealth.gov>, or via email request to phtoxicology@flhealth.gov.

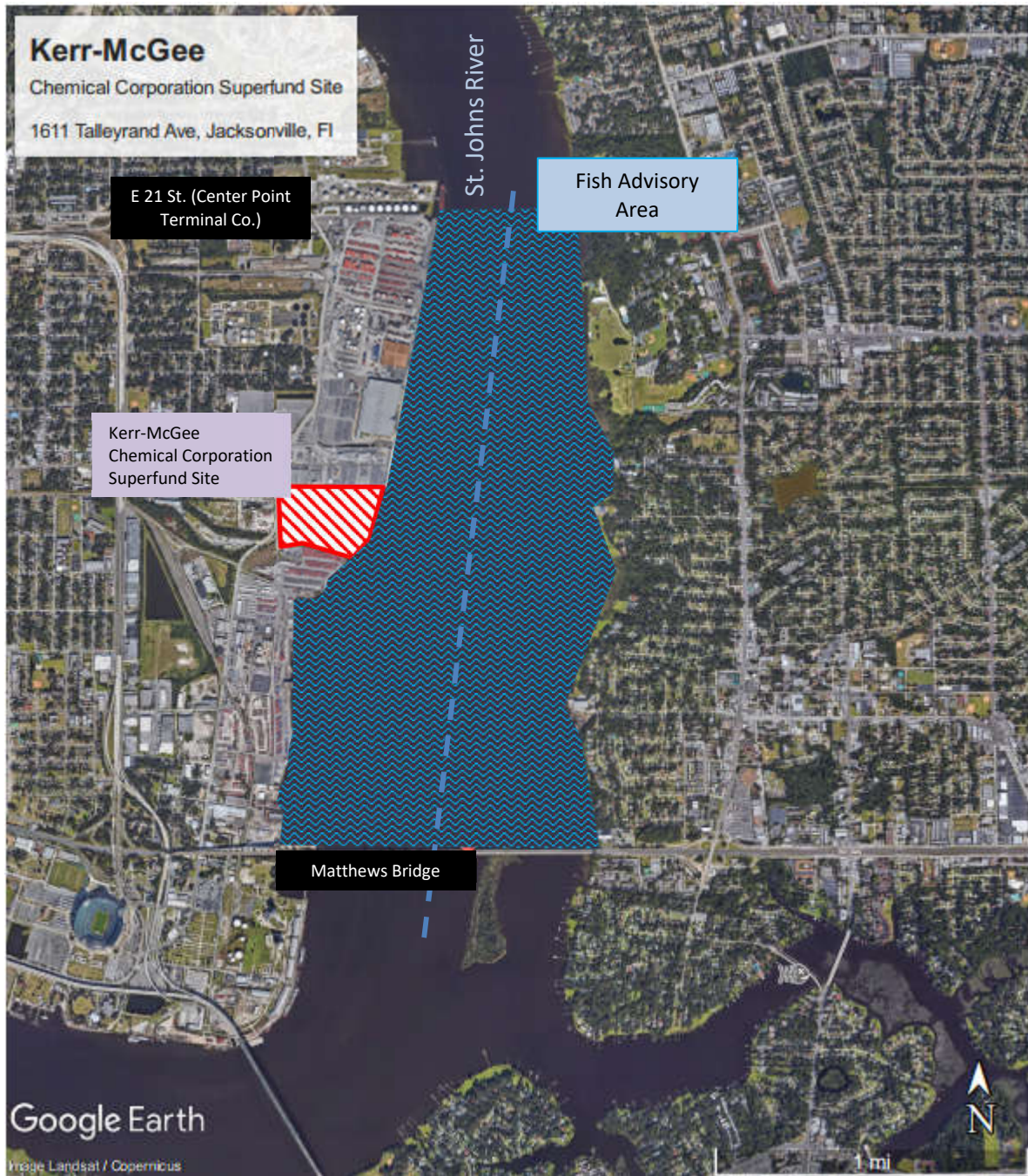


Figure 1: Fish advisory area along St. Johns River, north of Matthews Bridge to south of E 21 St (Center Point Terminal Co.).



The Florida Department of Health requests comments from residents near the Kerr-McGee hazardous waste site.

Comments are due by May 10, 2018.

Please circle one answer for each question below.

1. I learned about fish tissue sampling results for the Kerr-McGee site.

Yes Mostly Some No

2. I learned a toxicology consult is ready for public review and comment.

Yes Mostly Some No

3. I learned the Department's additional plans.

Yes Mostly Some No

4. I learned how to submit comments to the Department on its toxicology consult.

Yes Mostly Some No

Do you have any current health concerns related to the Kerr-McGee area you would like to provide?

What other comments do you have? (Please list)

The information requested below is optional, yet necessary for future contact.

Email: _____

Name: _____ Phone: _____

Address: _____ Jacksonville, FL Zip Code: _____

Please fill out this form, fold in thirds, add postage (if necessary), and mail to the preprinted address. You can also call toll-free (877-798-2772) or email your comments (phtoxicology@flhealth.gov).

-----Fold here-----

Name _____
Address _____
City _____ State __ Zip _____

PLEASE PLACE
FIRST CLASS
POSTAGE HERE

Kevin McCranie
Florida Department of Health
Public Health Toxicology, Bureau of Environmental Health
4052 Bald Cypress Way, Bin A08
Tallahassee, FL 32399-1720

-----Fold here-----