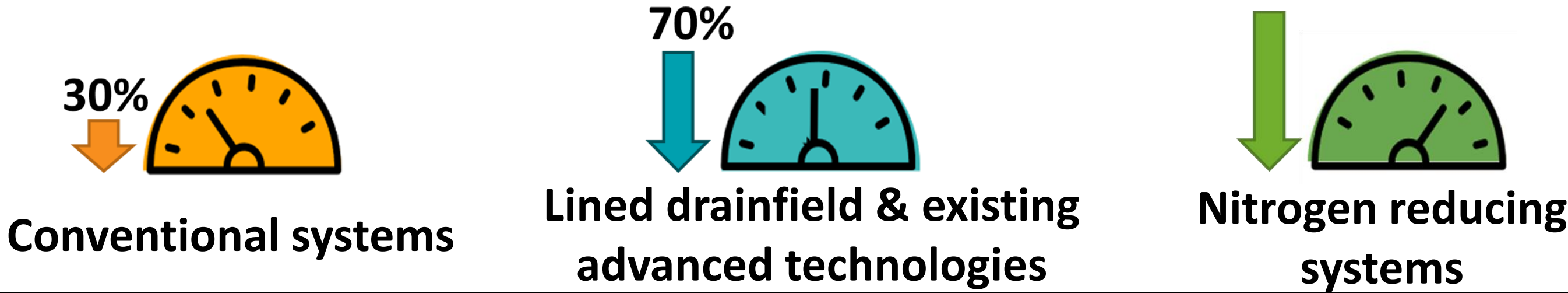
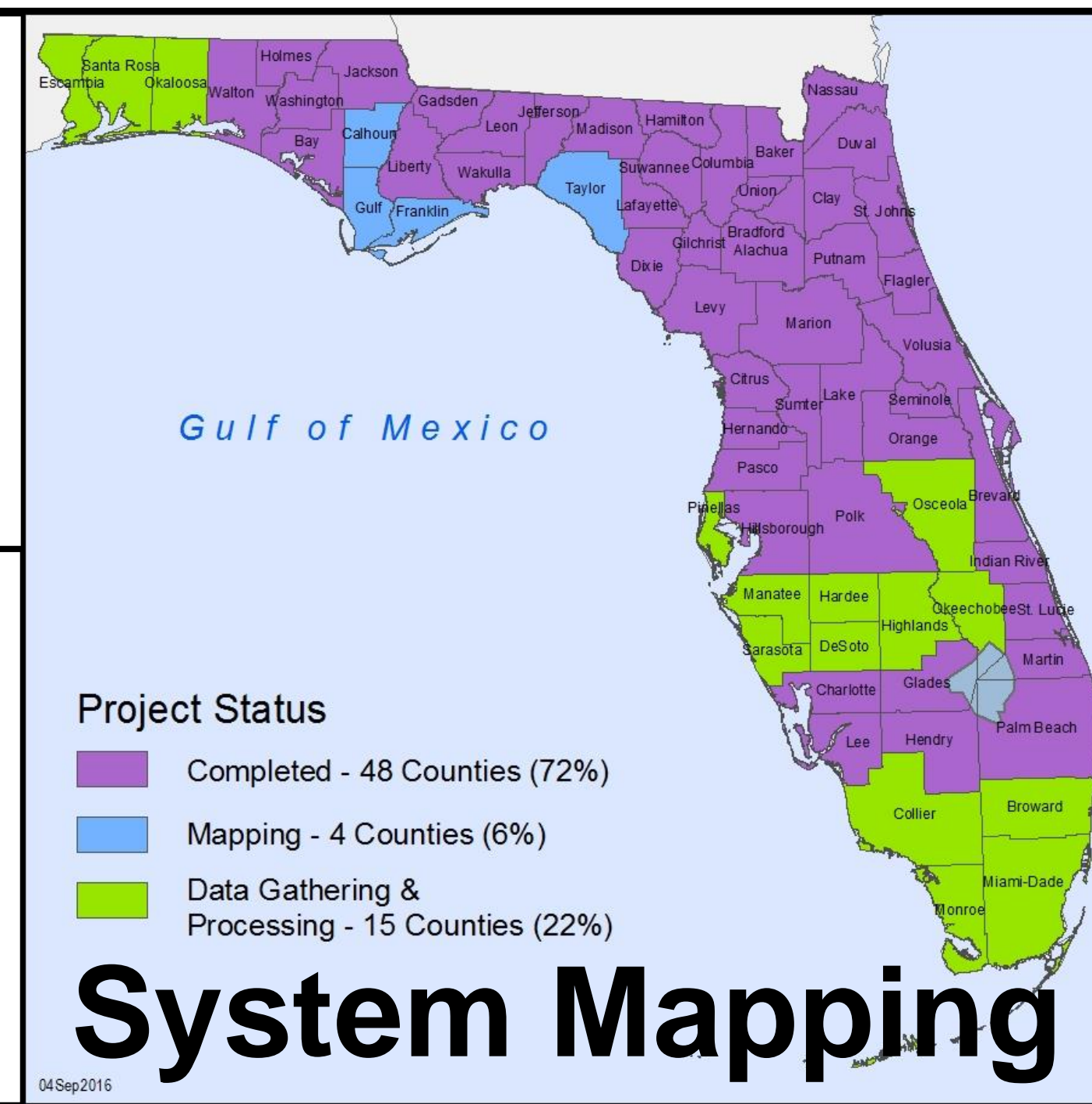
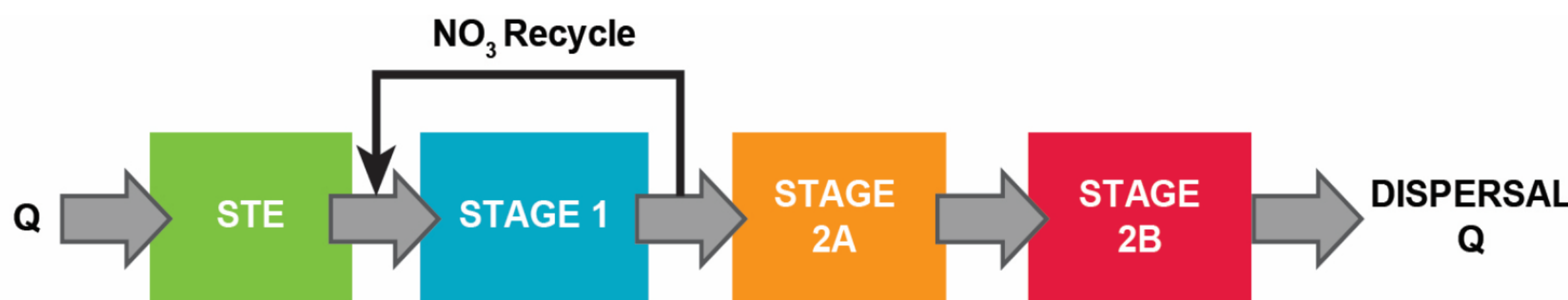




## Tool Creation



## Product Approval



## CoreTeam



Eberhard Roeder

### Program Engineer

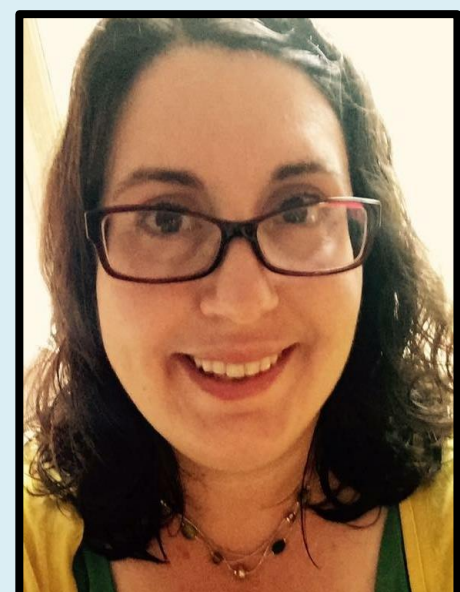
- Performs program engineering
- Technical expert



Xueqing Gao

### Program Consultant

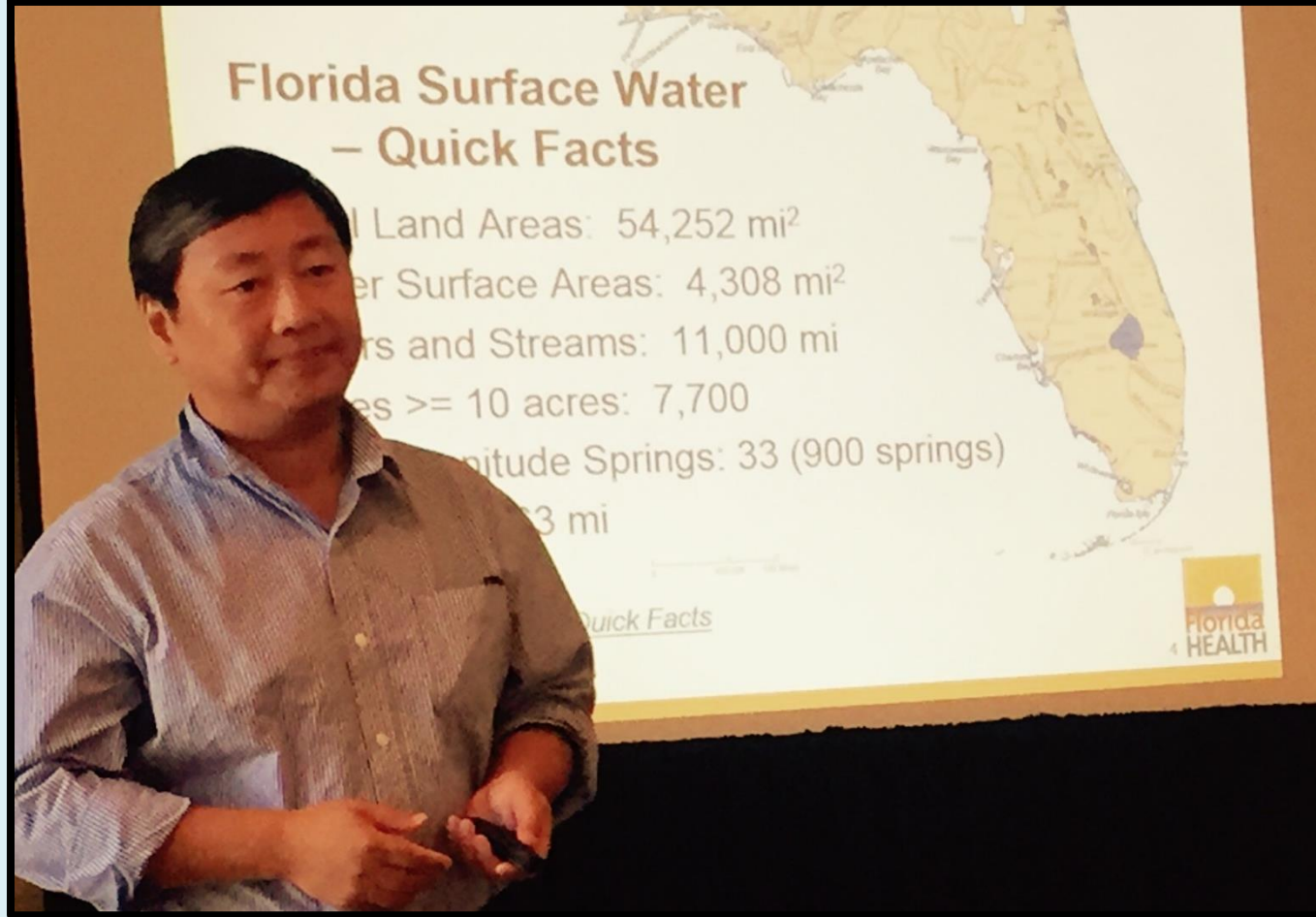
- Coordinates outreach
- Technical assistance



Elke Ursin

### Program Manager

- Coordinates program
- Manages research projects



The onsite sewage research and engineering program is the **only state-funded government-operated research program in the nation**, which has allowed us to conduct unbiased onsite sewage research and technology evaluations **for over 30 years**. We offer a wealth of **technical expertise** in onsite sewage research and engineering to assist with **finding solutions to difficult questions**.

**Vision** - *Be the single best resource for knowledge relating to onsite sewage research and engineering in the State of Florida*

We provide **unbiased research** on public health and environmental impacts of onsite sewage in Florida, statewide **product review and approval** of onsite sewage technologies, and **technical assistance** on statewide environmental health issues to the county health departments, state and federal agencies, interested citizens, and impacted industry. The results of our program help to shape the onsite sewage industry, which directly impacts anyone involved in understanding, building, or using onsite sewage systems in Florida.

### Unbiased research:

- Conduct Onsite System research to protect public health and the environment
- Support for the stakeholder-led Research Review and Advisory Committee

### Product review and approval:

- Uniform construction and design standards for septic tanks, advanced onsite wastewater treatment systems, and alternative drainfield products
- Make sure system additives do not contaminate surface or groundwater

### Technical assistance and outreach:

- Permitting review support to county offices and various other stakeholders
- Presentations and trainings on research project results at local, statewide, and national levels