

BENEFITS



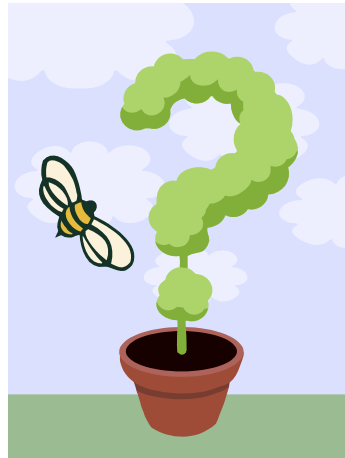
Why is PACE-EH Effective?

- Establishes active solutions to community identified issues
- New and improved leadership role in community regarding environmental health issues
- New professional partnerships
- Confidence to take on large initiatives results in empowerment
- New relationship between local health agencies and communities

PACE EH methodology developed by:

**National Association of County and City Health Officials (NACCHO)
Centers for Diseases Control (CDC) and Prevention**

QUESTIONS ???



Julianne Price
Statewide PACE Coordinator
772-794-7445
Julianne.Price@flhealth.gov

Bureau of *Environmental Health*
(850) 245-4187

Florida Department of Health Bureau of Environmental Health

4052 Bald Cypress Way
Tallahassee, FL 32399
Bin A-08

Phone: (850) 245-4250
Fax: (850) 410-1375

<http://www.floridahealth.gov/healthy-environments/pace-eh/index.html>

PROTOCOL for ASSESSING COMMUNITY EXCELLENCE in ENVIRONMENTAL HEALTH (PACE-EH)



MISSION:

To protect, promote & improve the health of all people in Florida through integrated state, county & community efforts.



PACE-EH

Historically, public health has focused on sanitation, food safety, and water quality. New threats to public health have emerged – air toxics, noise pollution, solid and hazardous wastes. Today, public involvement and community participation are key in identifying, prioritizing, and addressing public health concerns, especially environmental and community health.

PACE-EH is a tool that is designed to encourage local health officials and community members to work together. Collectively, they will identify important environmental health concerns affecting the community.

PACE-EH is a systematic means to involve all the various stakeholders to work together to address the environmental health issues. Collaborative problem-solving is an essential element of the success of the PACE-EH.

Today, we face many challenges, such as, persistent health disparities and emergence of new health threats, changing demographics, and fears of terrorism in the community. Thus, PACE-EH seeks to strengthen public health leadership, promote community collaboration, and encourage environmental justice.



OBJECTIVES OF PACE-EH:

- Evaluate environmental health conditions
- Target populations at risk
- Set priorities
- Support health equity and social justice

LONG-TERM GOALS OF PACE-EH:

- Promoting improved communication between environmental health professionals and their communities
- Addressing outstanding environmental hazard issues and public health concerns
- Empowering communities to express and define their environmental health issues
- Inspiring long-term community-based environmental health interventions.



PACE-EH 13-STEP METHODOLOGY

The methodology consists of a series of tasks to engage the public's involvement, collect necessary and relevant information pertaining to community environmental health status, rank issues, and set local priorities for action. The tasks include:

- Determine Community to Undertake the Assessment
- Define and Characterize the Community
- Assemble Community Environmental Health Assessment Team
- Define the Goals of the Assessment
- Generate the Environmental Health Issue List
- Analyze Issues with a Systems Framework
- Develop Appropriate Community Environmental Health Indicators
- Select Standards
- Create Environmental Health Issue Profile
- Rank the Environmental Health Issues
- Set Priorities for Action
- Develop an Action Plan
- Evaluate Progress and Plan for the Future

For information on NACCHO PACE-EH project homepage, please visit the Web site:
www.naccho.org/topics/environmental/CEHA/PACEHDEMOsiteNACCHO.cfm