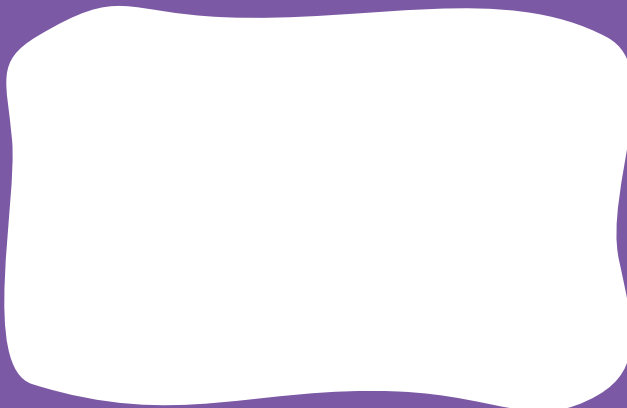


What is needed at your WIC certification appointment:

- **When required, bring each woman, infant, and child applying for WIC.**
- **Proof of ALL income for everyone in the household** (before taxes and deductions are taken out), such as: employment wages, child support, alimony, unemployment payments, foster care payments, and military earnings.
 - **Proof of income must include all sources of funds received during the last 30 days.** If paid weekly, provide four pay stubs. If paid every two weeks or biweekly, provide two pay stubs. If the amount does not change for each pay period, one pay stub is acceptable. **OR,**
 - **If you receive Medicaid, Temporary Cash Assistance (TCA), or food assistance (SNAP), you are income-eligible for WIC and proof of income may not be needed.**
- **ONE proof of where you live** (no P.O. boxes), must be current with name and address, such as a utility bill, bank/insurance statement, or driver's license. You must be currently living in Florida, but you don't have to be a U.S. citizen.
- **ONE proof of ID for you and ONE proof of ID for any infant or child applying for WIC**, such as a birth certificate, driver's license, crib card, military ID, photo ID, Social Security card, or hospital record.
- **Completed WIC Medical Referral Form for each woman, infant, or child who is applying, if available.**
- **Social Security Number for each person applying for WIC, if available.**
- **Immunization record for each child, if available.**

Local WIC Office



In accordance with federal civil rights law and U.S. Department of Agriculture (USDA) civil rights regulations and policies, this institution is prohibited from discriminating on the basis of race, color, national origin, sex (including gender identity and sexual orientation), disability, age, or reprisal or retaliation for prior civil rights activity. Program information may be made available in languages other than English. Persons with disabilities who require alternative means of communication to obtain program information (e.g., Braille, large print, audiotape, American Sign Language), should contact the responsible state or local agency that administers the program or USDA's TARGET Center at (202) 720-2600 (voice and TTY) or contact USDA through the Federal Relay Service at (800) 877-8339. To file a program discrimination complaint, a Complainant should complete a Form AD-3027, USDA Program Discrimination Complaint Form which can be obtained online at: <https://www.usda.gov/sites/default/files/documents/ad-3027.pdf>, from any USDA office, by calling (866) 632-9992, or by writing a letter addressed to USDA. The letter must contain the complainant's name, address, telephone number, and a written description of the alleged discriminatory action in sufficient detail to inform the Assistant Secretary for Civil Rights (ASCR) about the nature and date of an alleged civil rights violation. The completed AD-3027 form or letter must be submitted to USDA by:

(1) mail:

U.S. Department of Agriculture
Office of the Assistant Secretary for Civil Rights
1400 Independence Avenue, SW
Washington, D.C. 20250-9410; or

(2) fax: (833) 256-1665 or (202) 690-7442; or

(3) email: Program.Intake@usda.gov

This institution is an equal opportunity provider.
DH 150-310, 7/24



CONTACT

WIC

TODAY

Are you currently
pregnant, breastfeeding,
or have a child under age 5?

If so, you may be eligible for WIC.

FloridaWIC.org



800-342-3556

WIC A Nutrition Program

for women who are pregnant or who have recently been pregnant, breastfeeding women, infants, and children under age 5.

WIC provides the following at no cost:

- Healthy food.
- Nutrition education and counseling.
- Breastfeeding support.
- Referrals to health care, immunizations, and community services.

Eligibility for WIC

You must have a total household income equal to or less than the amount in the **WIC Income Guidelines** OR be currently enrolled in Medicaid, Temporary Cash Assistance (TCA), or Supplemental Nutrition Assistance Program (SNAP).



How to Apply for WIC

- Visit [FloridaHealth.gov/WICcontacts](https://www.floridahealth.gov/WICcontacts) or [SignUpWIC.com](https://www.SignUpWIC.com). You can also call **800-342-3556** and an operator will provide you with the phone number of your local WIC office to apply.
- Your local WIC office will give you a date and time for a WIC certification visit. At this visit, the household income and the medical/nutrition status of each applicant will be reviewed. During this appointment, you will find out if you and your children are eligible for WIC.

WIC Income Guidelines

For a pregnant woman, each unborn baby counts as one extra person in the household size.

Household Size	Monthly Income before taxes and deductions
1.....	\$2,322
2.....	\$3,152
3.....	\$3,981
4.....	\$4,810
5.....	\$5,640
6.....	\$6,469
7.....	\$7,299
8.....	\$8,128

Revised 6/21/2024

