

Interview times of confirmed salmonellosis cases in Florida from January 2018 – December 2018

Jamilla Cooper, MPH

Bureau of Epidemiology

Division of Disease Control & Health Protection

Florida Department of Health

Background

- Florida is one of the leading states for the number of reported cases of *Salmonella*
- Follows a seasonal pattern: number of cases peak in late summer and are lowest during the winter
- In 2018, there were:
 - 7,261 reported cases
 - 86.1% of cases were sporadic
 - 10.2% of cases were in a sensitive situation
 - 18.4% were hospitalized due to their illness

Background cont'd

- Enteric Interview Team
 - Created to investigate cases of salmonellosis
 - Questionnaire based on National Hypothesis Generating Questionnaire
 - Average interview time is ~30 mins

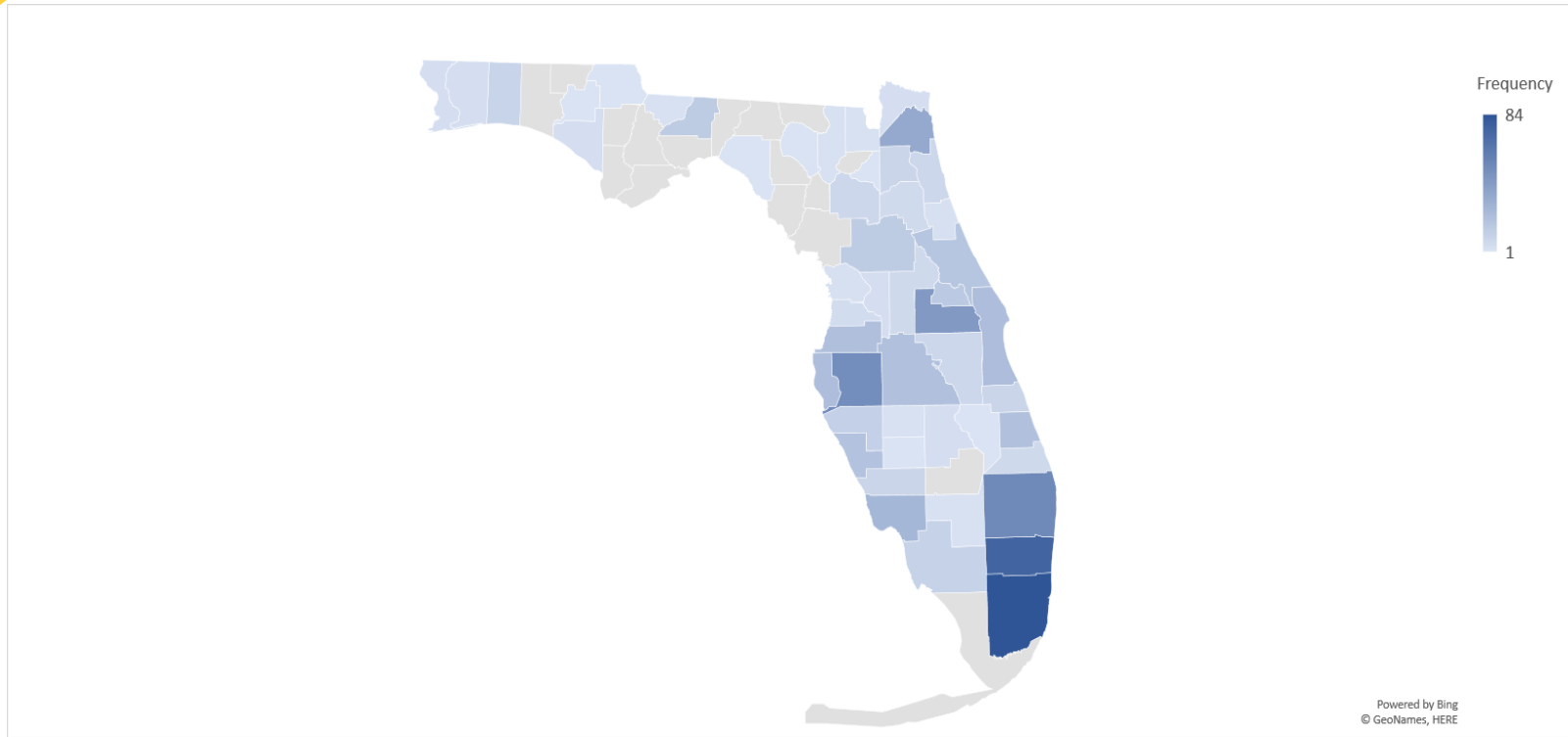
Research Goals

- To assess the call times of salmonellosis interviews
- To examine factors which can impact the length of the salmonella interviews

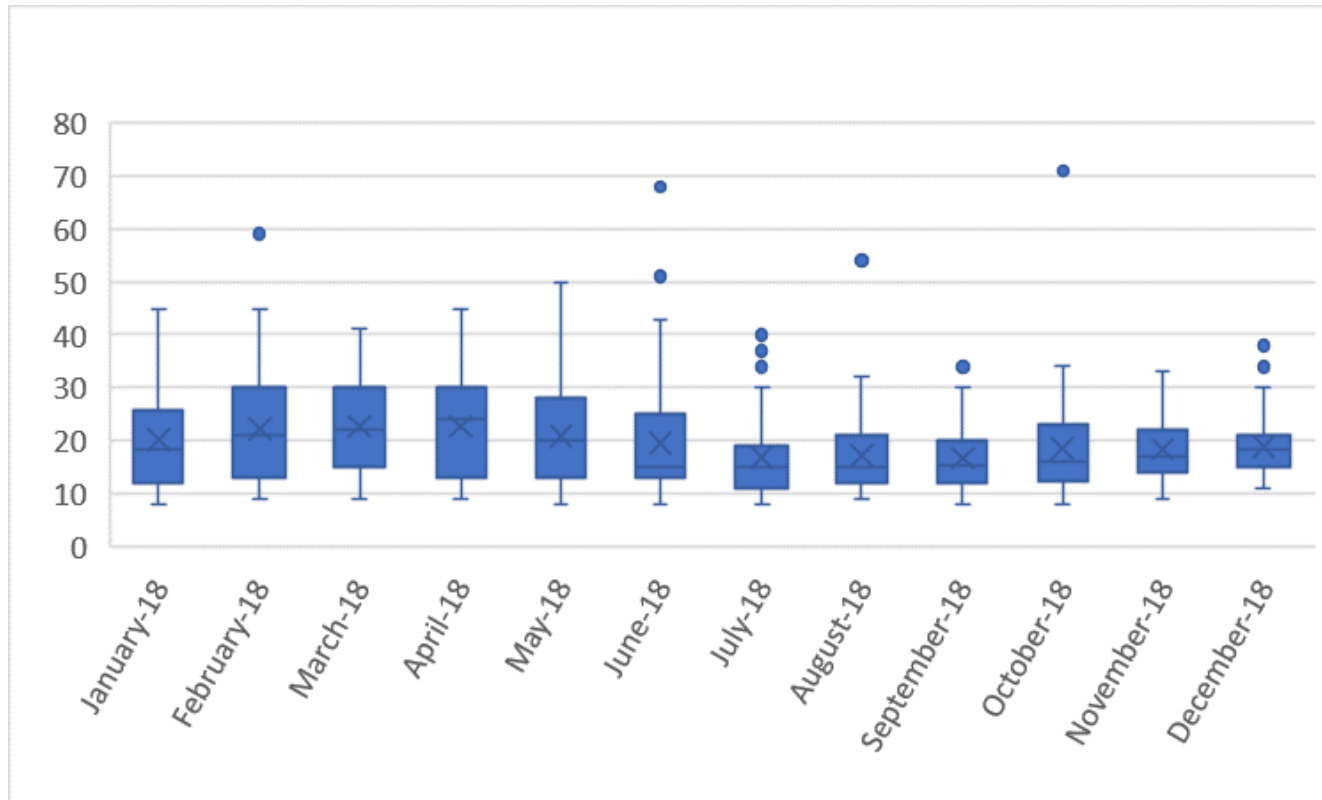
Methods

- Salmonellosis interview data is stored in the Web based reportable disease surveillance application called Merlin
- The analysis population includes 720 cases that were interviewed by the Enteric Illness Team from January 2018-December 2018
- Frequency calculations excluded variables that were missing values (n=22)

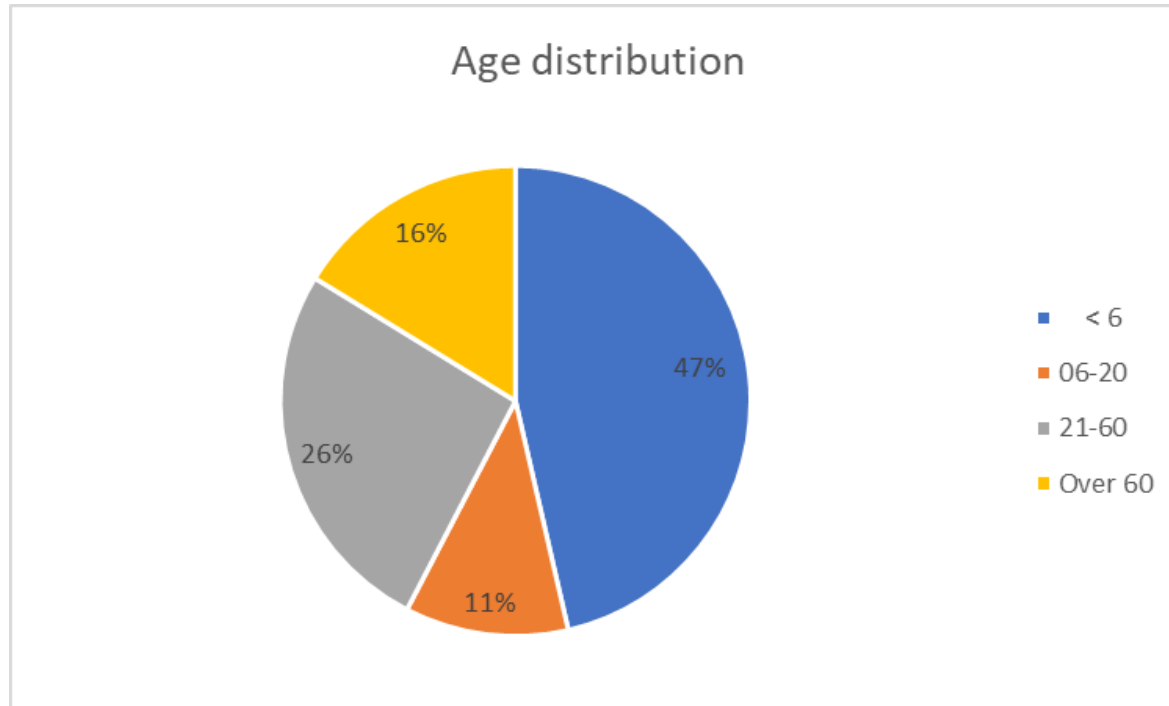
Frequency of interviewed *Salmonella* cases by County



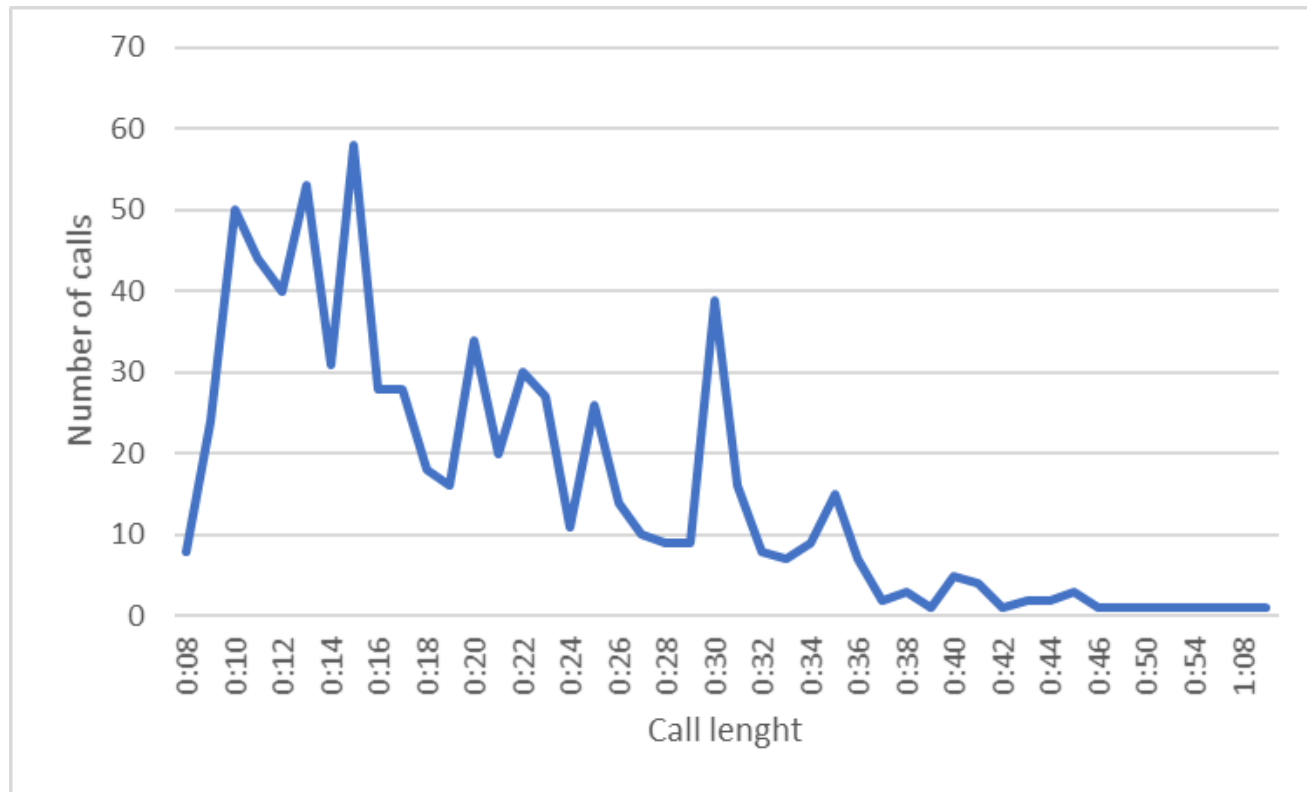
Call times by month



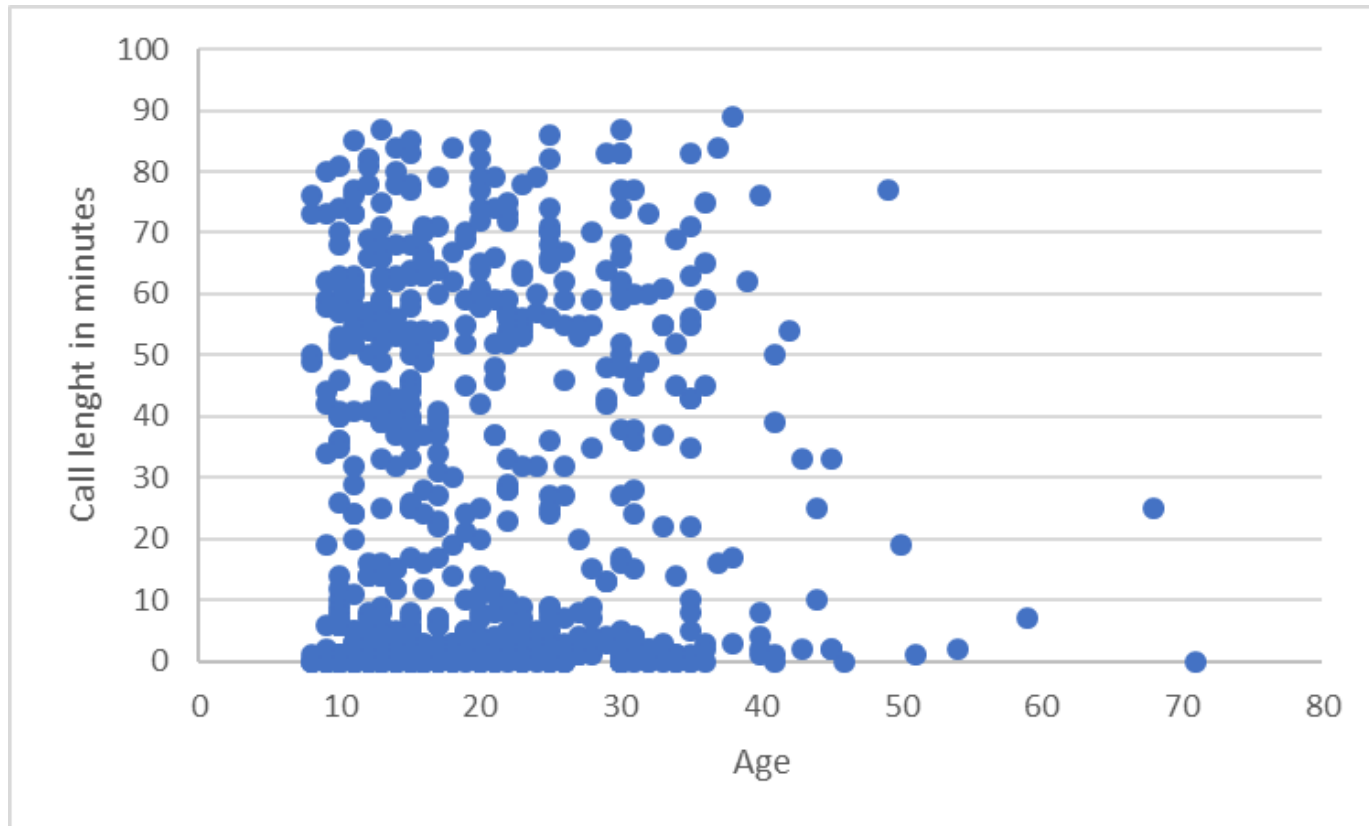
Age distribution of cases



Length of Call Times for interviewed cases



Comparing age to interview call times



Conclusion

- No association between the age of the respondent and length of an interview
- More variables need to be examined in relation to length of interview.

Questions



Jamilla Cooper, MPH
850-901-6890
Jamilla.cooper@flhealth.gov