

The Florida Cancer Plan

Christopher R. Cogle, M.D.

Chair, Florida Cancer Control and Research Advisory Council (CCRAB)

Professor of Medicine, University of Florida

christopher.cogle@medicine.ufl.edu

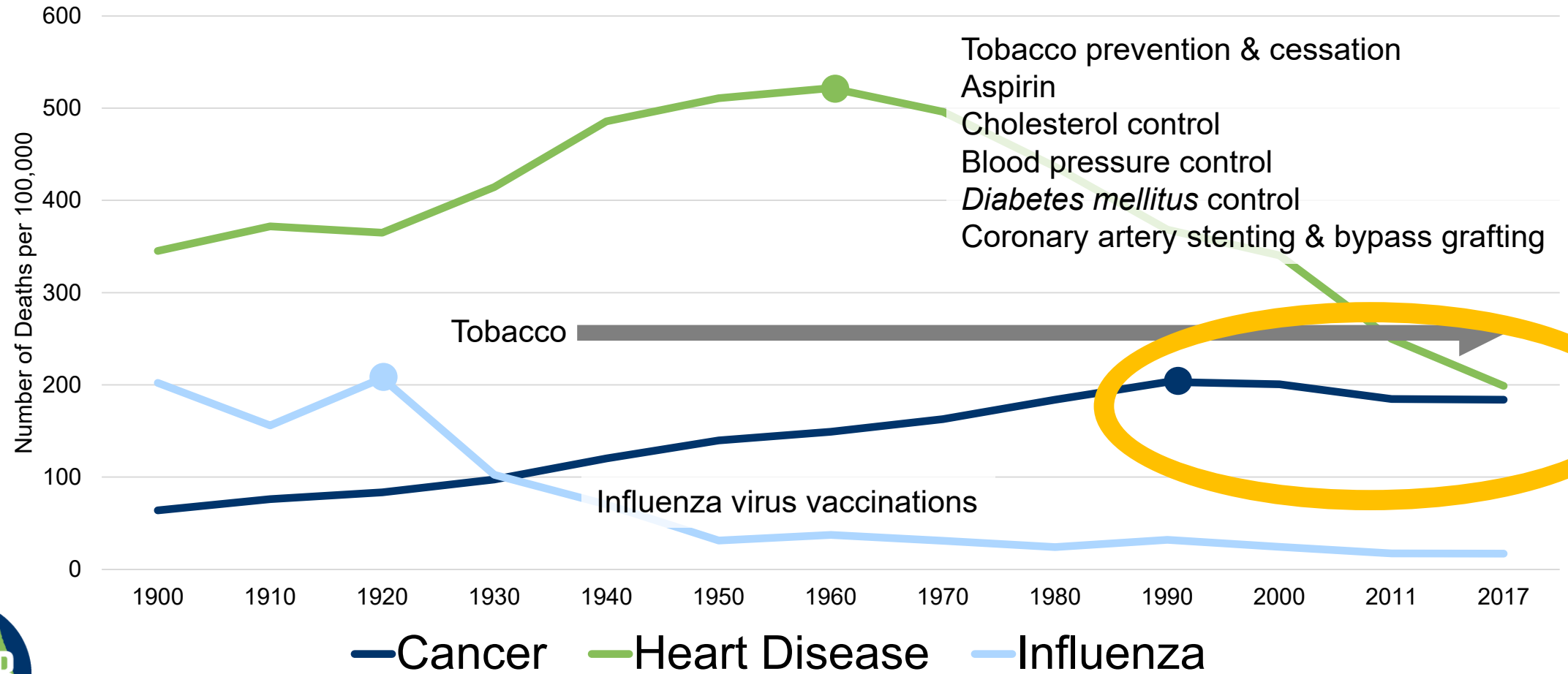
February 11, 2020

Disclosures

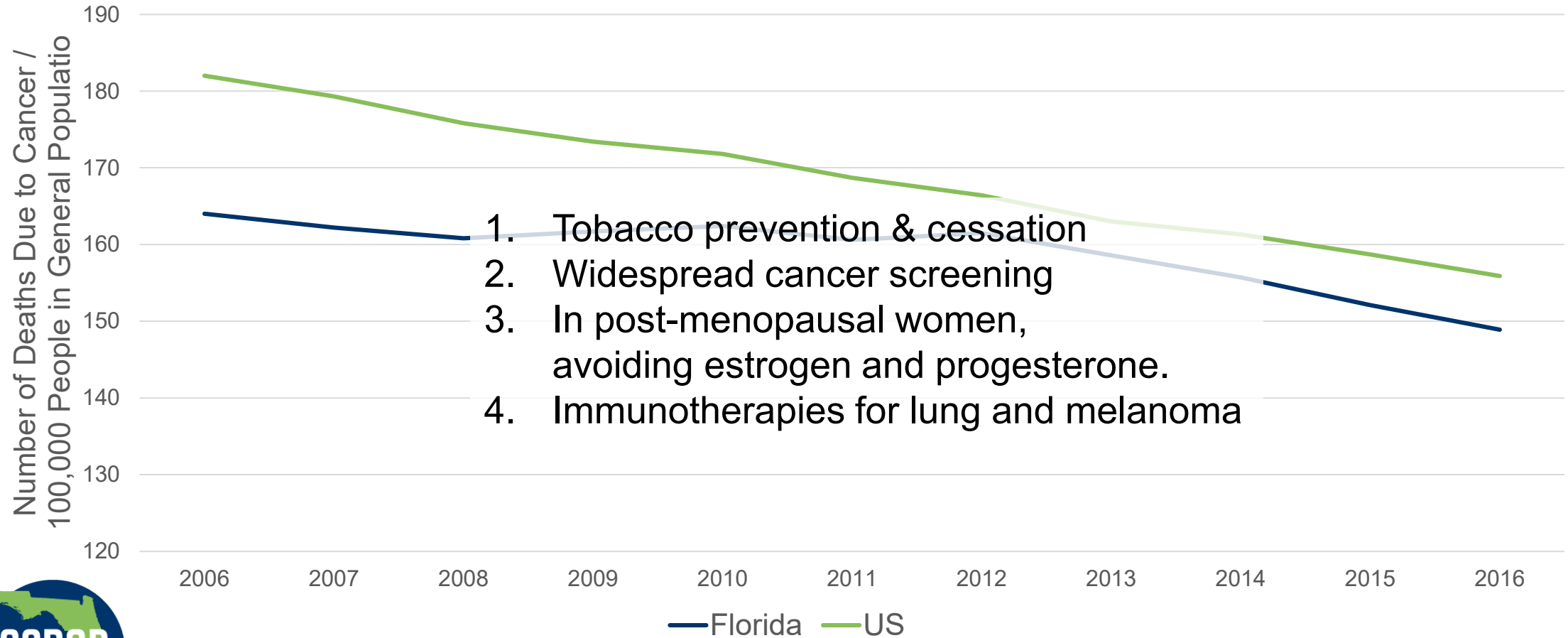
- Dr. Cogle is a faculty member at the University of Florida supported by research funding, clinical revenue, and teaching credits.
- Dr. Cogle is a part-time employee of the Department of Veterans Affairs.
- Dr. Cogle founded two start-up companies:
 - CancerPOP.com a precision oncology service for cancer patients
 - addon.life a precision supplement service for cancer patients
- CCRAB work is voluntary.



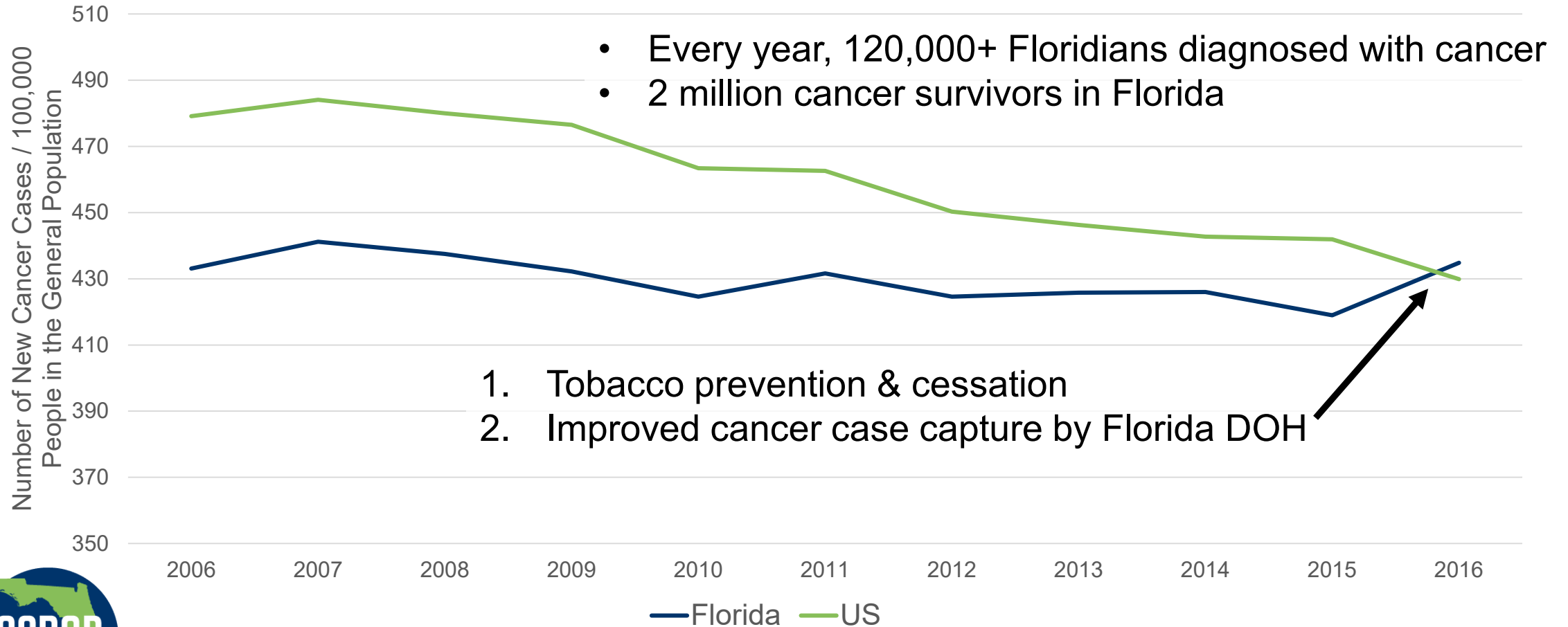
Leading Causes of Death in the US & Florida



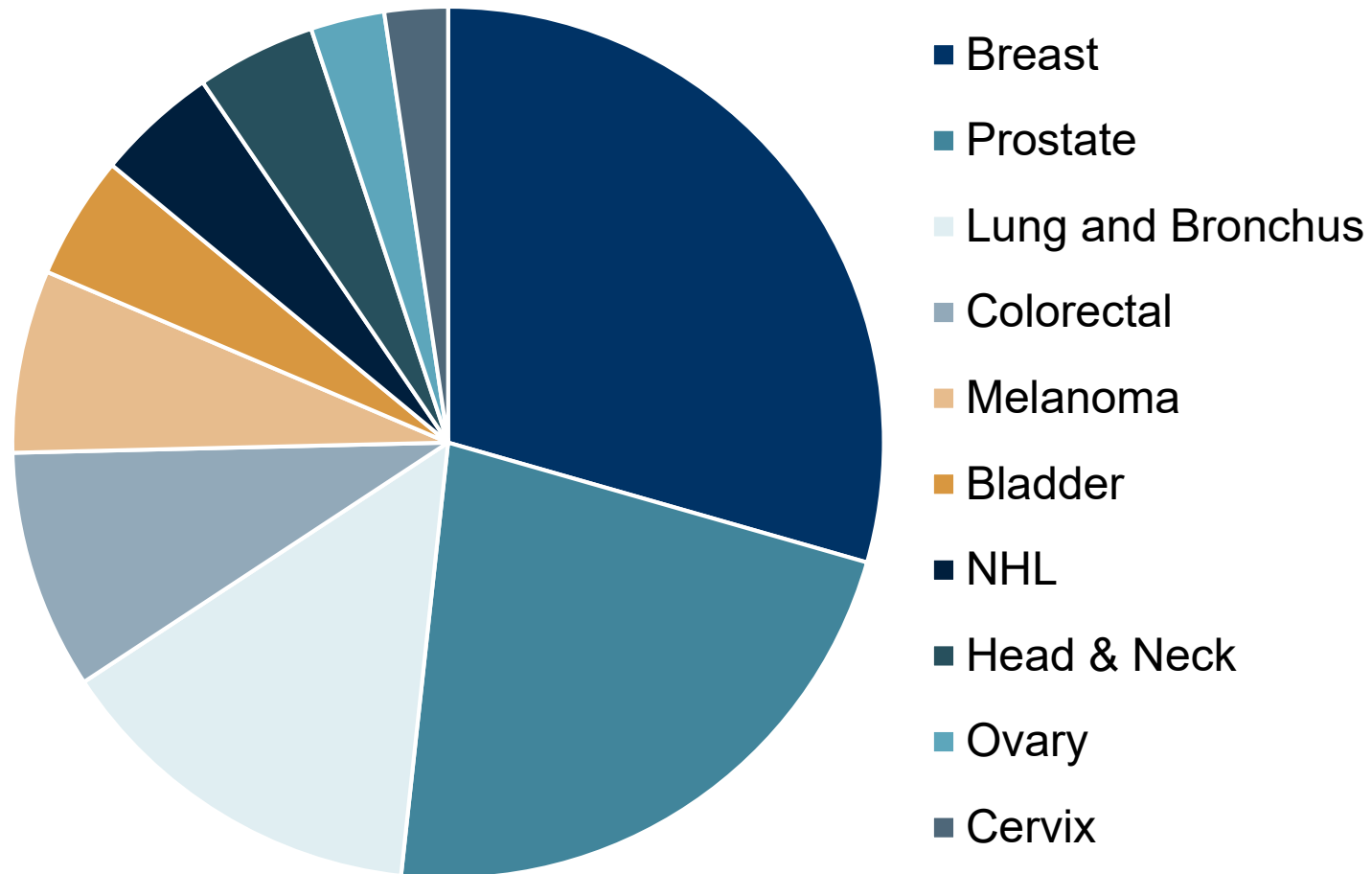
Cancer Mortality Rates in Florida versus the US



Cancer Incidence Rates in Florida versus the US

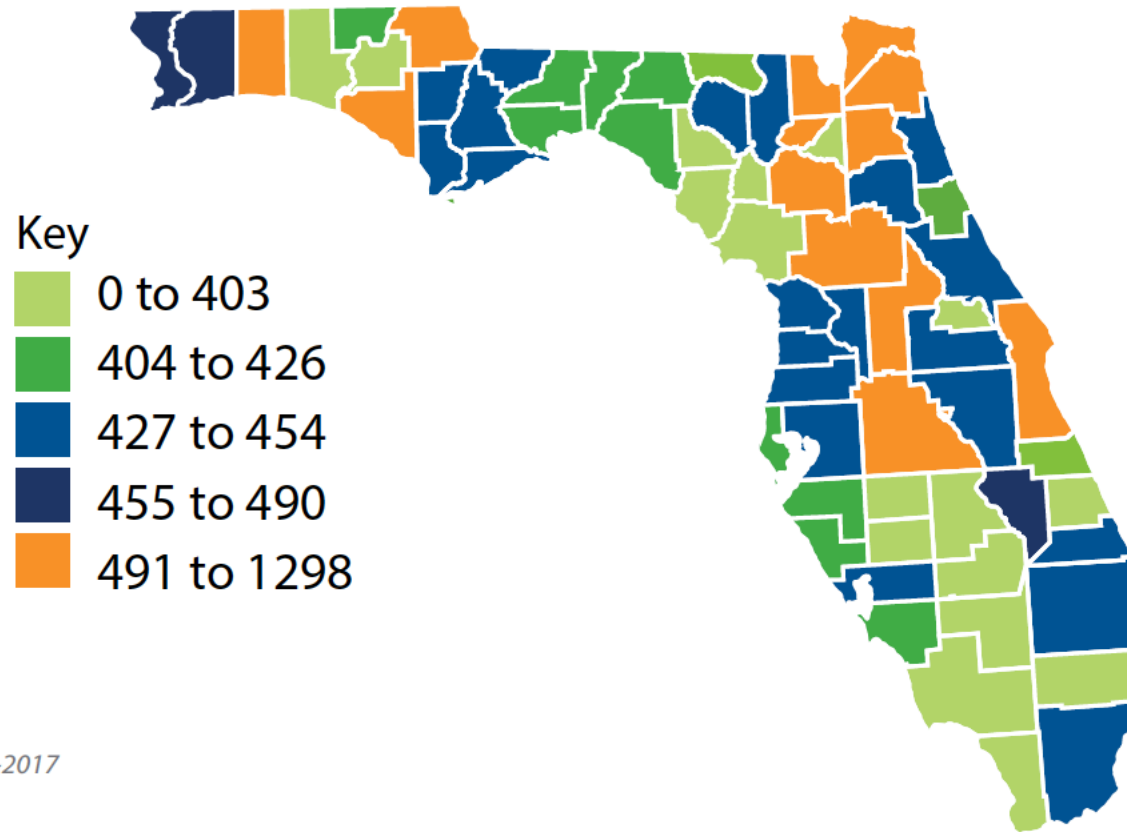


Top 10 Cancer Types in Florida



Cancer Incidence by Florida County

Age-adjusted cancer incidence rates per 100,000 Floridians

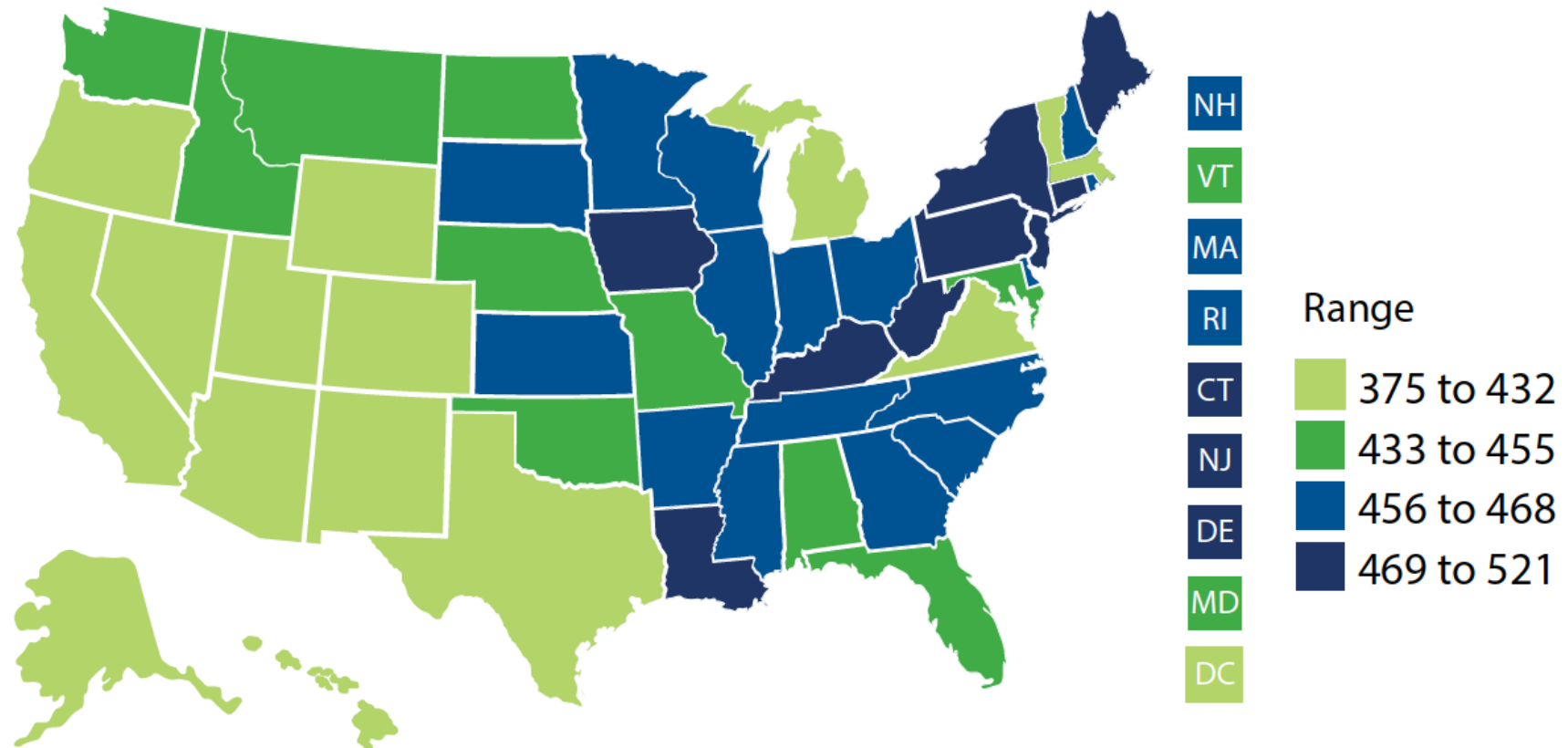


Source: FCDS, 2007-2017



Cancer Incidence by US State

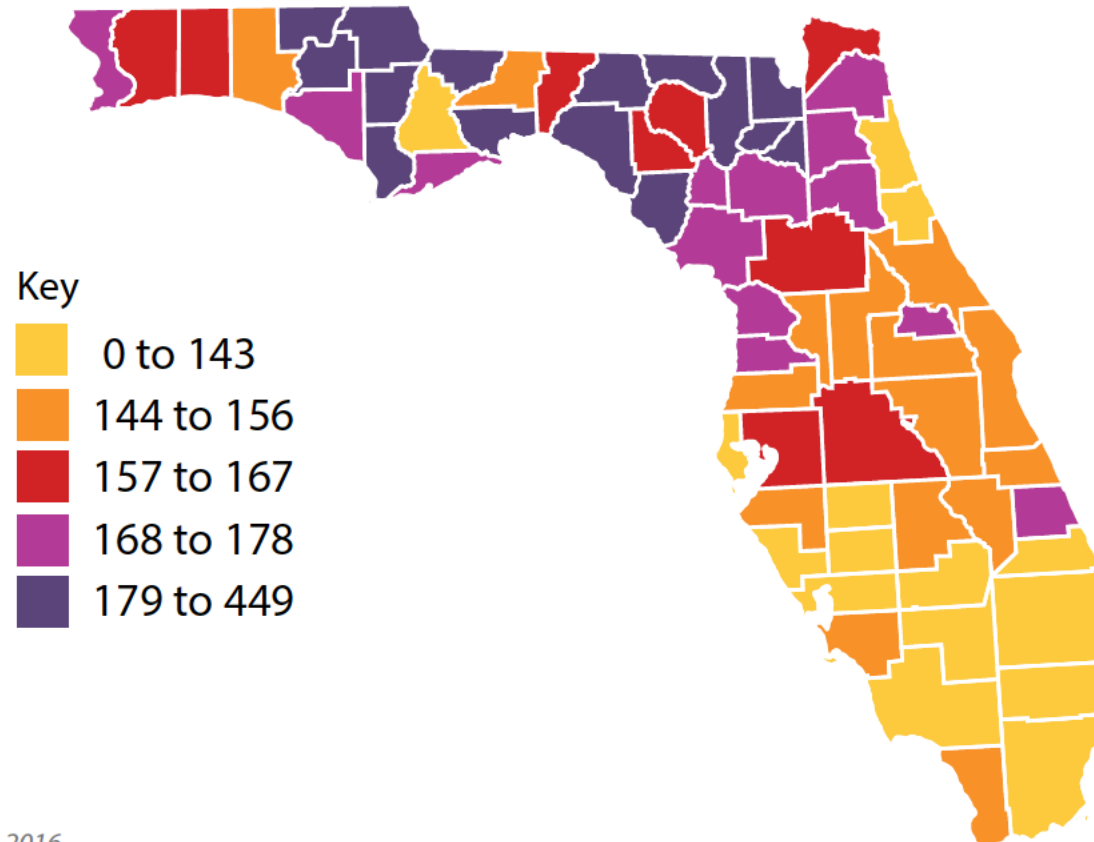
Age-adjusted cancer incidence rates per 100,000



Source: CDC, www.cdc.gov/cancer/dataviz

Cancer Mortality by Florida County

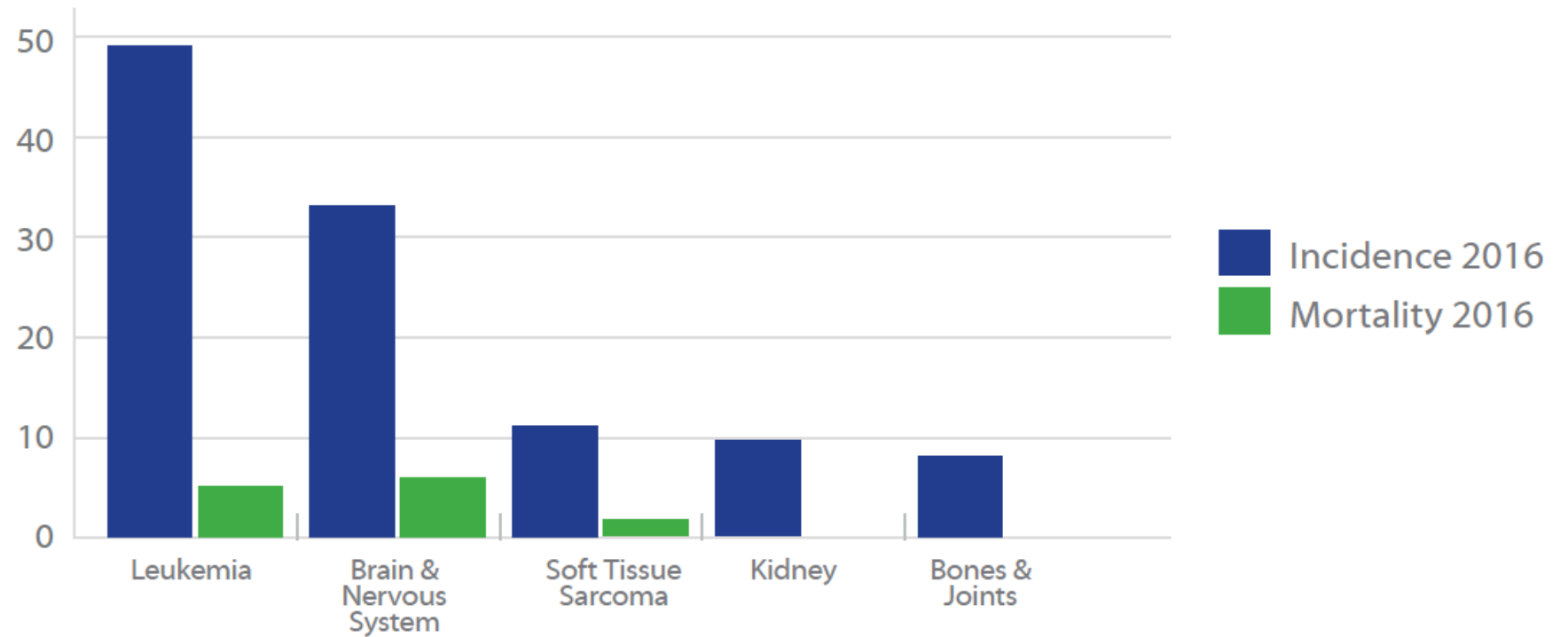
Age-adjusted cancer mortality rates per 100,000



Source: FCDS, 2006-2016

Childhood Cancers in Florida

Per 100,000 Floridians aged 0-14 years



Source: FCDS, 2012-2016

Florida Cancer Control and Research Advisory Council (CCRAB)

- Section 1004.435 in Florida Statute
- Advise Florida Secretary of Health, Board of Governors, and Legislature on ways to reduce Florida's cancer burden
- Florida Cancer Plan
- Annual Florida Cancer Report
- Cancer Center of Excellence Awards



Chair
Christopher Cogle, MD
University of Florida
Senate President's
Appointee



Vice Chair
Clement Gwede, Ph.D.,
MPH, RN, FAAN
Moffitt Cancer Center



Scott Rivkees, MD
Florida's Surgeon General



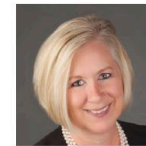
Senator Lizbeth Benacquisto
Senate President's
Appointee



Robert Cassell, MD, Ph.D.
Association of Community
Cancer Centers



Asher Chanan-Khan, MD
Florida Hospital
Association



Carole Duncanson
House Speaker's
Appointee



Patricia I. Geddie, Ph.D.,
APRN-CNS, AOCNS
Florida Nurses
Association



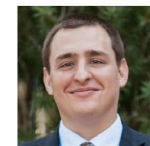
Representative Jamie Grant
House Speaker's
Appointee



Erin Kobetz, Ph.D., MPH
Sylvester Comprehensive
Cancer Center
University of Miami



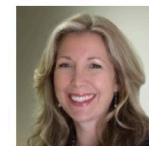
Duane Mitchell, MD, Ph.D.
University of Florida
Shands Cancer Center



Mitchell F. Peabody, DO
Florida Osteopathic
Medical Association



Amy Smith, MD
Governor's Appointee



Megan Wessel, MPH
American Cancer Society



VACANT
Florida Medical Association

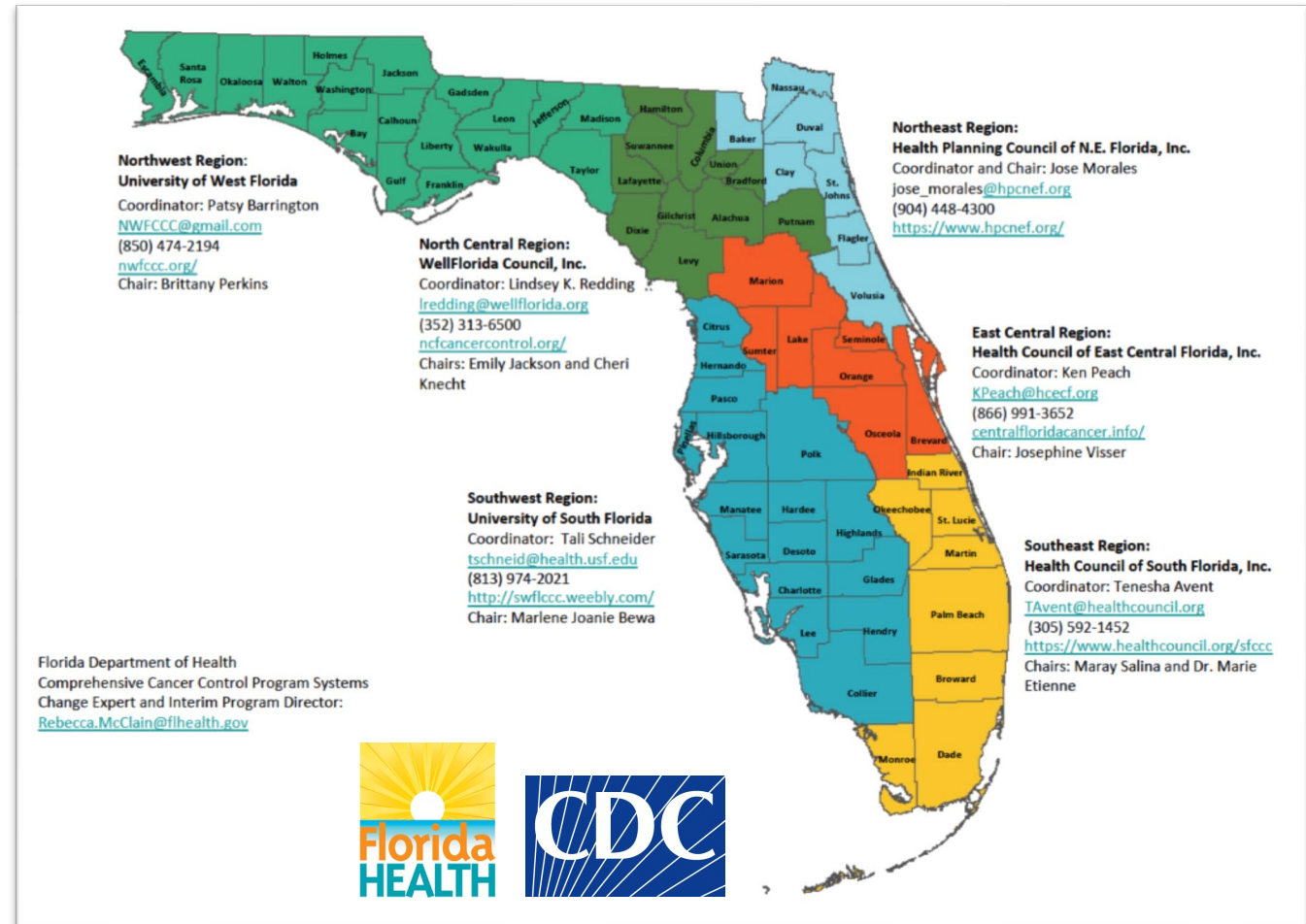
Florida Cancer Plan 2020-2025

Collaboration	Data	Prevention	Screening	Treatment	Quality of Life	Childhood Cancer	Research
List of stakeholders	Cancer biology data	Tobacco	Lung	Health insurance	Palliative care	Health insurance	Close merit gap in grants
2 campaigns	Social determinants of health	Cervical Cancer	Breast	Quality accreditation	Hospice care	Survivorship	NCI cancer centers
	Cancer screening data	Skin & UV	Colorectal	Nurses and navigators	Survivorship	Research	
	Pre-cancerous cervical pathology	Genomic counseling & testing	Prostate	Physician workforce			
		Alcohol	HCV				
		Diet & Weight					
		Radon					



Florida Cancer Plan 2020-2025

- Inclusive
- Partnerships
- Policy, systems, and environmental change
- Health equity
- Evaluation

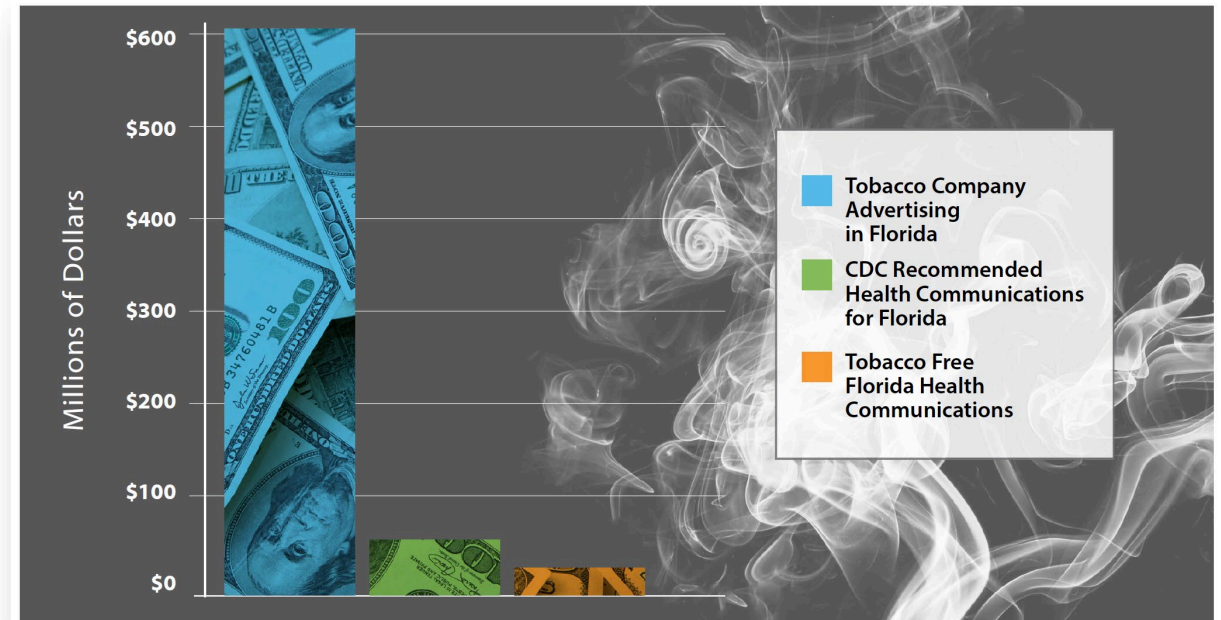
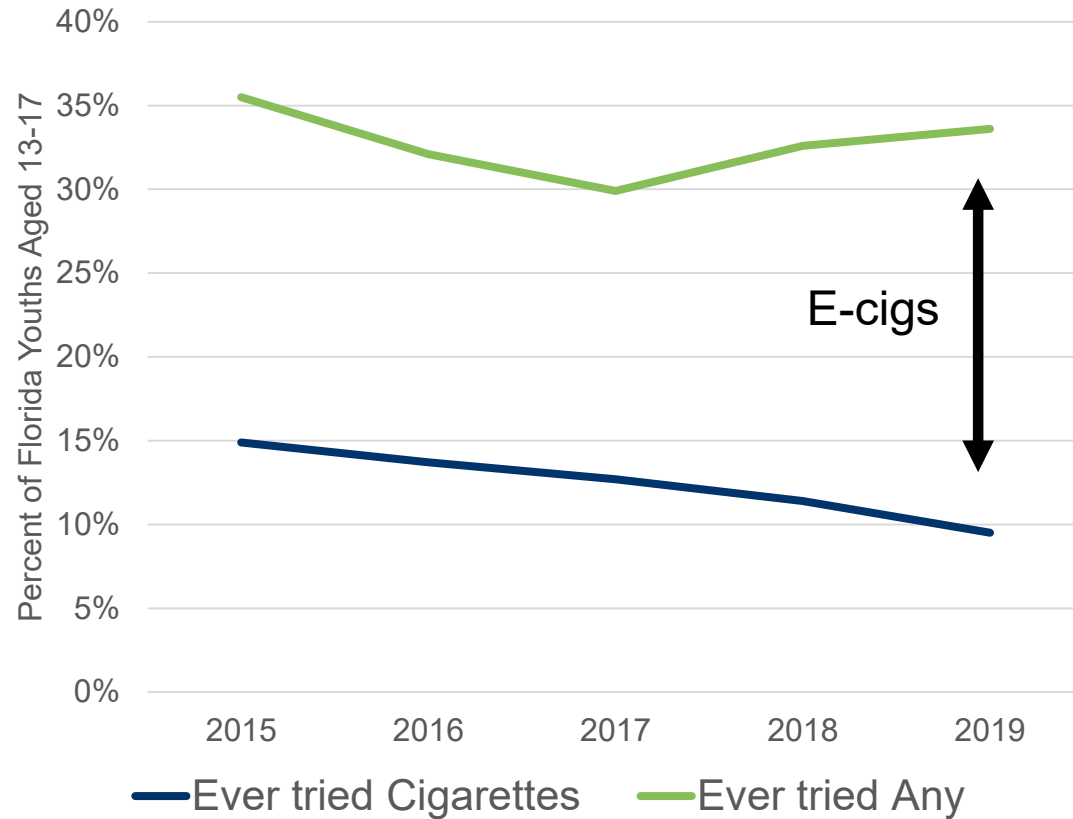


Florida Cancer Plan 2020-2025

Collaboration	Data	Prevention	Screening	Treatment	Quality of Life	Childhood Cancer	Research
List of stakeholders	Cancer biology data	Tobacco	Lung	Health insurance	Palliative care	Health insurance	Close merit gap in grants
2 campaigns	Social determinants of health	Cervical Cancer	Breast	Quality accreditation	Hospice care	Survivorship	NCI cancer centers
	Cancer screening data	Skin & UV	Colorectal	Nurses and navigators	Survivorship	Research	
	Pre-cancerous cervical pathology	Genomic counseling & testing	Prostate	Physician workforce			
		Alcohol	HCV				
		Diet & Weight					
		Radon					



Tobacco Free Florida

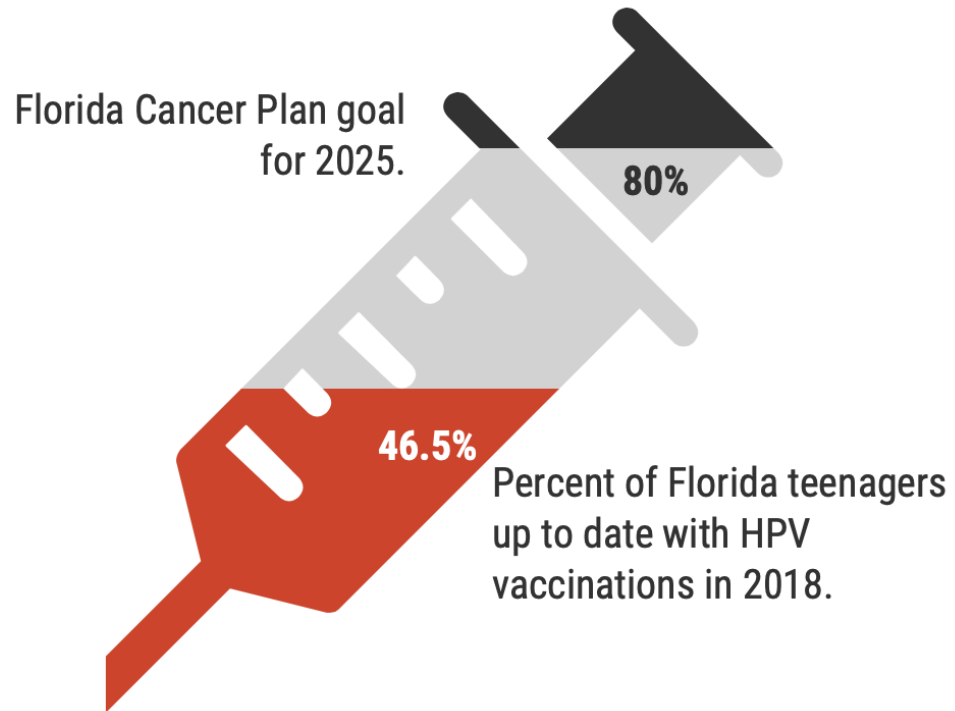


Tobacco Free Florida

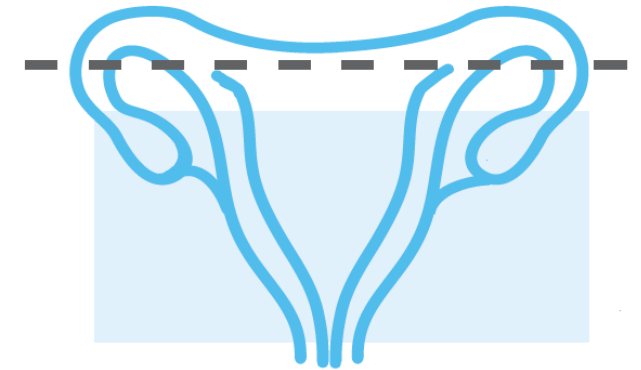
1. Tobacco Initiation
 - Tobacco prevention in school curricula
 - Prohibit smoking on all school campuses
2. Tobacco Cessation
 - Promote referrals in your clinic
 - Free CME/CEU on evidence based clinical strategies
3. Secondhand Smoke
 - Ask your patients, especially children
4. Funding



Cervical Cancer Free Florida



Cervical Cancer Screening
ACTUAL
79%



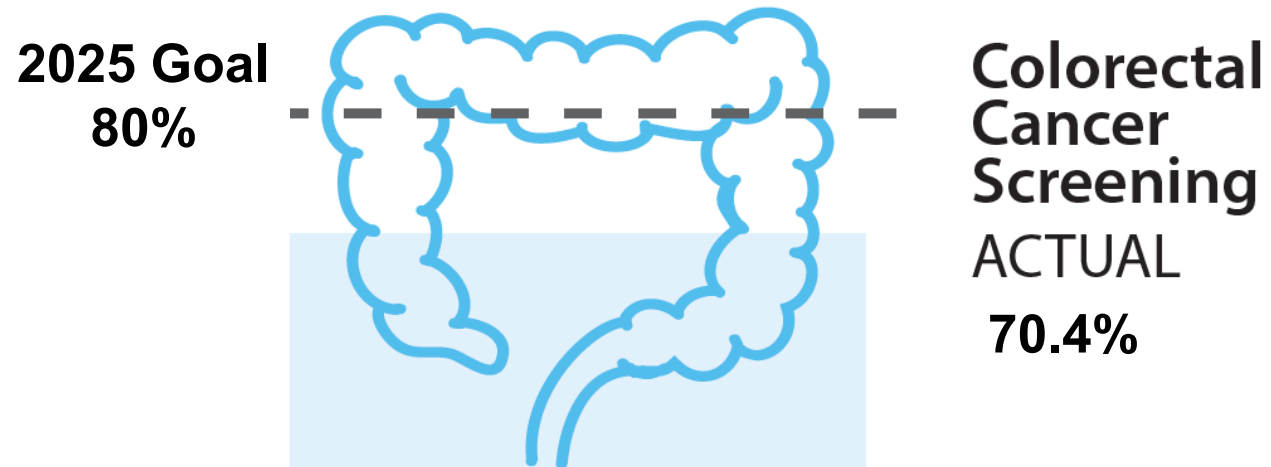
Cervical Cancer Free Florida

Goal 4: Eliminate cervical cancer as a public health problem in Florida by increasing vaccination against human papillomavirus (HPV) and increasing cervical cancer screening.

- ❑ HPV vaccinations.
- ❑ Pap smear and/or HPV test of cervix.
- ❑ Follow-up after abnormal Pap tests.



Colorectal Cancer Free Florida



- ❑ Community education:
 - ❖ FIT
 - ❖ FIT-DNA
 - ❖ Colonoscopy
- ❑ Remind systems for clinicians
- ❑ Reward systems for patients
- ❑ Follow-up for abnormal test results



2 Cancer Fighting Campaigns by 2025

- CCRAB
 - Regional Cancer Collaboratives
 - Florida Department of Health
 - All Florida Cancer Control Stakeholders
-
- Transportation?
 - Lung Cancer Screening?
 - Human papillomavirus (HPV)?
 - Colorectal Cancer Screening?



Florida Cancer Plan 2020-2025

Collaboration	Data	Prevention	Screening	Treatment	Quality of Life	Childhood Cancer	Research
List of stakeholders	Cancer biology data	Tobacco	Lung	Health insurance	Palliative care	Health insurance	Close merit gap in grants
2 campaigns	Social determinants of health	Cervical Cancer	Breast	Quality accreditation	Hospice care	Survivorship	NCI cancer centers
	Cancer screening data	Skin & UV	Colorectal	Nurses and navigators	Survivorship	Research	
	Pre-cancerous cervical pathology	Genomic counseling & testing	Prostate	Physician workforce			
		Alcohol	HCV				
		Diet & Weight					
		Radon					



The Florida Cancer Plan

Christopher R. Cogle, M.D.

Chair, Florida Cancer Control and Research Advisory Council (CCRAB)

Professor of Medicine, University of Florida

christopher.cogle@medicine.ufl.edu

February 11, 2020