



# **Emergency Medical Services Controlled Substance Overdose Report**

---

**4<sup>th</sup> Quarter- 2017  
October – December**

**Rick Scott  
Governor**

**Celeste Philip, MD, MPH  
Surgeon General and Secretary of Health**

---

## Report Overview

In response to the nation opioid epidemic, the Florida legislature passed and Governor Scott signed passed House Bill 249 requiring the Florida Department of Health (Department) to create a quarterly report that summarizes raw overdose data received by the Department from licensed emergency medical services (EMS). The report is to be provided to the Statewide Drug Policy Advisory Council, the Department of Children and Families, and the Florida Fusion Center. In addition to this quarterly report the data is made immediately available to county level first responder and public health agencies.

This report is based entirely on information received through the Florida Emergency Medical Services Tracking and Reporting System (EMSTARS) and represents a summary of EMS overdose responses reported into EMSTARS. EMSTARS is a voluntary program and records received by the Department represent 90 percent of the EMS responses throughout Florida.

Although the system is capable of capturing detailed information on the suspected cause of an overdose (i.e. Heroin, Fentanyl), in most cases this information is not included in the EMS record and therefore not included in the EMSTARS reporting. This is primarily due to the limited ability for EMS to make or to record a specific determination as to the cause of a suspected overdose during an emergency medical response. Differences between data standards, software vendors, and agency configuration may also affect the level of detail provided in EMSTARS records.

The EMSTARS data are characterized as responses because a single patient encounter may involve more than one agency. For example, a patient can receive initial treatment from a non-transport agency and be transported to a hospital by a different agency. When examining the overdose burden on the state EMS system, reviewing the total number of responses helps inform stakeholders on the resources devoted to the opioid epidemic.

Records included in EMSTARS are for patient-incidents where the 911 response involved an evaluation, treatment, and/or transport of a patient for extreme physical illness, decreased level of consciousness, respiratory depression, coma, or death resulting from the consumption or use of any substance that requires medical attention, assistance or treatment, and clinical suspicion for drug overdose, such as respiratory depression, unconsciousness, or altered mental status, without other conditions to explain the clinical condition. EMS personnel issue impressions to describe a patient's condition in the EMS record. Impressions are encoded in ICD-10 CM diagnostic categories as listed in the Data Definitions section on the following page. Information on the patient outcome is limited to the information available in the EMS record. Actual diagnoses are issued by a licensed physician in a medical setting, including pronouncement of death. Official cause of death is determined by medical examiners.

Any questions about this report can be directed to:

Florida Department of Health  
Bureau of Emergency Medical Oversight:  
4052 Bald Cypress Way, Bin A22 • Tallahassee, Florida 32399-1722  
Phone: (850) 245-4440 • Fax: (850) 488-9408 • [EMS@flhealth.gov](mailto:EMS@flhealth.gov)

## Data Definitions

### **Suspected drug overdose:**

**Fatal:** Primary/Secondary Impression of “T36 - T50, F11 - F16, F18 - F19” and patient death reported

**Non-fatal:** Primary/Secondary Impression of “T36 - T50, F11 - F16, F18 - F19” and no indication of death

### **Suspected opioid overdose:**

**Fatal:** Primary/Secondary Impression of “T40.1 - T40.4, T40.60, T40.69, F11” and patient death reported

**Non-fatal:** Primary/Secondary Impression of “T40.1 - T40.4, T40.60, T40.69, F11” and no indication of death

### **Administration of opioid-antagonist:**

**Fatal:** Primary/Secondary Impression of “T36 - T50, F11 - F16, F18 - F19” and administration of naloxone and patient death reported

**Non-fatal:** Primary/Secondary Impression of “T36 - T50, F11 - F16, F18 - F19” and administration of naloxone and no indication of death

### **Inclusion Criteria**

1. Type of Service Requested = 911 Response
2. Incident/Patient Disposition indicates that the patient was evaluated, treated, and/or transported
3. Incident location must be within Florida

# Florida Overview

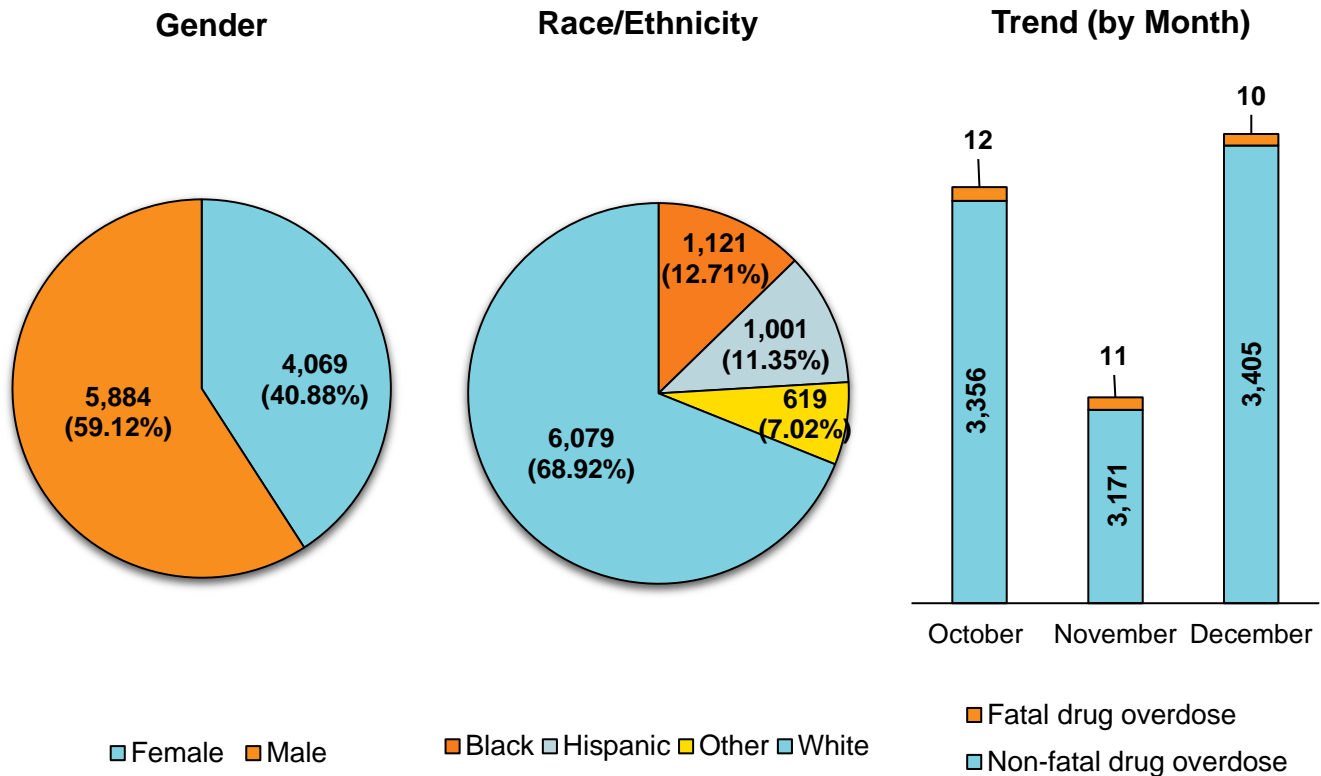
	Non-fatal	Rate	Fatal	Rate
Total number of suspected drug overdose EMS responses	9,932	4.83	33	0.02
Total number of suspected opioid overdose EMS responses	3,595	1.75	18	0.01
EMS responses including administration of an opioid-antagonist:	5,386	2.62	149	0.07

Note: Population rate per 10,000 people.

## Suspected drug overdose (including both fatal and non-fatal):

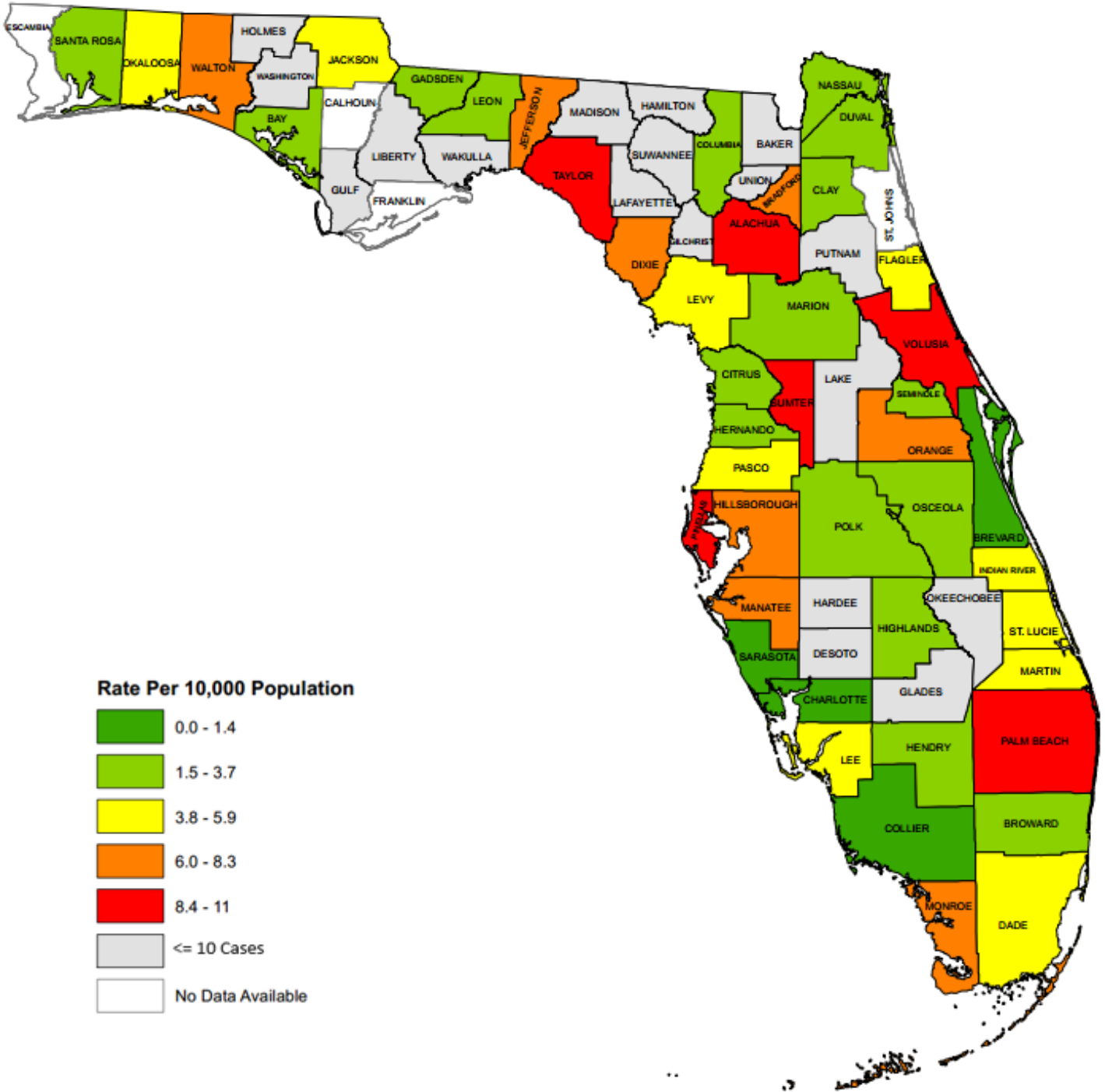
Age group	<1	1-4	5-9	10-14	15-24	25-34	35-44	45-54	55-64	65+
Frequency	13	87	19	108	1586	2897	1944	1361	1060	871
Rate	0.58	0.97	0.17	0.94	6.45	10.81	7.90	4.95	3.90	2.14

Note: Population rate per 10,000 people.

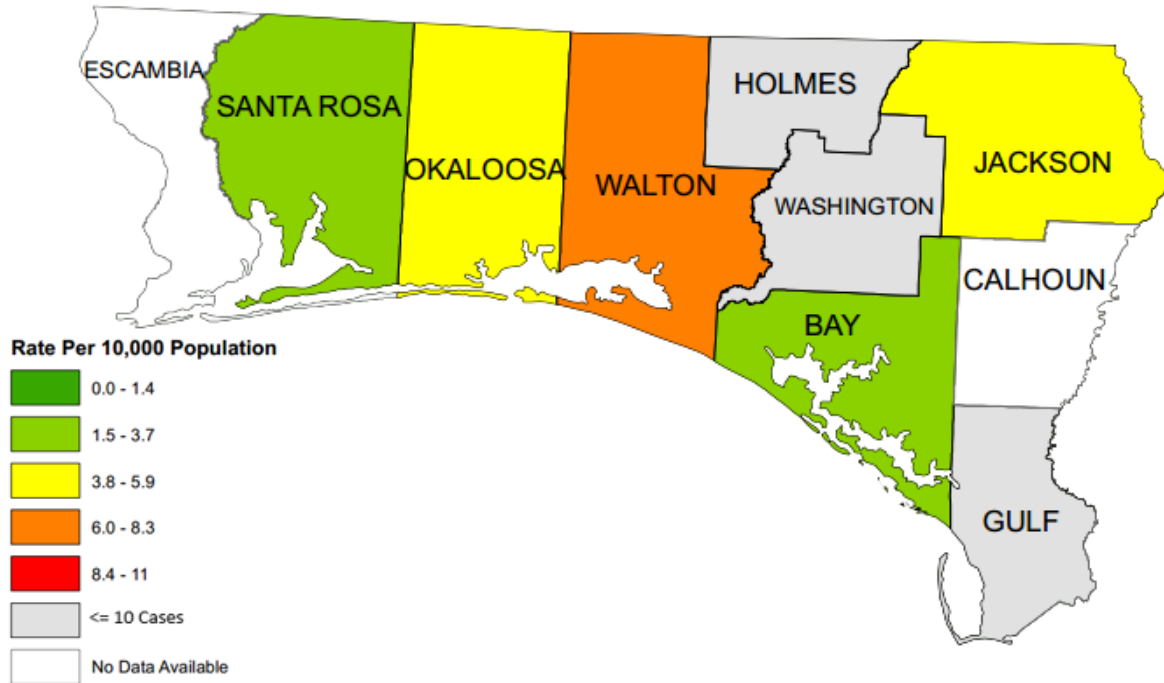


Note: Counts for Gender and Race/Ethnicity are for only the total number of records that include that information; for Gender, 99.88% of the total records are presented in the chart; for Race/Ethnicity, 88.51% of the total records are presented in the chart.

# Total Drug Overdose (Fatal and Non-Fatal)



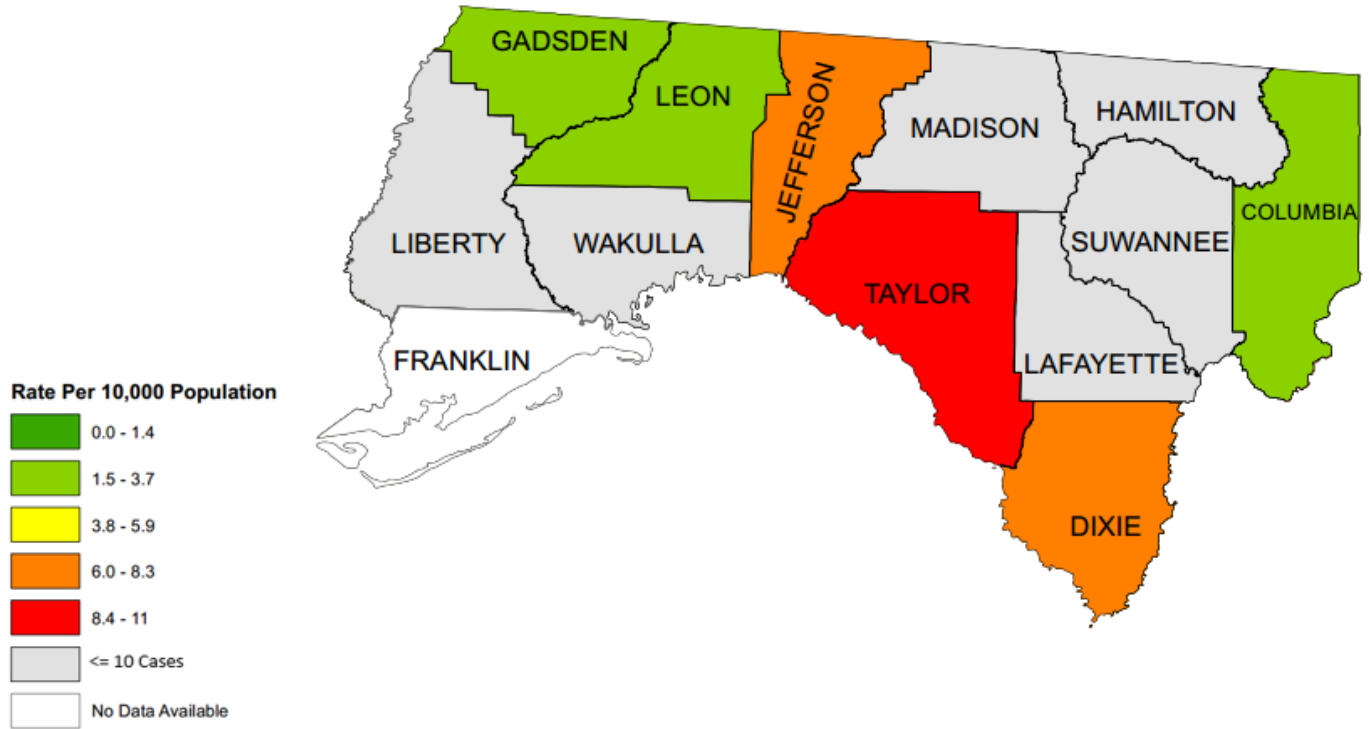
# Region 1



Geographic Area	Drug Overdose			Opioid Overdose			Opioid-antagonist		
	Non-Fatal	Rate	Fatal	Non-Fatal	Rate	Fatal	Non-Fatal	Rate	Fatal
Santa Rosa	60	3.49	1	21	1.22	1	21	1.22	1
Okaloosa	77	3.95	.	26	1.33	.	70	3.59	1
Walton	49	7.46	.	11	1.67	.	21	3.20	1
Holmes	4	.	.	.	.	.	.	.	.
Washington	7	.	.	.	.	.	1	.	.
Bay	50	2.79	.	17	0.95	.	12	0.67	.
Jackson	22	4.37	.	5	.	.	12	2.39	.
Gulf	7	.	.	.	.	.	1	.	.
<b>Total</b>	<b>276</b>	<b>2.63</b>	<b>1</b>	<b>80</b>	<b>0.76</b>	<b>1</b>	<b>138</b>	<b>1.31</b>	<b>3</b>

Note: 1. Population rate per 10,000 people.  
 2. Rate is not presented when frequency is less than or equal to 10.

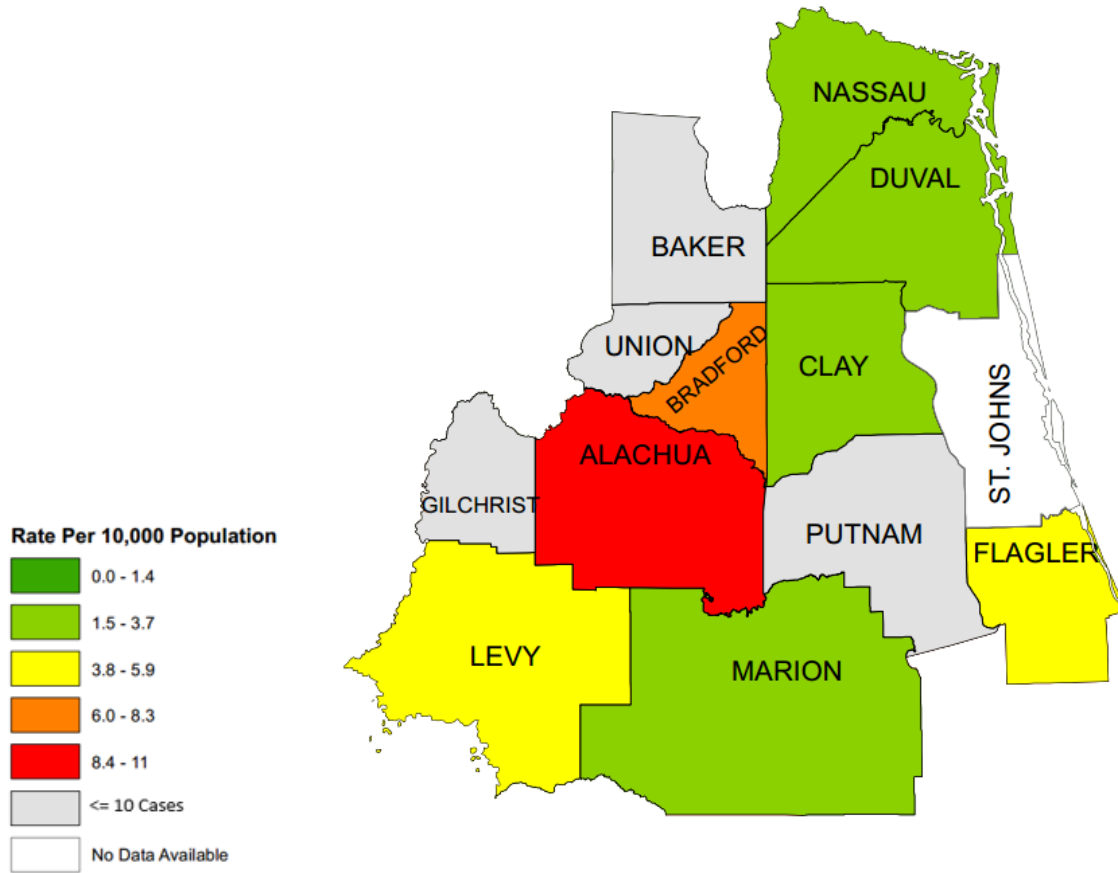
## Region 2



Geographic Area	Drug Overdose			Opioid Overdose			Opioid-antagonist		
	Non-Fatal	Rate	Fatal	Non-Fatal	Rate	Fatal	Non-Fatal	Rate	Fatal
Gadsden	16	3.29	.	1	.	1	4	.	.
Liberty	1	.	.	.	.	.	.	.	.
Leon	96	3.29	.	18	0.62	.	13	0.45	.
Wakulla	9	.	.	3	.	.	10	.	.
Jefferson	12	8.26	.	1	.	.	1	.	.
Taylor	24	10.80	.	9	.	.	16	7.20	.
Madison	6	.	.	.	.	.	2	.	.
Hamilton	3	.	.	1	.	.	.	.	.
Suwannee	4	.	.	1	.	.	.	.	.
Lafayette	1	.	.	.	.	.	4	.	.
Dixie	13	7.63	.	3	.	.	9	.	1
Columbia	20	2.89	.	12	1.73	.	28	4.04	.
<b>Total</b>	<b>205</b>	<b>3.40</b>	<b>1</b>	<b>49</b>	<b>0.81</b>	<b>1</b>	<b>87</b>	<b>1.44</b>	<b>1</b>

Note: 1. Population rate per 10,000 people.  
 2. Rate is not presented when frequency is less than or equal to 10.

# Region 3

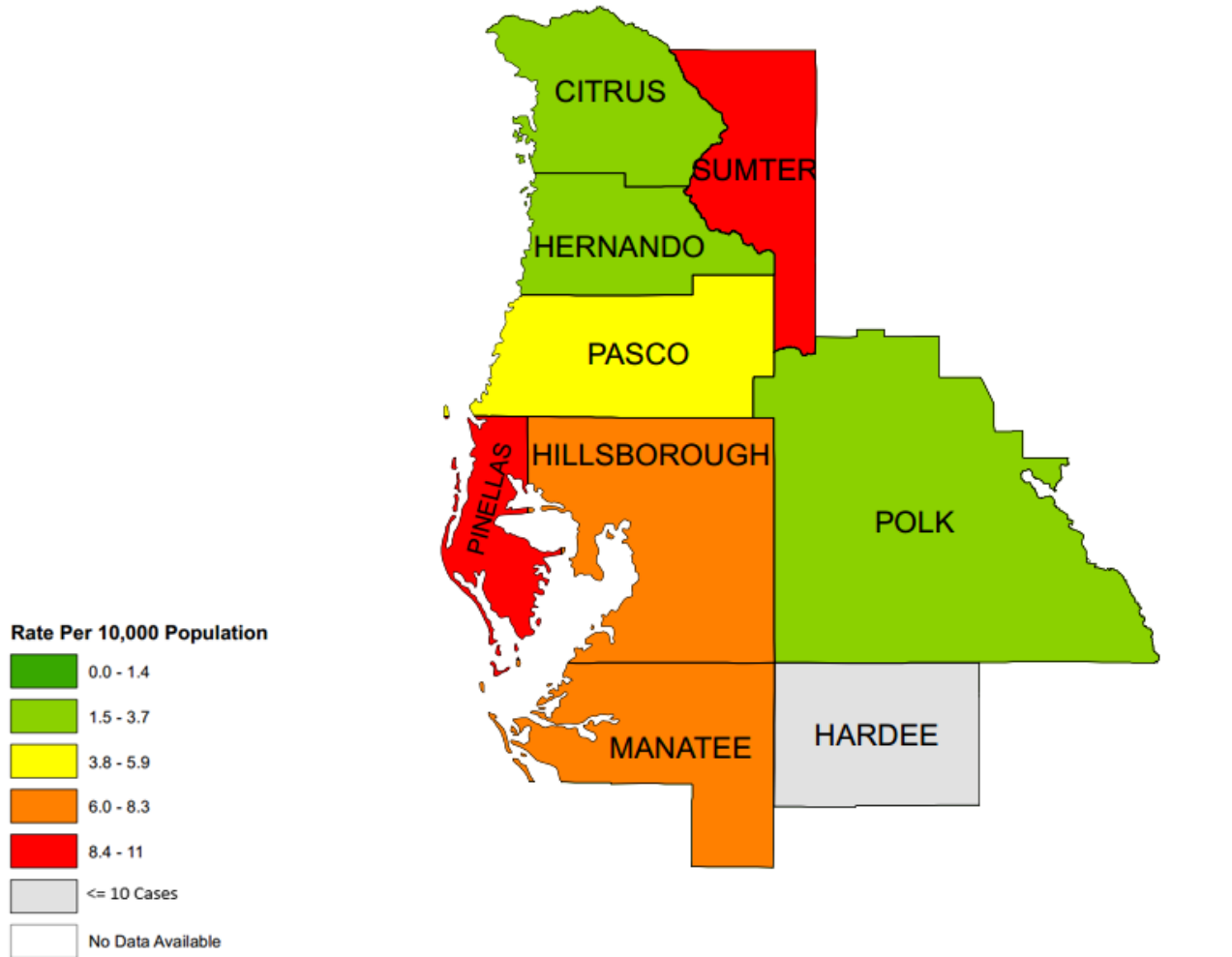


Geographic Area	Drug Overdose			Opioid Overdose			Opioid-antagonist		
	Non-Fatal	Rate	Fatal	Non-Fatal	Rate	Fatal	Non-Fatal	Rate	Fatal
Nassau	24	3.02	.	15	1.88	.	34	4.27	2
Duval	187	1.98	.	174	1.85	.	246	2.61	.
Baker	10	.	.	5	.	.	12	4.43	.
Union	10	.	.	2	.	.	2	.	.
Bradford	18	6.47	.	4	.	.	10	.	2
Gilchrist	5	.	.	4	.	.	8	.	.
Alachua	269	10.37	.	28	1.08	.	78	3.01	.
Levy	21	5.14	.	6	.	.	19	4.65	2
Marion	112	3.18	1	8	.	.	41	1.16	.
Putnam	2	.	.	.	.	.	3	.	.
Clay	62	2.94	1	11	0.52	.	22	1.04	.
Flagler	54	5.09	.	12	1.13	.	45	4.24	1
<b>Total</b>	<b>774</b>	<b>3.25</b>	<b>2</b>	<b>269</b>	<b>1.13</b>	<b>.</b>	<b>520</b>	<b>2.18</b>	<b>7</b>

Note: 1. Population rate per 10,000 people.  
 2. Rate is not presented when frequency is less than or equal to 10.



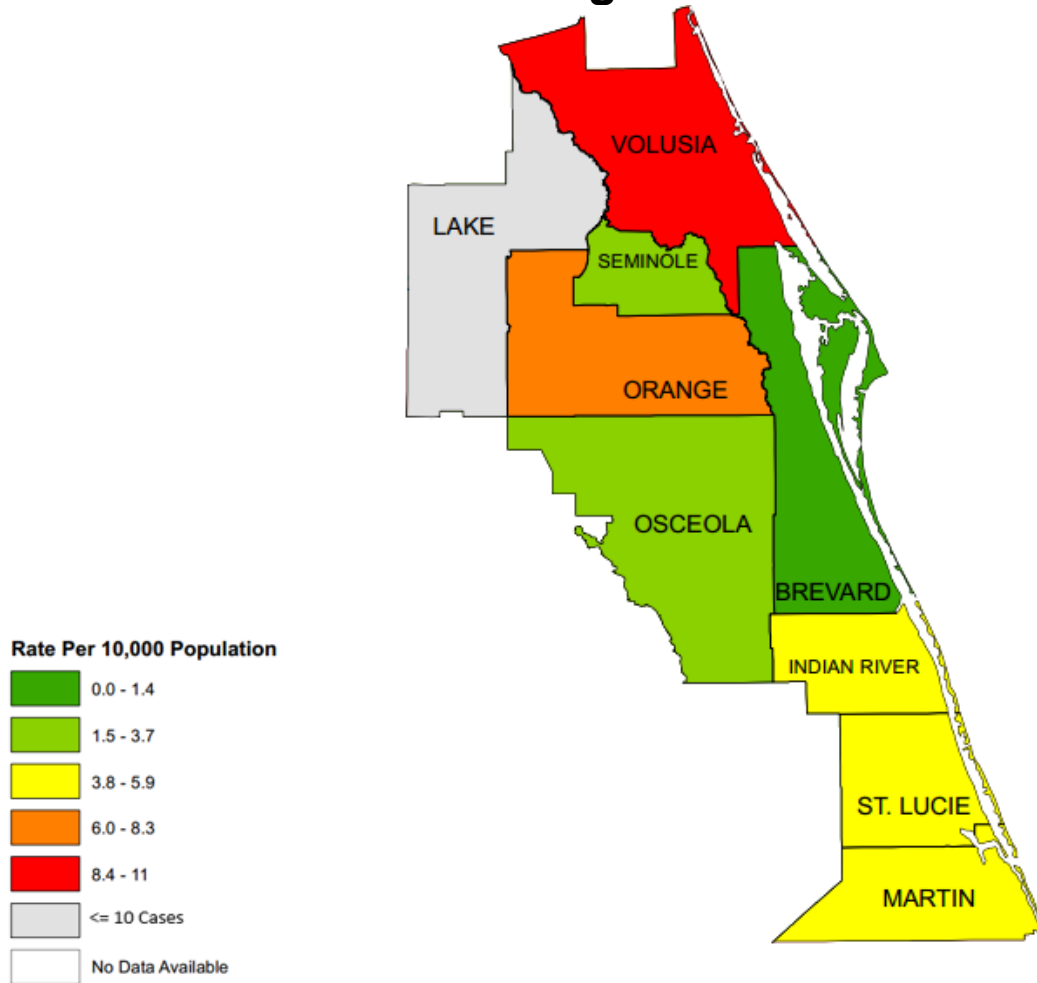
# Region 4



Geographic Area	Drug Overdose			Opioid Overdose			Opioid-antagonist		
	Non-Fatal	Rate	Fatal	Non-Fatal	Rate	Fatal	Non-Fatal	Rate	Fatal
Citrus	53	3.66	.	35	2.42	.	56	3.86	2
Hernando	55	3.00	.	21	1.15	.	19	1.04	.
Pasco	297	5.86	1	24	0.47	.	130	2.56	.
Pinellas	893	9.29	4	631	6.56	2	312	9.49	57
Hillsborough	1,022	7.36	2	331	2.38	.	715	5.15	30
Manatee	232	6.32	.	119	3.24	.	72	1.96	.
Hardee	4	.	.	2	.	.	10	.	.
Polk	220	3.31	.	38	0.57	.	393	5.92	17
Sumter	134	10.81	.	6	.	.	31	2.50	.
<b>Total</b>	<b>2,910</b>	<b>6.66</b>	<b>7</b>	<b>1,207</b>	<b>2.76</b>	<b>2</b>	<b>2,338</b>	<b>5.35</b>	<b>106</b>

Note: 1. Population rate per 10,000 people.  
 2. Rate is not presented when frequency is less than or equal to 10

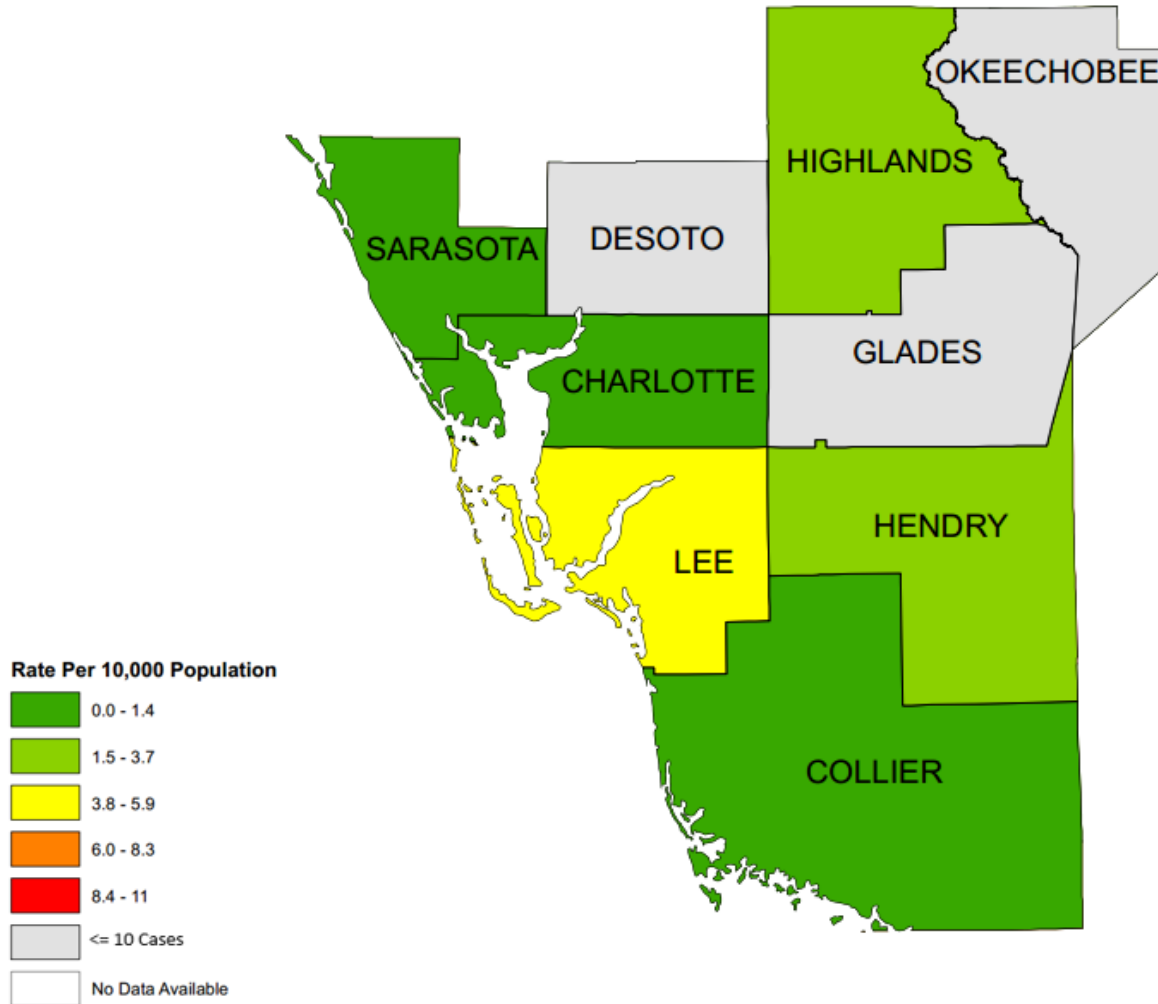
# Region 5



Geographic Area	Drug Overdose			Opioid Overdose			Opioid-antagonist		
	Non-Fatal	Rate	Fatal	Non-Fatal	Rate	Fatal	Non-Fatal	Rate	Fatal
Lake	9	.	.	1	.	.	7	.	.
Volusia	494	9.41	.	14	0.27	.	27	0.51	5
Seminole	127	2.78	4	69	1.51	4	44	0.96	1
Orange	1,005	7.63	5	428	3.25	3	567	4.30	22
Osceola	78	2.30	.	28	0.82	.	51	1.50	1
Brevard	66	1.14	.	4	.	.	30	0.52	1
Indian River	60	4.00	.	13	0.87	.	26	1.73	.
St. Lucie	156	5.20	.	41	1.37	.	79	2.63	.
Martin	71	4.66	.	18	1.18	.	16	1.05	.
<b>Total</b>	<b>2,066</b>	<b>4.98</b>	<b>9</b>	<b>616</b>	<b>1.48</b>	<b>7</b>	<b>847</b>	<b>2.04</b>	<b>30</b>

Note: 1. Population rate per 10,000 people.  
 2. Rate is not presented when frequency is less than or equal to 10.

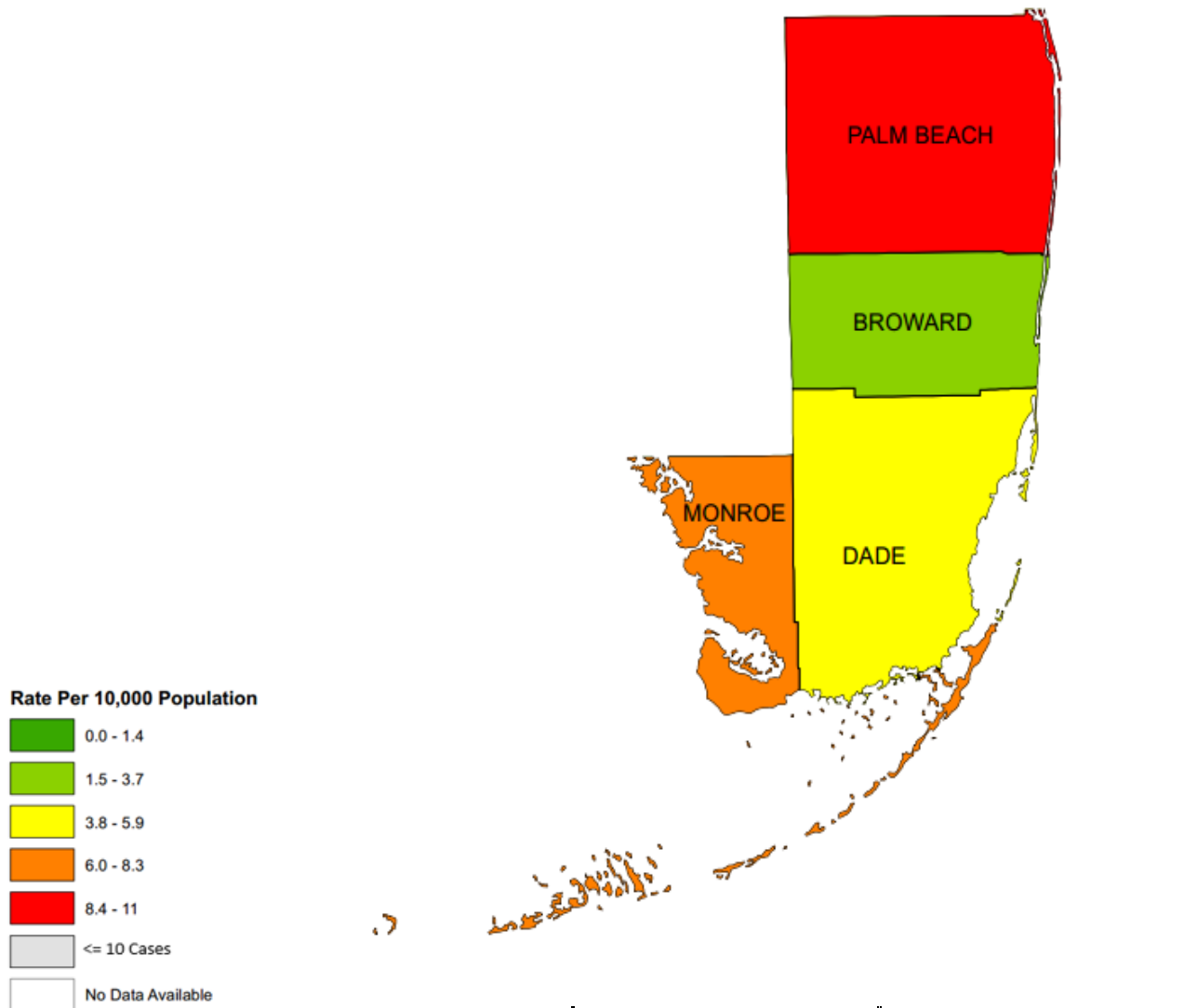
## Region 6



Geographic Area	Drug Overdose			Opioid Overdose			Opioid-antagonist		
	Non-Fatal	Rate	Fatal	Non-Fatal	Rate	Fatal	Non-Fatal	Rate	Fatal
Sarasota	21	0.52	.	6	.	.	10	.	1
Desoto	5	.	.	1	.	.	6	.	.
Highlands	27	2.63	.	7	.	.	6	.	.
Okeechobee	9	.	.	4	.	.	12	2.89	.
Charlotte	11	0.63	.	.	.	.	.	.	.
Glades	4	.	.	.	.	.	.	.	.
Lee	358	5.11	.	2	.	.	66	0.94	.
Hendry	11	2.84	.	5	.	.	10	.	1
Collier	49	1.37	.	40	1.12	.	72	2.01	.
<b>Total</b>	<b>495</b>	<b>2.64</b>	.	<b>65</b>	<b>0.35</b>	.	<b>182</b>	<b>0.97</b>	<b>2</b>

Note: 1. Population rate per 10,000 people.  
 2. Rate is not presented when frequency is less than or equal to 10.

# Region 7



Geographic Area	Drug Overdose			Opioid Overdose			Opioid-antagonist		
	Non-Fatal	Rate	Fatal	Non-Fatal	Rate	Fatal	Non-Fatal	Rate	Fatal
Palm Beach	1,390	9.85	9	974	6.90	8	612	4.34	.
Broward	549	2.91	3	150	0.80	.	224	1.19	.
Miami-Dade	1,216	4.41	2	177	0.64	.	399	1.45	.
Monroe	51	6.60	.	8	.	.	39	5.05	.
<b>Total</b>	<b>3,206</b>	<b>5.23</b>	<b>14</b>	<b>1,309</b>	<b>2.14</b>	<b>8</b>	<b>1,274</b>	<b>2.08</b>	<b>.</b>

Note: 1. Population rate per 10,000 people.  
 2. Rate is not presented when frequency is less than or equal to 10.