

NON-FATAL OPIOID OVERDOSE SURVEILLANCE

2018 Q2 REPORT



Florida Department of Health –Enhanced State Opioid Overdose Surveillance

FLESOOS.com

1 / FLORIDA 2018 Q2

The purpose of this report is to describe and identify non-fatal (morbidity) geographically-specific and other statistically significant changes in the rate of **all drug** and **opioid-involved overdoses**, which occurred in Florida during 2018 Q2 (April—June). Non-fatal overdose data were analyzed by the Florida Department of Health’s Enhanced State Opioid Overdose Surveillance Program, using Florida’s Emergency Medical Services Tracking and Reporting System (EMSTARS) data.

Key Findings in Florida 2018 Q2:

- EMS transports peaked on June 1st, 2018 at 135 non-fatal all drug overdoses and 57 non-fatal opioid-involved overdoses.
- 2.16% of all 2018 Q2 EMS runs, or 9,392 events, are related to non-fatal all drug overdoses; where 0.73%, or 3,149 events, are related to non-fatal opioid-involved overdose.
- Non-fatal all drug overdose rate decreased 14.7% from 2017 Q2 to 50.3 per 100,000 persons.
- Non-fatal opioid-involved overdose rate declined 35.7% from 2017 Q2 to 16.9 per 100,000 persons.
- Significant trends between 2016 Q2, 2017 Q2, and 2018 Q2 were not observed for either all drug or opioid-involved overdoses.
- Persons aged 25-34 years were more likely than any other age group to experience either all drug or opioid-involved non-fatal overdoses.
- In descending order, the most substantial number of non-fatal all drug overdose occurred in Palm Beach, Hillsborough, Duval, Miami-Dade, and Orange counties. The highest rates, in descending order, occurred in Alachua, Escambia, Walton, Duval, and Marion counties.
- In descending order, the most substantial numbers of non-fatal opioid-involved overdoses occurred in Palm Beach, Pinellas, Hillsborough, Brevard, and Orange counties. The highest rates, in descending order, occurred in Escambia, Palm Beach, Brevard, Pinellas, and Manatee counties.

Non-fatal Overdose (Morbidity), Florida 2018 Q2

DATA SOURCE

Non-fatal overdose counts were derived from Florida's EMSTARS database, which receives information from EMS agencies that represent 90.83% of the total number of prehospital EMS runs in Florida.

CASE DEFINITIONS

	EMSTARS V (1.4)	EMSTARS V (3)
All drug overdose	The primary or secondary impression is "Poisoning/Drug Ingestion;" or, any case where the medication administered is naloxone, and the patient exhibits a positive response, no matter the primary or secondary impression listed.	The primary or secondary impression is any of the following ICD-10 CM "T36 - T50, F11 - F16, F18 - F19" codes.
Opioid-involved overdose	The medication administered is naloxone and patient exhibits positive response, no matter the primary or secondary impression listed.	The primary or secondary impression of any of the following ICD-10 CM "T40.1 - T40.4, T40.60, T40.69, F11" codes.

OTHER DEFINITIONS OR LIMITATIONS

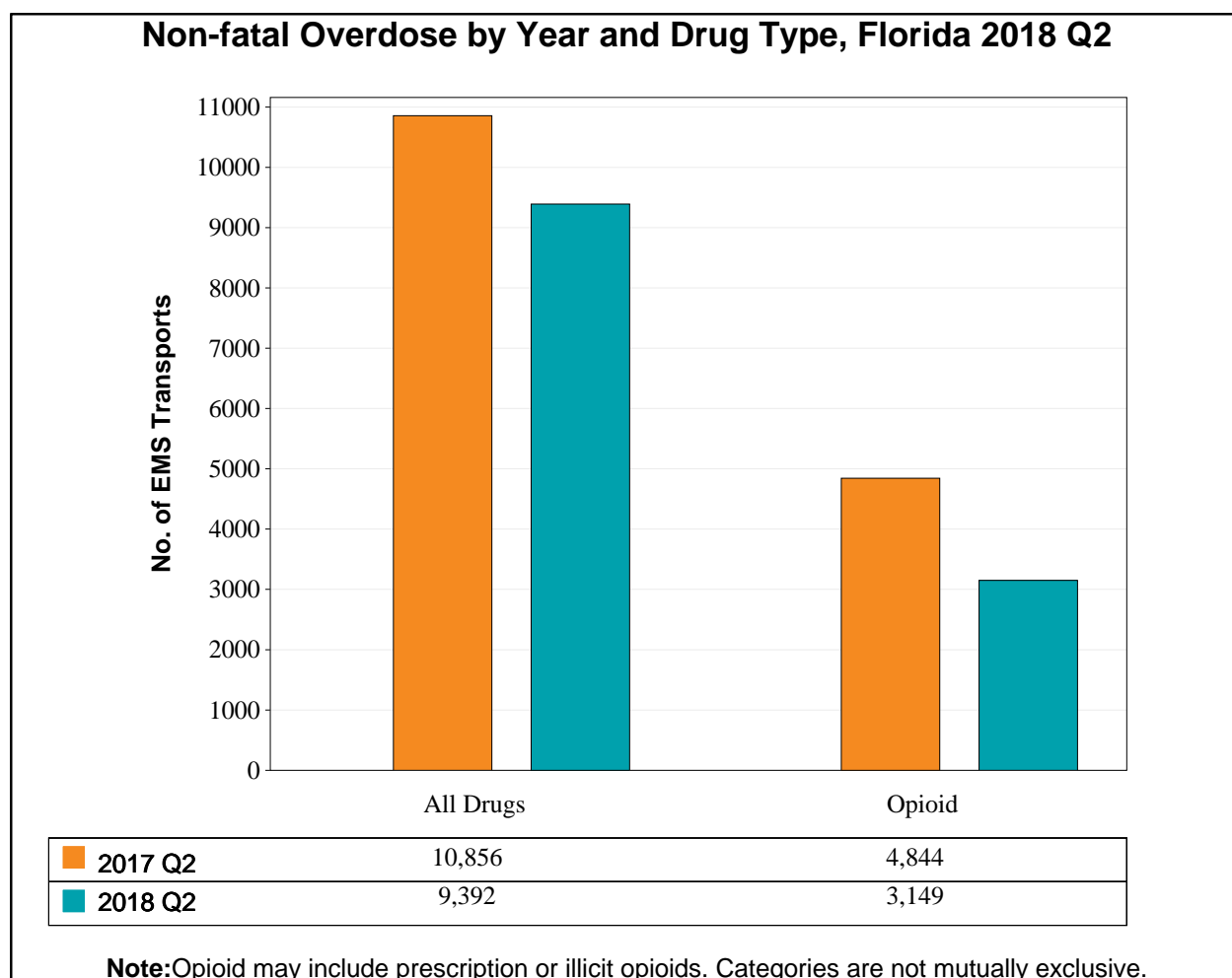
Numeric discrepancy between FL-ESOOS and CDC may exist due to timing of data pull. CDC data pulled on 10/02/2018. For this report FL-ESOOS data pulled on 11/08/2018

EMS transports indicate the incident-patient record meets the following criteria: 1) are responding to an emergency medical situation (e.g., response to 9-1-1 call) and transported to a hospital; or 2) are responding to an emergency medical situation where the patient was treated and refused transport to the hospital; 3) exclude EMS transfers when a patient is transferred between hospitals or medical care facilities; 4) exclude children 10 years of age or younger.

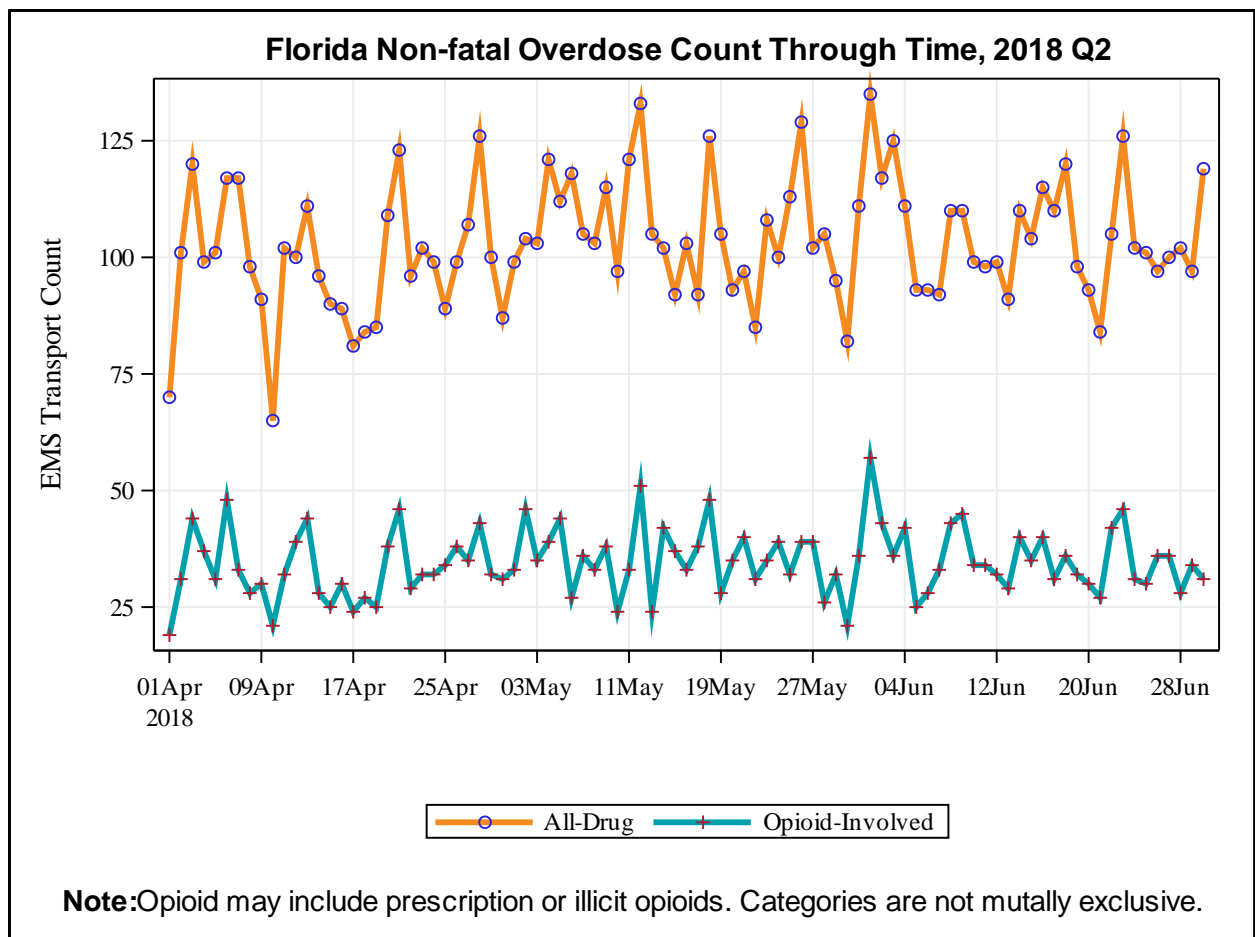
Rates per 100,000 persons were estimated using data from the 2016 U.S. Census Bureau, 2012-2016 American Community Survey 5-Year Estimates. In 2016, the estimated population of Florida ≥ 11 years of age was 18,109,300. Further, the U.S. Census Bureau estimated an annual increase of 1.5% for the Floridian population until 2020. For 2018, we estimated the population of Florida ≥ 11 years of age to be 18,675,035.

ICD-10 CM CODE DESCRIPTION

Poisoning by: T36-T50 (range includes all drugs), T40.1 (heroin), T40.2 (other opioids), T40.3 (methadone), T40.4 (other synthetic narcotics), T40.60 (unspecified narcotics), T40.69 (other narcotics), F11 (opioid related), F12 (cannabis related), F13 (sedative, hypnotic, or anxiolytic related), F14 (cocaine related), F15 (other stimulant related), F16 (hallucinogen related), F18 (inhalant related), and F19 (other psychoactive substance related).

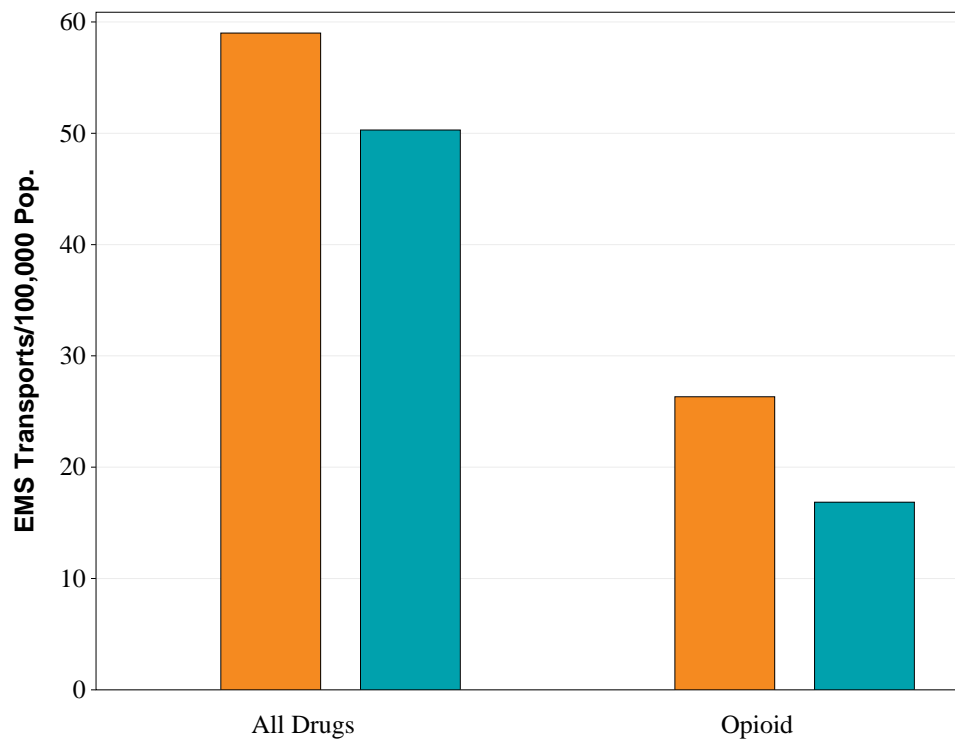


- 9,392 total non-fatal all drug overdose occurrences were counted for 2018 Q2, 1,464 less than 2017 Q2. Likewise, 3,149 non-fatal opioid-involved overdoses were observed, 1,695 less than 2017 Q2.
- 2.16% of all 2018 Q2 EMS runs are related to all non-fatal drug overdoses, a significant difference from 2.69% of all 2017 Q2 EMS runs.
- 0.73% of all 2018 Q2 EMS runs are related to non-fatal opioid-involved overdoses, a significant difference from 1.20% of all 2017 Q2 EMS runs.



- EMS transports peaked on June 1st, 2018 at 135 non-fatal all drug overdoses and 57 non-fatal opioid-involved overdoses.

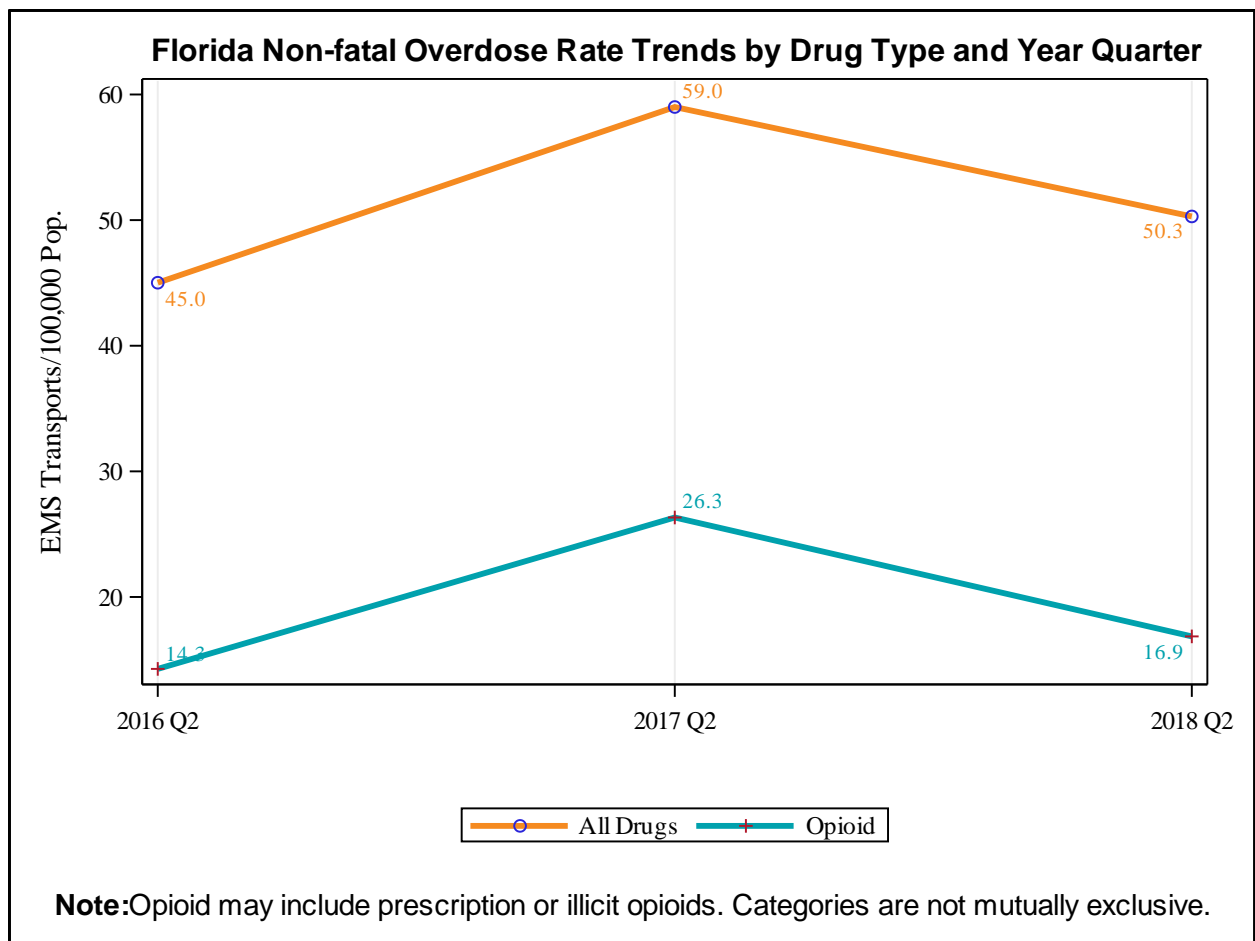
Non-fatal Overdose Rate by Drug Type and Year, Florida 2018 Q2



2017 Q2	59.0	26.3
2018 Q2	50.3	16.9

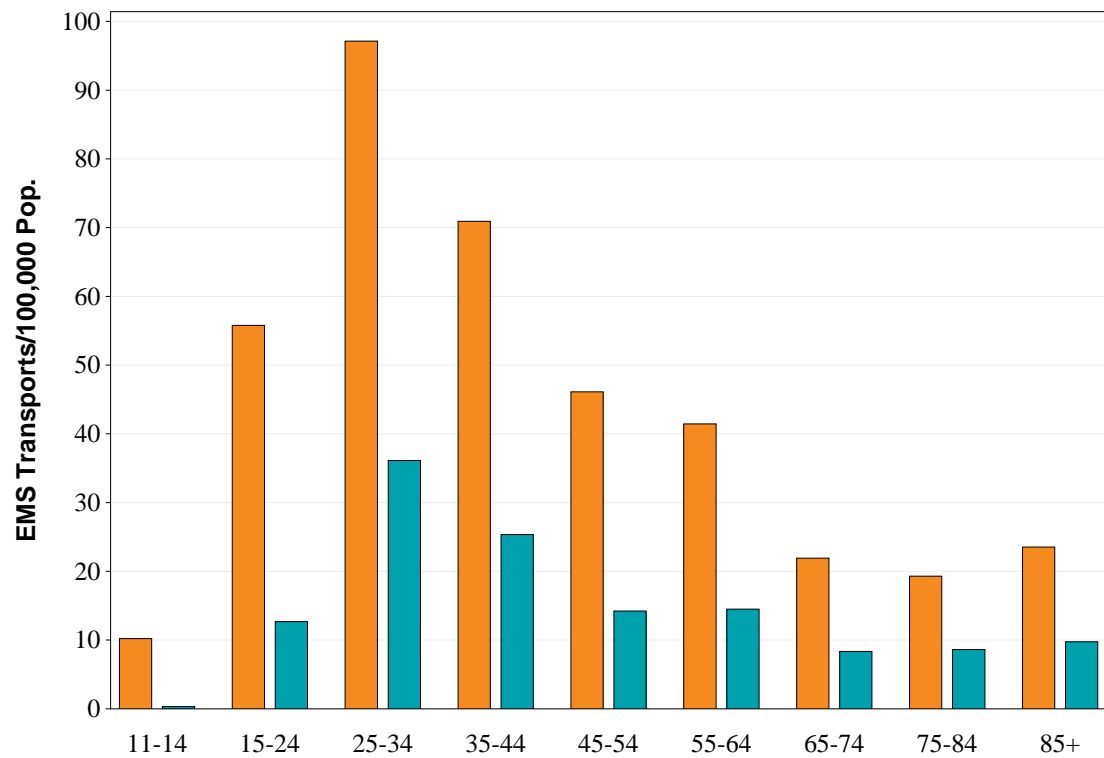
Note: Opioid may include prescription or illicit opioids. Categories are not mutually exclusive.

- The estimated 2018 Q2 non-fatal all drug overdose rate is 50.3 per 100,000 persons. An 14.7% rate decrease from 2017 Q2.
- Non-fatal opioid-involved 2018 Q2 overdose rate is estimated at 16.9 per 100,000 persons. A 35.7% decline in rate from 2017 Q2.



- Between 2016 Q2, 2017 Q2, and 2018 Q2, significant trends were not observed for all non-fatal drug or opioid-involved overdose-rate.

Non-fatal Overdose Rate by Age and Drug Type, Florida 2018 Q2

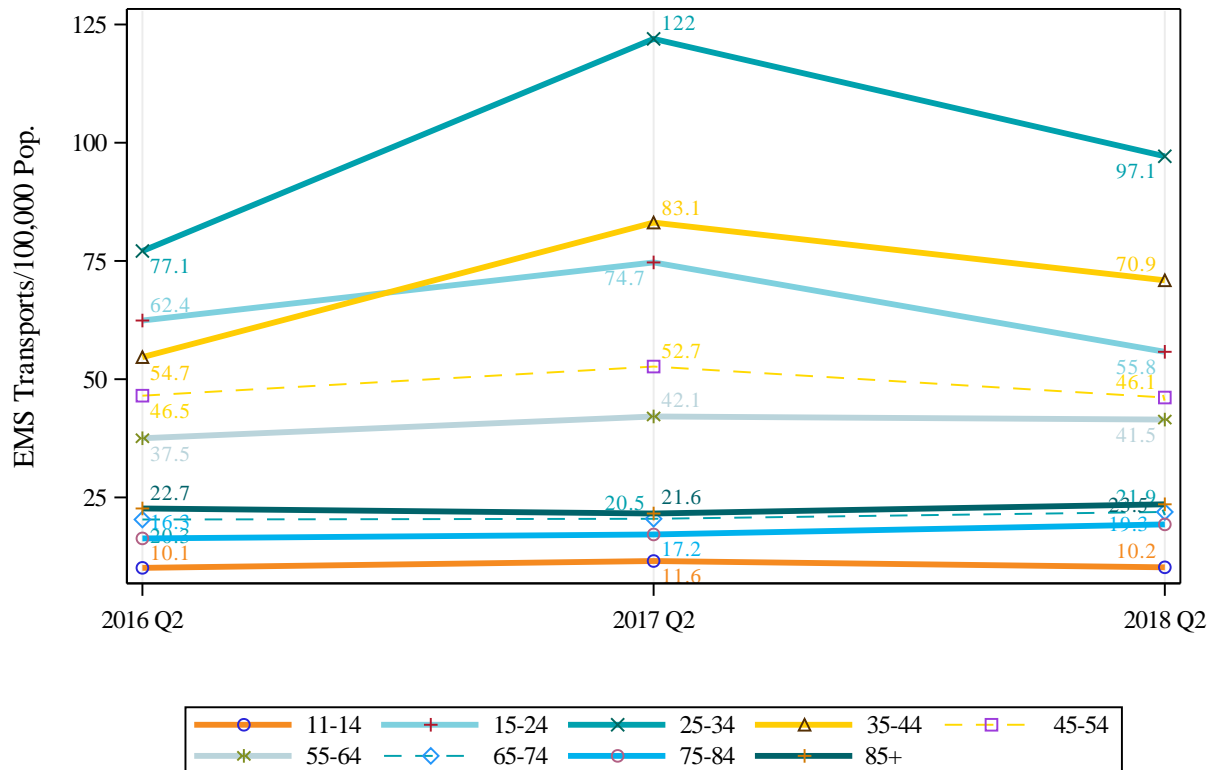


All Drugs	10.2	55.8	97.1	70.9	46.1	41.5	21.9	19.3	23.5
Opioid	0.3	12.7	36.1	25.3	14.2	14.5	8.3	8.6	9.8

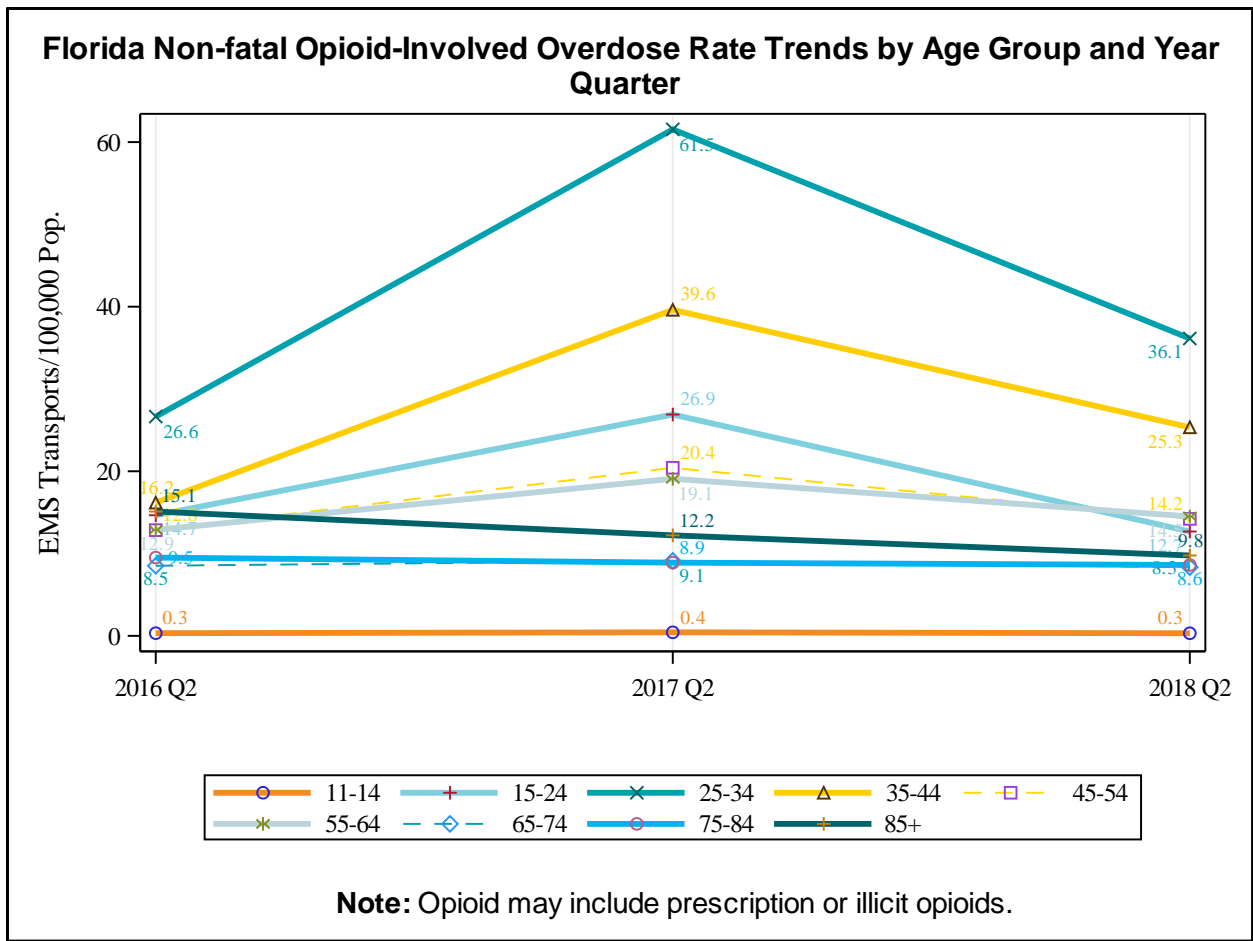
Note:Opioid may include prescription or illicit opioids. Categories are not mutually exclusive.

- Persons aged 25-34 years were at the highest risk than any other age group for all non-fatal drug overdose and opioid-involved overdose.

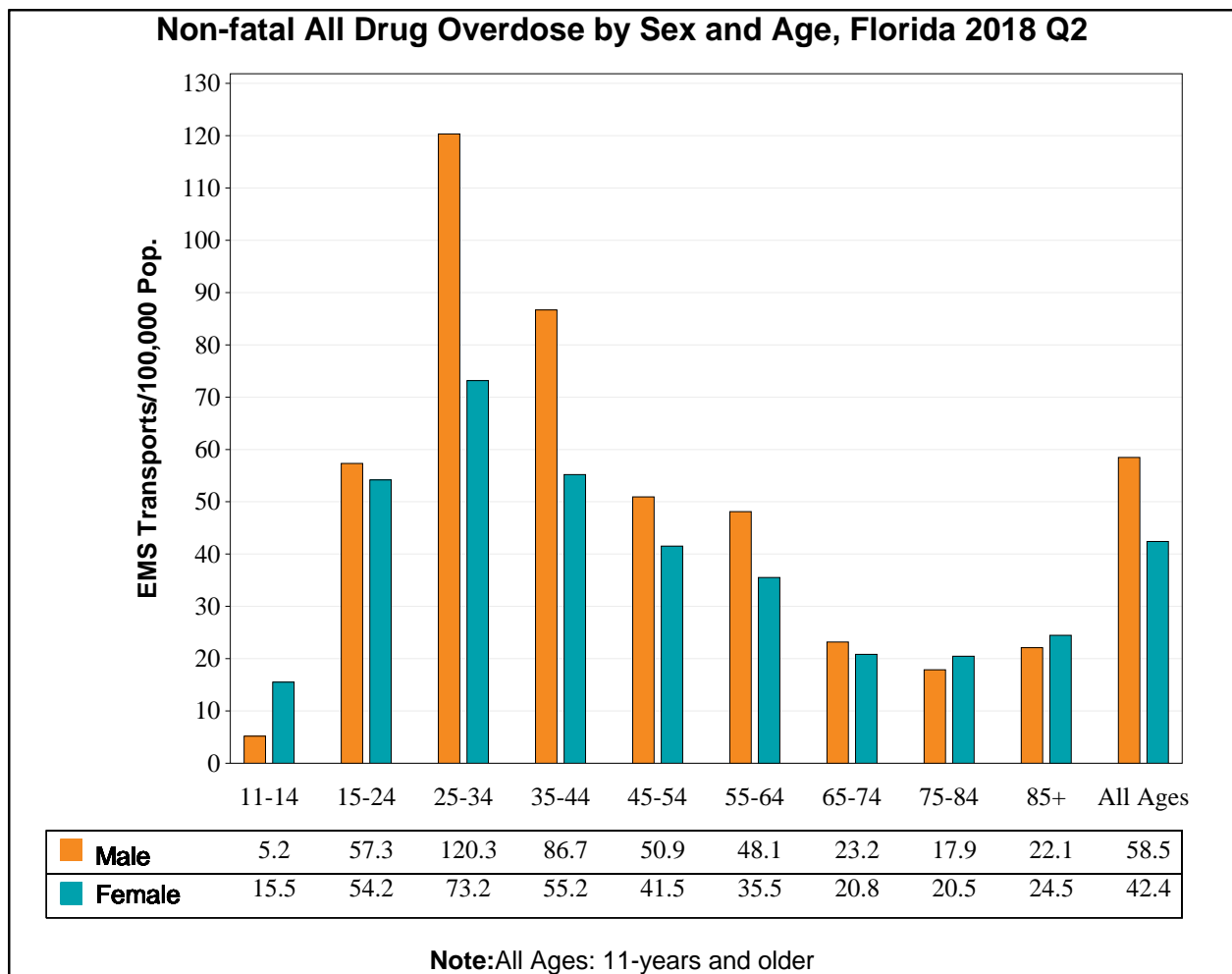
Florida Non-fatal All Drug Overdose Rate Trends by Age Group and Year Quarter



Note: Opioid may include prescription or illicit opioids.

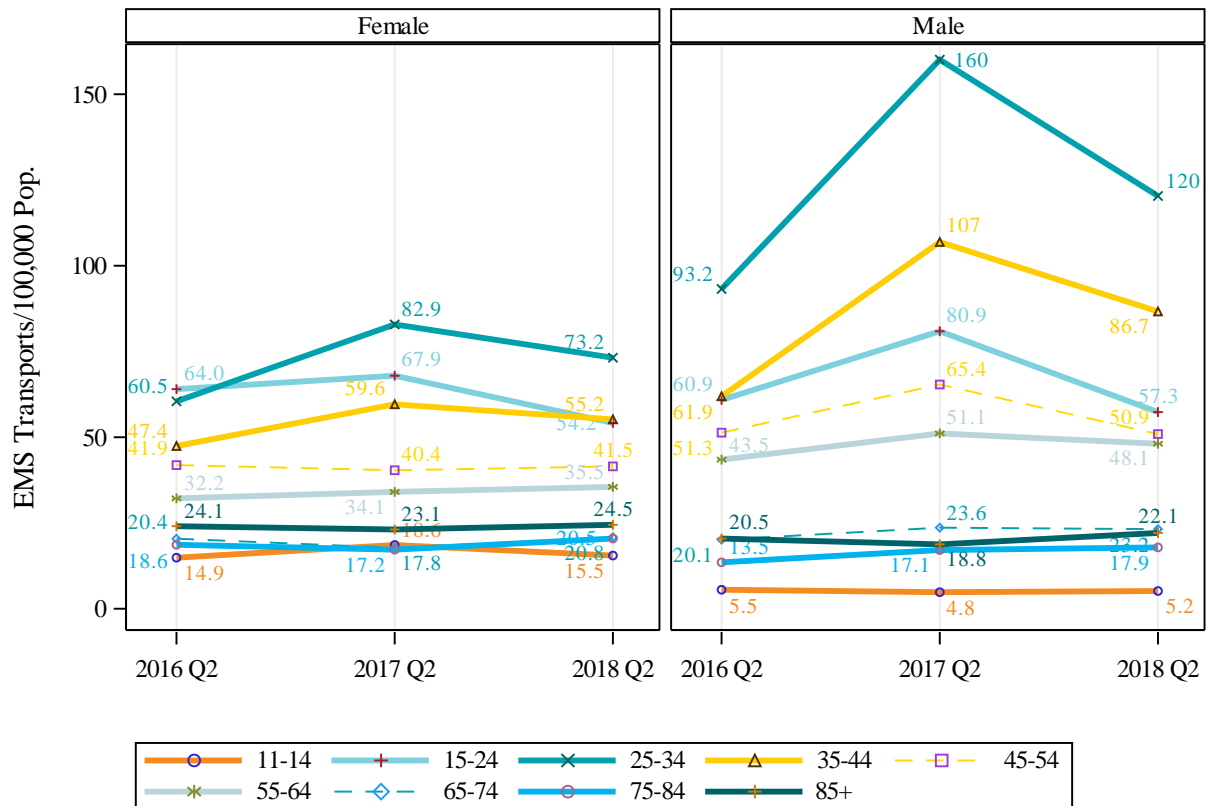


- Between 2016 Q2, 2017 Q2, and 2018 Q2, significant trends were not observed for any non-fatal drug or opioid-involved overdose for all age groups.



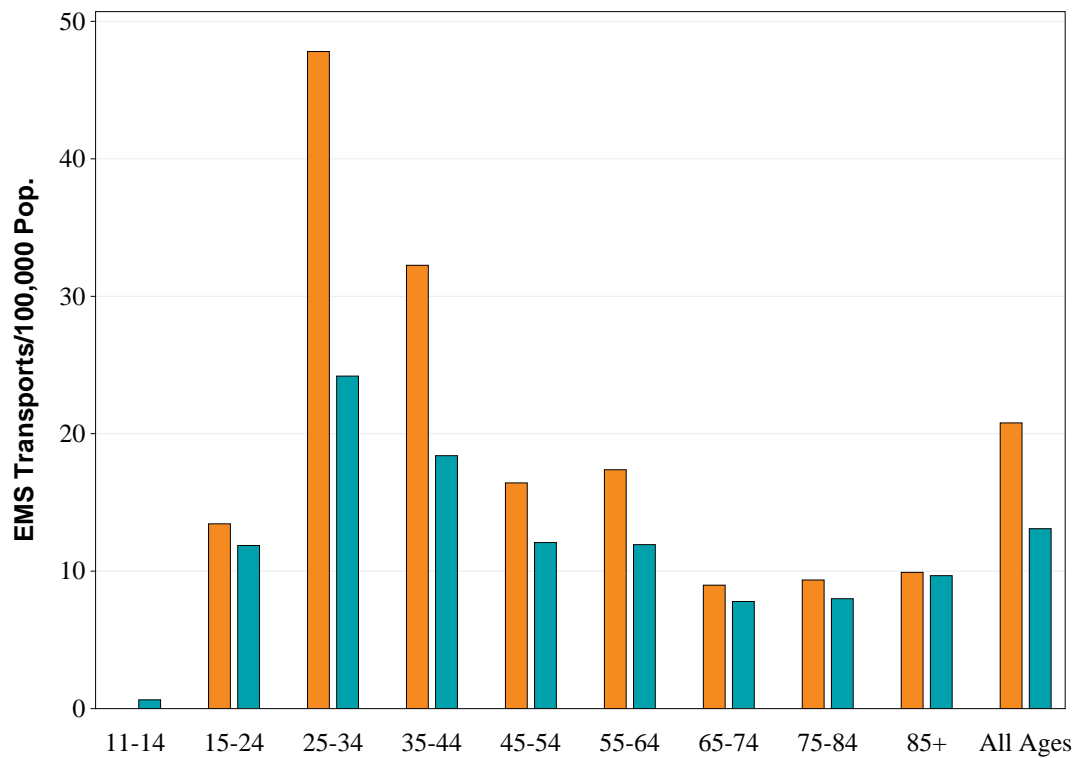
- Males aged 25-34 years experienced non-fatal all-cause drug overdose more frequently and at a higher rate than females of the same age category, in 2018 Q2.
- Overall in 2018 Q2, males, particularly younger men, were transported for all cause non-fatal drug overdose at a higher rate than females.

Non-fatal All Drug Overdose Rate Trends by Age and Sex, Florida 2018 Q2



- Between 2016 Q2, 2017 Q2, and 2018 Q2, all non-fatal drug overdose significant trends were not observed for either males or females among all age groups.

Non-fatal Opioid-Involved Overdose by Sex and Age, Florida 2018 Q2



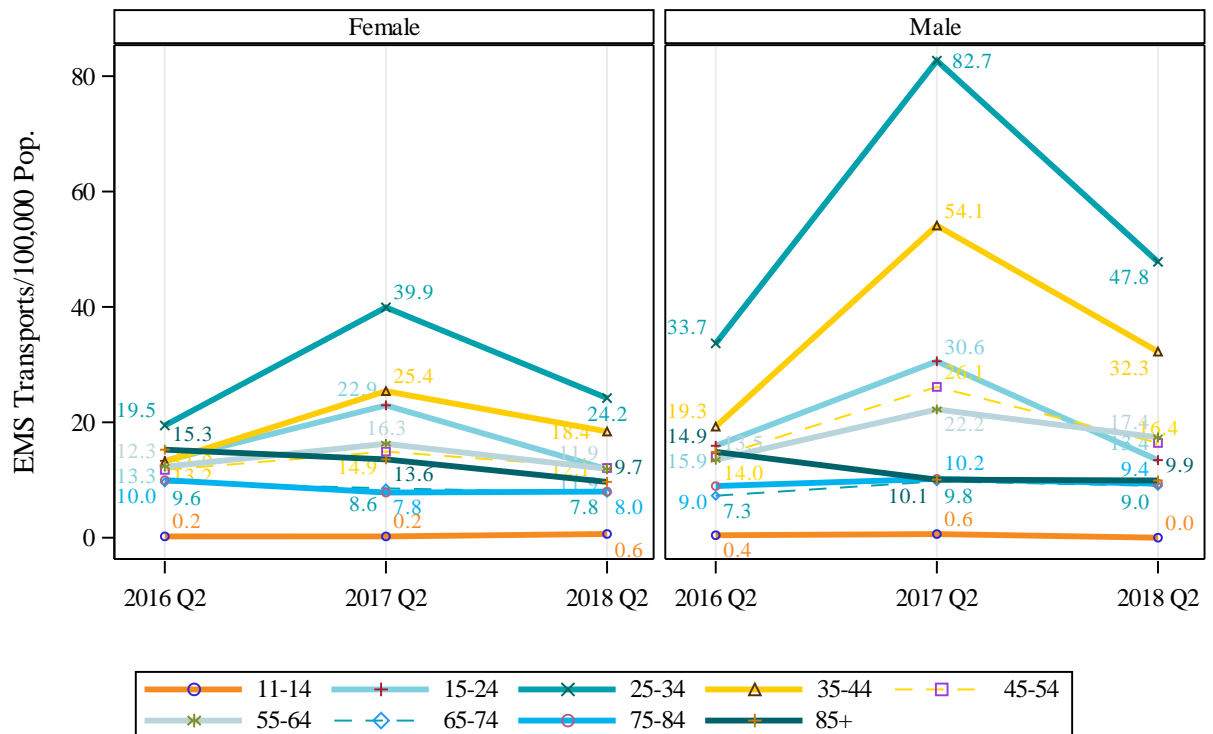
Male	0.0	13.4	47.8	32.3	16.4	17.4	9.0	9.4	9.9	20.8
Female	0.6	11.9	24.2	18.4	12.1	11.9	7.8	8.0	9.7	13.1

Note:Opioid may include prescription or illicit opioids.

Note:All Ages: 11-years and older

- Males aged 25-34 years experienced non-fatal opioid-involved overdose more frequently and at a higher rate than females of the same age category, in 2018 Q2.
- Overall in 2018 Q2, males, particularly younger men, were transported for non-fatal opioid-involved overdose at a higher rate than females.

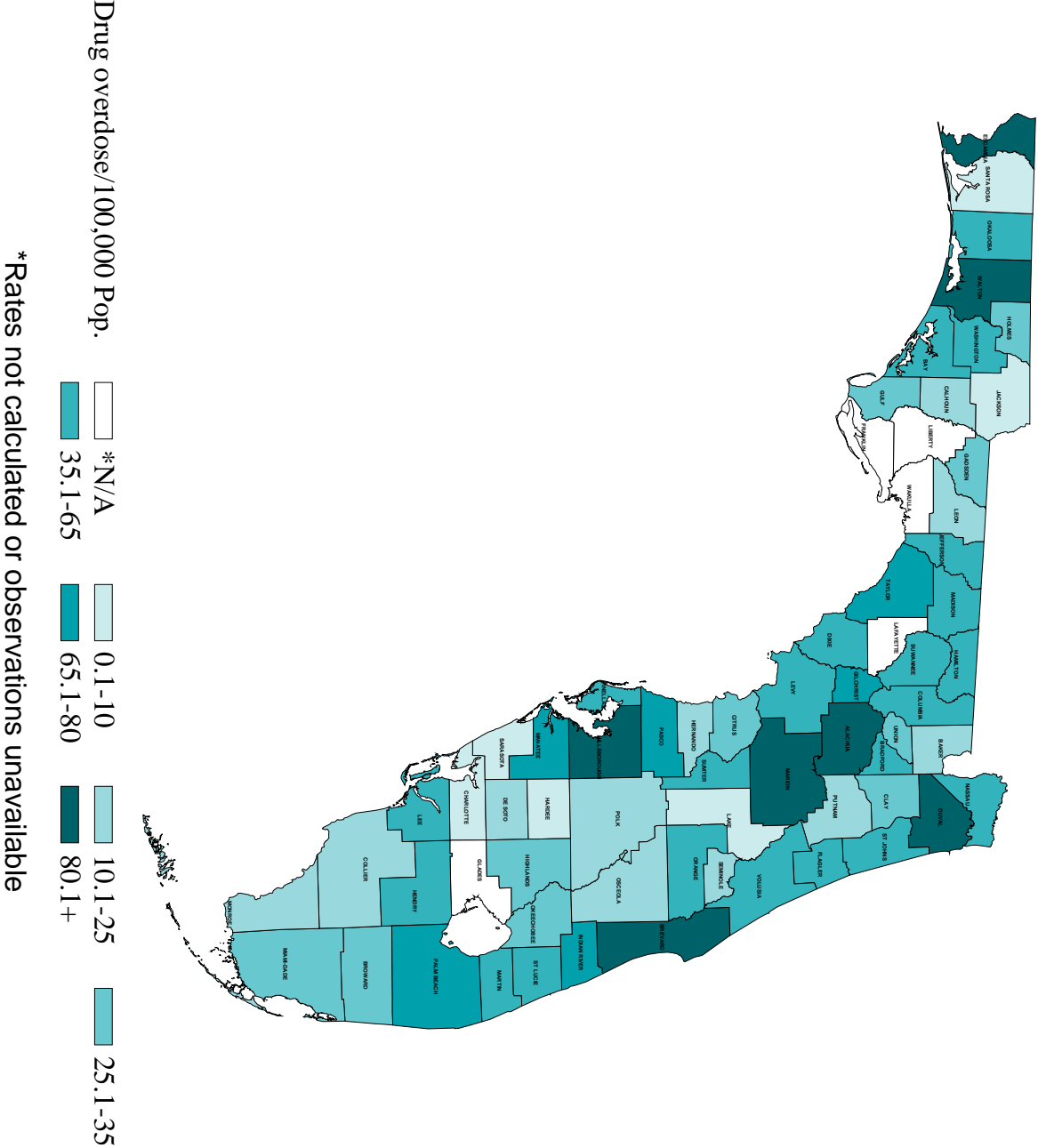
Non-fatal Opioid-Involved Overdose Rate Trends by Age and Sex, Florida 2018 Q2



Note: Opioid may include prescription or illicit opioids.

- Between 2016 Q2, 2017 Q2, and 2018 Q2, non-fatal opioid-involved overdose significant trends were not observed for either males or females among all age groups.

Florida County Map of Non-fatal All Drug Overdose Estimates, 2018 Q2



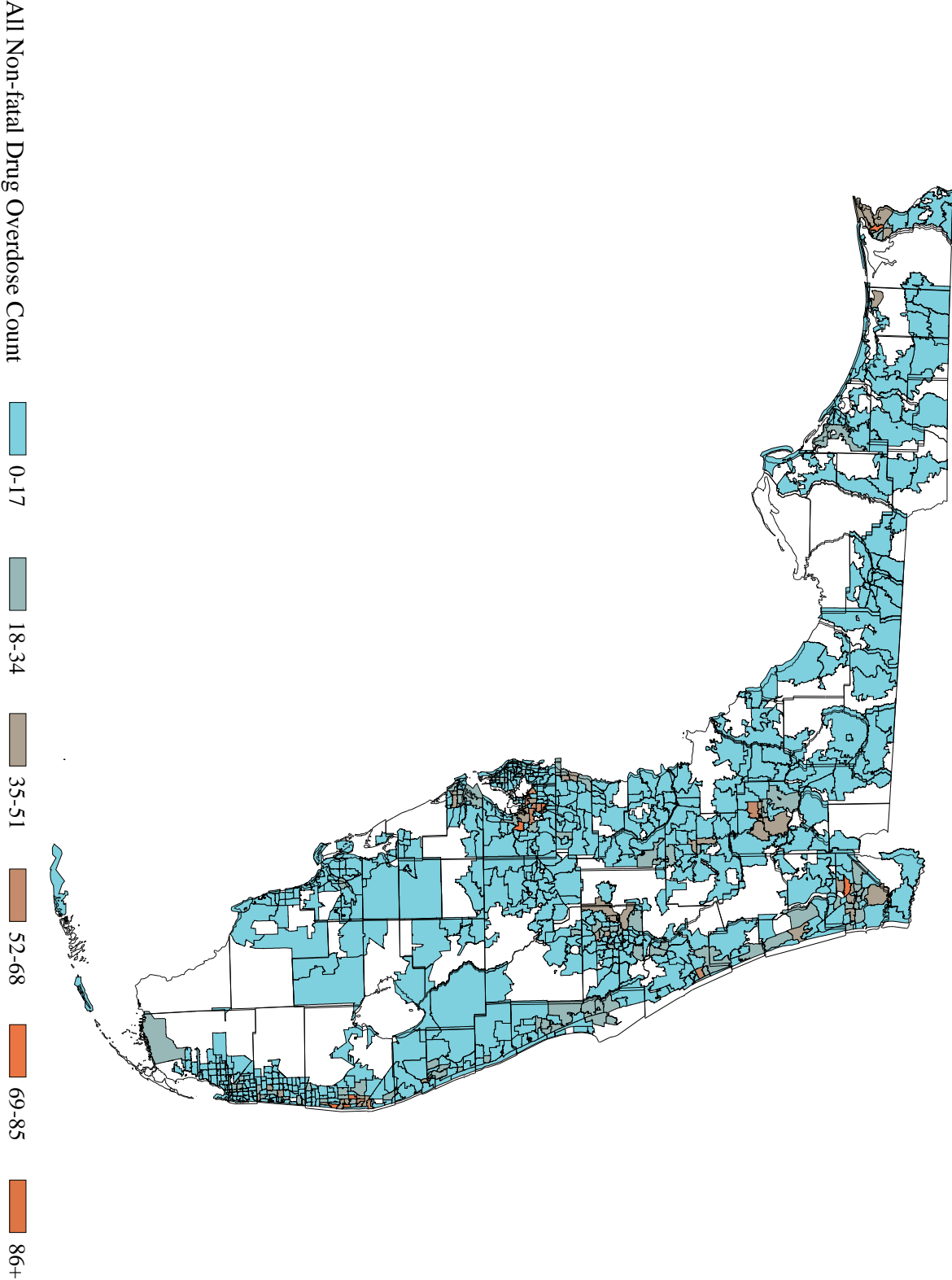
Florida County Map of Non-fatal Opioid-Involved Overdose Estimates, 2018 Q2

Opioid overdose/100,000 Pop.

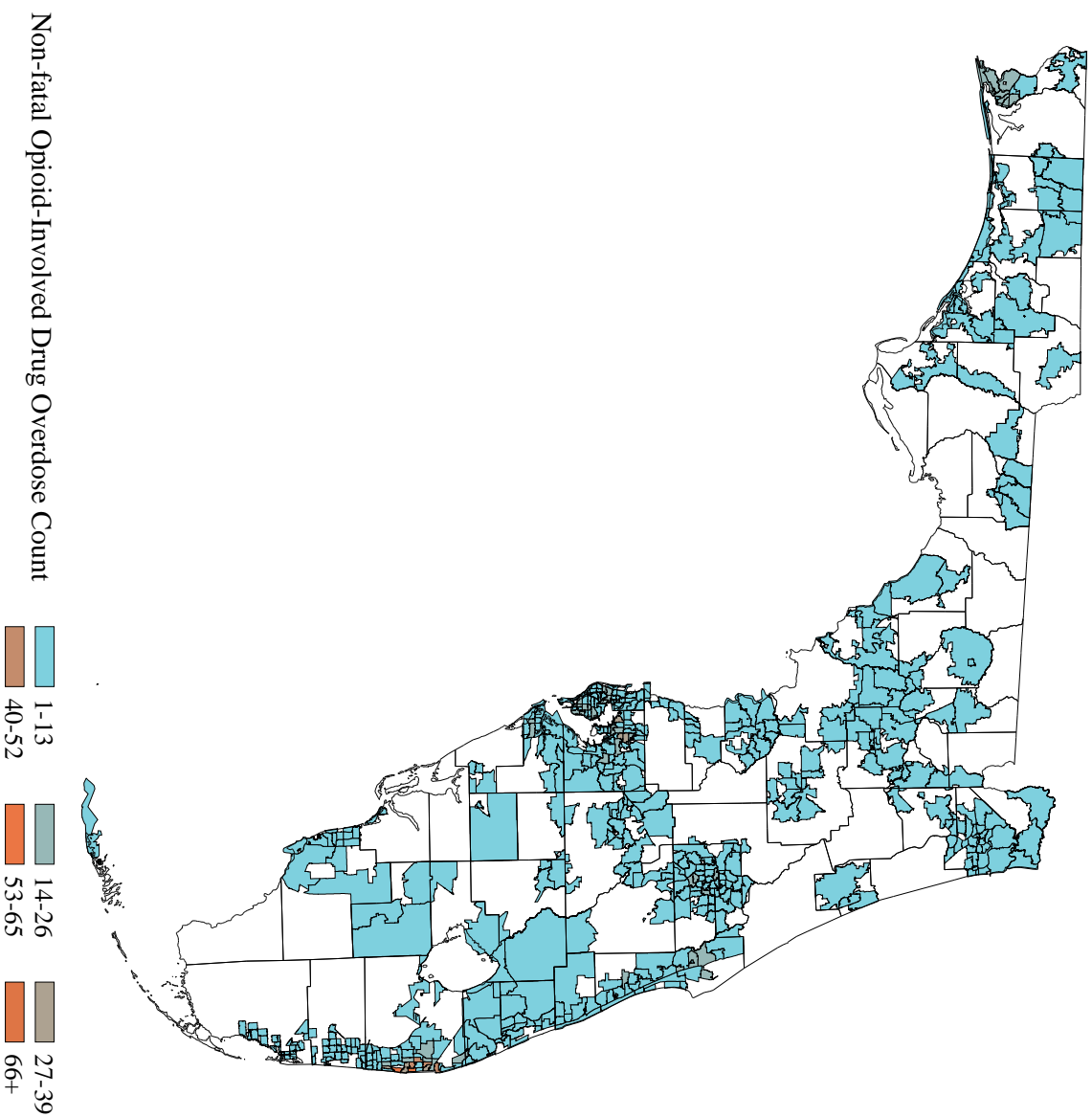
- *N/A
- 0.1-0.3
- 0.31-3
- 3.1-7.5
- 7.51-15
- 15.1-25
- 25.1+

*Rates not calculated or observations unavailable

Florida County All Non-fatal Drug Overdose Counts by ZIP Code, 2018 Q2



Florida County Non-fatal Opioid-Involved Overdose Counts by ZIP Code, 2018 Q2



Florida Counties with the Highest Count and Rate of Non-fatal Overdoses—Florida 2018 Q2

ALL DRUG-INVOLVED NON-FATAL OVERDOSE

RANK	COUNTY (COUNT)	RANK	COUNTY (RATE PER 100,000)
1	Palm Beach (1,031)	1	Alachua (149.0)
2	Hillsborough (1,009)	2	Escambia (136.6)
3	Duval (748)	3	Walton (96.5)
4	Miami-Dade (686)	4	Duval (90.2)
5	Orange (601)	5	Marion (85.1)
6	Broward (577)	6	Brevard (81.9)
7	Brevard (441)	7	Hillsborough (81.5)
8	Pinellas (421)	8	Taylor (78.8)
9	Escambia (391)	9	Palm Beach (77.3)
10	Alachua (362)	10	Pasco (72.3)

OPIOID-INVOLVED NON-FATAL OVERDOSE

RANK	COUNTY (COUNT)	RANK	COUNTY (RATE PER 100,000)
1	Palm Beach (726)	1	Escambia (58.7)
2	Pinellas (417)	2	Palm Beach (54.5)
3	Hillsborough (365)	3	Brevard (47.5)
4	Brevard (256)	4	Pinellas (46.3)
5	Orange (188)	5	Manatee (31.3)
6	Escambia (139)	6	Walton (29.9)
7	Broward (132)	7	Hillsborough (29.5)
8	Duval (132)	8	Okaloosa (26.6)
9	Manatee (109)	9	Dixie (26.5)
10	St Lucie (52)	10	Gilchrist (25.4)

Non-fatal Drug Overdose (Morbidity), Florida 2018 Q2

RATE PER 100,000 FLORIDIANS ≥11-YEARS.

OPIOID-INVOLVED MAY INCLUDE PRESCRIPTION, AND ILLICIT OPIOIDS,
CATEGORIES ARE NOT MUTUALLY EXCLUSIVE

	ALL DRUG		OPIOID-INVOLVED	
	No.	Rate	No.	Rate
TOTAL Q2	9,392	50.3	3,149	16.9
AGE				
11-14	97	10.2	3	0.3
15-24	1,417	55.8	322	12.7
25-34	2,688	97.1	1,000	36.1
35-44	1,802	70.9	644	25.3
45-54	1,311	46.1	404	14.2
55-64	1,166	41.5	408	14.5
65-74	515	21.9	196	8.3
75-84	251	19.3	112	8.6
85+	135	23.5	56	9.8
ETHNICITY (RACE)				
HISPANIC	453	N/A	107	N/A
WHITE	6	N/A	0	N/A
BLACK	0	N/A	0	N/A
ASIAN	2	N/A	2	N/A
MULTIPLE RACE	2	N/A	1	N/A
UNKNOWN RACE	443	N/A	104	N/A
UNKNOWN-HISPANIC	8,939	N/A	3,042	N/A
WHITE	6,539	N/A	2,439	N/A
BLACK	1,149	N/A	258	N/A
ASIAN	86	N/A	41	N/A
MULTIPLE RACE	365	N/A	119	N/A
UNKNOWN RACE	800	N/A	185	N/A
SEX (AGE)				
MALE	5,302	58.5	1,885	20.8
11-14	25	5.2	0	N/A
15-24	746	57.3	175	13.4
25-34	1,684	120.3	669	47.8
35-44	1,091	86.7	406	32.3
45-54	710	50.9	229	16.4
55-64	639	48.1	231	17.4
65-74	253	23.2	98	9.0
75-84	105	17.9	55	9.4
85+	49	22.1	22	9.9
FEMALE	4,074	42.4	1,258	13.1
11-14	72	15.5	3	0.6
15-24	671	54.2	147	11.9
25-34	1,001	73.2	331	24.2
35-44	708	55.2	236	18.4

45-54	601	41.5	175	12.1
55-64	527	35.5	177	11.9
65-74	262	20.8	98	7.8
75-84	146	20.5	57	8.0
85+	86	24.5	34	9.7
COUNTY				
ALACHUA	362	149	41	16.9
BAKER	4	16	1	4
BAY	84	50.5	36	21.6
BRADFORD	14	56.8	4	16.2
BREVARD	441	81.9	256	47.5
BROWARD	577	33.2	139	8
CALHOUN	3	22.7	2	15.1
CHARLOTTE	10	5.8	0	N/A
CITRUS	40	29.3	28	20.5
CLAY	51	27	10	5.3
COLLIER	45	13.2	39	11.4
COLUMBIA	23	36.6	9	14.3
DE SOTO	5	15.2	1	3
DIXIE	7	46.4	4	26.5
DUVAL	748	90.2	132	15.9
ESCAMBIA	391	136.6	168	58.7
FLAGLER	46	45.2	17	16.7
FRANKLIN	0	N/A	0	N/A
GADSDEN	14	33.6	2	4.8
GILCHRIST	11	69.7	4	25.4
GLADES	0	N/A	0	N/A
GULF	4	26.5	1	6.6
HAMILTON	8	60.4	0	N/A
HARDEE	2	8.3	1	4.2
HENDRY	14	40.8	7	20.4
HERNANDO	33	19.4	13	7.6
HIGHLANDS	28	29.8	7	7.4
HILLSBOROUGH	1009	81.5	365	29.5
HOLMES	5	27.9	0	N/A
INDIAN RIVER	98	68.7	26	18.2
JACKSON	3	6.7	2	4.5
JEFFERSON	6	46.4	0	N/A
LAFAYETTE	0	N/A	0	N/A
LAKE	11	3.6	2	0.6
LEE	236	35.1	1	0.1
LEON	63	23.7	11	4.1
LEVY	13	35.4	3	8.2
LIBERTY	0	N/A	0	N/A
MADISON	7	41.7	0	N/A
MANATEE	246	70.7	109	31.3
MARION	275	85.1	24	7.4
MARTIN	76	50.8	29	19.4
MIAMI-DADE	686	27.7	48	1.9
MONROE	18	24.2	2	2.7
NASSAU	29	39	18	24.2

OKALOOSA	115	63.7	48	26.6
OKEECHOBEE	10	27.4	3	8.2
ORANGE	601	50.7	188	15.9
OSCEOLA	57	18.9	15	5
PALM BEACH	1031	77.3	726	54.5
PASCO	341	72.3	15	3.2
PINELLAS	421	46.7	417	46.3
POLK	130	21.5	24	4
PUTNAM	8	12.2	0	N/A
ST JOHNS	139	64.5	0	N/A
ST LUCIE	146	51.8	52	18.4
SANTA ROSA	8	5.2	3	1.9
SARASOTA	27	6.9	12	3.1
SEMINOLE	96	23	47	11.2
SUMTER	75	61.1	0	N/A
SUWANNEE	23	57.4	5	12.5
TAYLOR	16	78.8	5	24.6
UNION	4	28.7	0	N/A
VOLUSIA	288	58.4	0	N/A
WAKULLA	0	N/A	0	N/A
WALTON	58	96.5	18	29.9
WASHINGTON	12	52.9	3	13.2

N/A: Rates not calculated or not enough observations available.