

Motor Vehicle Crashes (MVC) in Florida

SURVEILLANCE DATA: 2014

FLORIDA VIOLENCE AND INJURY PREVENTION

MVC are a leading cause of injury death in Florida and are third after falls and poisoning.



In 2014, 2,402 Florida residents were fatally injured in MVC. There were another 14,332 hospitalizations for non-fatal injuries.

You Can Prevent MVC Injuries

TEACH TEENS

- Obey all traffic laws, safety signs & regulations.
- Set an example and be a good driver.
- Wear your seatbelt each time you drive or ride —teens have the lowest rate of seatbelt use.
- Eliminate distractions—don't use cellphones.
- Teach teens to never ride with anyone who has been drinking or doing drugs.

PROTECT CHILDREN

- Have enough booster seats for every child in your carpool.
- Children 13 and under should ride in the back seat.
- Every child in your car should enter and exit curbside.



MVC are the leading cause of teen deaths.

Teens are 3 times as likely to be involved in an MVC.

| Hospitalizations | |
|------------------|------|
| YEAR | RATE |
| 2009 | 79.4 |
| 2010 | 73.9 |
| 2011 | 73.7 |
| 2012 | 75.8 |
| 2013 | 72.5 |
| 2014 | 73.3 |



MVC Rates per 100,000

| Deaths | |
|--------|------|
| YEAR | RATE |
| 2009 | 13.3 |
| 2010 | 12.7 |
| 2011 | 12.5 |
| 2012 | 12.5 |
| 2013 | 12.1 |
| 2014 | 12.3 |



LEARN MORE:
driveithome.org
www.nsc.org/Pages/nsc-on-the-road.aspx?var=mnd

www.safekids.org
www.nhtsa.gov/Driving+Safety

www.flhsmv.gov/safety-center/driving-safety/noys.org/focus-areas/injury-prevention/

Who is Injured?

Male fatality rate was 2.9 times, and non-fatality rate was 1.8 times the female rate.



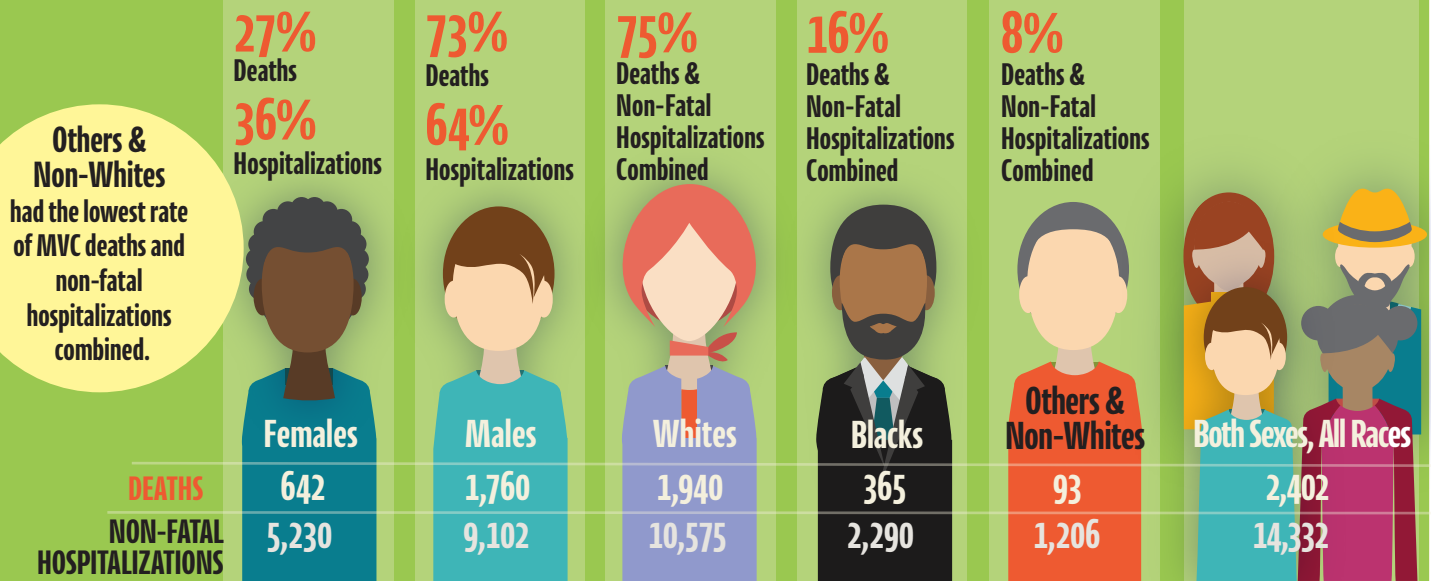
Males, 15-24, had the highest rates of non-fatal MVC hospitalizations.



Females, 85+, had the highest rates of non-fatal MVC hospitalizations.



Adults, 85+, had the highest rates of MVC fatalities.



Economic Impact on Florida

\$70,689

The median admission charge for a non-fatal MVC injury hospitalization.

\$1.7 billion

Total charges exceeded this amount.

4 days

The median length of stay.

Who Paid?

Commercial Insurance
67%