

Falls in Florida

SURVEILLANCE DATA: 2013

FLORIDA INJURY PREVENTION

www.floridahealth.gov/injury

In Florida, falls are the leading cause of injury death for residents, and are the leading cause of non-fatal injury-related hospital admissions.



In 2013, 83 Floridians died from a fall. There were 63,197 hospitalizations for fall-related injuries.

Keep your home safe.



- Remove objects from walkways.
- Install handrails.
- Install guard rails and stair gates for small children.
- Remove rugs and mats that aren't slip resistant.

Falls Can Happen Anywhere.

- Keep play safe.** Supervise children at playgrounds and at home.
- Adults and children should wear protective sports gear—helmets and pads—and bike helmets.



WEAR SENSIBLE SHOES

Shoes should fit properly and be slip-resistant. Keep laces tied.



TALK TO YOUR HEALTH CARE PROVIDER ABOUT: Your medications and regular vision check-ups.

LEARN MORE:
www.cdc.gov/homeandrecreationsafety/
www.ncoa.org/healthy-aging/falls-prevention/

Fall-Related Deaths & Injury Rates per 100,000

Hospitalizations	
YEAR	RATE
2009	311.4
2010	318.2
2011	322.4
2012	328.4
2013	327.1

Deaths	
YEAR	RATE
2009	10.6
2010	11.5
2011	12.1
2012	13.0
2013	13.5

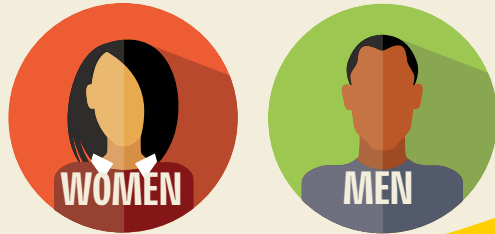


Who is Injured?

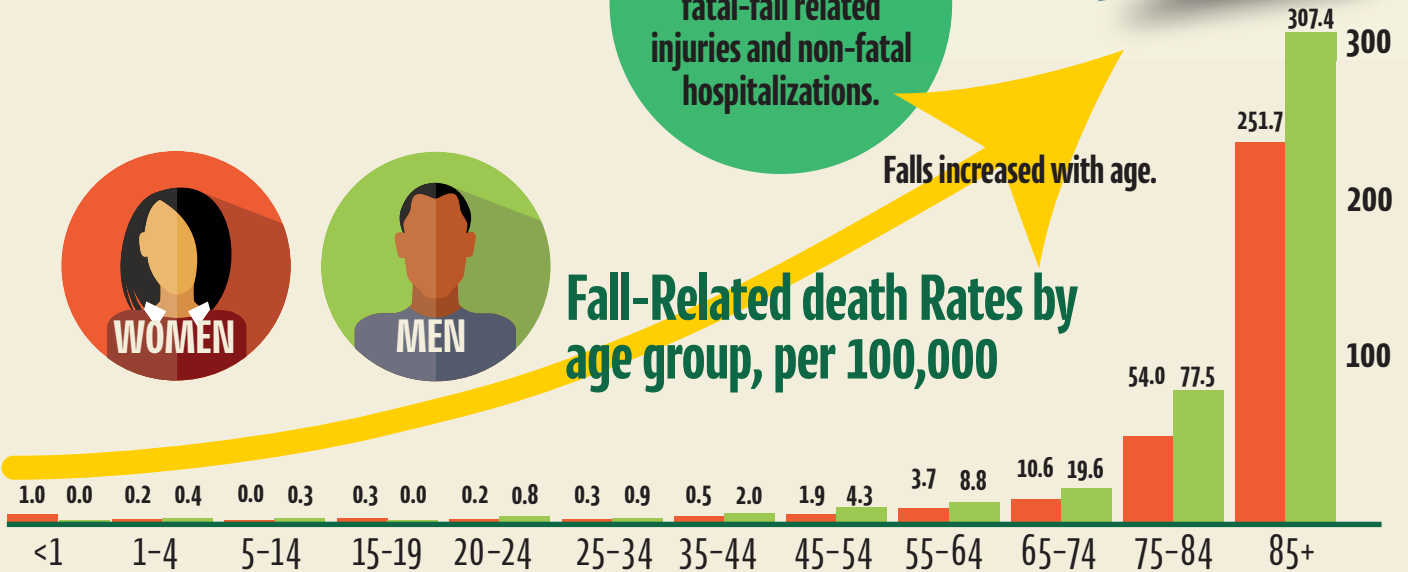
Males, ages 1+ had a higher rate of fatal fall-related injuries than females.

Residents 84+ had the highest rates of fatal-fall related injuries and non-fatal hospitalizations.

Falls increased with age.



Fall-Related death Rates by age group, per 100,000



49% Deaths
64% Hospitalizations

51% Deaths
36% Hospitalizations

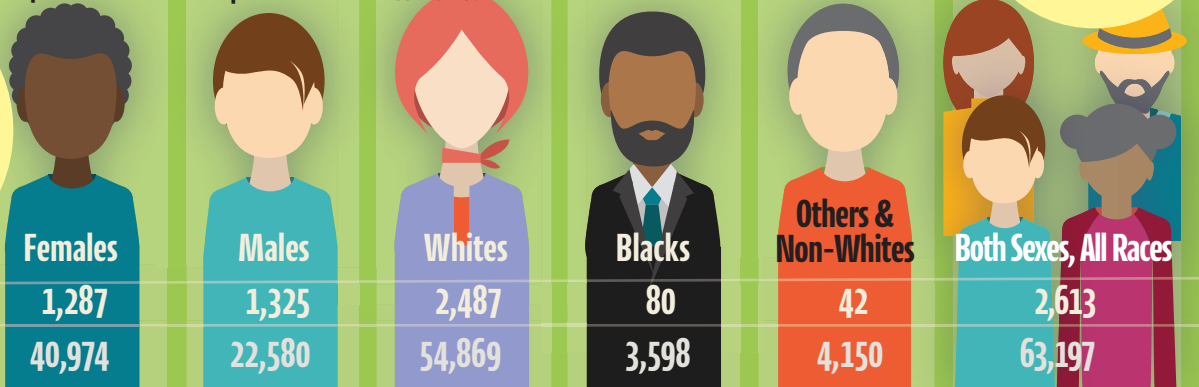
87% Fall-Related Deaths & Non-Fatal Hospitalizations Combined

6% Fall-Related Deaths & Non-Fatal Hospitalizations Combined

6% Fall-Related Deaths & Non-Fatal Hospitalizations Combined

Non-Hispanics had a higher rate of fatal fall-related injuries, than **Hispanics**.

Others & Non-Whites had the highest rate of non-fatal hospitalization.
Whites had the highest fatal fall-related injuries.



Blacks had the lowest fall-related injuries and fatal fall-related injuries.

\$49,777.00 median admission charge for non-fatal fall-related injury hospitalizations.

Total charges exceeded **\$3.9 billion**

4 days was the median length of stay

Medicare paid for **75%** of hospitalizations

Who Paid?

Florida Injury Prevention
floridahealth.gov/injury
850-245-4440
Injury@flhealth.gov

