

# Falls in Florida

SURVEILLANCE DATA: 2014

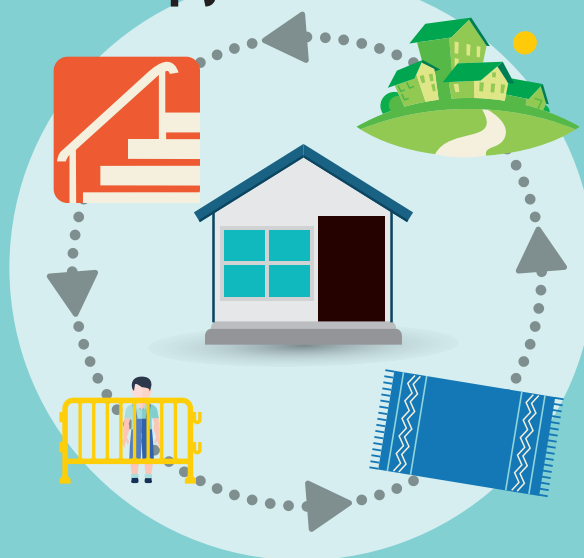
## FLORIDA VIOLENCE AND INJURY PREVENTION

In Florida, falls are the leading cause of injury death for residents, and are the leading cause of non-fatal injury-related hospital admissions.



In 2014, 2,764 Floridians died from an unintentional fall. There were 67,860 hospitalizations for fall-related injuries.

### Keep your home safe.



Remove objects from walkways.  
Install handrails.  
Install guard rails and stair gates for small children.  
Remove rugs and mats that aren't slip resistant.

**Keep play safe.**  
Supervise children at playgrounds and at home.  
Adults and children should wear protective sports gear—helmets and pads—and bike helmets.

### Falls Can Happen Anywhere.

### WEAR SENSIBLE SHOES

Shoes should fit properly and be slip-resistant. Keep laces tied.



**TALK TO YOUR HEALTH CARE PROVIDER ABOUT:** Your medications and regular vision check-ups.

LEARN MORE:  
[www.cdc.gov/homeandrecreationsafety/](http://www.cdc.gov/homeandrecreationsafety/)  
[www.ncoa.org/healthy-aging/falls-prevention/](http://www.ncoa.org/healthy-aging/falls-prevention/)

### Fall-Related Deaths & Injury Rates per 100,000

| Hospitalizations |       |
|------------------|-------|
| YEAR             | RATE  |
| 2009             | 311.4 |
| 2010             | 318.2 |
| 2011             | 322.4 |
| 2012             | 328.4 |
| 2013             | 327.1 |
| 2014             | 347.1 |

| Deaths |      |
|--------|------|
| YEAR   | RATE |
| 2009   | 10.6 |
| 2010   | 11.5 |
| 2011   | 12.1 |
| 2012   | 13.0 |
| 2013   | 13.5 |
| 2014   | 14.2 |



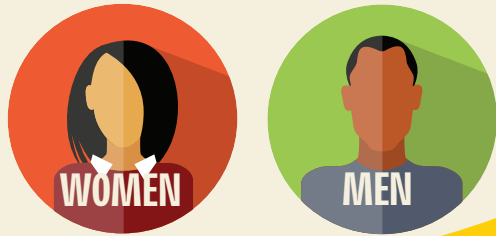
# Who is Injured?

**Males** had a higher rate of fatal Fall-related injuries than females.

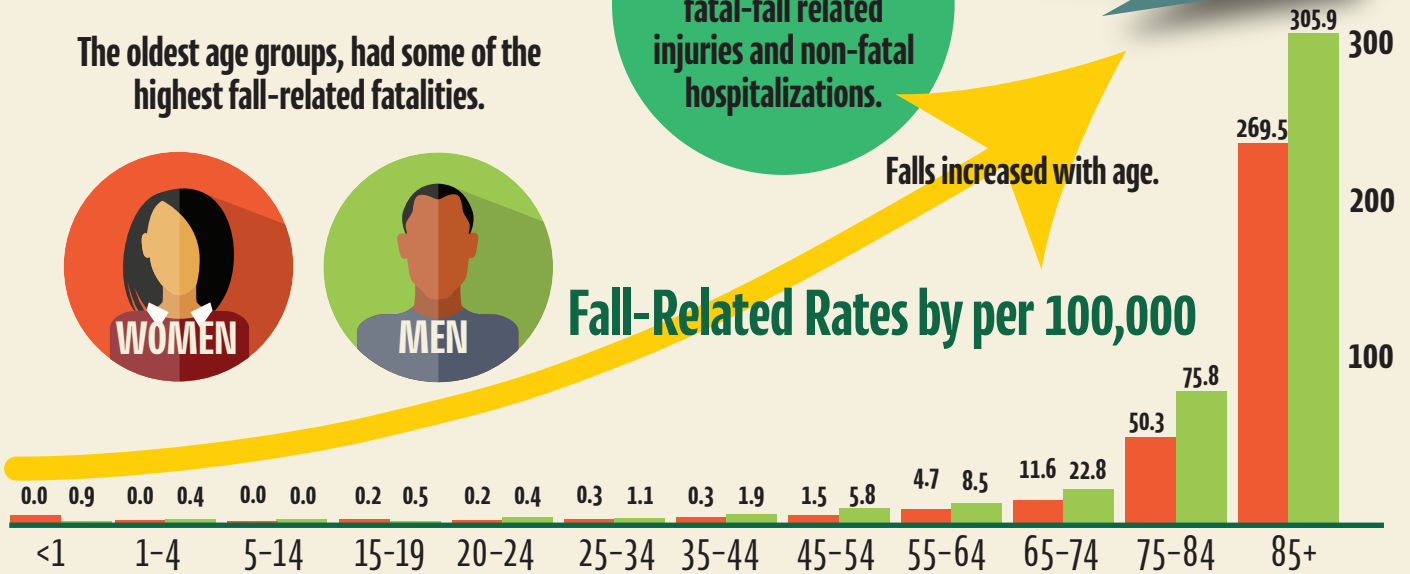
The oldest age groups, had some of the highest fall-related fatalities.

Residents 85+ had the highest rates of fatal-fall related injuries and non-fatal hospitalizations.

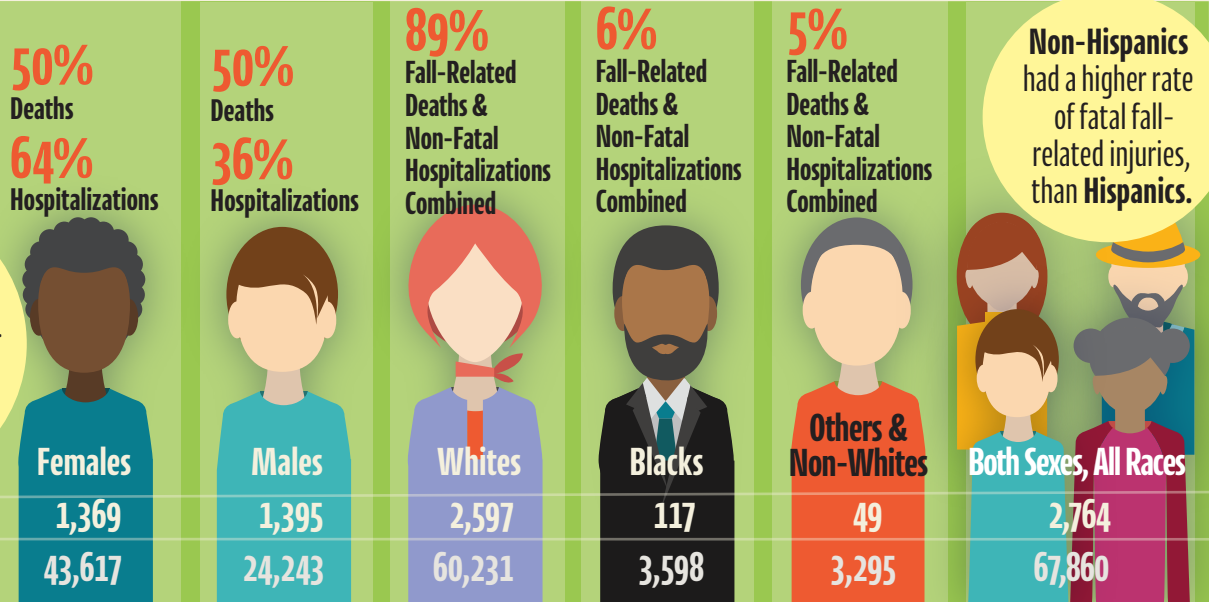
Falls increased with age.



## Fall-Related Rates by per 100,000



Whites had the highest rate of non-fatal hospitalization. Whites had the highest fatal fall-related injuries.



Non-Hispanics had a higher rate of fatal fall-related injuries, than Hispanics.

# Who Paid?

**\$52,191** median admission charge for non-fatal fall-related injury hospitalizations.

Total charges exceeded **\$4.4 billion**

**4 days** was the median length of stay

Medicare paid for **76%** of hospitalizations